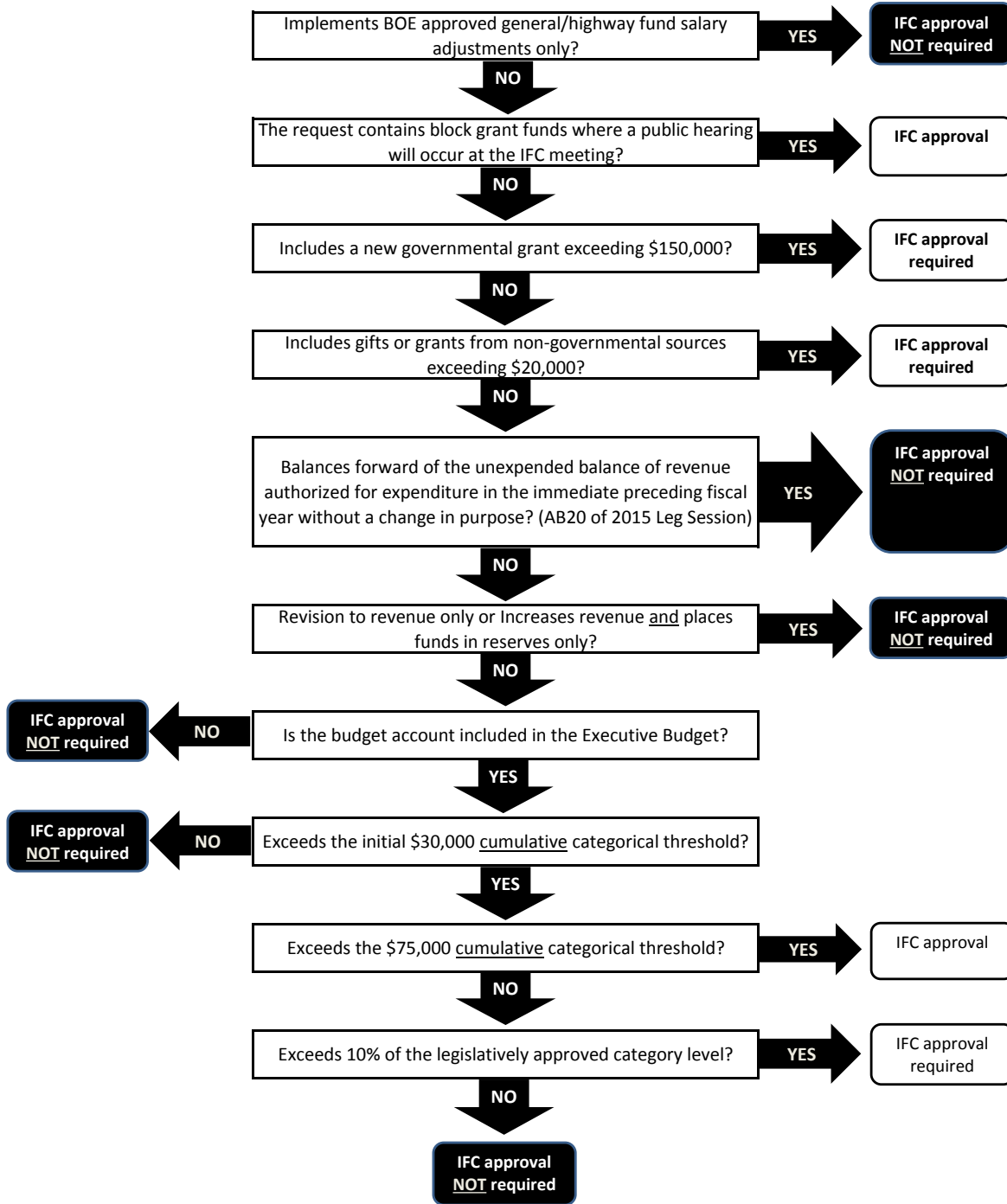


DETERMINING IF IFC APPROVAL IS REQUIRED

Work Program Revisions

Decision Tree to Determine IFC Approval Requirements



Revised 8/5/16

For additional guidelines on IFC thresholds, please consult NRS 353.220, NRS 353.335, or discuss requirements with your assigned Budget Division Analyst. Additional information can also be located in Assembly Bill 20 from the 2015 Legislative Session.