

The SILVER SAGE

AN OVERVIEW OF NEVADA'S ECONOMY BY THE SAGES AT THE DEPARTMENT OF ADMINISTRATION



		US Rate	Nevada Rate	Rank 1 = best
Foreclosure Filings Rate	Feb '15	0.08%	0.18%	49
Home Price Index (FHFA)	2014q4 v 2013q4	4.9%	9.1%	1
	2014q4 v 2009q4	11.5%	30.7%	2
Wage & Salary Disbursements	2014q4 v 2013q4	5.1%	4.4%	32
Personal Income	2014q4 v 2013q4	4.5%	4.6%	20
Employment*	Feb '15 v Feb '14	2.4%	3.4%	9
Unemployment**	Feb '15	5.5%	7.1%	50

*Not seasonally adjusted.
**Seasonally adjusted.

It is remarkable how often the first interpretations of new evidence have confirmed the preconceptions of its discoverer.
— John Reader

State General Fund Revenues Historical Collections and Year-to-Date FY 2015 Collections compared to Year-to-Date FY 2014

General Fund Revenue Sources	FY 2012 Actual			FY 2013 Actual			FY 2014 Actual			FY 2015 Actual Year-to-Date		
	Total	Yr/Yr Change	%	Total	Yr/Yr Change	%	Total	Yr/Yr Change	%	Total	Yr/Yr Change	%
	millions	millions	%	millions	millions	%	millions	millions	%	millions	millions	%
Sales Tax	\$842.9	\$47.4	6.0	\$888.7	\$45.7	5.4	\$931.3	\$42.7	4.8	\$573.1	\$41.0	7.7
Gaming Percentage Fees Collections [1]	653.7	1.5	0.2	678.9	25.2	3.9	682.3	3.5	0.5	499.0	4.9	1.0
Modified Business Tax - Financial & NonFinancial [2, 3]	369.7	(12.2)	(3.2)	386.6	16.9	4.6	384.9	(1.7)	(0.4)	199.0	5.9	3.1
Insurance Premium Tax [2]	236.8	2.0	0.8	248.5	11.7	5.0	263.5	15.0	6.0	148.5	13.5	10.0
Live Entertainment Tax - Gaming	125.3	6.8	5.7	125.7	0.4	0.3	139.2	13.4	10.7	85.2	(6.1)	(6.7)
Cigarette Tax	83.0	(3.0)	(3.5)	83.0	0.0	0.1	79.6	(3.4)	(4.1)	46.9	0.5	1.1
Commercial Recordings	66.7	(6.9)	(9.3)	65.1	(1.6)	(2.4)	66.7	1.6	2.5	43.8	(0.1)	(0.2)
Real Property Transfer Tax [2]	48.4	(3.2)	(6.2)	55.0	6.6	13.7	60.0	5.1	9.2	31.9	0.8	2.5
Liquor Tax	40.6	1.2	3.0	39.9	(0.8)	(1.9)	41.8	2.0	4.9	25.2	0.7	2.7
Governmental Services Tax-Depreciation	62.4	0.8	1.3	63.5	1.1	1.8	62.3	(1.2)	(1.9)	40.7	(0.8)	(1.9)
Governmental Services Tax-Commissions & Penalties [4]	24.7	24.7	n/a	25.1	0.4	1.8	0.0	(25.1)	(100.0)	15.3	15.3	n/a
Business License Fee [5]	64.8	10.3	19.0	69.0	4.2	6.5	72.2	3.2	4.6	47.6	0.3	0.7
State Share Various Local SUT	24.3	1.4	6.0	25.7	1.4	5.8	27.2	1.4	5.6	16.7	1.1	7.2
State Share LSST [6]	8.3	0.6	7.5	8.8	0.5	5.8	9.2	0.4	4.6	5.6	0.3	6.5
Live Entertainment Tax - NonGaming	11.6	(0.5)	(3.8)	11.7	0.1	0.5	15.0	3.3	28.0	8.5	0.9	11.2
Quarterly Slots [2, 7]	21.1	0.4	2.0	20.7	(0.4)	(2.0)	19.7	(1.0)	(4.9)	9.8	(0.1)	(1.3)
Other General Fund Revenues [8]	160.5	(70.3)	(30.5)	173.3	12.8	8.0	168.4	(4.9)	(2.8)	107.5	0.5	0.4
Net Proceeds of Minerals [9]	120.4	8.9	8.0	111.3	(9.1)	(7.6)	26.2	(85.1)	(76.4)	n/a	n/a	n/a
Unclaimed Property [10]	97.4	13.6	16.2	32.9	(64.5)	(66.2)	17.5	(15.5)	(46.9)	n/a	n/a	n/a
Year-End Transfers	19.1	(4.5)	(19.1)	19.2	0.1	0.6	0.0	(19.2)	(100.0)	n/a	n/a	n/a
Totals	\$3,081.8	(\$93.7)	(2.9)	\$3,132.6	\$50.8	1.6	\$3,066.9	(\$65.7)	(2.1)	\$1,904.4	\$78.5	4.3
Lodging Tax [11]	\$126.4	\$13.9	12.3	\$128.7	\$2.3	1.8	\$141.1	\$12.4	9.6	\$83.8	\$8.1	10.7

[1] Gaming Percentage Fees are reported in the month following the month of actual gaming activity.

[2] Amounts are reported quarterly.

[3] The rate of the Modified Business Tax for non-financial institutions was changed in FY 2010, FY 2012 and again in FY 2014, which accounts for most of the year-over-year change in revenues in those years. In FY 2010 and FY 2011, the rate was 0.5% on taxable wages up to \$62,500 per quarter and 1.17% on taxable wages above \$62,500. In FY 2012 and FY 2013, taxable wages up to \$62,500 per quarter were not taxed, while those above \$62,500 were taxed at 1.17%. In FY 2014 and FY 2015, taxable wages up to \$85,000 per quarter were not taxed, while those above \$85,000 were taxed at 1.17%. In FY 2016, the rate is scheduled to revert to the FY 2009 rate of 0.63% on all taxable wages with no exempted amounts.

[4] Governmental Services Tax proceeds from commissions and penalties are transferred to the General Fund in FY 2012, FY 2013 and FY 2015; they are scheduled to be retained by the Department of Motor Vehicles in FY 2014 and in FY 2016 and beyond.

[5] Business License Fees for initial application and annual renewal were increased to \$200 from \$100 beginning in FY 2010. The Business License Fee is scheduled to revert to \$100 in FY 2016.

[6] The rate of the Local School Support Tax was increased in FY 2010 to 2.60% from 2.25% previously. The rate is scheduled to revert to 2.25% in FY 2016.

[7] In FY 2012 and FY 2013, the General Fund retained half of the quarterly fee per slot machine that had been previously dedicated to the Account to Support Programs for the Prevention and Treatment of Problem Gaming.

[8] FY 2010 and FY 2011 included several large diversions to the General Fund (most notably, a portion of property tax revenues collected by Clark and Washoe counties). These diversions were not continued in the 2011-2013 biennium. Their exclusion accounts for most of the decline between FY 2011 and FY 2012.

[9] Prior to FY 2010, the Net Proceeds of Minerals Tax was collected on net proceeds from the calendar year ending in December of the given fiscal year. From FY 2010 through FY 2013, these taxes were collected based on an estimate of the net proceeds for the calendar year beginning in January of the given fiscal year and ending six months after the close of the given fiscal year, with a "true-up" to account for actual net proceeds due in the following fiscal year. In addition, in FY 2012 and FY 2013, the deduction for health and industrial insurance expenses was eliminated. Both the prepayment and deduction provisions are scheduled to revert to FY 2009 methodology in FY 2016 and beyond.

[10] The period after which property is presumed to have been abandoned was reduced to 2 years from 3 years under certain conditions, producing a large increase in unclaimed property revenue in FY 2011 and FY 2012 compared with previous years.

[11] Lodging tax revenues were deposited into the General Fund in FY 2010 and FY 2011; they are deposited into the Distributive School Account beginning in FY 2012 and are scheduled to be deposited into the Supplemental School Account in FY 2016 and thereafter.

State General Fund Revenues Budgeted Amounts Based on December 2014 Economic Forum Forecast

General Fund Revenue Sources	FY 2015 Budget			FY 2015 Collections vs Budget			
	Total	Yr/Yr Change	%	Through	Year-to-Date		
	millions	millions			Actual	Over (Under)	
					millions	millions	%
Sales Tax	\$995.8	\$64.5	6.9	January	\$573.1	(\$2.6)	(0.5)
Gaming Percentage Fees Collections [1]	687.2	4.9	0.7	March	499.0	1.5	0.3
Modified Business Tax - Financial & Non-Financial [2, 3]	403.7	18.9	4.9	December	199.0	(5.0)	(2.5)
Insurance Premium Tax [2]	291.2	27.7	10.5	December	148.5	3.8	2.6
Live Entertainment Tax - Gaming	135.9	(3.3)	(2.3)	February	85.2	(2.9)	(3.3)
Cigarette Tax	77.8	(1.8)	(2.2)	January	46.9	1.6	3.5
Commercial Recordings	67.9	1.2	1.8	February	43.8	0.3	0.6
Real Property Transfer Tax [2]	65.4	5.4	8.9	December	31.9	(2.6)	(7.5)
Liquor Tax	42.6	0.8	1.9	January	25.2	0.7	2.7
Governmental Services Tax-Depreciation	62.9	0.6	1.0	February	40.7	(1.2)	(2.9)
Governmental Services Tax-Commissions & Penalties [4]	24.9	24.9	0.0	February	15.3	(1.3)	(7.7)
Business License Fee [5]	74.4	2.2	3.1	February	47.6	(2.0)	(4.1)
State Share Various Local SUT	27.1	(0.1)	(0.4)	January	16.7	1.1	6.8
State Share LSST [6]	9.7	0.5	5.6	January	5.6	0.0	0.0
Live Entertainment Tax - NonGaming	15.7	0.7	4.6	January	8.5	(0.2)	(2.5)
Quarterly Slots [2, 7]	19.5	(0.2)	(0.9)	January	9.8	0.0	0.5
Other General Fund Revenues	164.5	(3.9)	(2.3)	February	107.5	2.9	2.8
Net Proceeds of Minerals [8]	28.9	2.7	10.2	n/a	n/a	n/a	n/a
Unclaimed Property [9]	10.1	(7.4)	(42.3)	n/a	n/a	n/a	n/a
Totals	\$3,205.3	\$138.3	4.5		\$1,904.4	(\$6.1)	(0.3)
Lodging Tax [10]	\$148.1	\$7.0	5.0	January	\$83.8	\$1.2	1.4

[1] Gaming Percentage Fees are reported in the month following the month of actual gaming activity.

[2] Amounts are reported quarterly.

[3] The rate of the Modified Business Tax for non-financial institutions was changed in FY 2010, FY 2012 and again in FY 2014, which accounts for most of the year-over-year change in revenues in those years. In FY 2010 and FY 2011, the rate was 0.5% on taxable wages up to \$62,500 per quarter and 1.17% on taxable wages above \$62,500. In FY 2012 and FY 2013, taxable wages up to \$62,500 per quarter were not taxed, while those above \$62,500 were taxed at 1.17%. In FY 2014 and FY 2015, taxable wages up to \$85,000 per quarter were not taxed, while those above \$85,000 were taxed at 1.17%. In FY 2016, the rate is scheduled to revert to the FY 2009 rate of 0.63% on all taxable wages with no exempted amounts.

[4] Governmental Services Tax proceeds from commissions and penalties are transferred to the General Fund in FY 2012, FY 2103 and FY 2015; they are scheduled to be retained by the Department of Motor Vehicles in FY 2014 and in FY 2016 and beyond.

[5] Business License Fees for initial application and annual renewal were increased to \$200 from \$100 beginning in FY 2010. The Business License Fee is scheduled revert to \$100 in FY 2016.

[6] The rate of the Local School Support Tax was increased in FY 2010 to 2.60% from 2.25% previously. The rate is scheduled to revert to 2.25% in FY 2016.

[7] In FY 2012 and FY 2013, the General Fund retained half of the quarterly fee per slot machine that had been previously dedicated to the Account to Support Programs for the Prevention and Treatment of Problem Gaming.

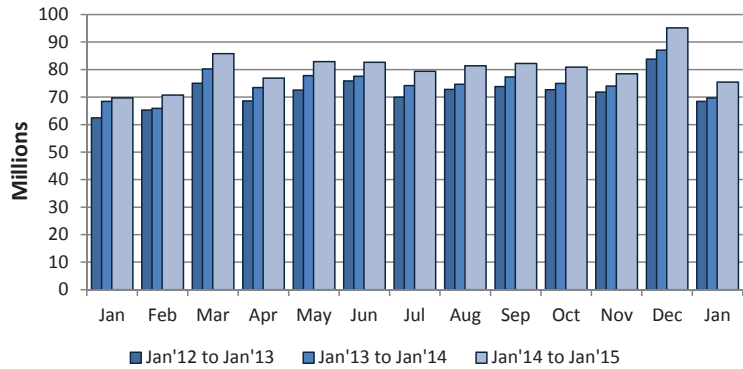
[8] Prior to FY 2010, the Net Proceeds of Minerals Tax was collected on net proceeds from the calendar year ending in December of the given fiscal year. From FY 2010 through FY 2013, these taxes were collected based on an estimate of the net proceeds for the calendar year beginning in January of the given fiscal year and ending six months after the close of the given fiscal year, with a "true-up" to account for actual net proceeds due in the following fiscal year. In addition, in FY 2012 and FY 2013, the deduction for health and industrial insurance expenses was eliminated. Both the prepayment and deduction provisions are scheduled to revert to FY 2009 methodology in FY 2016 and beyond.

[9] The period after which property is presumed to have been abandoned was reduced to 2 years from 3 years under certain conditions, producing a large increase unclaimed property revenue in FY 2011 and FY 2012 compared with previous years.

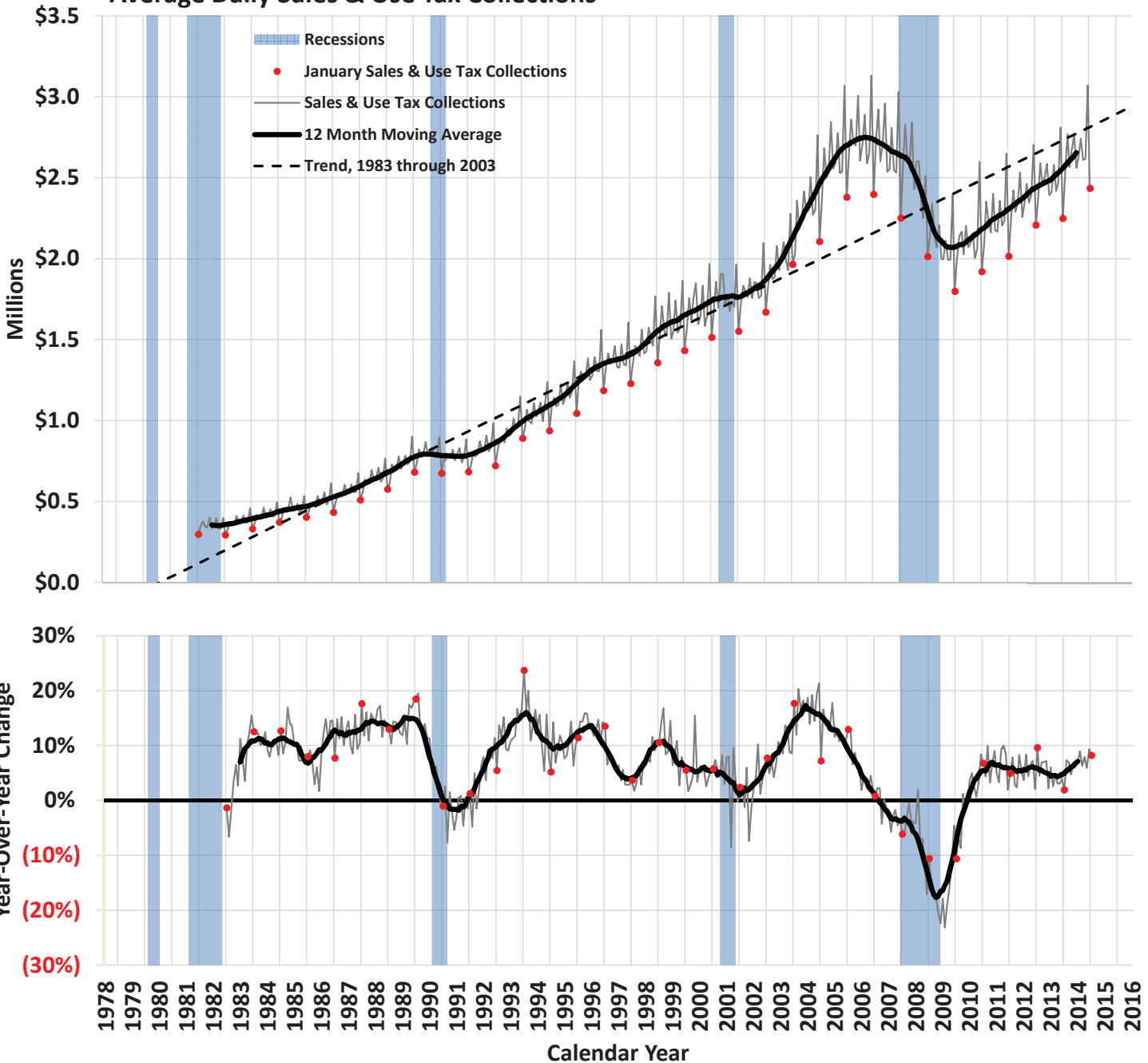
[10] Lodging tax revenues were deposited into the General Fund in FY 2010 and FY 2011; they are deposited into the Distributive School Account beginning in FY 2012 and are scheduled to be deposited into the Supplemental School Account in FY 2016 and thereafter.

2% General Fund Sales & Use Tax Collections

	Total	Year/Year Change	
	(millions)	(millions)	%
January 2014	\$69.8	\$1.3	1.9
February 2014	70.8	4.8	7.3
March 2014	85.8	5.5	6.9
April 2014	77.0	3.5	4.7
May 2014	82.9	5.1	6.6
June 2014	82.7	5.1	6.6
July 2014	79.4	5.2	7.0
August 2014	81.4	6.7	9.0
September 2014	82.2	4.9	6.3
October 2014	80.9	5.9	7.9
November 2014	78.5	4.4	6.0
December 2014	95.2	8.1	9.3
January 2015	75.5	5.7	8.2



Average Daily Sales & Use Tax Collections



*Reported values exclude amounts collected under state tax amnesty programs.

Statewide Taxable Sales & Use by Industry

	Food Services & Drinking Places (722)				Miscellaneous Retail & Non-Retail Stores (442, 443, 447, 451, 453, 454)				Motor Vehicle & Parts Dealers (441)				General Merchandise Stores (452)			
	Year/Year Change		Share of Total		Year/Year Change		Share of Total		Year/Year Change		Share of Total		Year/Year Change		Share of Total	
	(millions)	%	%	Rank	(millions)	%	%	Rank	(millions)	%	%	Rank	(millions)	%	%	Rank
January 2014	\$57.4	7.3	23.9	1	\$15.0	4.1	10.9	3	\$25.4	6.8	11.3	2	(\$26.1)	(8.2)	8.3	5
February 2014	76.2	10.2	23.5	1	22.4	6.5	10.4	3	24.8	6.2	12.1	2	6.2	1.9	9.4	4
March 2014	83.3	9.0	22.8	1	153.1	41.6	11.8	2	30.5	6.6	11.2	3	77.5	22.4	9.6	4
April 2014	(41.6)	(4.7)	21.8	1	50.6	13.9	10.7	3	9.8	2.2	11.5	2	14.5	4.4	8.9	4
May 2014	60.5	6.5	23.2	1	47.2	12.9	9.7	4	45.0	9.7	12.0	2	136.1	39.9	11.2	3
June 2014	40.3	4.6	22.2	1	151.3	38.4	13.1	2	18.3	4.2	11.0	3	(118.0)	(32.3)	6.0	6
July 2014	55.3	6.6	22.1	1	102.6	27.8	11.8	3	4.3	0.9	12.0	2	10.4	3.2	8.4	5
August 2014	77.4	8.9	23.2	1	49.5	13.8	10.0	3	53.7	11.3	12.9	2	7.2	2.1	8.8	4
September 2014	(124.0)	(12.1)	21.2	1	127.7	32.9	12.2	2	49.3	12.0	10.9	3	(2.2)	(0.6)	8.4	5
October 2014	64.2	7.5	22.6	1	66.6	18.0	10.7	3	37.5	9.0	11.1	2	11.6	3.4	8.6	5
November 2014	35.2	4.4	21.2	1	60.9	14.7	12.0	2	28.6	7.0	10.9	3	15.2	3.7	10.7	4
December 2014	54.5	7.0	17.1	1	131.7	23.5	14.2	2	38.6	8.9	9.7	4	4.4	0.8	11.4	3
January 2015	78.6	9.3	24.1	1	31.1	8.1	10.9	3	57.4	14.4	12.0	2	17.8	6.1	8.1	5

	Wholesale Trade (423-425)				Clothing & Clothing Accessories Stores (448)				Information, Financial, Insurance, Real Estate, Renting & Leasing (511-533)				Manufacturing (311-339)			
	Year/Year Change		Share of Total		Year/Year Change		Share of Total		Year/Year Change		Share of Total		Year/Year Change		Share of Total	
	(millions)	%	%	Rank	(millions)	%	%	Rank	(millions)	%	%	Rank	(millions)	%	%	Rank
January 2014	\$3.3	1.1	8.5	4	(\$18.7)	(6.6)	7.5	6	\$20.1	11.5	5.5	7	(\$10.1)	(5.5)	4.9	8
February 2014	20.3	7.2	8.6	5	0.9	0.3	8.3	6	39.8	23.6	5.9	7	13.9	8.9	4.8	8
March 2014	32.3	10.2	7.8	5	9.4	3.0	7.1	6	29.0	14.6	5.1	8	(23.8)	(9.9)	4.9	8
April 2014	8.0	2.4	8.9	5	34.4	12.3	8.1	6	81.9	58.6	5.7	7	(17.9)	(8.2)	5.1	8
May 2014	41.2	13.0	8.4	5	6.9	2.2	7.5	6	21.0	10.7	5.1	7	(28.0)	(12.0)	4.8	8
June 2014	46.9	14.1	9.2	4	5.2	1.7	7.7	5	(0.6)	(0.3)	5.2	9	4.7	2.0	5.7	7
July 2014	20.4	5.8	9.2	4	13.1	4.6	7.5	6	22.4	11.7	5.3	7	(50.5)	(20.0)	5.0	8
August 2014	22.6	6.7	8.8	5	24.9	7.9	8.3	6	12.2	6.1	5.2	7	(23.5)	(11.2)	4.6	8
September 2014	60.7	18.7	9.1	4	(2.5)	(0.7)	7.9	6	29.6	14.4	5.6	7	(31.8)	(12.6)	5.2	8
October 2014	8.7	2.5	8.8	4	(1.3)	(0.4)	7.5	6	15.1	7.0	5.6	7	(61.1)	(22.2)	5.2	8
November 2014	26.9	9.1	8.1	6	10.6	3.1	8.8	5	(0.0)	(0.0)	4.9	7	1.1	0.6	4.8	8
December 2014	29.2	8.1	8.0	6	10.6	2.4	9.3	5	43.5	19.8	5.4	9	43.6	18.7	5.7	7
January 2015	15.8	5.3	8.3	4	10.6	4.0	7.2	6	37.1	19.0	6.1	7	13.3	7.6	4.9	8

	Building Material & Garden Equipment & Supplies (444)				Food & Beverage Stores (445)				Construction (236-238)				Health & Personal Care Stores (446)			
	Year/Year Change		Share of Total		Year/Year Change		Share of Total		Year/Year Change		Share of Total		Year/Year Change		Share of Total	
	(millions)	%	%	Rank	(millions)	%	%	Rank	(millions)	%	%	Rank	(millions)	%	%	Rank
January 2014	(\$1.3)	(1.0)	3.7	9	(\$5.4)	(4.3)	3.4	10	(\$16.7)	(16.7)	2.4	11	\$4.1	6.3	1.9	12
February 2014	10.9	9.1	3.7	9	1.5	1.3	3.5	10	(81.4)	(77.4)	0.7	14	5.3	8.4	2.0	11
March 2014	(3.2)	(1.9)	3.7	9	(0.9)	(0.7)	3.0	10	(24.8)	(22.6)	1.9	12	12.1	17.3	1.9	13
April 2014	1.6	0.9	4.6	9	0.4	0.3	3.3	10	(72.7)	(47.7)	2.0	11	7.5	11.1	1.9	12
May 2014	6.0	3.5	4.1	9	7.7	5.7	3.4	10	(24.8)	(22.7)	2.0	11	2.5	3.5	1.8	12
June 2014	7.9	4.7	4.2	9	1.2	0.9	3.3	10	(28.9)	(23.3)	2.3	11	5.1	6.8	1.9	12
July 2014	10.8	6.7	4.3	9	5.4	4.1	3.4	10	0.3	0.4	2.5	11	4.6	7.0	1.7	12
August 2014	9.2	6.4	3.7	9	25.9	22.8	3.4	10	14.1	13.7	2.9	11	6.5	9.8	1.8	12
September 2014	11.1	7.4	3.8	9	(8.4)	(5.8)	3.2	10	0.7	0.6	2.6	11	4.1	5.6	1.8	12
October 2014	13.5	8.7	4.1	9	4.4	3.5	3.2	10	(10.9)	(10.5)	2.3	11	4.9	7.2	1.8	12
November 2014	12.6	9.0	3.8	9	4.3	3.3	3.4	10	(4.5)	(5.5)	2.0	11	(1.9)	(2.8)	1.7	12
December 2014	16.9	12.4	3.1	10	6.1	3.3	3.9	9	17.3	16.9	2.5	11	5.7	6.2	2.0	12
January 2015	12.8	9.7	3.8	10	4.8	3.9	3.3	11	1.3	1.6	2.2	12	3.5	5.1	1.9	13

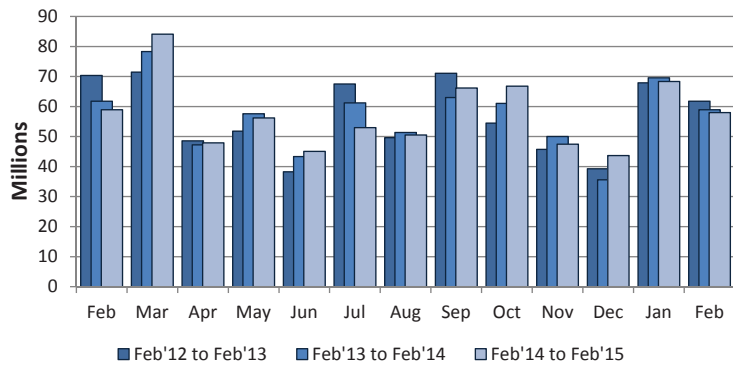
	Natural Resources & Utilities (111-221)				Arts, Entertainment, Recreation & Accommodation (710-721)				Transportation & Warehousing (481-493)				Other Services**, Public Administration & Miscellaneous (541-624, 811-999)			
	Year/Year Change		Share of Total		Year/Year Change		Share of Total		Year/Year Change		Share of Total		Year/Year Change		Share of Total	
	(millions)	%	%	Rank	(millions)	%	%	Rank	(millions)	%	%	Rank	(millions)	%	%	Rank
January 2014	(\$1.8)	(3.4)	1.5	13	\$14.3	62.0	1.1	14	\$2.4	19.1	0.4	15	\$11.0	7.4	4.5	9
February 2014	(6.9)	(14.8)	1.1	12	1.6	6.3	0.8	13	5.4	45.5	0.5	15	13.6	9.0	4.7	9
March 2014	25.4	36.9	2.1	11	(6.5)	(15.3)	0.8	14	(0.9)	(4.3)	0.5	15	101.6	66.3	5.8	7
April 2014	(7.0)	(13.1)	1.2	13	5.0	18.8	0.8	14	2.5	12.3	0.6	15	38.6	25.4	4.9	9
May 2014	(30.5)	(44.4)	0.9	14	(9.4)	(19.5)	0.9	13	(8.7)	(39.0)	0.3	15	43.3	28.2	4.6	9
June 2014	(2.6)	(4.9)	1.2	13	14.5	46.8	1.1	14	13.1	72.2	0.8	15	28.9	15.3	5.2	8
July 2014	2.7	5.6	1.3	13	12.9	58.9	0.9	14	0.9	6.0	0.4	15	23.0	15.7	4.2	10
August 2014	(21.8)	(36.5)	0.9	13	6.1	21.3	0.8	14	8.3	58.0	0.6	15	12.3	7.8	4.2	9
September 2014	(9.4)	(14.3)	1.3	13	8.9	27.9	1.0	14	(1.5)	(8.0)	0.4	15	48.6	27.7	5.3	8
October 2014	21.0	44.8	1.7	13	13.2	37.6	1.2	14	10.2	61.2	0.7	15	(8.5)	(4.1)	4.9	9
November 2014	(18.8)	(25.6)	1.4	13	6.0	18.2	1.0	14	8.3	51.6	0.6	15	69.8	62.8	4.6	9
December 2014	1.5	3.5	0.9	13	4.5	12.6	0.8	14	4.5	23.3	0.5	15	38.4	17.0	5.4	8
January 2015	(16.9)	(32.3)	0.9	15	3.1	8.2	1.1	14	3.6	24.2	0.5	16	18.7	11.7	4.7	9

* Statistically significant outliers in most recent month's data

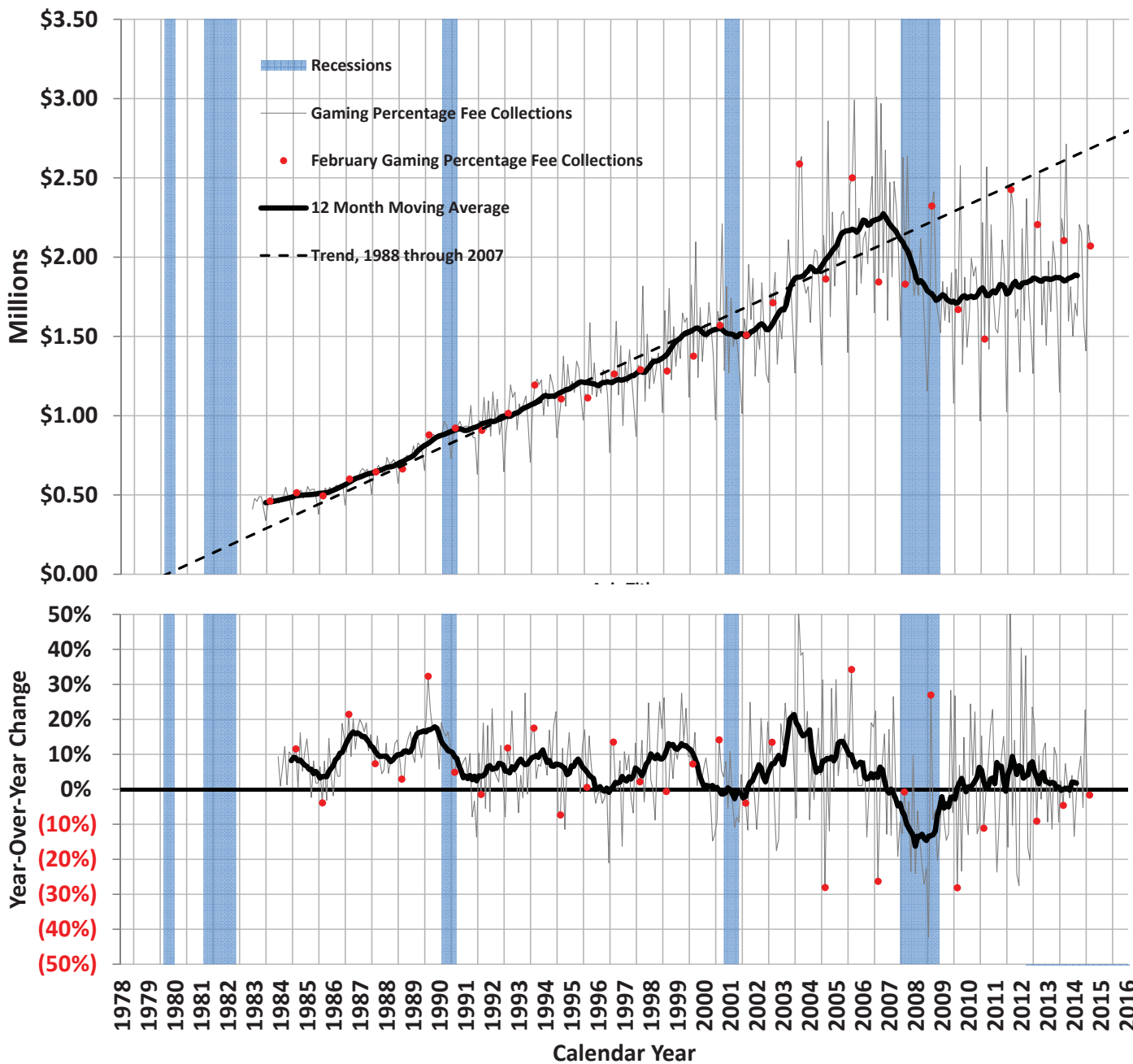
** Other Services includes Professional, Management, Administration, Education and Health Services.

Gaming Percentage Fees Collections

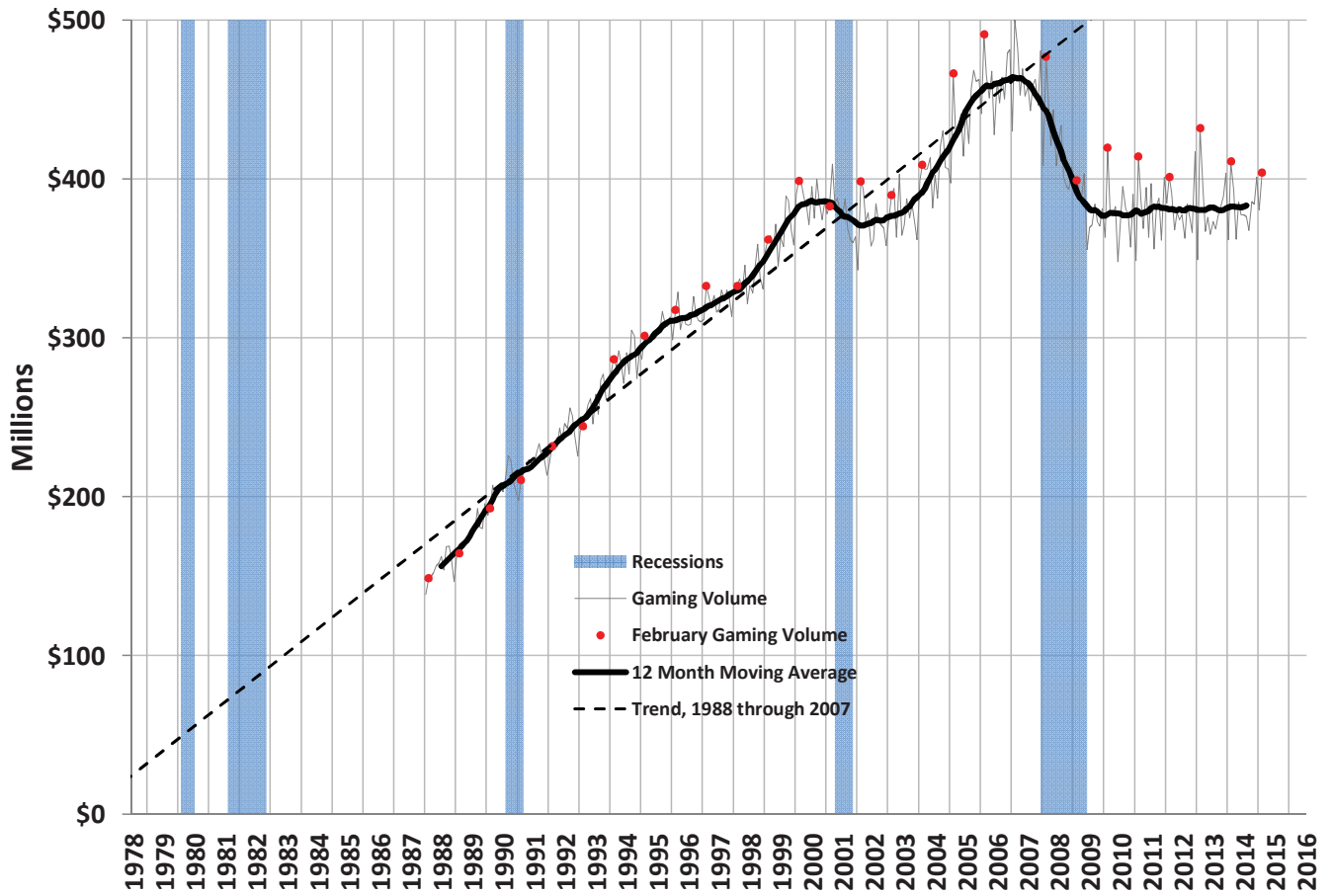
	Total	Year/Year Change	
	(millions)	(millions)	%
February 2014	\$58.9	(\$2.8)	(4.6)
March 2014	84.1	5.8	7.4
April 2014	47.9	0.7	1.4
May 2014	56.2	(1.4)	(2.4)
June 2014	45.1	1.7	4.0
July 2014	53.0	(8.2)	(13.5)
August 2014	50.5	(0.9)	(1.7)
September 2014	66.2	3.2	5.0
October 2014	66.8	5.8	9.5
November 2014	47.4	(2.6)	(5.1)
December 2014	43.7	8.1	22.7
January 2015	68.4	(1.2)	(1.7)
February 2015	58.0	(1.0)	(1.6)



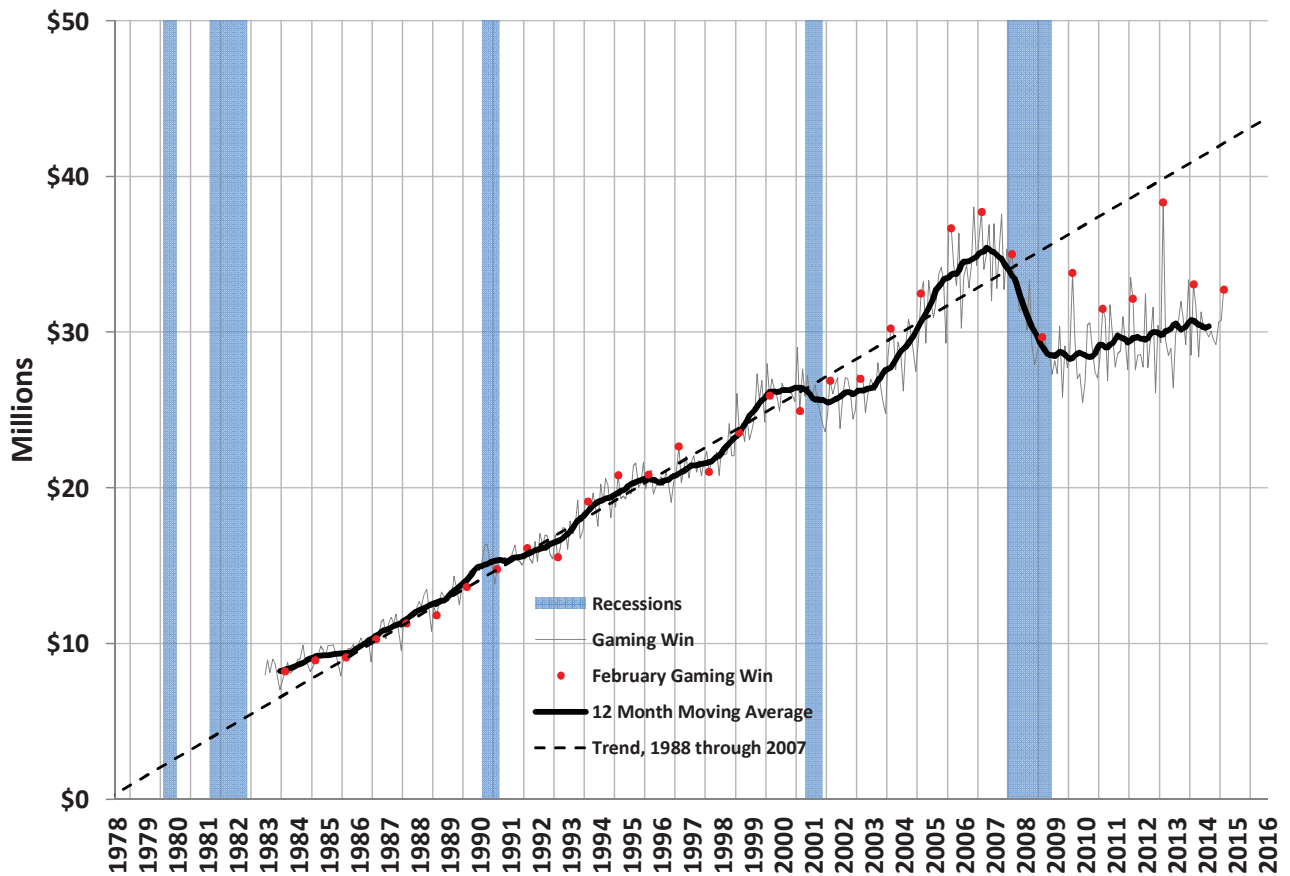
Average Daily Gaming Percentage Fee Collections



Average Daily Gaming Volume

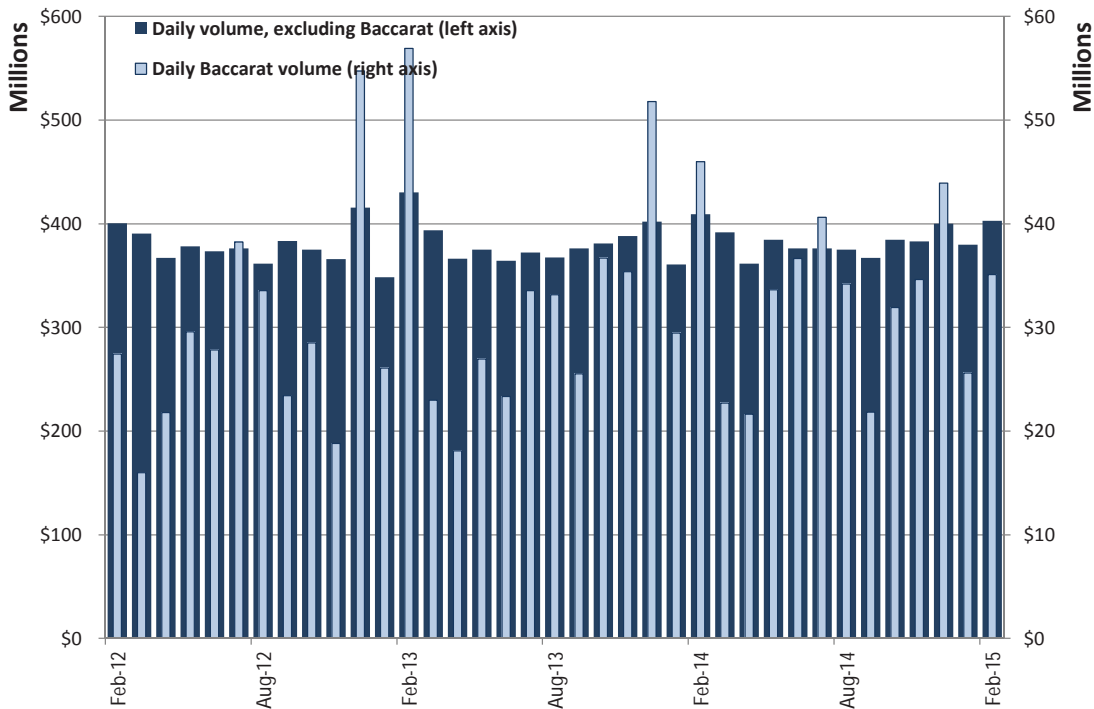


Average Daily Gaming Win

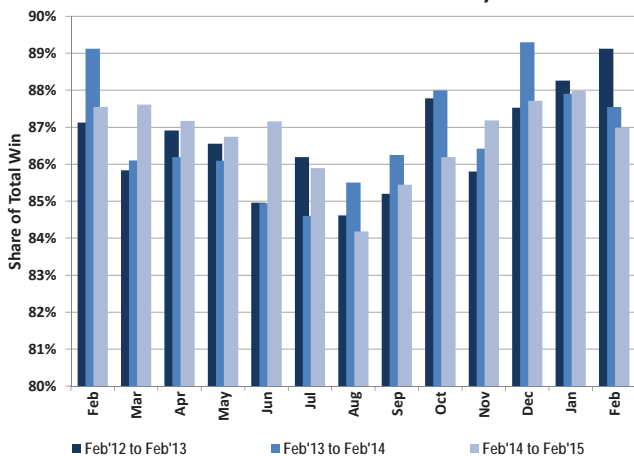


Statewide Gaming Activity										
Date	Slots		Games Excluding Baccarat		Baccarat		Tables	Total	Taxable	Pct. Fee due
	Coin-In	Win	Volume	Win	Volume	Win	Win	Win	Gross Revenue	after EFA
	Yr/Yr Pct. Chg.	Yr/Yr Pct. Chg.	Yr/Yr Pct. Chg.	Yr/Yr Pct. Chg.	Yr/Yr Pct. Chg.	Yr/Yr Pct. Chg.	Yr/Yr Pct. Chg.	Yr/Yr Pct. Chg.	Yr/Yr Pct. Chg.	Yr/Yr Pct. Chg.
Feb-13	(4.4)	(5.2)	3.8	9.2	100.2	131.4	(7.6)	15.1	(10.3)	(11.8)
Mar-13	(0.5)	2.0	(3.2)	5.4	43.6	88.0	(5.6)	6.8	9.2	7.6
Apr-13	(0.8)	1.4	10.7	(4.0)	(16.8)	(1.7)	(6.7)	(0.2)	8.8	5.6
May-13	0.0	(3.4)	(1.3)	7.2	(8.9)	25.4	(1.1)	1.4	(2.3)	6.9
Jun-13	(1.5)	2.8	(0.8)	(2.0)	(16.1)	(49.5)	8.5	(4.7)	11.1	13.8
Jul-13	(1.1)	(1.0)	6.5	(1.8)	(12.2)	(37.4)	3.3	(8.0)	(2.6)	(11.1)
Aug-13	0.2	(2.7)	12.1	22.3	(1.3)	55.6	5.0	11.2	(1.0)	(0.2)
Sep-13	(4.8)	3.8	8.1	2.5	8.9	49.9	0.5	7.4	(0.9)	(8.8)
Oct-13	(1.3)	(6.3)	3.0	(4.0)	28.7	16.7	9.4	(2.6)	4.6	12.1
Nov-13	0.5	(6.8)	7.8	41.8	88.2	81.4	8.3	11.9	(2.5)	1.2
Dec-13	(3.0)	13.3	(2.5)	(11.2)	(5.4)	28.2	(1.6)	9.6	0.2	1.1
Jan-14	3.4	(5.0)	0.4	9.8	12.9	(16.5)	7.3	(2.8)	3.9	0.2
Feb-14	(1.7)	(0.6)	(7.7)	(15.0)	(19.2)	(40.0)	0.1	(13.7)	(2.1)	(3.8)
Mar-14	(1.5)	3.8	4.7	8.4	(1.2)	36.1	0.5	7.6	4.7	7.6
Apr-14	(2.7)	(4.7)	(0.8)	0.1	19.4	39.1	2.6	(0.3)	(1.9)	(7.8)
May-14	0.1	(4.4)	4.8	8.8	24.8	85.5	(0.1)	8.1	(3.9)	(5.7)
Jun-14	(1.1)	7.7	3.9	(3.2)	57.0	155.0	(4.7)	14.4	0.3	(6.2)
Jul-14	(0.0)	(2.9)	(4.7)	3.5	21.1	13.9	(8.0)	0.7	(5.8)	(9.4)
Aug-14	1.9	(0.8)	2.8	(2.7)	3.2	(12.4)	(4.6)	(3.7)	2.5	10.0
Sep-14	(0.4)	0.1	(6.4)	(9.2)	(14.5)	(29.1)	(8.1)	(6.0)	4.5	7.5
Oct-14	3.5	0.7	(2.5)	2.8	(13.0)	(33.1)	(9.3)	(4.3)	2.1	9.5
Nov-14	(1.3)	5.9	(0.7)	(11.1)	(2.2)	(1.4)	(6.9)	0.0	4.9	(0.4)
Dec-14	1.1	0.3	3.8	3.8	(15.2)	(38.2)	(4.4)	(8.1)	10.3	31.3
Jan-15	4.7	(1.1)	16.8	8.2	(13.0)	69.1	(3.4)	7.7	(4.7)	(9.8)
Feb-15	1.5	4.9	(1.1)	0.9	(23.7)	(23.6)	(8.0)	(1.1)	1.2	1.0

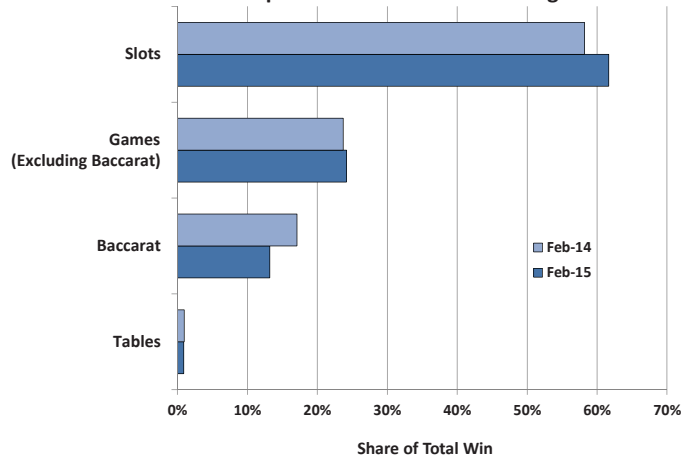
Statewide Average Daily Gaming Volume



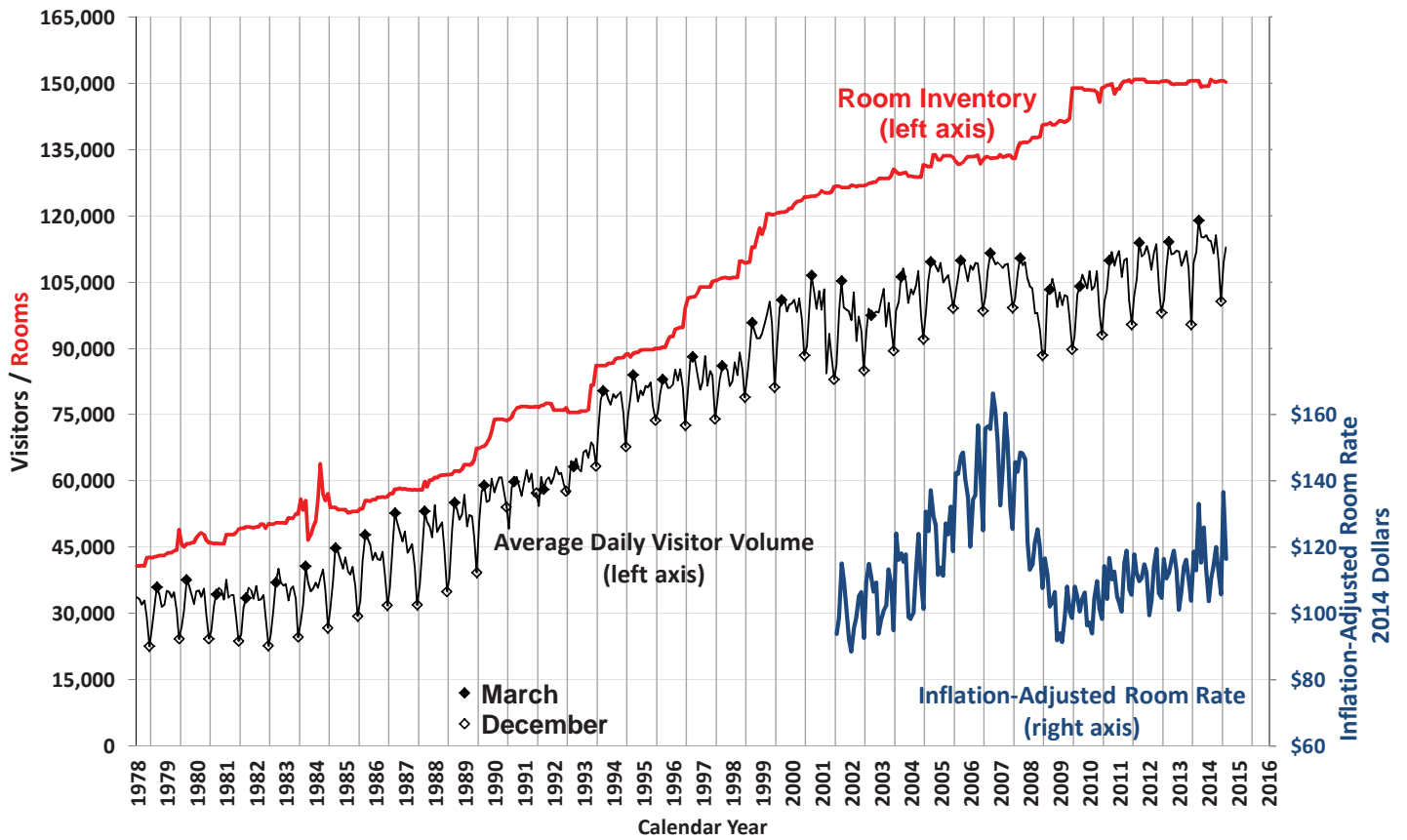
Share of Statewide Win from Clark County



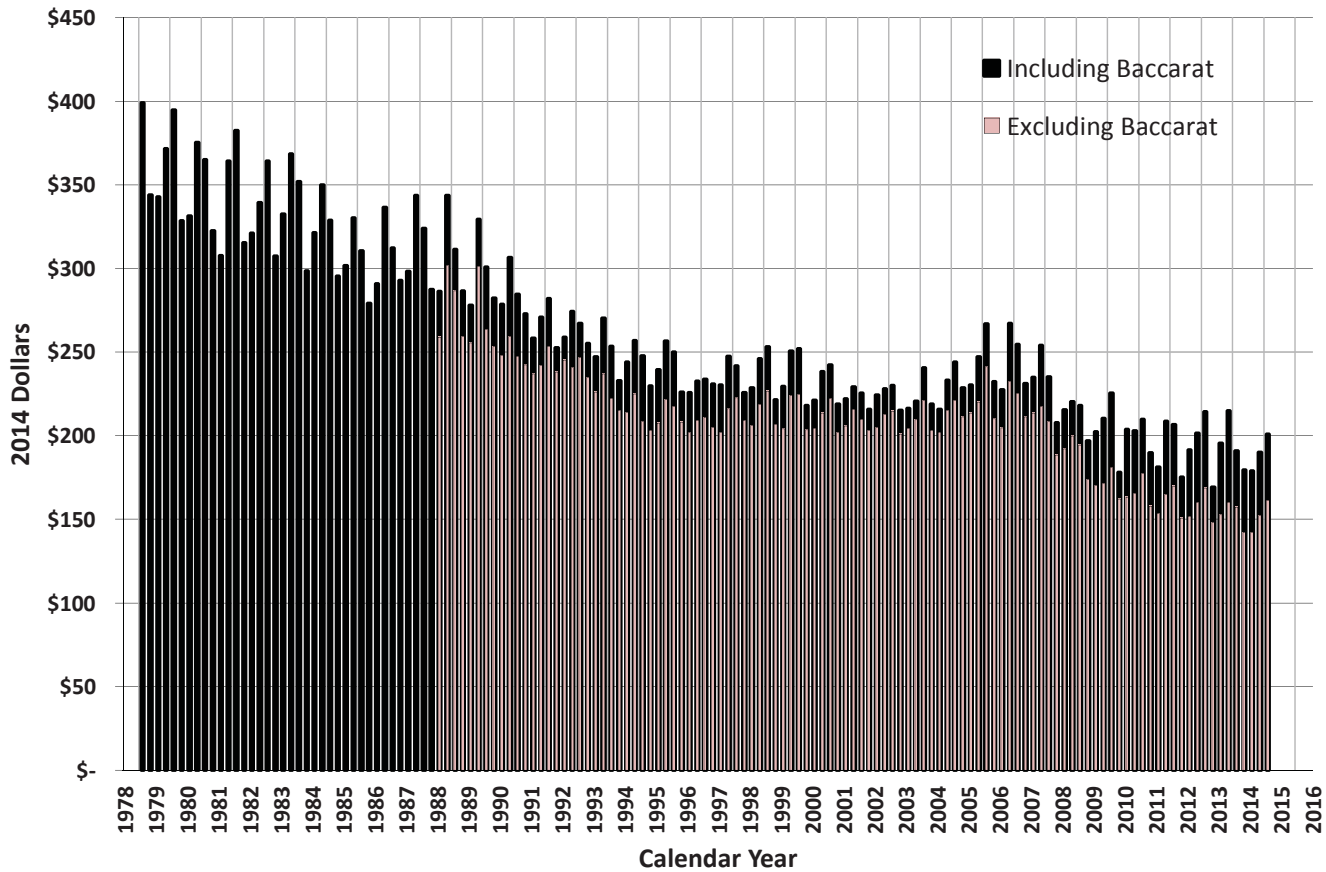
Components of Statewide Gaming Win



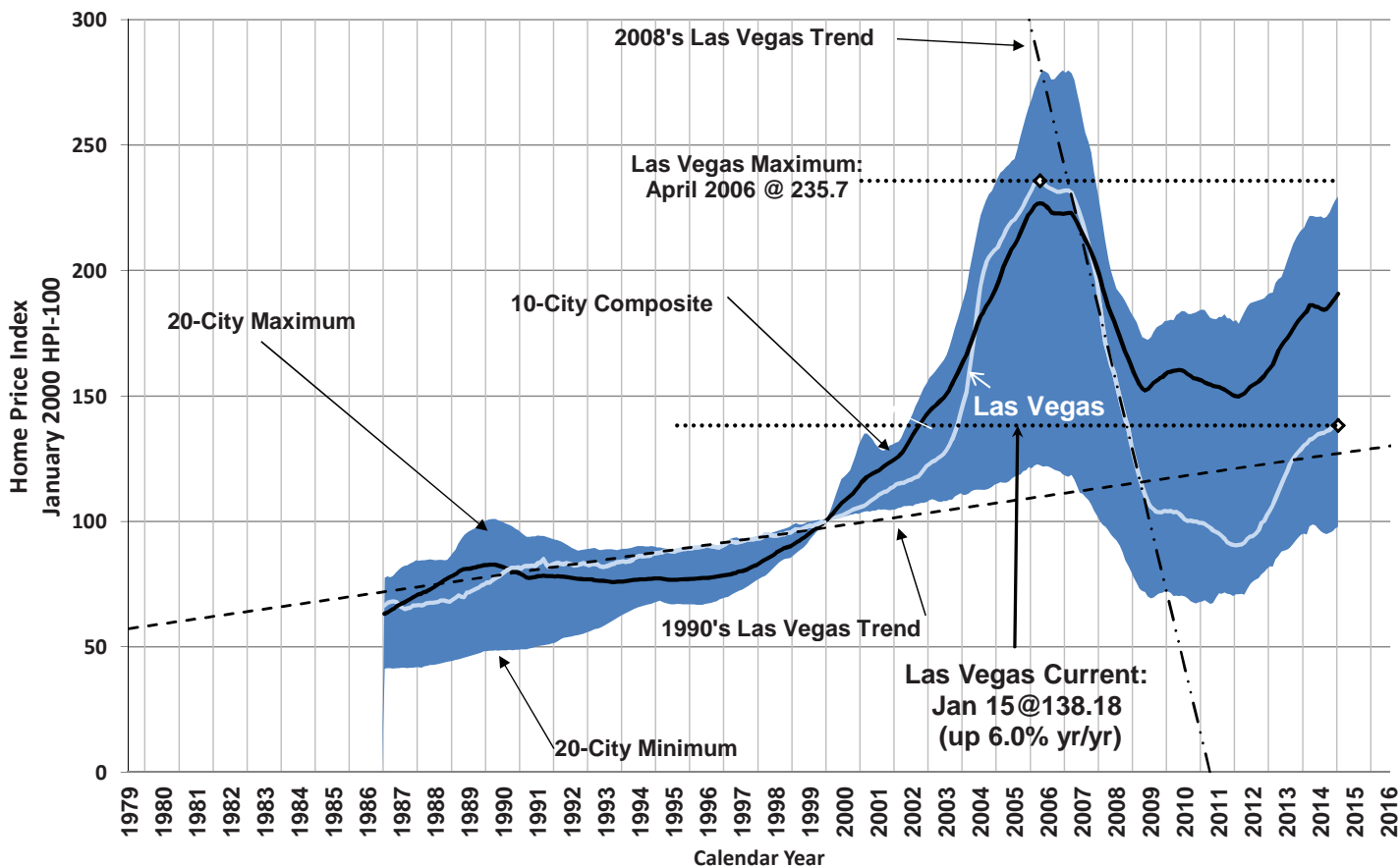
Las Vegas Visitors vs. Rooms



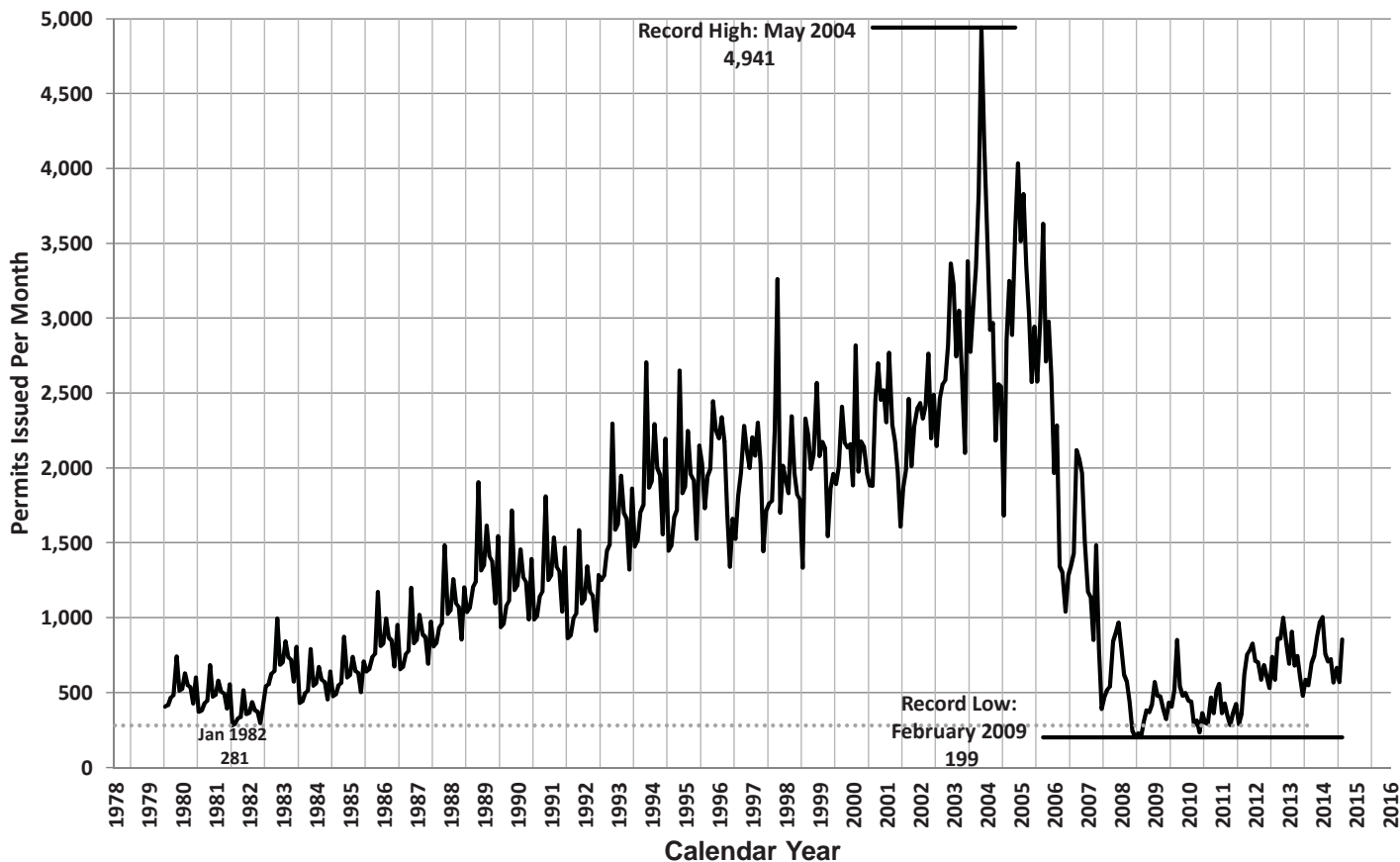
Average Las Vegas Gaming Win per Visitor (Inflation-Adjusted)



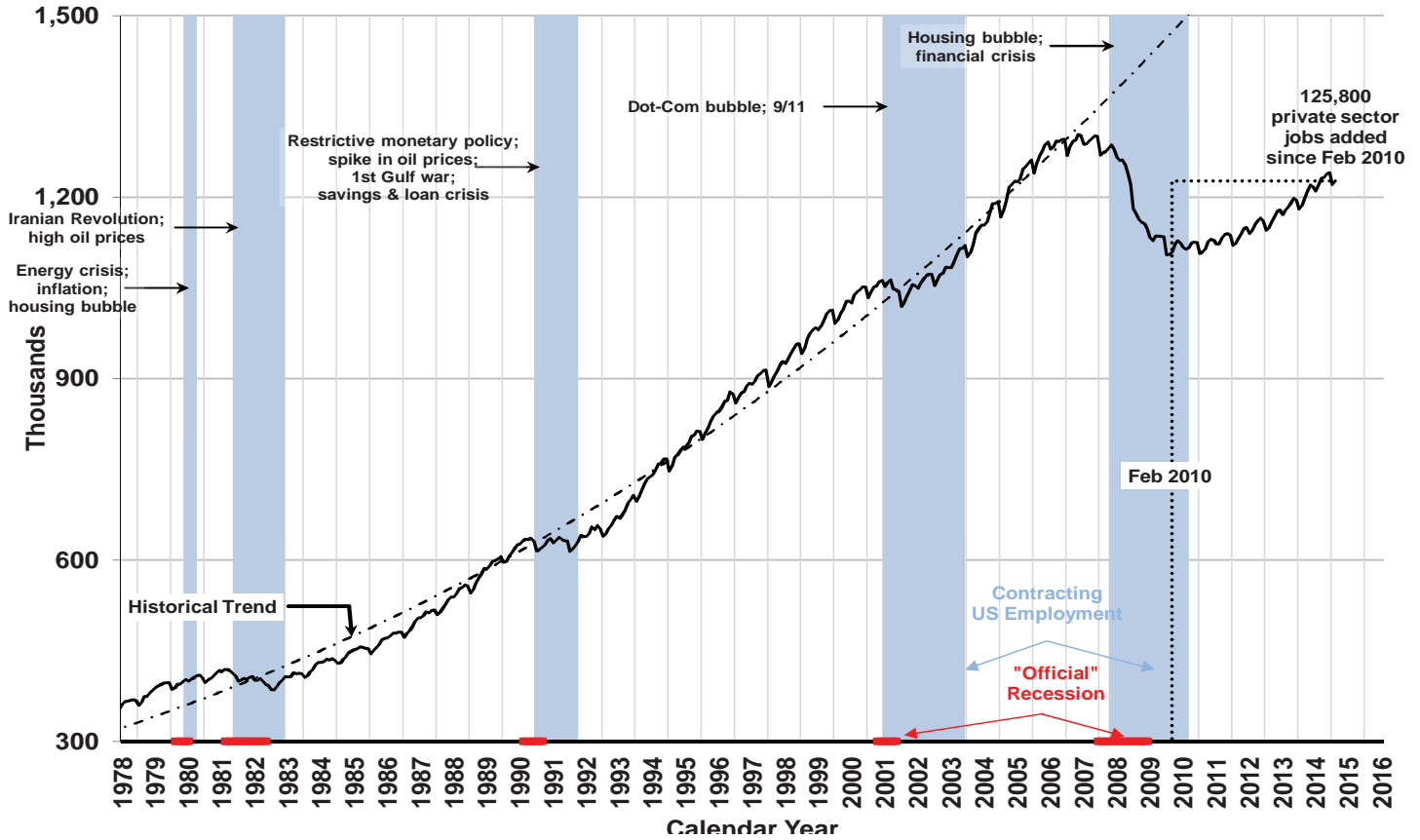
Case-Shiller Seasonally Adjusted Home Price Index



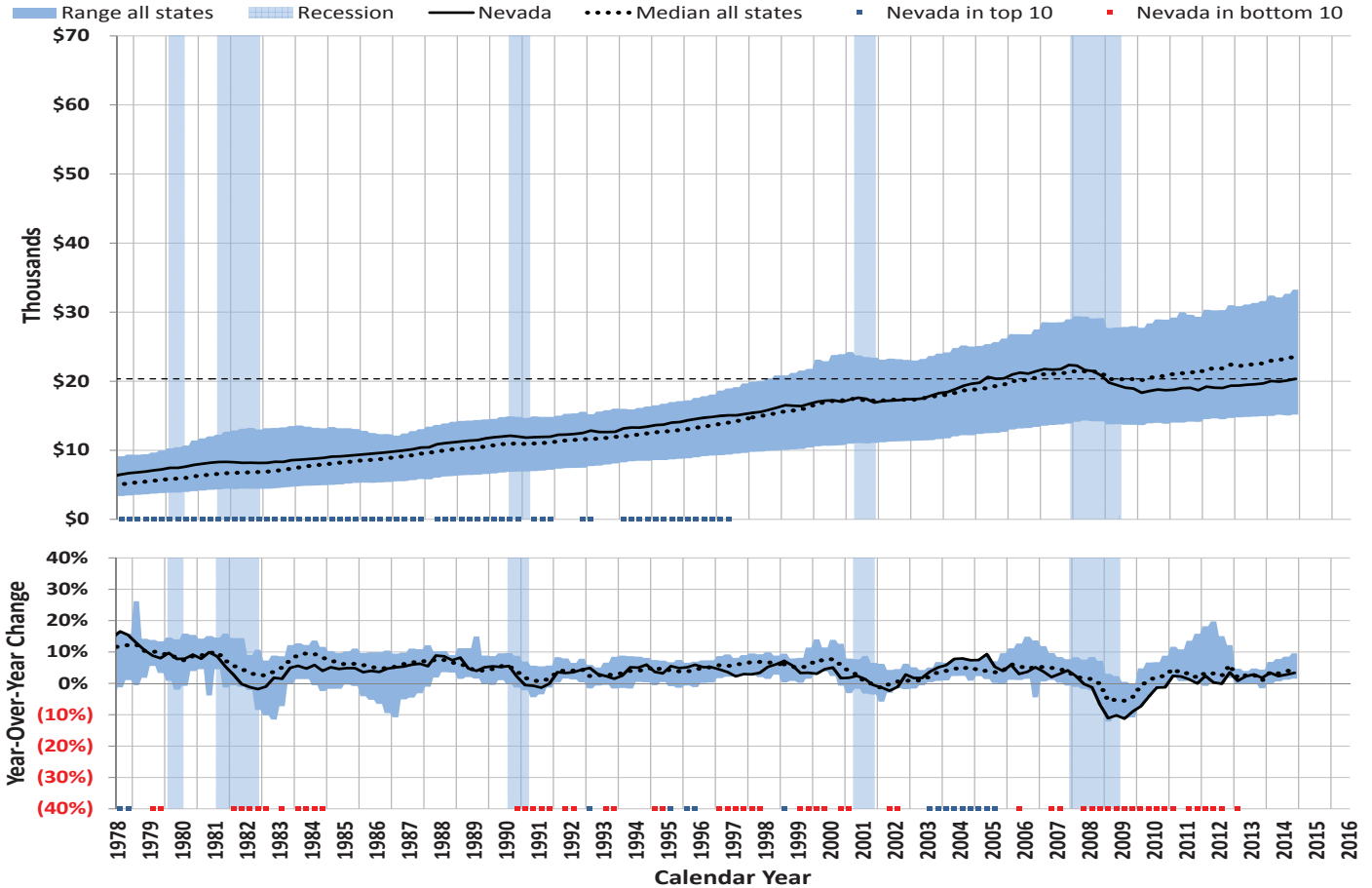
Nevada Single Family Home Permits Issued Each Month



Nevada Total Non-Farm Private & Public Sector Jobs



Per Capita Wages & Salaries



Statewide Employment by Sector

	Leisure & Hospitality				Trade, Transportation & Utilities				Professional Services				Education & Healthcare			
	Yr/Yr Change		Share of Total		Yr/Yr Change		Share of Total		Yr/Yr Change		Share of Total		Yr/Yr Change		Share of Total	
	(thou.)	%	%	Rank	(thou.)	%	%	Rank	(thou.)	%	%	Rank	(thou.)	%	%	Rank
February 2014	10.1	3.2	27.4	1	7.4	3.4	18.9	2	5.6	3.8	12.9	3	4.2	3.8	9.6	4
March 2014	11.4	3.6	27.6	1	9.4	4.4	18.8	2	5.3	3.6	12.9	3	4.4	4.0	9.6	4
April 2014	12.0	3.7	27.8	1	9.7	4.5	18.7	2	4.7	3.1	12.8	3	4.4	4.0	9.5	4
May 2014	13.8	4.2	27.8	1	8.2	3.7	18.7	2	4.3	2.8	12.7	3	4.3	3.9	9.5	4
June 2014	11.4	3.5	27.9	1	7.9	3.6	18.8	2	5.3	3.5	12.8	3	4.6	4.1	9.5	4
July 2014	10.5	3.2	28.1	1	7.5	3.4	18.9	2	4.9	3.3	12.6	3	4.8	4.3	9.6	4
August 2014	14.6	4.4	28.1	1	8.2	3.7	18.9	2	5.7	3.8	12.8	3	5.0	4.5	9.6	4
September 2014	14.1	4.3	27.8	1	8.7	3.9	18.8	2	7.6	5.1	12.7	3	4.8	4.3	9.5	4
October 2014	15.4	4.7	27.7	1	9.0	4.0	19.0	2	5.8	3.8	12.8	3	3.6	3.2	9.5	4
November 2014	14.8	4.6	27.4	1	6.7	2.9	19.3	2	7.9	5.2	13.0	3	4.4	3.9	9.5	4
December 2014	17.1	5.3	27.4	1	7.4	3.2	19.4	2	7.8	5.2	12.8	3	5.8	5.1	9.6	4
January 2015	16.6	5.2	27.8	1	8.8	3.9	19.1	2	4.8	3.1	12.9	3	5.4	4.8	9.7	4
February 2015	15.7	4.8	27.8	1	9.8	4.4	19.0	2	5.4	3.5	12.9	3	5.2	4.5	9.7	4

	Local Government				Construction				Financial Services				Manufacturing			
	Yr/Yr Change		Share of Total		Yr/Yr Change		Share of Total		Yr/Yr Change		Share of Total		Yr/Yr Change		Share of Total	
	(thou.)	%	%	Rank	(thou.)	%	%	Rank	(thou.)	%	%	Rank	(thou.)	%	%	Rank
February 2014	2.1	2.2	8.3	5	6.2	11.8	4.9	6	(3.2)	(15.5)	1.5	11	1.6	4.0	3.5	7
March 2014	2.1	2.2	8.3	5	5.9	11.0	5.0	6	(3.3)	(15.9)	1.5	11	1.4	3.5	3.4	7
April 2014	2.3	2.4	8.2	5	5.6	10.1	5.0	6	(0.8)	(3.8)	1.6	10	1.1	2.7	3.4	7
May 2014	1.6	1.6	8.1	5	6.8	12.2	5.1	6	(0.7)	(3.4)	1.6	10	1.1	2.7	3.4	7
June 2014	1.0	1.1	7.8	5	6.0	10.5	5.2	6	(0.7)	(3.4)	1.6	10	0.9	2.2	3.4	7
July 2014	1.3	1.5	7.5	5	7.0	12.1	5.4	6	(0.8)	(3.9)	1.6	10	1.0	2.5	3.4	7
August 2014	(0.4)	(0.4)	7.5	5	6.7	11.3	5.4	6	(0.6)	(2.8)	1.6	10	0.7	1.7	3.4	7
September 2014	0.9	0.9	7.9	5	6.7	11.2	5.4	6	(0.2)	(1.1)	1.6	10	0.6	1.5	3.4	7
October 2014	0.3	0.3	7.9	5	4.0	6.6	5.2	6	(0.5)	(2.2)	1.6	10	0.7	1.7	3.4	7
November 2014	(0.4)	(0.4)	7.9	5	4.6	7.7	5.2	6	(0.3)	(1.7)	1.6	10	0.8	1.9	3.4	7
December 2014	(1.0)	(1.0)	7.9	5	5.9	10.1	5.2	6	(0.1)	(0.6)	1.6	10	0.8	1.9	3.4	7
January 2015	(0.2)	(0.2)	8.0	5	4.5	7.7	5.1	6	(0.2)	(1.1)	1.4	11	0.2	0.5	3.4	7
February 2015	(0.2)	(0.2)	8.0	5	4.2	7.2	5.1	6	0.0	0.0	1.4	11	0.4	1.0	3.4	7

	Other Services				State Government				Federal Government				Information			
	Yr/Yr Change		Share of Total		Yr/Yr Change		Share of Total		Yr/Yr Change		Share of Total		Yr/Yr Change		Share of Total	
	(thou.)	%	%	Rank	(thou.)	%	%	Rank	(thou.)	%	%	Rank	(thou.)	%	%	Rank
February 2014	1.0	3.1	2.8	9	0.2	0.5	3.2	8	(0.4)	(2.2)	1.5	10	0.7	5.7	1.1	13
March 2014	1.1	3.3	2.8	9	0.4	1.0	3.2	8	(0.4)	(2.2)	1.5	10	0.2	1.6	1.1	13
April 2014	1.3	3.9	2.9	9	0.0	0.0	3.2	8	(0.5)	(2.7)	1.5	11	1.2	9.4	1.1	13
May 2014	1.6	4.7	2.9	9	0.9	2.4	3.2	8	(0.5)	(2.7)	1.5	11	1.8	13.8	1.2	12
June 2014	1.4	4.1	2.9	9	(1.2)	(3.3)	2.9	8	(0.4)	(2.2)	1.5	11	1.5	10.8	1.3	12
July 2014	1.6	4.7	3.0	8	0.8	2.3	2.9	9	(0.3)	(1.6)	1.5	11	0.3	2.3	1.1	13
August 2014	1.5	4.4	2.9	9	0.2	0.6	2.9	8	(0.3)	(1.6)	1.5	11	0.5	3.9	1.1	13
September 2014	1.7	5.0	2.9	9	2.0	5.5	3.1	8	(0.2)	(1.1)	1.5	11	0.6	4.7	1.1	13
October 2014	1.5	4.5	2.9	9	1.7	4.5	3.2	8	0.0	0.0	1.5	11	0.6	4.6	1.1	13
November 2014	0.9	2.7	2.8	9	1.1	2.9	3.2	8	0.2	1.1	1.5	11	0.4	3.0	1.1	13
December 2014	0.3	0.9	2.7	9	0.9	2.3	3.2	8	0.2	1.1	1.5	11	0.5	3.8	1.1	13
January 2015	0.6	1.8	2.8	9	(1.1)	(3.1)	2.9	8	0.2	1.1	1.5	10	0.7	5.5	1.1	13
February 2015	0.9	2.7	2.8	9	(1.3)	(3.4)	3.0	8	0.3	1.7	1.5	10	0.5	3.8	1.1	13

	Natural Resources				All Non-Farm Jobs			All Private Non-Farm Jobs			All Public Non-Farm Jobs		
	Yr/Yr Change		Share of Total		Total	Yr/Yr Change		Total	Yr/Yr Change		Total	Yr/Yr Change	
	(thou.)	%	%	Rank	(thou.)	(thou.)	%	(thou.)	(thou.)	%	(thou.)	(thou.)	%
February 2014	(1.4)	(9.0)	1.2	12	1,186.7	37.8	3.3	1,032.9	35.9	3.6	153.8	1.9	1.3
March 2014	(1.2)	(7.8)	1.2	12	1,198.3	40.0	3.5	1,043.1	37.9	3.8	155.2	2.1	1.4
April 2014	(1.1)	(7.2)	1.2	12	1,209.0	40.9	3.5	1,054.1	39.1	3.9	154.9	1.8	1.2
May 2014	(1.0)	(6.5)	1.2	13	1,219.7	43.3	3.7	1,064.1	41.3	4.0	155.6	2.0	1.3
June 2014	(0.9)	(5.8)	1.2	13	1,216.9	37.9	3.2	1,068.1	38.5	3.7	148.8	(0.6)	(0.4)
July 2014	(1.1)	(7.0)	1.2	12	1,209.8	38.6	3.3	1,065.5	36.8	3.6	144.3	1.8	1.3
August 2014	(1.0)	(6.4)	1.2	12	1,220.9	42.1	3.6	1,075.9	42.6	4.1	145.0	(0.5)	(0.3)
September 2014	(0.6)	(4.0)	1.2	12	1,230.9	47.9	4.0	1,077.1	45.2	4.4	153.8	2.7	1.8
October 2014	(0.4)	(2.7)	1.2	12	1,232.4	42.8	3.6	1,077.4	40.8	3.9	155.0	2.0	1.3
November 2014	(0.4)	(2.7)	1.2	12	1,238.8	40.7	3.4	1,083.7	39.8	3.8	155.1	0.9	0.6
December 2014	(0.5)	(3.4)	1.1	12	1,240.3	45.0	3.8	1,084.8	44.9	4.3	155.5	0.1	0.1
January 2015	(0.4)	(2.8)	1.1	12	1,220.5	40.1	3.4	1,070.6	41.2	4.0	149.9	(1.1)	(0.7)
February 2015	(0.3)	(2.1)	1.1	12	1,227.1	40.4	3.4	1,074.5	41.6	4.0	152.6	(1.2)	(0.8)

Per Capita Personal Income

