

The SILVER SAGE

AN OVERVIEW OF NEVADA'S ECONOMY BY THE SAGES AT THE DEPARTMENT OF ADMINISTRATION



		US	Nevada	
		Rate	Rate	Rank 1 = Best
Foreclosure Filings Rate	Jul '15	0.09%	0.17%	47
Home Price Index (FHFA)*	2015q2 v 2014q2	5.4%	10.4%	2
	2015q2 v 2010q2	16.6%	42.1%	1
Wage & Salary Disbursements	2015q1 v 2014q1	4.8%	4.3%	27
Personal Income	2015q1 v 2014q1	4.4%	4.6%	19
Employment*	Jul '15 v Jul '14	2.1%	3.6%	2
Unemployment**	Jul '15	5.3%	6.8%	49

*Not seasonally adjusted.
**Seasonally adjusted.

It is remarkable how often
the first interpretations of new evidence
have confirmed the preconceptions of its discoverer.
— John Reader

State General Fund Revenues Historical Collections

	FY 2012			FY 2013			FY 2014			FY 2015		
	Total	Yr/Yr Change		Total	Yr/Yr Change		Total	Yr/Yr Change		Total	Yr/Yr Change	
	millions	millions	%	millions	millions	%	millions	millions	%	millions	millions	%
General Fund Revenue Sources												
Sales Tax	\$842.9	\$47.4	6.0	\$886.7	\$45.7	5.4	\$931.3	\$42.7	4.8	\$994.8	\$63.4	6.8
Gaming Percentage Fees Collections [1]	653.7	1.5	0.2	678.9	25.2	3.9	682.3	3.5	0.5	693.2	10.9	1.6
Modified Business Tax - Financial & NonFinancial [2, 3, 4]	369.7	(12.2)	(3.2)	386.6	16.9	4.6	384.9	(1.7)	(0.4)	411.9	27.0	7.0
Insurance Premium Tax [2, 4]	236.8	2.0	0.8	248.5	11.7	5.0	263.5	15.0	6.0	292.7	29.1	11.1
Live Entertainment Tax - Gaming	125.3	6.8	5.7	125.7	0.4	0.3	139.2	13.4	10.7	130.9	(8.3)	(6.0)
Cigarette Tax [5]	83.0	(3.0)	(3.5)	83.0	0.0	0.1	79.6	(3.4)	(4.1)	92.8	13.1	16.5
Commercial Recordings	66.7	(6.9)	(9.3)	65.1	(1.6)	(2.4)	66.7	1.6	2.5	68.8	2.2	3.3
Real Property Transfer Tax [2]	48.4	(3.2)	(6.2)	55.0	6.6	13.7	60.0	5.1	9.2	64.2	4.2	6.9
Liquor Tax	40.6	1.2	3.0	39.9	(0.8)	(1.9)	41.8	2.0	4.9	42.7	0.9	2.1
Governmental Services Tax-Depreciation [6]	62.4	0.8	1.3	63.5	1.1	1.8	62.3	(1.2)	(1.9)	62.9	0.6	1.0
Governmental Services Tax-Commissions & Penalties [7]	24.7	24.7	n/a	25.1	0.4	1.8	0.0	(25.1)	(100.0)	28.8	28.8	n/a
Business License Fee [8]	64.8	10.3	19.0	69.0	4.2	6.5	72.2	3.2	4.6	75.4	3.2	4.4
State Share Various Local SUT	24.3	1.4	6.0	25.7	1.4	5.8	27.2	1.4	5.6	29.0	1.8	6.5
State Share LSST [9]	8.3	0.6	7.5	8.8	0.5	5.8	9.2	0.4	4.6	9.7	0.5	5.8
Live Entertainment Tax - NonGaming	11.6	(0.5)	(3.8)	11.7	0.1	0.5	15.0	3.3	28.0	15.0	(0.0)	(0.1)
Quarterly Slots [2, 10]	21.1	0.4	2.0	20.7	(0.4)	(2.0)	19.7	(1.0)	(4.9)	19.5	(0.2)	(1.2)
Other General Fund Revenues [11]	185.2	(45.6)	(19.8)	198.4	13.2	7.1	168.4	(30.0)	(15.1)	176.4	8.0	4.7
Net Proceeds of Minerals [12]	120.4	8.9	8.0	111.3	(9.1)	(7.6)	26.2	(85.1)	(76.4)	51.7	25.5	97.3
Unclaimed Property [13]	97.4	13.6	16.2	32.9	(64.5)	(66.2)	17.5	(15.5)	(46.9)	24.3	6.8	39.1
Year-End Transfers	19.1	(4.5)	(19.1)	19.2	0.1	0.6	0.0	(19.2)	(100.0)	n/a	n/a	n/a
Totals	\$3,106.4	(\$69.0)	(2.2)	\$3,157.7	\$51.3	1.7	\$3,066.9	(\$90.8)	(2.9)	\$3,284.5	\$217.5	7.1
Lodging Tax [14]	\$126.4	\$13.9	12.3	\$128.7	\$2.3	1.8	\$141.1	\$12.4	9.6	\$150.5	\$9.4	6.6

[1] Gaming Percentage Fees are reported in the month following the month of actual gaming activity.

[2] Amounts are reported quarterly.

[3] The rate of the Modified Business Tax for non-financial institutions was changed in FY 2010, FY 2012 and again in FY 2014, which accounts for most of the year-over-year change in revenues in those years. In FY 2010 and FY 2011, the rate was 0.5% on taxable wages up to \$62,500 per quarter and 1.17% on taxable wages above \$62,500. In FY 2012 and FY 2013, taxable wages up to \$62,500 per quarter were not taxed, while those above \$62,500 were taxed at 1.17%. In FY 2014 and FY 2015, taxable wages up to \$85,000 per quarter were not taxed, while those above \$85,000 were taxed at 1.17%. Starting in FY 2016, the rate is permanently increased to 1.475% on taxable wages that exceed \$50,000 per quarter.

[4] The 2013 and 2015 Regular Sessions and 2014 Special Session of the State Legislature authorized several tax credit programs that directly reduce the tax liability of a taxpayer and thereby decrease certain General Fund revenue collections.

[5] The State imposes a tax of 80 cents per package of 20 cigarettes, 70 cents of which is retained by the State. The 2009 Legislature permanently lowered the collection allowance provided to a taxpayer for collecting and remitting cigarette taxes from 0.5% to 0.25%, effective July 1, 2009. The excise tax on cigarettes increases to \$1.80 beginning on July 1, 2015, of which \$1.70 is deposited into the State General Fund.

[6] Governmental Services Tax proceeds from the 10% depreciation schedule change are transferred to the General Fund in FY 2012, FY 2013, FY 2015, and FY 2016. In FY 2017, 50 percent of the proceeds are deposited in the General Fund and 50 percent will be deposited in the State Highway Fund. They are scheduled to be fully retained by the Department of Motor Vehicles in FY 2018 and beyond.

[7] Governmental Services Tax proceeds from the commissions and penalties are transferred to the General Fund in FY 2015 only. The amount transferred cannot exceed \$23,724,000 in commissions and \$5,037,000 in penalties.

[8] Business License Fees for initial application and annual renewal were increased to \$200 from \$100 beginning in FY 2010. In FY 2016, these fees increase to \$500 for corporations, but stay at \$200 for all other businesses.

[9] The rate of the Local School Support Tax was increased in FY 2010 through FY 2015 to 2.60% from 2.25% previously. Effective July 1, 2015, the 2.60% rate is made permanent.

[10] In FY 2012 and FY 2013, the General Fund retained half of the quarterly fee per slot machine that had been previously dedicated to the Account to Support Programs for the Prevention and Treatment of Problem Gaming.

[11] FY 2010 and FY 2011 included several large diversions to the General Fund (most notably, a portion of property tax revenues collected by Clark and Washoe counties). These diversions were not continued in the 2011-2013 biennium. Their exclusion accounts for most of the decline between FY 2011 and FY 2012.

[12] Prior to FY 2010, the Net Proceeds of Minerals Tax was collected on net proceeds from the calendar year ending in December of the given fiscal year. From FY 2010 through FY 2013, these taxes were collected based on an estimate of the net proceeds for the calendar year beginning in January of the given fiscal year and ending six months after the close of the given fiscal year, with a "true-up" to account for actual net proceeds due in the following fiscal year. In addition, in FY 2012 and FY 2013, the deduction for health and industrial insurance expenses was eliminated. The prepayment of the Net Proceeds of Minerals Tax is extended to June 30, 2016. The insurance deduction provision is scheduled to revert back to FY 2009 methodology on January 1, 2017.

[13] The period after which property is presumed to have been abandoned was reduced to 2 years from 3 years under certain conditions, producing a large increase in unclaimed property revenue in FY 2011 and FY 2012 compared with previous years.

[14] Lodging tax revenues were deposited into the General Fund in FY 2010 and FY 2011; they are deposited into the Distributive School Account beginning in FY 2012 and are scheduled to be deposited into the Supplemental School Account in FY 2018 and thereafter.

**State General Fund Revenues
Budgeted Amounts Based on May 2015 Economic Forum Forecast with Adjustment for Legislative Action**

General Fund Revenue Sources	FY 2015 Budget			FY 2015 Collections vs Budget		
	Total	Yr/Yr Change	%	Through	Year-to-Date	
	millions	millions			Actual	Over (Under)
				millions	millions	%
Sales Tax	\$999.0	\$67.7	7.3	Year-End	\$994.8	(\$4.2) (0.4)
Gaming Percentage Fees Collections [1]	683.7	1.4	0.2	Year-End	693.2	9.5 1.4
Modified Business Tax - Financial & Non-Financial [2, 3, 4]	403.7	18.9	4.9	Year-End	411.9	8.2 2.0
Insurance Premium Tax [2, 4]	294.4	30.9	11.7	Year-End	292.7	(1.8) (0.6)
Live Entertainment Tax - Gaming	131.5	(7.7)	(5.5)	Year-End	130.9	(0.6) (0.5)
Cigarette Tax [5]	79.7	0.0	0.1	Year-End	92.8	13.1 16.4
Commercial Recordings	67.7	1.0	1.5	Year-End	68.8	1.2 1.7
Real Property Transfer Tax [2]	65.4	5.4	8.9	Year-End	64.2	(1.2) (1.8)
Liquor Tax	43.5	1.7	4.0	Year-End	42.7	(0.8) (1.9)
Governmental Services Tax-Depreciation [6]	62.8	0.6	0.9	Year-End	62.9	0.0 0.1
Governmental Services Tax-Commissions & Penalties [7]	28.8	28.8	0.0	Year-End	28.8	0.0 0.0
Business License Fee [8]	74.1	1.9	2.6	Year-End	75.4	1.3 1.7
State Share Various Local SUT	29.1	1.9	6.9	Year-End	29.0	(0.1) (0.4)
State Share LSST [9]	9.7	0.5	5.9	Year-End	9.7	(0.0) (0.1)
Live Entertainment Tax - NonGaming	15.2	0.2	1.3	Year-End	15.0	(0.2) (1.3)
Quarterly Slots [2, 10]	19.5	(0.2)	(1.1)	Year-End	19.5	(0.0) (0.1)
Other General Fund Revenues	170.1	1.8	1.0	Year-End	176.4	6.2 3.7
Net Proceeds of Minerals [11]	50.8	24.5	93.6	Year-End	51.7	1.0 1.9
Unclaimed Property [12]	11.8	(5.6)	(32.3)	Year-End	24.3	12.5 105.5
Totals	\$3,240.5	\$173.5	5.7		\$3,284.5	\$44.0 1.4
Lodging Tax [13]	\$151.0	\$9.9	7.0	Year-End	\$150.5	(\$0.6) (0.4)

[1] Gaming Percentage Fees are reported in the month following the month of actual gaming activity.

[2] Amounts are reported quarterly.

[3] The rate of the Modified Business Tax for non-financial institutions was changed in FY 2010, FY 2012 and again in FY 2014, which accounts for most of the year-over-year change in revenues in those years. In FY 2010 and FY 2011, the rate was 0.5% on taxable wages up to \$62,500 per quarter and 1.17% on taxable wages above \$62,500. In FY 2012 and FY 2013, taxable wages up to \$62,500 per quarter were not taxed, while those above \$62,500 were taxed at 1.17%. In FY 2014 and FY 2015, taxable wages up to \$85,000 per quarter were not taxed, while those above \$85,000 were taxed at 1.17%. Starting in FY 2016, the rate is permanently increased to 1.475% on taxable wages that exceed \$50,000 per quarter.

[4] The 2013 and 2015 Regular Sessions and 2014 Special Session of the State Legislature authorized several tax credit programs that directly reduce the tax liability of a taxpayer and thereby decrease certain General Fund revenue collections.

[5] The State imposes a tax of 80 cents per package of 20 cigarettes, 70 cents of which is retained by the State. The 2009 Legislature permanently lowered the collection allowance provided to a taxpayer for collecting and remitting cigarette taxes from 0.5% to 0.25%, effective July 1, 2009. The excise tax on cigarettes increases to \$1.80 beginning on July 1, 2015, of which \$1.70 is deposited into the State General Fund.

[6] Governmental Services Tax proceeds from the 10% depreciation schedule change are transferred to the General Fund in FY 2012, FY 2013, FY 2015, and FY 2016. In FY 2017, 50 percent of the proceeds are deposited in the General Fund and 50 percent will be deposited in the State Highway Fund. They are scheduled to be fully retained by the Department of Motor Vehicles in FY 2018 and beyond.

[7] Governmental Services Tax proceeds from the commissions and penalties are transferred to the General Fund in FY 2015 only. The amount transferred cannot exceed \$23,724,000 in commissions and \$5,037,000 in penalties.

[8] Business License Fees for initial application and annual renewal were increased to \$200 from \$100 beginning in FY 2010. In FY 2016, these fees increase to \$500 for corporations, but stay at \$200 for all other businesses.

[9] The rate of the Local School Support Tax was increased in FY 2010 through FY 2015 to 2.60% from 2.25% previously. Effective July 1, 2015, the 2.60% rate is made permanent.

[10] In FY 2012 and FY 2013, the General Fund retained half of the quarterly fee per slot machine that had been previously dedicated to the Account to Support Programs for the Prevention and Treatment of Problem Gaming.

[11] Prior to FY 2010, the Net Proceeds of Minerals Tax was collected on net proceeds from the calendar year ending in December of the given fiscal year. From FY 2010 through FY 2013, these taxes were collected based on an estimate of the net proceeds for the calendar year beginning in January of the given fiscal year and ending six months after the close of the given fiscal year, with a "true-up" to account for actual net proceeds due in the following fiscal year. In addition, in FY 2012 and FY 2013, the deduction for health and industrial insurance expenses was eliminated. The prepayment of the Net Proceeds of Minerals Tax is extended to June 30, 2016. The insurance deduction provision is scheduled to revert back to FY 2009 methodology on January 1, 2017.

[12] The period after which property is presumed to have been abandoned was reduced to 2 years from 3 years under certain conditions, producing a large increase in unclaimed property revenue in FY 2011 and FY 2012 compared with previous years.

[13] Lodging tax revenues were deposited into the General Fund in FY 2010 and FY 2011; they are deposited into the Distributive School Account beginning in FY 2012 and are scheduled to be deposited into the Supplemental School Account in FY 2018 and thereafter.

FY 2015 Tax Credit Summary

Year End	Revenues Impacted by Credits							Sub-totals by Credit Type		
	Modified Business Tax				Insurance	Gaming				
	Non-Financial	Financial	Mining	Total	Premium Tax	Percentage Fees	Redeemed	Allowed	Remaining	
Credit type										
Film	\$ -	\$ -	\$ -	\$ -	\$ -	\$ -	\$ -	\$ -	\$5,200,000	\$5,200,000
Economic Development	\$ -	\$ -	\$ -	\$ -	\$ -	\$ -	\$ -	\$ -		
Catalyst Account	\$ -	\$ -	\$ -	\$ -	\$ -	\$ -	\$ -	\$ -		
Education Choice	\$ -	\$ -	\$ -	\$ -	\$ -	\$ -	\$ -	\$ -		
College Savings	\$ -	\$ -	\$ -	\$ -	\$ -	\$ -	\$ -	\$ -		
Commerce Tax	\$ -	\$ -	\$ -	\$ -	\$ -	\$ -	\$ -	\$ -		
New Markets					\$ 12,410,882		\$ 12,410,882	\$13,800,000		\$1,389,118
Sub-totals by Revenue Source										
Redeemed	\$ -	\$ -	\$ -	\$ -	\$ 12,410,882	\$ -				
Revenue Source										
Gross	\$ 387,769,692	\$ 24,144,270	\$ -	\$ 411,913,962	\$ 305,075,537	\$ 693,232,048				
Credits	\$ -	\$ -	\$ -	\$ -	\$ 12,410,882	\$ -				
Collections Net of Credits	\$ 387,769,692	\$ 24,144,270	\$ -	\$ 411,913,962	\$ 292,664,655	\$ 693,232,048				

Transferable Film Tax Credit Program: The 2013 Regular Session of the State Legislature authorized a four-year pilot program of transferable tax credits issued for qualified film productions completed in the State that may be used against the modified business tax, insurance premium tax and/or the gaming percentage fee tax. The legislation authorized up to \$20 million per fiscal year for a total of \$80 million. However, the provisions of the pilot program were amended in the 2014 Special Session of the State Legislature, reducing the total amount of credits that may be approved to \$10 million. The 2015 Regular Session of the State Legislature made the transferable film tax credit program permanent but limited the amount of transferable tax credits to the amount appropriated by the State Legislature for that purpose for that fiscal year. The 2015 Regular Session of the State Legislature did not appropriate additional funding for this program for either FY 2016 or FY 2017.

Economic Development Transferable Tax Credits Program: The 2014 Special Session of the State Legislature required the Governor's Office of Economic Development (GOED) to issue transferable tax credits for certain qualifying projects that may be used against the modified business tax, insurance premium tax and/or the gaming percentage fee tax. A qualifying project is required to be located within the geographical borders of the State of Nevada, make a total new capital investment in the State of at least \$3.5 billion during the 10-year period immediately following approval of the application, and employ Nevada residents in at least half of the project's construction jobs and operational jobs. The amount of transferable tax credits is equal to \$12,500 for each qualified employee employed by the participants in the project (to a maximum of 6,000 employees), plus 5% of the first \$1 billion and 2.8% of the next \$2.5 billion in new capital investment in the State made collectively by the participants in the qualifying project. The amount of tax credits approved by GOED may not exceed \$45 million per fiscal year (although any unissued credits may be issued in a subsequent fiscal year), and GOED may not issue total tax credits in excess of \$195 million under the program. The program will expire on June 30, 2036.

Catalyst Account Transferable Tax Credit Program: The 2015 Regular Session of the State Legislature authorized the Governor's Office of Economic Development (GOED) to approve transferable tax credits that may be used against the modified business tax, insurance premium tax and gaming percentage fee tax to new or expanding businesses to promote the economic development of Nevada. The total amount of transferable tax credits that may be issued is \$500,000 in FY 2016, \$2 million in FY 2017 and \$5 million in each fiscal year thereafter.

Nevada Educational Choice Scholarship Tax Credit Program: The 2015 Regular Session of the State Legislature authorized a taxpayer who makes a donation of money to certain scholarship organizations to receive a dollar-for-dollar credit against the taxpayer's liability for the modified business tax. The total amount of tax credits that may be approved by the Department of Taxation for this program is \$5 million in FY 2016, \$5.5 million in FY 2017 and 110% of the total amount of credits authorized in the previous year for all subsequent fiscal years.

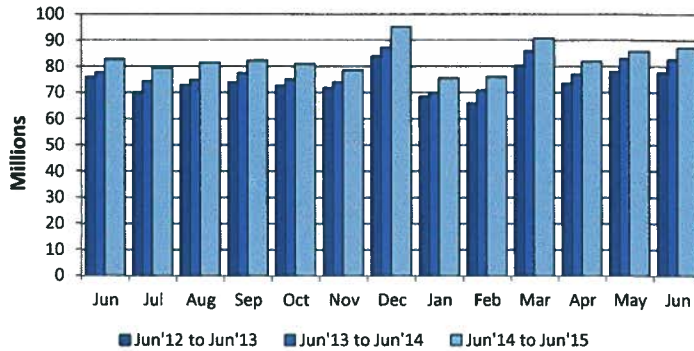
College Savings Plan Employer Matching Employee Contribution Tax Credit Program: The 2015 Regular Session of the State Legislature authorized a tax credit against the modified business tax to certain employers who match the contributions of an employee to one of the college savings plans offered through the Nevada Higher Education Prepaid Tuition Program and/or the Nevada College Savings Program. The provisions relating to the Nevada College Savings Program are effective January 1, 2016 and provisions relating to the Higher Education Prepaid Tuition Program are effective July 1, 2016. The amount of the tax credit is equal to 25% of the matching contribution, not to exceed \$500 per contributing employee per year, and any unused credits may be carried forward for up to 5 years.

Commerce Tax Credit: The 2015 Regular Session of the State Legislature enacted a levy on the gross revenue of a business which is earned in the State of Nevada effective July 1, 2015. The first \$4,000,000 per year in gross revenues earned in the State of Nevada is exempt from the tax which is known as the commerce tax. Businesses which are required to pay the commerce tax are entitled to a credit of 50% of their commerce tax liability against their modified business tax. Businesses are required to use the credit in the same fiscal year as the commerce tax is paid.

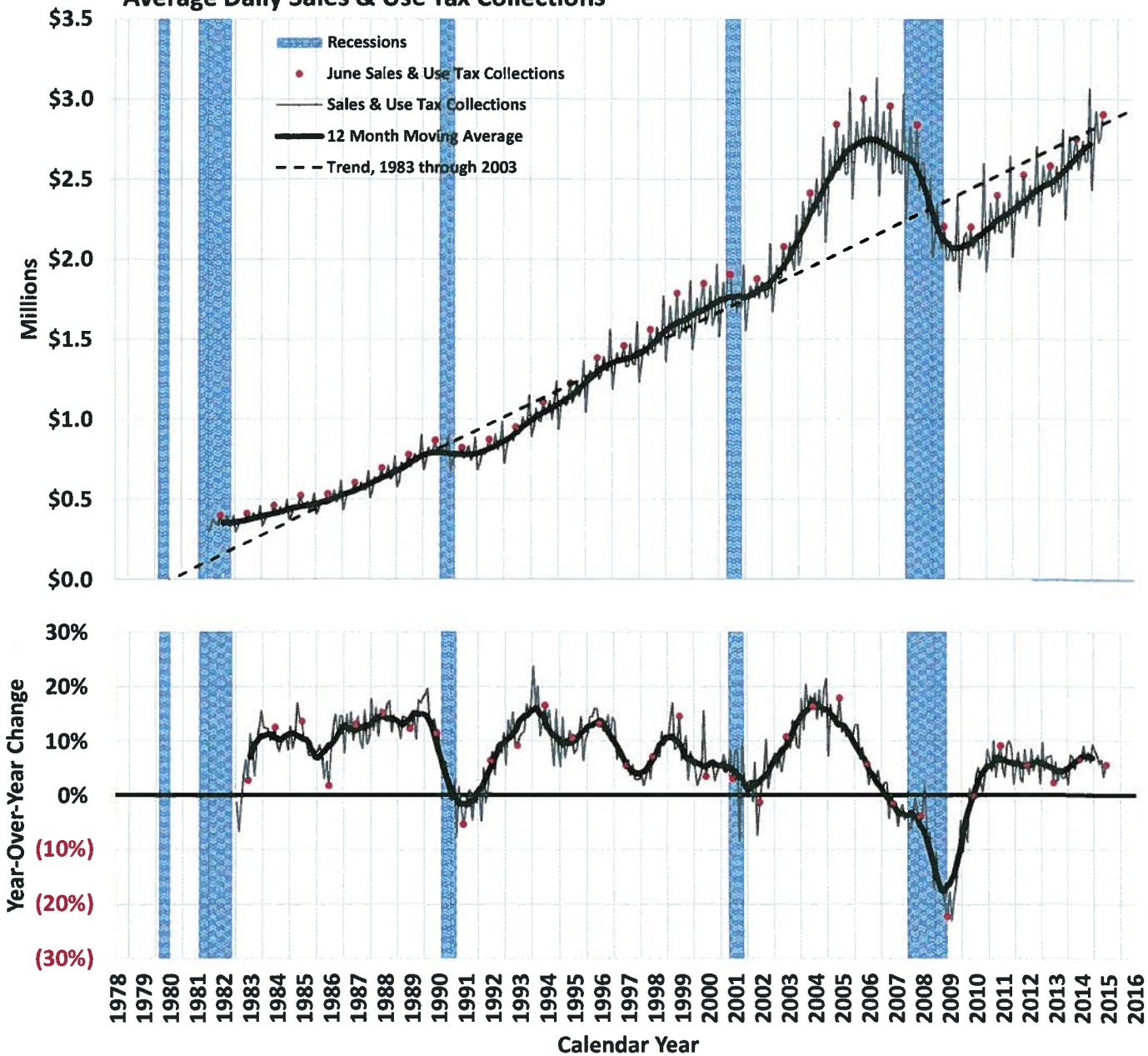
Nevada New Markets Jobs Act Tax Credit Program: The 2013 Regular Session of the State Legislature authorized the Nevada New Market Jobs Act which allows insurance companies to receive a credit against the insurance premium tax in exchange for a qualified equity investment in one or more community development organizations, primarily for local or minority-owned entities in under-served zones in the State. The State Department of Business and Industry may certify up to \$200 million in qualified equity investments. In exchange for making the qualified equity investment, insurance companies are entitled to receive a credit against the insurance premium tax in an amount equal to 58% of the total qualified equity investment certified by the Department of Business and Industry. Under the provisions of the program, the insurance companies were allowed to begin taking tax credits in the third quarter of FY 2015.

2% General Fund Sales & Use Tax Collections

	Total	Year/Year Change	
	(millions)	(millions)	%
June 2014	\$82.7	\$5.1	6.6
July 2014	79.4	5.2	7.0
August 2014	81.4	6.7	9.0
September 2014	82.2	4.9	6.3
October 2014	80.9	5.9	7.9
November 2014	78.5	4.4	6.0
December 2014	95.2	8.1	9.3
January 2015	75.5	5.7	8.2
February 2015	76.0	5.2	7.3
March 2015	90.8	5.0	5.8
April 2015	81.9	4.9	6.4
May 2015	85.7	2.8	3.4
June 2015	87.2	4.6	5.5



Average Daily Sales & Use Tax Collections



*Reported values exclude amounts collected under state tax amnesty programs.

Statewide Taxable Sales & Use by Industry

	Food Services & Drinking Places (722)				Motor Vehicle & Parts Dealers (441)				Miscellaneous Retail & Non-Retail Stores (442, 443, 447, 451, 453, 454)				General Merchandise Stores (452)			
	Year/Year Change		Share of Total		Year/Year Change		Share of Total		Year/Year Change		Share of Total		Year/Year Change		Share of Total	
	(millions)	%	%	Rank	(millions)	%	%	Rank	(millions)	%	%	Rank	(millions)	%	%	Rank
June 2014	\$46.9	5.3	22.3	1	\$19.3	4.4	11.0	3	\$152.0	38.6	13.1	2	(\$126.6)	(34.7)	5.8	6
July 2014	55.3	6.6	22.1	1	4.3	0.9	12.0	2	102.6	27.8	11.8	3	10.4	3.2	8.4	5
August 2014	77.4	8.9	23.2	1	53.7	11.3	12.9	2	49.5	13.8	10.0	3	7.2	2.1	8.8	4
September 2014	(124.0)	(12.1)	21.2	1	49.3	12.0	10.9	3	127.7	32.9	12.2	2	(2.2)	(0.6)	8.4	5
October 2014	64.2	7.5	22.6	1	37.5	9.0	11.1	2	66.6	18.0	10.7	3	11.6	3.4	8.6	5
November 2014	35.2	4.4	21.2	1	28.6	7.0	10.9	3	60.9	14.7	12.0	2	15.2	3.7	10.7	4
December 2014	54.5	7.0	17.1	1	38.6	8.9	9.7	4	131.7	23.5	14.2	2	4.4	0.8	11.4	3
January 2015	78.6	9.3	24.1	1	57.4	14.4	12.0	2	31.1	8.1	10.9	3	17.8	6.1	8.1	5
February 2015	32.8	4.0	22.3	1	48.0	11.3	12.3	2	46.1	12.4	10.9	3	21.9	6.6	9.3	4
March 2015	(6.3)	(0.6)	21.9	1	50.9	10.3	12.0	2	(25.5)	(4.9)	11.0	3	10.4	2.4	9.5	4
April 2015	117.9	13.9	23.4	1	46.6	10.4	12.0	2	11.8	2.8	10.5	3	(3.2)	(1.0)	8.2	5
May 2015	72.3	7.3	24.4	1	9.4	1.8	12.0	2	44.4	10.7	10.6	3	(118.3)	(25.2)	8.1	6
June 2015	46.7	5.0	21.9	1	72.7	15.9	11.9	2	(88.1)	(16.1)	10.3	3	129.7	54.4	8.3	5

	Wholesale Trade (423-425)				Clothing & Clothing Accessories Stores (448)				Information, Financial, Insurance, Real Estate, Renting & Leasing* (511-533)				Manufacturing (311-339)			
	Year/Year Change		Share of Total		Year/Year Change		Share of Total		Year/Year Change		Share of Total		Year/Year Change		Share of Total	
	(millions)	%	%	Rank	(millions)	%	%	Rank	(millions)	%	%	Rank	(millions)	%	%	Rank
June 2014	\$46.7	14.0	9.2	4	\$14.0	4.5	7.9	5	(\$0.9)	(0.4)	5.2	9	\$3.0	1.3	5.6	7
July 2014	20.4	5.8	9.2	4	13.1	4.6	7.5	6	22.4	11.7	5.3	7	(50.5)	(20.0)	5.0	8
August 2014	22.6	6.7	8.8	5	24.9	7.9	8.3	6	12.2	6.1	5.2	7	(23.5)	(11.2)	4.6	8
September 2014	60.7	18.7	9.1	4	(2.5)	(0.7)	7.9	6	29.6	14.4	5.6	7	(31.8)	(12.6)	5.2	8
October 2014	8.7	2.5	8.8	4	(1.3)	(0.4)	7.5	6	15.1	7.0	5.6	7	(61.1)	(22.2)	5.2	8
November 2014	26.9	9.1	8.1	6	10.6	3.1	8.8	5	(0.0)	(0.0)	4.9	7	1.1	0.6	4.8	8
December 2014	29.2	8.1	8.0	6	10.6	2.4	9.3	5	43.5	19.8	5.4	9	43.6	18.7	5.7	7
January 2015	15.8	5.3	8.3	4	10.6	4.0	7.2	6	37.1	19.0	6.1	7	13.3	7.6	4.9	8
February 2015	29.0	9.7	8.6	5	2.9	1.0	7.6	6	7.2	3.4	5.6	7	15.1	9.0	4.8	8
March 2015	71.2	20.6	9.2	5	11.4	3.6	7.2	6	7.1	3.1	5.1	7	14.9	7.0	5.0	8
April 2015	29.6	8.6	9.1	4	(19.7)	(6.1)	7.4	6	4.3	2.0	5.5	7	7.8	3.9	5.0	8
May 2015	3.5	1.0	8.3	4	24.6	7.5	8.1	5	8.2	3.8	5.2	7	13.1	6.4	5.0	8
June 2015	19.4	5.1	9.0	4	4.0	1.2	7.5	6	42.3	19.7	5.8	7	10.8	4.6	5.5	8

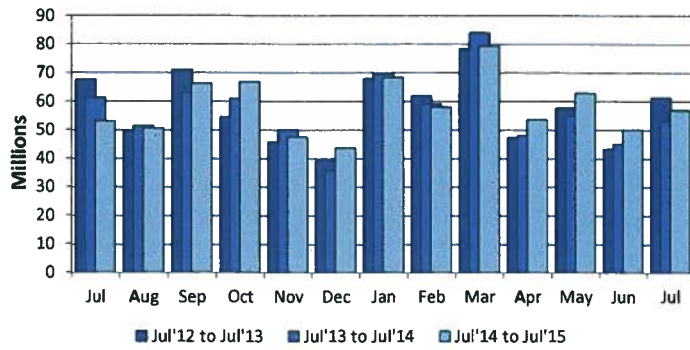
	Building Material & Garden Equipment & Supplies (444)				Food & Beverage Stores (445)				Construction (236-238)				Health & Personal Care Stores (446)			
	Year/Year Change		Share of Total		Year/Year Change		Share of Total		Year/Year Change		Share of Total		Year/Year Change		Share of Total	
	(millions)	%	%	Rank	(millions)	%	%	Rank	(millions)	%	%	Rank	(millions)	%	%	Rank
June 2014	\$8.1	4.8	4.2	9	\$0.9	0.7	3.3	10	(\$28.1)	(22.6)	2.3	11	\$4.7	6.4	1.9	12
July 2014	10.8	6.7	4.3	9	5.4	4.1	3.4	10	0.3	0.4	2.5	11	4.6	7.0	1.7	12
August 2014	9.2	6.4	3.7	9	25.9	22.8	3.4	10	14.1	13.7	2.9	11	6.5	9.8	1.8	12
September 2014	11.1	7.4	3.8	9	(8.4)	(5.8)	3.2	10	0.7	0.6	2.6	11	4.1	5.6	1.8	12
October 2014	13.5	8.7	4.1	9	4.4	3.5	3.2	10	(10.9)	(10.5)	2.3	11	4.9	7.2	1.8	12
November 2014	12.6	9.0	3.8	9	4.3	3.3	3.4	10	(4.5)	(5.5)	2.0	11	(1.9)	(2.8)	1.7	12
December 2014	16.9	12.4	3.1	10	6.1	3.3	3.9	9	17.3	16.9	2.5	11	5.7	6.2	2.0	12
January 2015	12.8	9.7	3.8	9	4.8	3.9	3.3	10	1.3	1.6	2.2	11	3.5	5.1	1.9	12
February 2015	19.1	14.5	3.9	9	11.7	9.6	3.5	10	55.7	229.6	2.1	11	4.3	6.1	1.9	12
March 2015	25.7	15.5	4.2	9	9.3	7.0	3.1	10	2.5	3.0	1.9	11	2.3	2.8	1.9	12
April 2015	15.3	8.4	4.8	9	6.5	5.0	3.3	10	2.4	3.0	2.0	11	3.0	4.0	1.9	12
May 2015	6.6	3.8	4.2	9	4.8	3.4	3.4	10	4.2	5.0	2.1	11	3.0	4.0	1.8	12
June 2015	24.7	14.1	4.5	10	9.1	6.7	3.3	11	11.8	12.3	2.4	12	4.9	6.2	1.9	13

	Natural Resources & Utilities* (111-221)				Arts, Entertainment, Recreation & Accommodation (710-721)				Transportation & Warehousing (481-493)				Other Services**, Public Administration & Miscellaneous* (541-624, 811-999)			
	Year/Year Change		Share of Total		Year/Year Change		Share of Total		Year/Year Change		Share of Total		Year/Year Change		Share of Total	
	(millions)	%	%	Rank	(millions)	%	%	Rank	(millions)	%	%	Rank	(millions)	%	%	Rank
June 2014	(\$2.9)	(5.4)	1.2	13	\$7.9	25.5	0.9	14	\$13.2	72.4	0.8	15	\$29.2	15.4	5.3	8
July 2014	2.7	5.6	1.3	13	12.9	58.9	0.9	14	0.9	6.0	0.4	15	23.0	15.7	4.2	10
August 2014	(21.8)	(36.5)	0.9	13	6.1	21.3	0.8	14	8.3	58.0	0.6	16	12.3	7.8	4.2	9
September 2014	(9.4)	(14.3)	1.3	13	8.9	27.9	1.0	14	(1.5)	(8.0)	0.4	15	48.6	27.7	5.3	8
October 2014	21.0	44.8	1.7	13	13.2	37.6	1.2	14	10.2	61.2	0.7	15	(8.5)	(4.1)	4.9	9
November 2014	(18.8)	(25.6)	1.4	13	6.0	18.2	1.0	14	8.3	51.6	0.6	15	69.8	62.8	4.6	9
December 2014	1.5	3.5	0.9	13	4.5	12.6	0.8	14	4.5	23.3	0.5	15	38.4	17.0	5.4	8
January 2015	(16.9)	(32.3)	0.9	14	3.1	8.2	1.1	13	3.6	24.2	0.5	15	18.7	11.7	4.7	9
February 2015	7.1	17.9	1.2	13	4.3	13.6	0.9	14	0.7	3.9	0.5	15	12.8	7.8	4.6	9
March 2015	(46.4)	(49.2)	1.1	14	26.7	63.4	1.5	13	0.2	1.1	0.4	15	(37.0)	(14.5)	4.8	9
April 2015	8.9	19.1	1.3	13	0.1	0.3	0.9	14	(4.3)	(18.5)	0.5	15	(13.0)	(6.8)	4.3	10
May 2015	14.2	37.1	1.2	13	5.6	14.2	1.0	14	5.0	36.9	0.4	15	(10.4)	(5.3)	4.3	9
June 2015	22.0	44.3	1.6	14	4.8	12.3	1.0	15	(13.1)	(41.9)	0.4	16	(6.1)	(2.8)	4.8	9

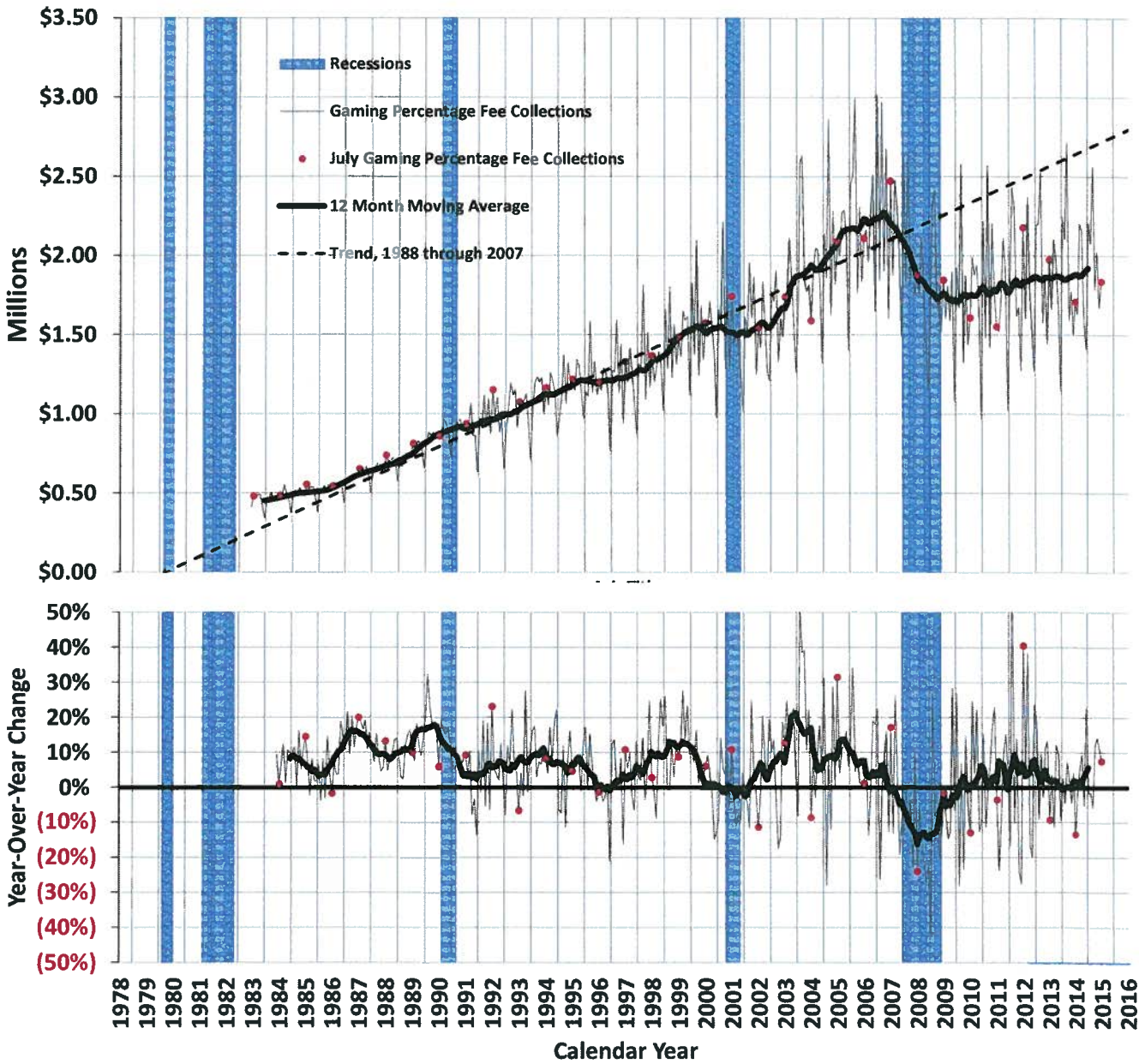
* Statistically significant outliers in most recent month's data
 ** Other Services includes Professional, Management, Administration, Education and Health Services.

Gaming Percentage Fees Collections

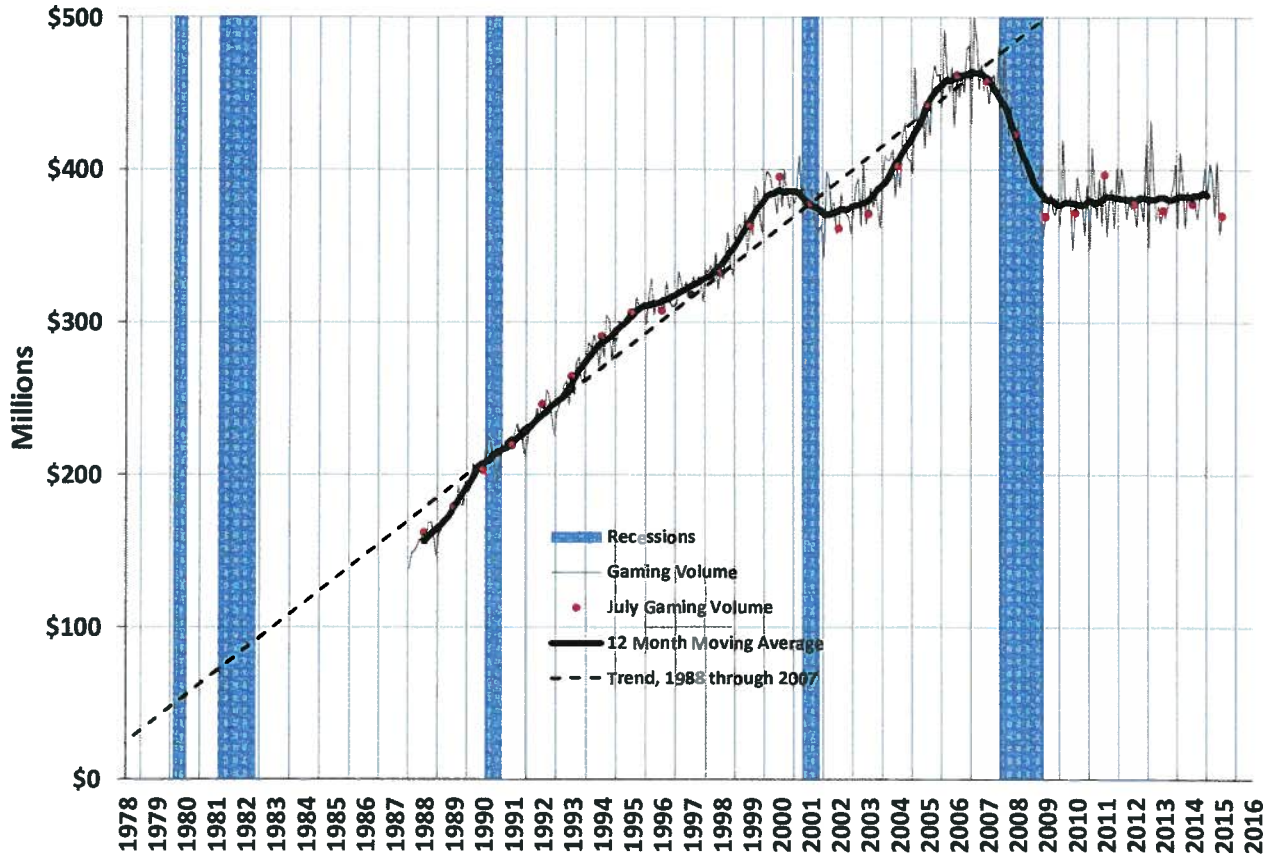
	Total	Year/Year Change	
	(millions)	(millions)	%
July 2014	\$53.0	(\$8.2)	(13.5)
August 2014	50.5	(0.9)	(1.7)
September 2014	66.2	3.2	5.0
October 2014	66.8	5.8	9.5
November 2014	47.4	(2.6)	(5.1)
December 2014	43.7	8.1	22.7
January 2015	68.4	(1.2)	(1.7)
February 2015	58.0	(1.0)	(1.6)
March 2015	79.4	(4.8)	(5.7)
April 2015	53.5	5.6	11.7
May 2015	62.8	7.8	14.3
June 2015	50.1	5.0	11.2
July 2015	56.9	4.0	7.5



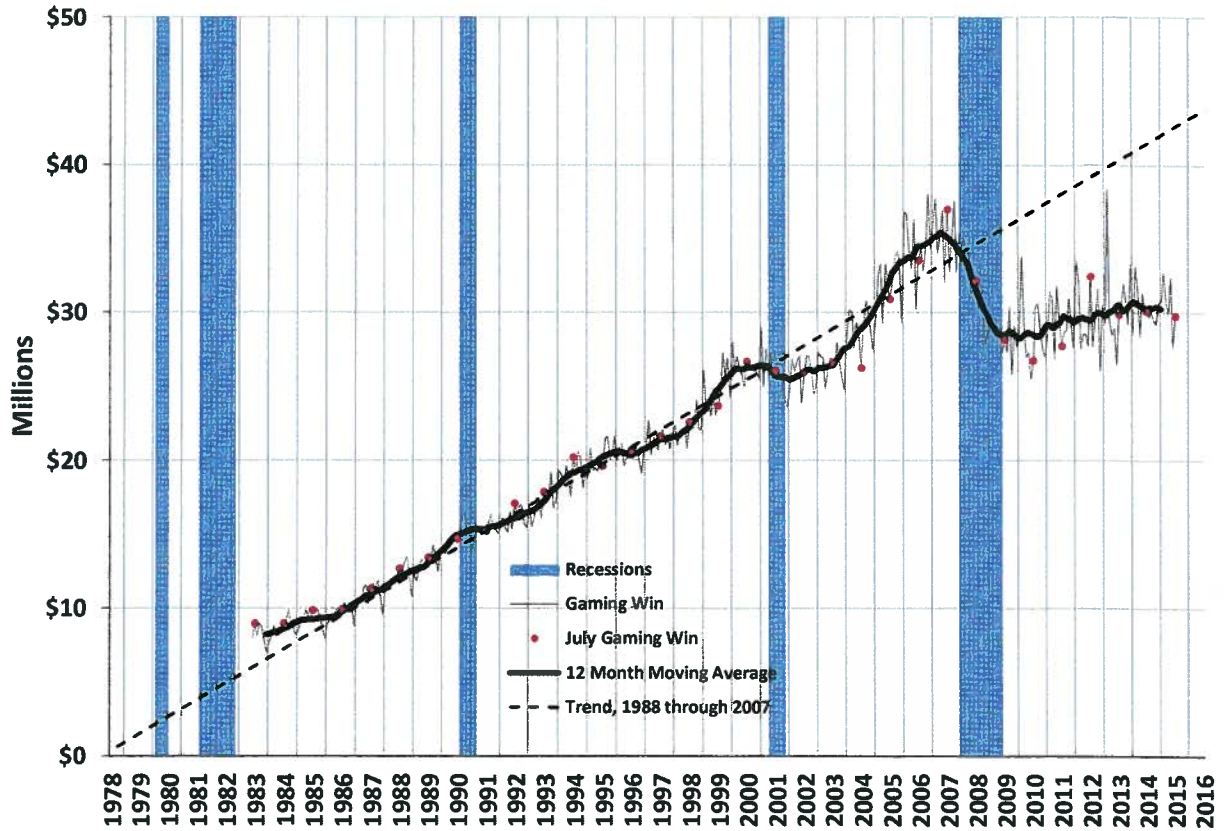
Average Daily Gaming Percentage Fee Collections



Average Daily Gaming Volume

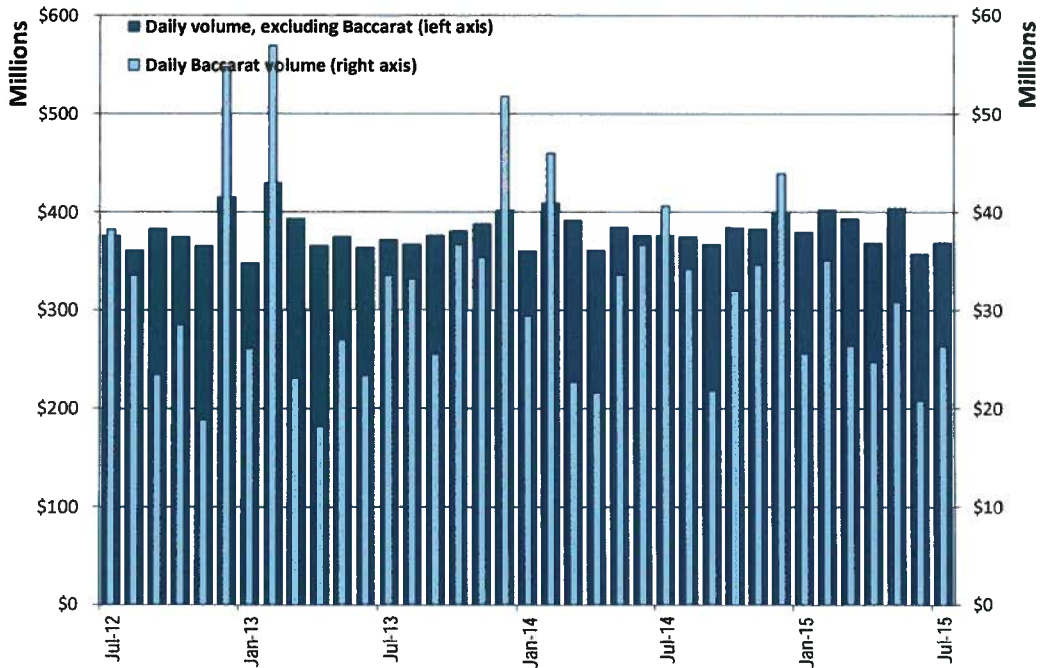


Average Daily Gaming Win

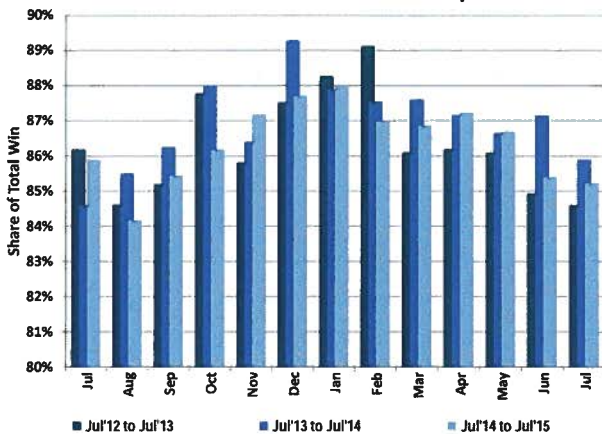


Statewide Gaming Activity														
Date	Slots			Games Excluding Baccarat				Baccarat			Tables	Total Win	Taxable Gross Revenue	Pct. Fee due after EFA
	Coin-in		Win	Volume		Win	Volume		Win					
	Yr/Yr	Pct. Chg.	Yr/Yr	Pct. Chg.	Yr/Yr	Pct. Chg.	Yr/Yr	Pct. Chg.	Yr/Yr	Pct. Chg.				
Jul-13	(1.1)	(1.0)	6.5	(1.8)	(12.2)	(37.4)	3.3	(8.0)	(2.6)	(11.1)				
Aug-13	0.2	(2.7)	12.1	22.3	(1.3)	55.6	5.0	11.2	(1.0)	(0.2)				
Sep-13	(4.8)	3.8	8.1	2.5	8.9	49.9	0.5	7.4	(0.9)	(8.8)				
Oct-13	(1.3)	(6.3)	3.0	(4.0)	28.7	16.7	9.4	(2.6)	4.6	12.1				
Nov-13	0.5	(6.8)	7.8	41.8	88.2	81.4	8.3	11.9	(2.5)	1.2				
Dec-13	(3.0)	13.3	(2.5)	(11.2)	(5.4)	28.2	(1.6)	9.6	0.2	1.1				
Jan-14	3.4	(5.0)	0.4	9.8	12.9	(16.5)	7.3	(2.8)	3.9	0.2				
Feb-14	(1.7)	(0.6)	(7.7)	(15.0)	(19.2)	(40.0)	0.1	(13.7)	(2.1)	(3.8)				
Mar-14	(1.5)	3.8	4.7	8.4	(1.2)	36.1	0.5	7.6	4.7	7.6				
Apr-14	(2.7)	(4.7)	(0.8)	0.1	19.4	39.1	2.6	(0.3)	(1.9)	(7.8)				
May-14	0.2	(4.3)	4.9	9.0	24.8	85.5	(0.0)	8.2	(3.8)	(5.5)				
Jun-14	(1.2)	7.7	3.9	(3.2)	57.0	155.0	(4.7)	14.3	0.3	(6.2)				
Jul-14	(0.0)	(2.9)	(4.7)	3.5	21.1	13.9	(8.0)	0.7	(5.8)	(9.4)				
Aug-14	1.9	(0.8)	2.8	(2.7)	3.2	(12.4)	(4.6)	(3.7)	2.5	10.0				
Sep-14	(0.4)	0.1	(6.4)	(9.2)	(14.5)	(29.1)	(8.1)	(6.0)	4.5	7.5				
Oct-14	3.5	0.7	(2.5)	2.8	(13.0)	(33.1)	(9.3)	(4.3)	2.1	9.5				
Nov-14	(1.3)	5.9	(0.7)	(11.1)	(2.2)	(1.4)	(6.9)	0.0	4.9	(0.4)				
Dec-14	1.1	0.3	3.8	3.8	(15.2)	(38.2)	(4.4)	(8.1)	10.3	31.3				
Jan-15	4.7	(1.1)	16.8	8.2	(13.0)	69.1	(3.4)	7.7	(4.7)	(9.8)				
Feb-15	1.5	4.9	(1.1)	0.9	(23.7)	(23.6)	(8.0)	(1.1)	1.2	1.0				
Mar-15	(0.1)	3.5	(2.4)	(7.1)	16.3	(33.1)	(6.6)	(3.1)	2.6	(3.1)				
Apr-15	1.3	6.1	0.5	3.5	14.4	5.6	(3.2)	5.4	6.0	23.3				
May-15	3.5	8.0	20.3	21.8	(8.2)	(36.4)	0.6	3.3	7.8	14.4				
Jun-15	(0.7)	(1.0)	(2.3)	1.9	(43.3)	(56.0)	4.5	(8.4)	9.0	20.4				
Jul-15	2.5	5.5	(1.1)	(4.3)	(35.2)	(23.1)	0.6	(1.0)	4.9	4.0				

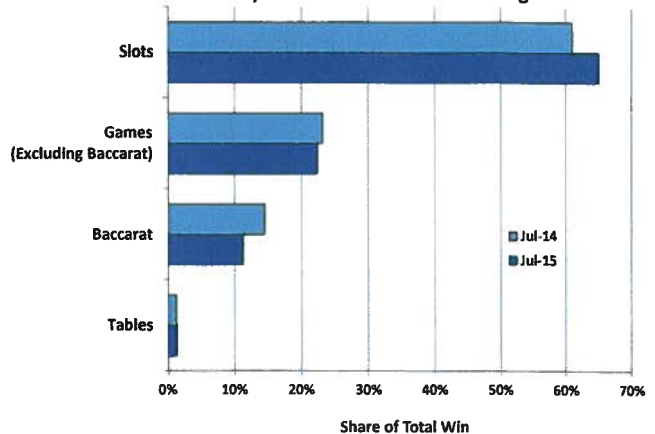
Statewide Average Daily Gaming Volume



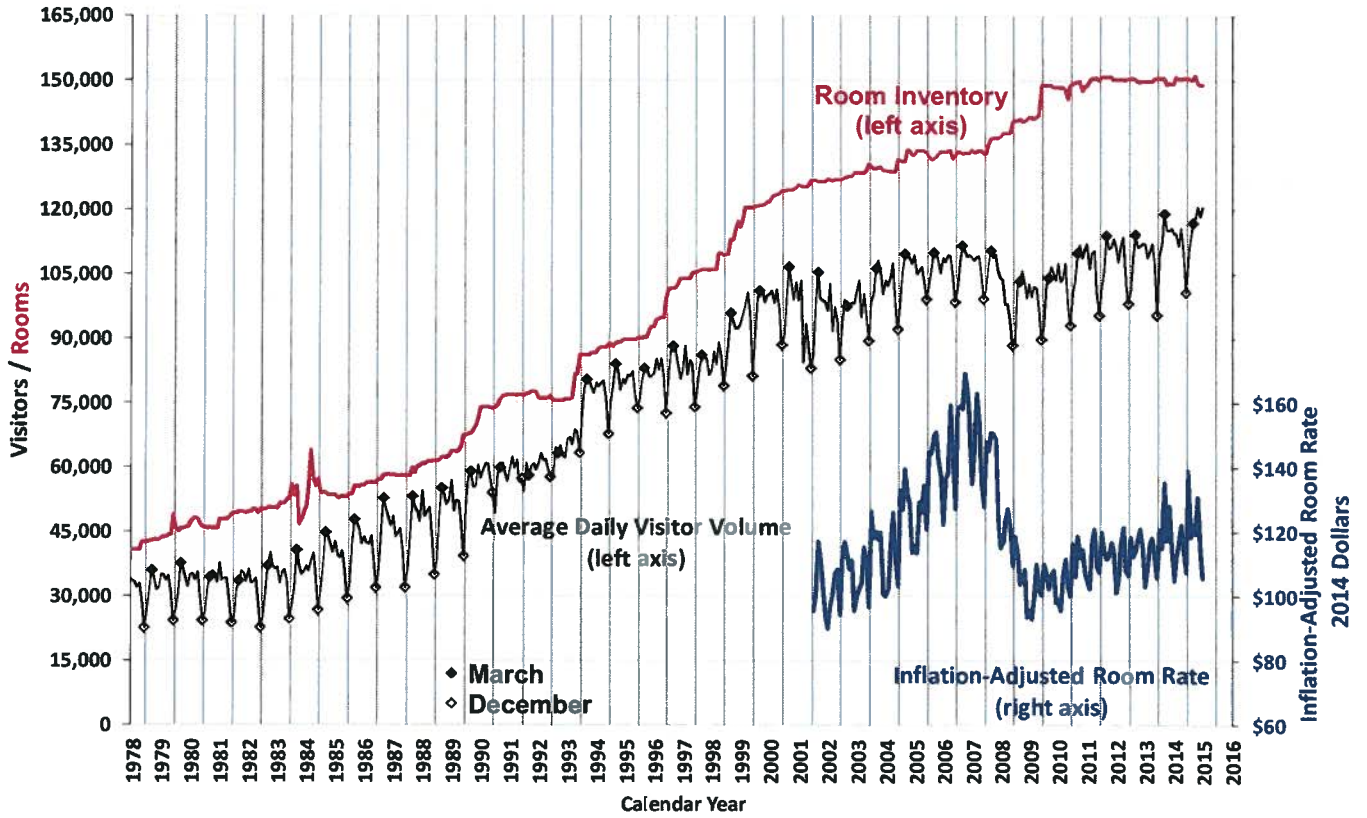
Share of Statewide Win from Clark County



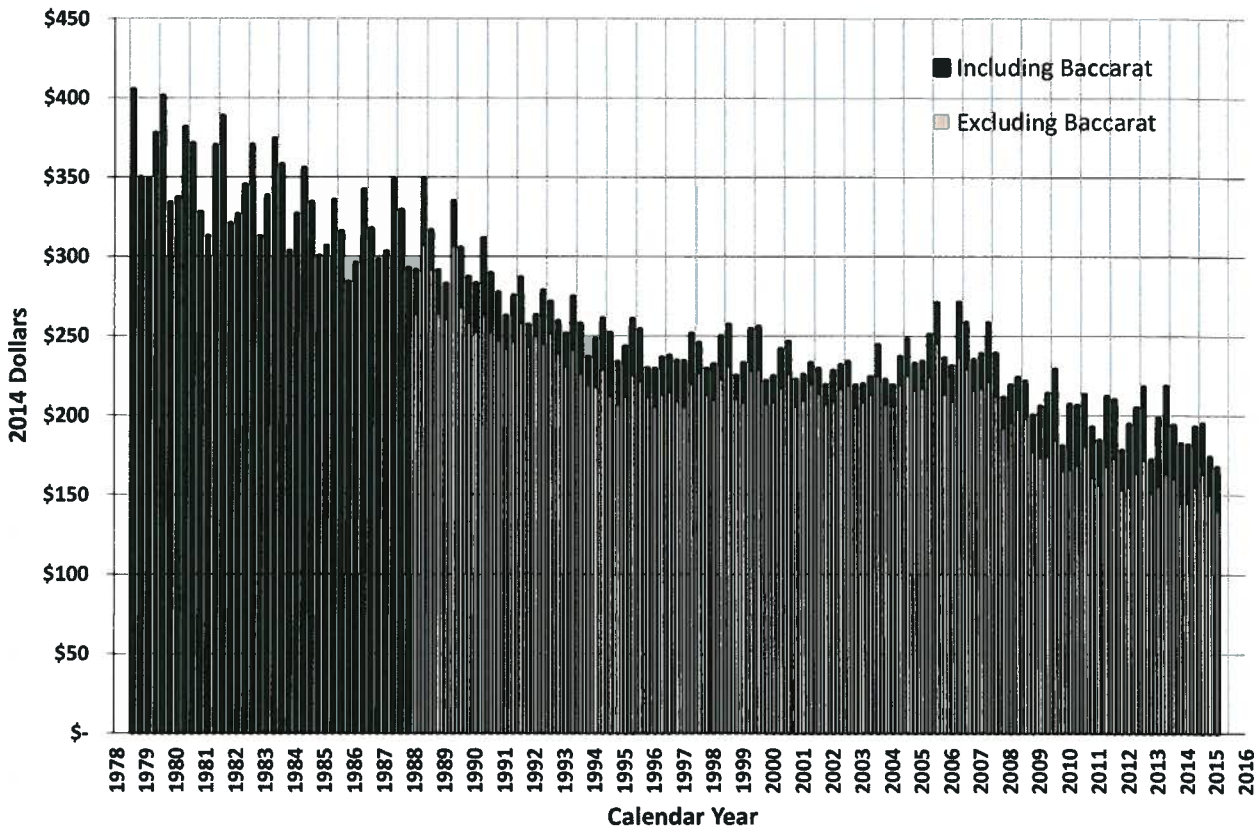
Components of Statewide Gaming Win



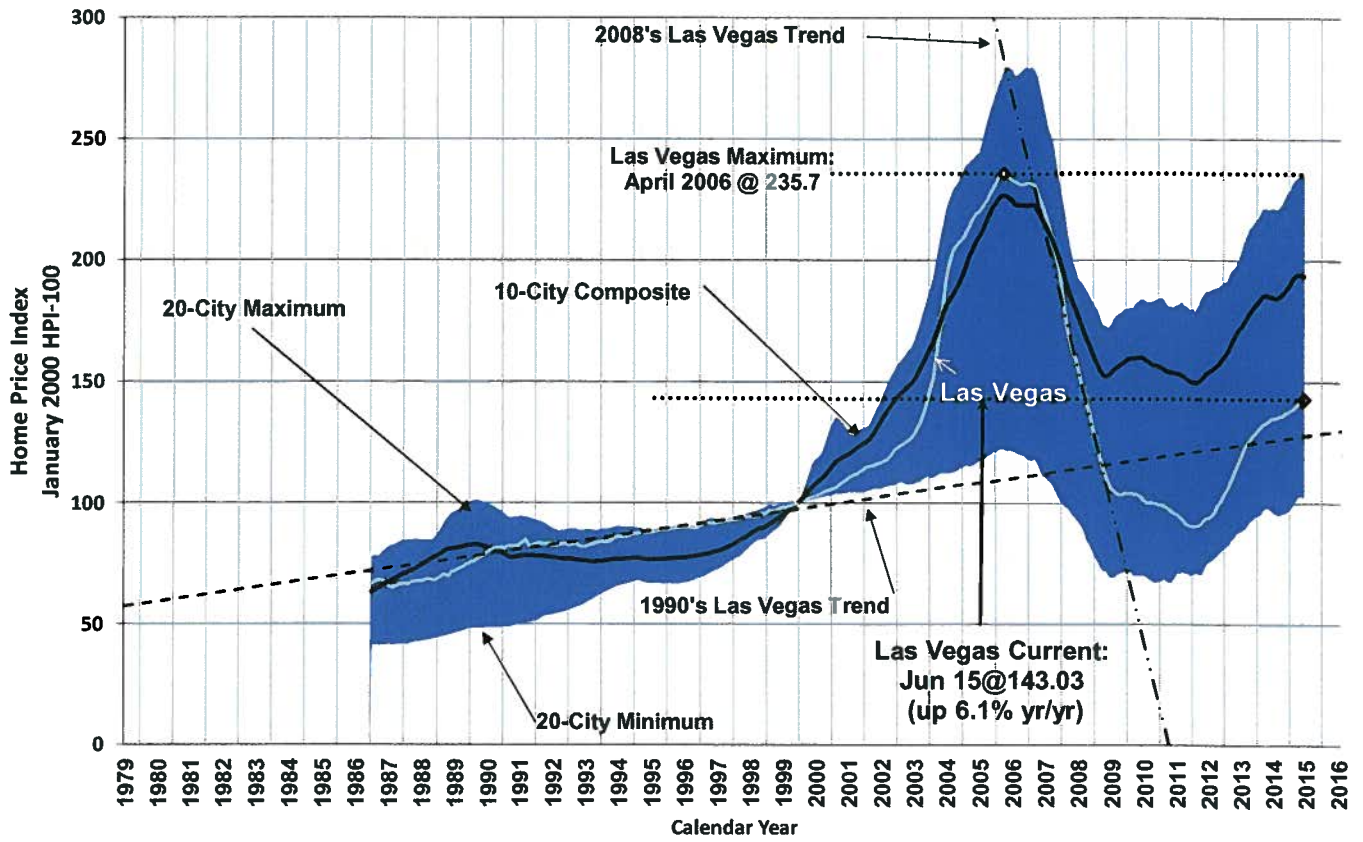
Las Vegas Visitors vs. Rooms



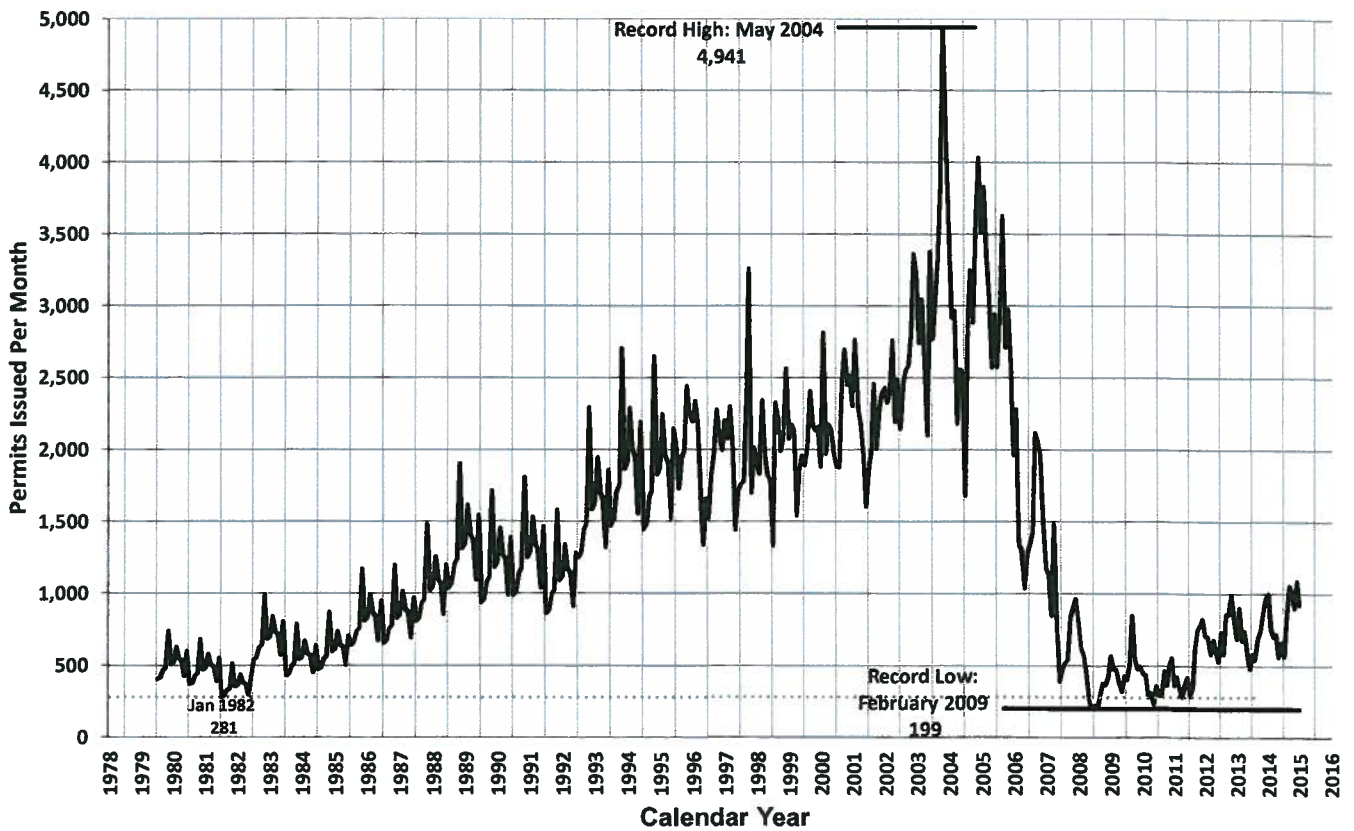
Average Las Vegas Gaming Win per Visitor (Inflation-Adjusted)



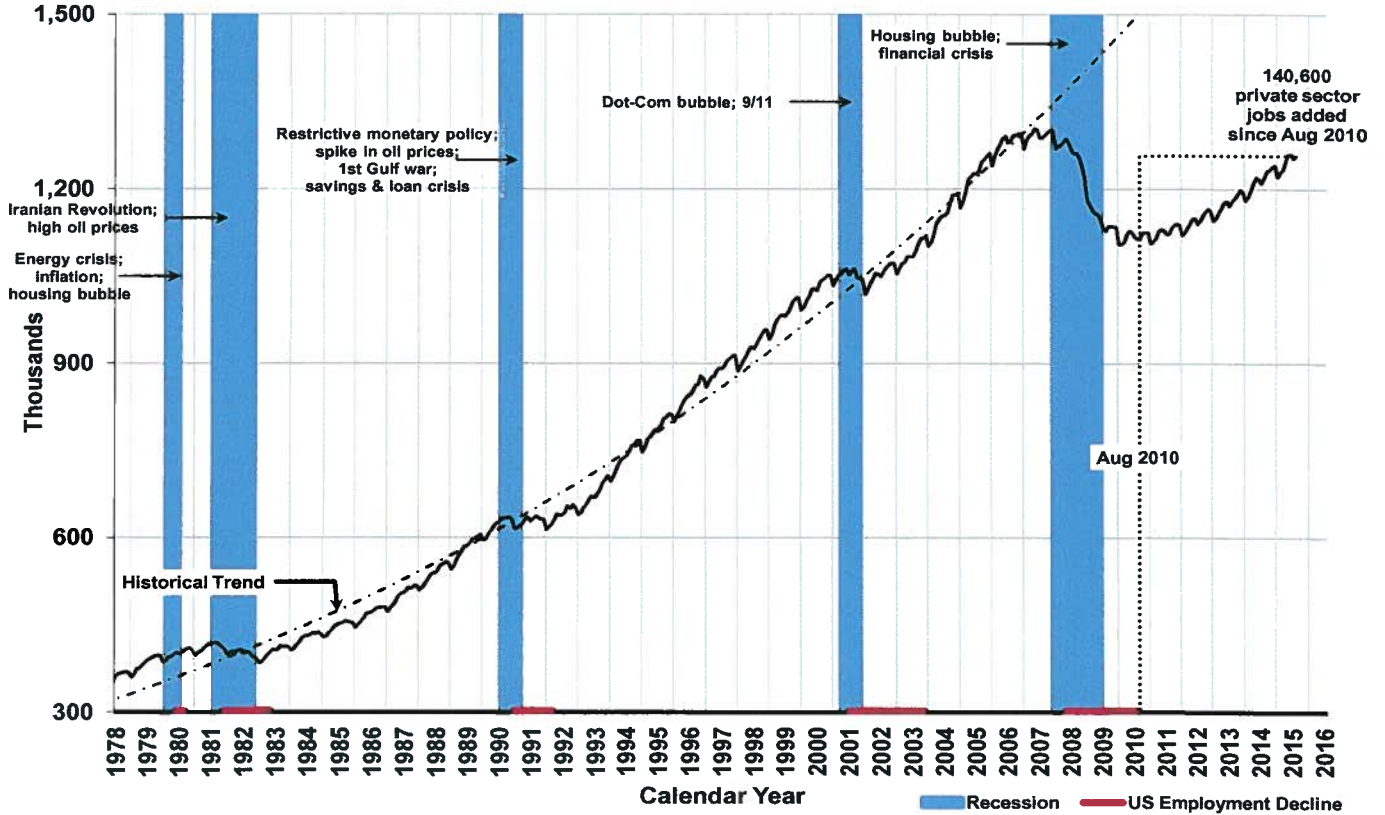
Case-Shiller Seasonally Adjusted Home Price Index



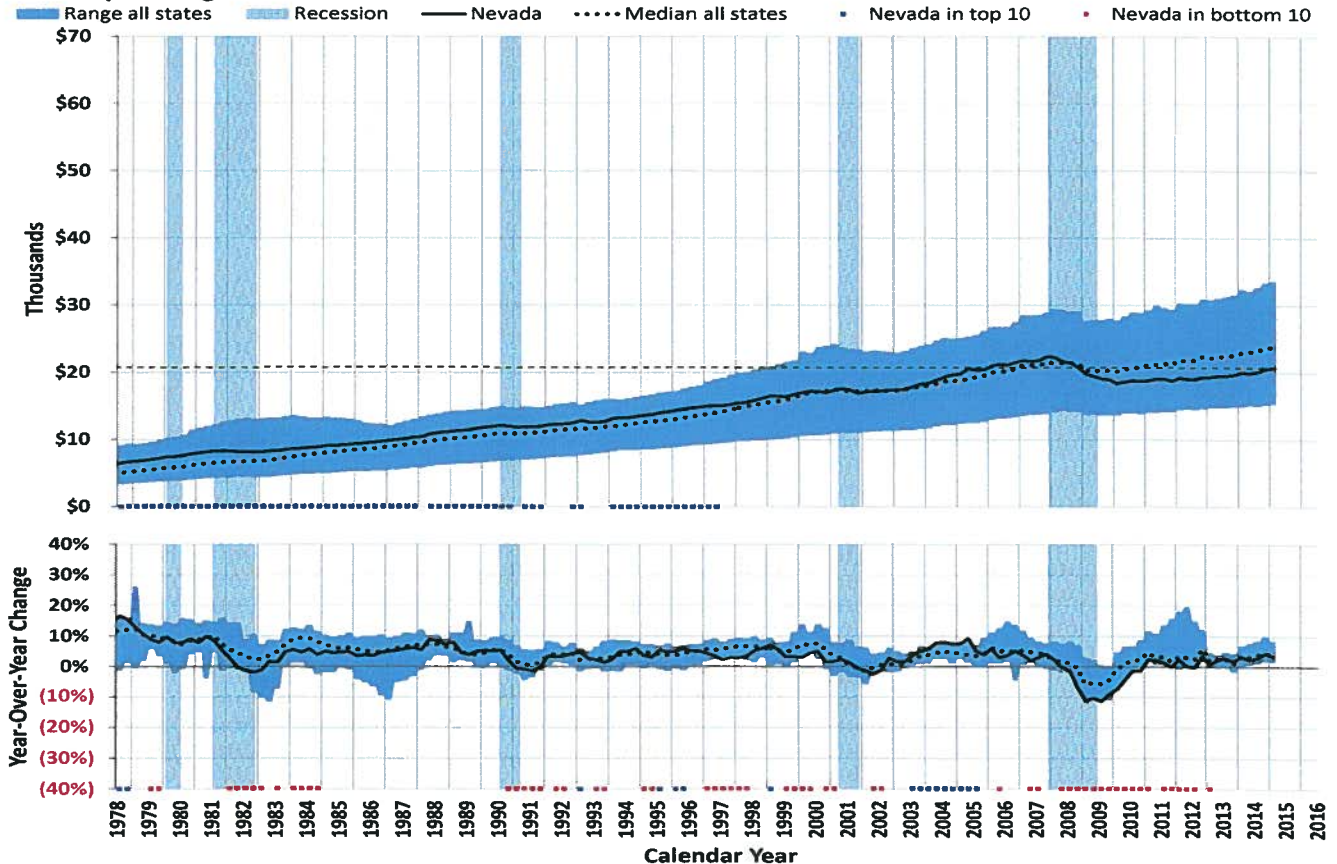
Nevada Single Family Home Permits Issued Each Month



Nevada Total Non-Farm Private & Public Sector Jobs



Per Capita Wages & Salaries



Statewide Employment by Sector

	Leisure & Hospitality				Trade, Transportation & Utilities				Professional Services				Education & Healthcare			
	Yr/Yr Change		Share of Total		Yr/Yr Change		Share of Total		Yr/Yr Change		Share of Total		Yr/Yr Change		Share of Total	
	(thou.)	%	%	Rank	(thou.)	%	%	Rank	(thou.)	%	%	Rank	(thou.)	%	%	Rank
August 2014	14.6	4.4	28.1	1	8.2	3.7	18.9	2	5.7	3.8	12.8	3	5.0	4.5	9.6	4
September 2014	14.1	4.3	27.8	1	8.7	3.9	18.8	2	7.6	5.1	12.7	3	4.8	4.3	9.5	4
October 2014	15.4	4.7	27.7	1	9.0	4.0	19.0	2	5.8	3.8	12.8	3	3.6	3.2	9.5	4
November 2014	14.8	4.6	27.4	1	6.7	2.9	19.3	2	7.9	5.2	13.0	3	4.4	3.9	9.5	4
December 2014	17.1	5.3	27.4	1	7.4	3.2	19.4	2	7.8	5.2	12.8	3	5.8	5.1	9.6	4
January 2015	16.6	5.2	27.8	1	8.8	3.9	19.1	2	4.8	3.1	12.9	3	5.4	4.8	9.7	4
February 2015	15.8	4.9	27.7	1	9.4	4.2	19.0	2	5.3	3.5	12.9	3	5.2	4.5	9.7	4
March 2015	12.9	3.9	27.9	1	7.2	3.2	18.8	2	4.3	2.8	12.8	3	4.0	3.5	9.6	4
April 2015	15.7	4.7	28.2	1	6.6	2.9	18.7	2	3.2	2.1	12.7	3	5.6	4.9	9.7	4
May 2015	16.4	4.8	28.2	1	6.4	2.8	18.6	2	3.7	2.4	12.6	3	6.6	5.7	9.7	4
June 2015	16.6	4.9	28.3	1	4.7	2.1	18.5	2	3.7	2.4	12.6	3	6.1	5.3	9.7	4
July 2015	17.2	5.1	28.5	1	3.4	1.5	18.6	2	6.3	4.1	12.7	3	6.5	5.6	9.8	4
August 2015	15.2	4.4	28.5	1	1.1	0.5	18.4	2	5.5	3.5	12.9	3	6.5	5.6	9.8	4

	Local Government				Construction				Financial Services				Manufacturing			
	Yr/Yr Change		Share of Total		Yr/Yr Change		Share of Total		Yr/Yr Change		Share of Total		Yr/Yr Change		Share of Total	
	(thou.)	%	%	Rank	(thou.)	%	%	Rank	(thou.)	%	%	Rank	(thou.)	%	%	Rank
August 2014	(0.4)	(0.4)	7.5	5	6.7	11.3	5.4	6	(0.4)	(2.1)	1.6	10	0.7	1.7	3.4	7
September 2014	0.9	0.9	7.9	5	6.7	11.2	5.4	6	(0.1)	(0.6)	1.6	10	0.6	1.5	3.4	7
October 2014	0.3	0.3	7.9	5	4.0	6.6	5.2	6	(2.7)	(13.4)	1.4	11	0.7	1.7	3.4	7
November 2014	(0.4)	(0.4)	7.9	5	4.6	7.7	5.2	6	(2.6)	(12.8)	1.4	11	0.8	1.9	3.4	7
December 2014	(1.0)	(1.0)	7.9	5	5.9	10.1	5.2	6	(2.4)	(12.1)	1.4	11	0.8	1.9	3.4	7
January 2015	(0.2)	(0.2)	8.0	5	4.5	7.7	5.1	6	2.4	13.6	1.7	10	0.2	0.5	3.4	7
February 2015	0.4	0.4	8.0	5	4.3	7.3	5.1	6	2.8	16.2	1.7	10	0.3	0.7	3.4	7
March 2015	0.0	0.0	8.0	5	4.2	7.1	5.2	6	3.1	17.6	1.7	10	0.4	1.0	3.4	7
April 2015	(0.1)	(0.1)	7.9	5	5.2	8.5	5.3	6	0.2	1.1	1.6	10	0.4	1.0	3.3	7
May 2015	0.7	0.7	7.9	5	5.2	8.3	5.4	6	0.1	0.6	1.6	10	0.4	1.0	3.3	7
June 2015	2.2	2.3	7.7	5	7.7	12.2	5.6	6	0.6	2.9	1.8	10	0.7	1.7	3.4	7
July 2015	0.7	0.8	7.3	5	6.7	10.3	5.7	6	0.6	2.9	1.6	10	0.8	1.9	3.4	7
August 2015	0.4	0.4	7.3	5	4.3	6.5	5.6	6	0.6	2.9	1.6	10	0.8	1.9	3.4	7

	Other Services				State Government				Federal Government				Information			
	Yr/Yr Change		Share of Total		Yr/Yr Change		Share of Total		Yr/Yr Change		Share of Total		Yr/Yr Change		Share of Total	
	(thou.)	%	%	Rank	(thou.)	%	%	Rank	(thou.)	%	%	Rank	(thou.)	%	%	Rank
August 2014	1.5	4.4	2.9	9	0.2	0.6	2.9	8	(0.3)	(1.6)	1.5	11	0.5	3.9	1.1	13
September 2014	1.7	5.0	2.9	9	2.0	5.5	3.1	8	(0.2)	(1.1)	1.5	11	0.6	4.7	1.1	13
October 2014	1.5	4.5	2.9	9	1.7	4.5	3.2	8	0.0	0.0	1.5	10	0.6	4.6	1.1	13
November 2014	0.9	2.7	2.8	9	1.1	2.9	3.2	8	0.2	1.1	1.5	10	0.4	3.0	1.1	13
December 2014	0.3	0.9	2.7	9	0.9	2.3	3.2	8	0.2	1.1	1.5	10	0.5	3.8	1.1	13
January 2015	0.6	1.8	2.8	9	(1.1)	(3.1)	2.9	8	0.2	1.1	1.5	11	0.7	5.5	1.1	13
February 2015	0.8	2.4	2.8	9	1.0	2.6	3.2	8	0.3	1.7	1.5	11	0.5	3.8	1.1	13
March 2015	0.8	2.4	2.8	9	0.9	2.3	3.2	8	0.2	1.1	1.4	11	0.8	6.3	1.1	13
April 2015	0.9	2.6	2.9	9	1.1	2.9	3.2	8	0.7	4.0	1.5	11	(0.4)	(2.9)	1.1	13
May 2015	1.0	2.8	2.9	9	0.2	0.5	3.1	8	0.6	3.4	1.5	11	(1.0)	(6.8)	1.1	12
June 2015	1.1	3.1	2.9	8	0.2	0.6	2.9	9	0.6	3.3	1.5	11	(1.3)	(8.4)	1.1	12
July 2015	1.0	2.8	2.9	8	0.2	0.6	2.8	9	0.6	3.3	1.5	11	0.2	1.5	1.1	13
August 2015	1.2	3.4	2.9	9	1.1	3.1	2.9	8	0.6	3.3	1.5	11	0.3	2.2	1.1	12

	Natural Resources				All Non-Farm Jobs			All Private Non-Farm Jobs			All Public Non-Farm Jobs		
	Yr/Yr Change		Share of Total		Total	Yr/Yr Change	Total	Yr/Yr Change	Total	Yr/Yr Change	Total	Yr/Yr Change	
	(thou.)	%	%	Rank	(thou.)	(thou.) %	(thou.)	(thou.) %	(thou.)	(thou.) %	(thou.)	(thou.) %	
August 2014	(1.0)	(6.4)	1.2	12	1,220.9	42.1 3.6	1,075.9	42.6 4.1	145.0	(0.5)	(0.3)		
September 2014	(0.6)	(4.0)	1.2	12	1,230.9	47.9 4.0	1,077.1	45.2 4.4	153.8	2.7	1.8		
October 2014	(0.4)	(2.7)	1.2	12	1,232.4	42.8 3.6	1,077.4	40.8 3.9	155.0	2.0	1.3		
November 2014	(0.4)	(2.7)	1.2	12	1,238.8	40.7 3.4	1,083.7	39.8 3.8	155.1	0.9	0.6		
December 2014	(0.5)	(3.4)	1.1	12	1,240.3	45.0 3.8	1,084.8	44.9 4.3	155.5	0.1	0.1		
January 2015	(0.4)	(2.8)	1.1	12	1,220.5	40.1 3.4	1,070.6	41.2 4.0	149.9	(1.1)	(0.7)		
February 2015	(0.3)	(2.1)	1.1	12	1,229.5	42.8 3.6	1,074.0	41.1 4.0	155.5	1.7	1.1		
March 2015	(0.5)	(3.5)	1.1	12	1,233.5	35.2 2.9	1,077.2	34.1 3.3	156.3	1.1	0.7		
April 2015	(0.6)	(4.2)	1.1	12	1,247.5	38.5 3.2	1,090.9	36.8 3.5	156.6	1.7	1.1		
May 2015	(0.7)	(4.9)	1.1	13	1,259.2	39.5 3.2	1,102.1	38.0 3.6	157.1	1.5	1.0		
June 2015	(0.8)	(5.5)	1.1	13	1,259.6	42.7 3.5	1,107.8	39.7 3.7	151.8	3.0	2.0		
July 2015	(0.9)	(6.2)	1.1	12	1,252.9	43.1 3.6	1,107.1	41.6 3.9	145.8	1.5	1.0		
August 2015	(1.1)	(7.5)	1.1	13	1,257.0	36.1 3.0	1,109.9	34.0 3.2	147.1	2.1	1.4		

Per Capita Personal Income

