



		US Rate	Nevada Rate	Rank 1 = best
Foreclosure Filings Rate	Jul '15	0.09%	0.17%	47
Home Price Index (FHFA)*	2015q2 v 2014q2	5.4%	10.4%	2
	2015q2 v 2010q2	16.6%	42.1%	1
Wage & Salary Disbursements	2015q1 v 2014q1	4.8%	4.3%	27
Personal Income	2015q1 v 2014q1	4.4%	4.5%	19
Employment*	Jul '15 v Jul '14	2.1%	3.6%	2
Unemployment**	Jul '15	5.3%	6.8%	49

*Not seasonally adjusted.
**Seasonally adjusted.

It is remarkable how often the first interpretations of new evidence have confirmed the preconceptions of its discoverer.
— John Reader

State General Fund Revenues Historical Collections and Year-to-Date FY 2015 Collections compared to Year-to-Date FY 2014

General Fund Revenue Sources	FY 2012 Actual			FY 2013 Actual			FY 2014 Actual			FY 2015 Actual Year-to-Date		
	Total millions	Yr/Yr Change millions	%	Total millions	Yr/Yr Change millions	%	Total millions	Yr/Yr Change millions	%	Total millions	Yr/Yr Change millions	%
Sales Tax	\$842.9	\$47.4	6.0	\$888.7	\$45.7	5.4	\$931.3	\$42.7	4.8	\$994.7	\$63.4	6.8
Gaming Percentage Fees Collections [1]	653.7	1.5	0.2	678.9	25.2	3.9	682.3	3.5	0.5	693.2	10.9	1.6
Modified Business Tax - Financial & NonFinancial [2, 3]	369.7	(12.2)	(3.2)	386.6	16.9	4.6	384.9	(1.7)	(0.4)	410.4	25.5	6.6
Insurance Premium Tax [2]	236.8	2.0	0.8	248.5	11.7	5.0	263.5	15.0	6.0	283.7	20.1	7.6
Live Entertainment Tax - Gaming	125.3	6.8	5.7	125.7	0.4	0.3	139.2	13.4	10.7	130.9	(8.3)	(6.0)
Cigarette Tax [4]	83.0	(3.0)	(3.5)	83.0	0.0	0.1	79.6	(3.4)	(4.1)	92.8	13.1	16.5
Commercial Recordings	66.7	(6.9)	(9.3)	65.1	(1.6)	(2.4)	66.7	1.6	2.5	68.8	2.2	3.3
Real Property Transfer Tax [2]	48.4	(3.2)	(6.2)	55.0	6.6	13.7	60.0	5.1	9.2	64.2	4.2	6.9
Liquor Tax	40.6	1.2	3.0	39.9	(0.8)	(1.9)	41.8	2.0	4.9	42.7	0.9	2.1
Governmental Services Tax-Depreciation [5]	62.4	0.8	1.3	63.5	1.1	1.8	62.3	(1.2)	(1.9)	62.9	0.6	1.0
Governmental Services Tax-Commissions & Penalties [6]	24.7	24.7	n/a	25.1	0.4	1.8	0.0	(25.1)	(100.0)	28.8	28.8	n/a
Business License Fee [7]	64.8	10.3	19.0	69.0	4.2	6.5	72.2	3.2	4.6	75.4	3.2	4.4
State Share Various Local SUT	24.3	1.4	6.0	25.7	1.4	5.8	27.2	1.4	5.6	29.0	1.8	6.8
State Share LSST [8]	8.3	0.6	7.5	8.8	0.5	5.8	9.2	0.4	4.6	9.7	0.5	5.8
Live Entertainment Tax - NonGaming	11.6	(0.5)	(3.8)	11.7	0.1	0.5	15.0	3.3	28.0	15.0	(0.0)	(0.1)
Quarterly Slots [2, 9]	21.1	0.4	2.0	20.7	(0.4)	(2.0)	19.7	(1.0)	(4.9)	19.5	(0.2)	(1.2)
Other General Fund Revenues [10]	160.5	(70.3)	(30.5)	173.3	12.8	8.0	168.4	(4.9)	(2.8)	176.4	8.0	4.7
Net Proceeds of Minerals [11]	120.4	8.9	8.0	111.3	(9.1)	(7.6)	26.2	(85.1)	(76.4)	51.7	25.5	97.3
Unclaimed Property [12]	97.4	13.6	16.2	32.9	(64.5)	(66.2)	17.5	(15.5)	(46.9)	24.3	6.8	39.1
Year-End Transfers	19.1	(4.5)	(19.1)	19.2	0.1	0.6	0.0	(19.2)	(100.0)	n/a	n/a	n/a
Totals	\$3,081.8	(\$93.7)	(2.9)	\$3,132.6	\$50.8	1.6	\$3,066.9	(\$65.7)	(2.1)	\$3,273.9	\$207.0	6.7
Lodging Tax [13]	\$126.4	\$13.9	12.3	\$128.7	\$2.3	1.8	\$141.1	\$12.4	9.6	\$150.5	\$9.4	6.6

[1] Gaming Percentage Fees are reported in the month following the month of actual gaming activity.

[2] Amounts are reported quarterly.

[3] The rate of the Modified Business Tax for non-financial institutions was changed in FY 2010, FY 2012 and again in FY 2014, which accounts for most of the year-over-year change in revenues in those years. In FY 2010 and FY 2011, the rate was 0.5% on taxable wages up to \$62,500 per quarter and 1.17% on taxable wages above \$62,500. In FY 2012 and FY 2013, taxable wages up to \$62,500 per quarter were not taxed, while those above \$62,500 were taxed at 1.17%. In FY 2014 and FY 2015, taxable wages up to \$85,000 per quarter were not taxed, while those above \$85,000 were taxed at 1.17%. Starting in FY 2016, the rate is permanently increased to 1.475% on taxable wages that exceed \$50,000 per quarter.

[4] The State imposes a tax of 80 cents per package of 20 cigarettes, 70 cents of which is retained by the State. The 2009 Legislature permanently lowered the collection allowance provided to a taxpayer for collecting and remitting cigarette taxes from 0.5% to 0.25%, effective July 1, 2009. The excise tax on cigarettes increases to \$1.80 beginning on July 1, 2015, of which \$1.70 is deposited into the State General Fund.

[5] Governmental Services Tax proceeds from the 10% depreciation schedule change are transferred to the General Fund in FY 2012, FY 2013, FY 2015, and FY 2016. In FY 2017, 50 percent of the proceeds are deposited in the General Fund and 50 percent will be deposited in the State Highway Fund. They are scheduled to be fully retained by the Department of Motor Vehicles in FY 2018 and beyond.

[6] Governmental Services Tax proceeds from the commissions and penalties are transferred to the General Fund in FY 2015 only. The amount transferred cannot exceed \$23,724,000 in commissions and \$5,037,000 in penalties.

[7] Business License Fees for initial application and annual renewal were increased to \$200 from \$100 beginning in FY 2010. In FY 2016, these fees increase to \$500 for corporations, but stay at \$200 for all other businesses.

[8] The rate of the Local School Support Tax was increased in FY 2010 through FY 2015 to 2.60% from 2.25% previously. Effective July 1, 2015, the 2.60% rate is made permanent.

[9] In FY 2012 and FY 2013, the General Fund retained half of the quarterly fee per slot machine that had been previously dedicated to the Account to Support Programs for the Prevention and Treatment of Problem Gaming.

[10] FY 2010 and FY 2011 included several large diversions to the General Fund (most notably, a portion of property tax revenues collected by Clark and Washoe counties). These diversions were not continued in the 2011-2013 biennium. Their exclusion accounts for most of the decline between FY 2011 and FY 2012.

[11] Prior to FY 2010, the Net Proceeds of Minerals Tax was collected on net proceeds from the calendar year ending in December of the given fiscal year. From FY 2010 through FY 2013, these taxes were collected based on an estimate of the net proceeds for the calendar year beginning in January of the given fiscal year and ending six months after the close of the given fiscal year, with a "true-up" to account for actual net proceeds due in the following fiscal year. In addition, in FY 2012 and FY 2013, the deduction for health and industrial insurance expenses was eliminated. The prepayment of the Net Proceeds of Minerals Tax is extended to June 30, 2016. The insurance deduction provision is scheduled to revert back to FY 2009 methodology on January 1, 2017.

[12] The period after which property is presumed to have been abandoned was reduced to 2 years from 3 years under certain conditions, producing a large increase in unclaimed property revenue in FY 2011 and FY 2012 compared with previous years.

[13] Lodging tax revenues were deposited into the General Fund in FY 2010 and FY 2011; they are deposited into the Distributive School Account beginning in FY 2012 and are scheduled to be deposited into the Supplemental School Account in FY 2018 and thereafter.

State General Fund Revenues
Budgeted Amounts Based on May 2015 Economic Forum Forecast with Adjustment for Legislative Action

General Fund Revenue Sources	FY 2015 Budget			Through	FY 2015 Collections vs Budget		
	Total	Yr/Yr Change			Actual	Year-to-Date	
	millions	millions	%			millions	Over (Under)
Sales Tax	\$999.0	\$67.7	7.3	June	\$994.7	(\$4.3)	(0.4)
Gaming Percentage Fees Collections [1]	683.7	1.4	0.2	June	693.2	9.5	1.4
Modified Business Tax - Financial & Non-Financial [2, 3]	403.7	18.9	4.9	June	410.4	6.6	1.6
Insurance Premium Tax [2]	294.4	30.9	11.7	June	283.7	(10.8)	(3.7)
Live Entertainment Tax - Gaming	131.5	(7.7)	(5.5)	June	130.9	(0.6)	(0.5)
Cigarette Tax [4]	79.7	0.0	0.1	June	92.8	13.1	16.4
Commercial Recordings	67.7	1.0	1.5	June	68.8	1.2	1.7
Real Property Transfer Tax [2]	65.4	5.4	8.9	June	64.2	(1.2)	(1.8)
Liquor Tax	43.5	1.7	4.0	June	42.7	(0.8)	(1.9)
Governmental Services Tax-Depreciation [5]	62.8	0.6	0.9	June	62.9	0.0	0.1
Governmental Services Tax-Commissions & Penalties [6]	28.8	28.8	0.0	June	28.8	0.0	0.0
Business License Fee [7]	74.1	1.9	2.6	June	75.4	1.3	1.7
State Share Various Local SUT	29.1	1.9	6.9	June	29.0	(0.0)	(0.1)
State Share LSST [8]	9.7	0.5	5.9	June	9.7	(0.0)	(0.1)
Live Entertainment Tax - NonGaming	15.2	0.2	1.3	June	15.0	(0.2)	(1.3)
Quarterly Slots [2, 9]	19.5	(0.2)	(1.1)	June	19.5	(0.0)	(0.1)
Other General Fund Revenues	170.1	1.8	1.0	June	176.4	6.2	3.7
Net Proceeds of Minerals [10]	50.8	24.5	93.6	June	51.7	1.0	1.9
Unclaimed Property [11]	11.8	(5.6)	(32.3)	June	24.3	12.5	105.5
Totals	\$3,240.5	\$173.5	5.7		\$3,273.9	\$33.4	1.0
Lodging Tax [12]	\$151.0	\$9.9	7.0	June	\$150.5	(\$0.6)	(0.4)

[1] Gaming Percentage Fees are reported in the month following the month of actual gaming activity.

[2] Amounts are reported quarterly.

[3] The rate of the Modified Business Tax for non-financial institutions was changed in FY 2010, FY 2012 and again in FY 2014, which accounts for most of the year-over-year change in revenues in those years. In FY 2010 and FY 2011, the rate was 0.5% on taxable wages up to \$62,500 per quarter and 1.17% on taxable wages above \$62,500. In FY 2012 and FY 2013, taxable wages up to \$62,500 per quarter were not taxed, while those above \$62,500 were taxed at 1.17%. In FY 2014 and FY 2015, taxable wages up to \$85,000 per quarter were not taxed, while those above \$85,000 were taxed at 1.17%. Starting in FY 2016, the rate is permanently increased to 1.475% on taxable wages that exceed \$50,000 per quarter.

[4] The State imposes a tax of 80 cents per package of 20 cigarettes, 70 cents of which is retained by the State. The 2009 Legislature permanently lowered the collection allowance provided to a taxpayer for collecting and remitting cigarette taxes from 0.5% to 0.25%, effective July 1, 2009. The excise tax on cigarettes increases to \$1.80 beginning on July 1, 2015, of which \$1.70 is deposited into the State General Fund.

[5] Governmental Services Tax proceeds from the 10% depreciation schedule change are transferred to the General Fund in FY 2012, FY 2013, FY 2015, and FY 2016. In FY 2017, 50 percent of the proceeds are deposited in the General Fund and 50 percent will be deposited in the State Highway Fund. They are scheduled to be fully retained by the Department of Motor Vehicles in FY 2018 and beyond.

[6] Governmental Services Tax proceeds from the commissions and penalties are transferred to the General Fund in FY 2015 only. The amount transferred cannot exceed \$23,724,000 in commissions and \$5,037,000 in penalties.

[7] Business License Fees for initial application and annual renewal were increased to \$200 from \$100 beginning in FY 2010. In FY 2016, these fees increase to \$500 for corporations, but stay at \$200 for all other businesses.

[8] The rate of the Local School Support Tax was increased in FY 2010 through FY 2015 to 2.60% from 2.25% previously. Effective July 1, 2015, the 2.60% rate is made permanent.

[9] In FY 2012 and FY 2013, the General Fund retained half of the quarterly fee per slot machine that had been previously dedicated to the Account to Support Programs for the Prevention and Treatment of Problem Gaming.

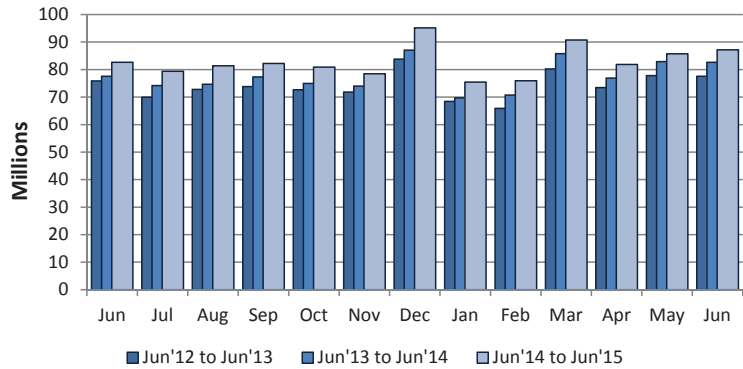
[10] Prior to FY 2010, the Net Proceeds of Minerals Tax was collected on net proceeds from the calendar year ending in December of the given fiscal year. From FY 2010 through FY 2013, these taxes were collected based on an estimate of the net proceeds for the calendar year beginning in January of the given fiscal year and ending six months after the close of the given fiscal year, with a "true-up" to account for actual net proceeds due in the following fiscal year. In addition, in FY 2012 and FY 2013, the deduction for health and industrial insurance expenses was eliminated. The prepayment of the Net Proceeds of Minerals Tax is extended to June 30, 2016. The insurance deduction provision is scheduled to revert back to FY 2009 methodology on January 1, 2017.

[11] The period after which property is presumed to have been abandoned was reduced to 2 years from 3 years under certain conditions, producing a large increase in unclaimed property revenue in FY 2011 and FY 2012 compared with previous years.

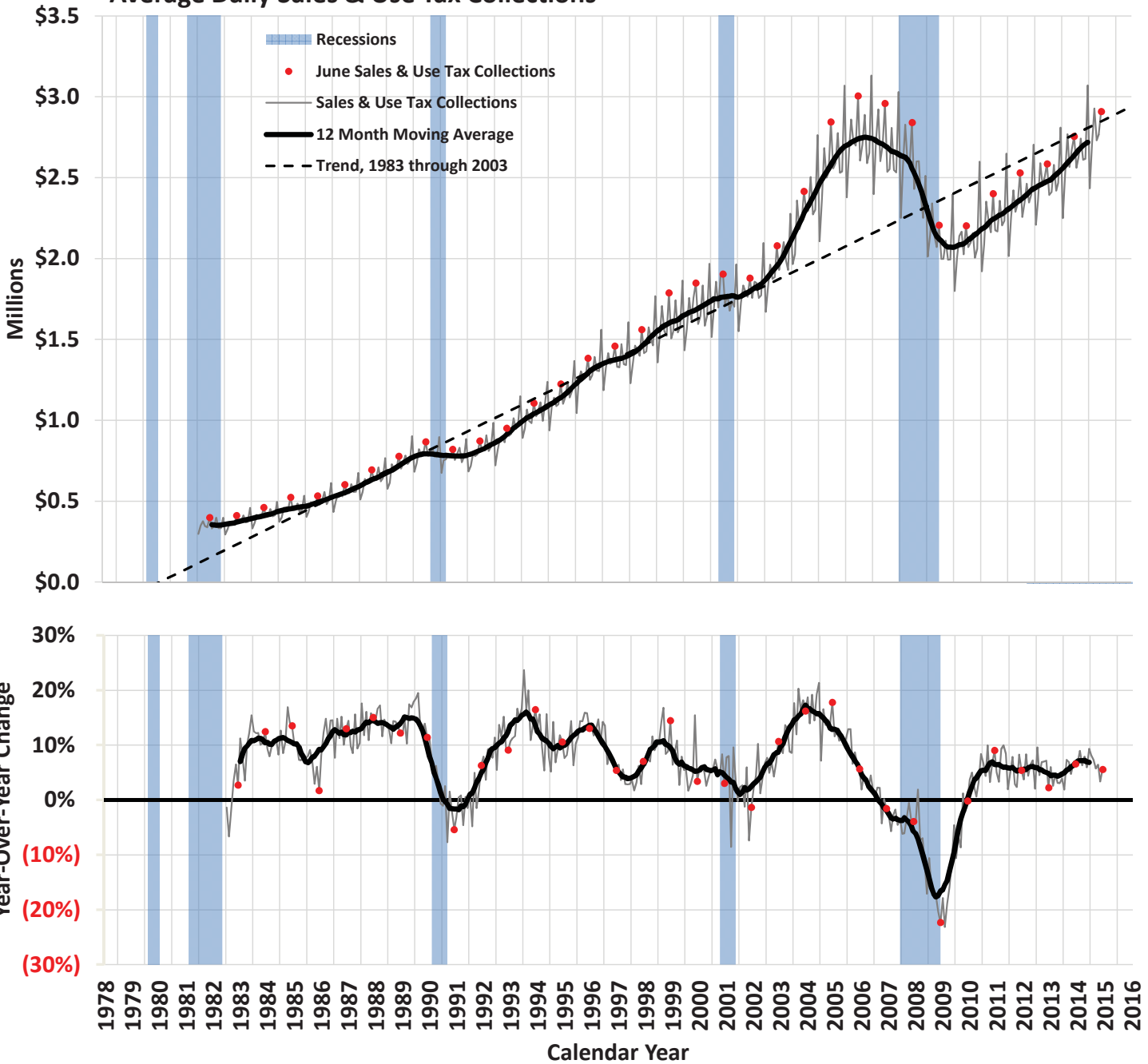
[12] Lodging tax revenues were deposited into the General Fund in FY 2010 and FY 2011; they are deposited into the Distributive School Account beginning in FY 2012 and are scheduled to be deposited into the Supplemental School Account in FY 2018 and thereafter.

2% General Fund Sales & Use Tax Collections

	Total	Year/Year Change	
	(millions)	(millions)	%
June 2014	\$82.7	\$5.1	6.6
July 2014	79.4	5.2	7.0
August 2014	81.4	6.7	9.0
September 2014	82.2	4.9	6.3
October 2014	80.9	5.9	7.9
November 2014	78.5	4.4	6.0
December 2014	95.2	8.1	9.3
January 2015	75.5	5.7	8.2
February 2015	76.0	5.2	7.3
March 2015	90.8	5.0	5.8
April 2015	81.9	4.9	6.4
May 2015	85.7	2.8	3.4
June 2015	87.2	4.6	5.5



Average Daily Sales & Use Tax Collections



*Reported values exclude amounts collected under state tax amnesty programs.

Statewide Taxable Sales & Use by Industry

	Food Services & Drinking Places (722)				Motor Vehicle & Parts Dealers (441)				Miscellaneous Retail & Non-Retail Stores (442, 443, 447, 451, 453, 454)				General Merchandise Stores (452)			
	Year/Year Change		Share of Total		Year/Year Change		Share of Total		Year/Year Change		Share of Total		Year/Year Change		Share of Total	
	(millions)	%	%	Rank	(millions)	%	%	Rank	(millions)	%	%	Rank	(millions)	%	%	Rank
June 2014	\$46.9	5.3	22.3	1	\$19.3	4.4	11.0	3	\$152.0	38.6	13.1	2	(\$126.6)	(34.7)	5.8	6
July 2014	55.3	6.6	22.1	1	4.3	0.9	12.0	2	102.6	27.8	11.8	3	10.4	3.2	8.4	5
August 2014	77.4	8.9	23.2	1	53.7	11.3	12.9	2	49.5	13.8	10.0	3	7.2	2.1	8.8	4
September 2014	(124.0)	(12.1)	21.2	1	49.3	12.0	10.9	3	127.7	32.9	12.2	2	(2.2)	(0.6)	8.4	5
October 2014	64.2	7.5	22.6	1	37.5	9.0	11.1	2	66.6	18.0	10.7	3	11.6	3.4	8.6	5
November 2014	35.2	4.4	21.2	1	28.6	7.0	10.9	3	60.9	14.7	12.0	2	15.2	3.7	10.7	4
December 2014	54.5	7.0	17.1	1	38.6	8.9	9.7	4	131.7	23.5	14.2	2	4.4	0.8	11.4	3
January 2015	78.6	9.3	24.1	1	57.4	14.4	12.0	2	31.1	8.1	10.9	3	17.8	6.1	8.1	5
February 2015	32.8	4.0	22.3	1	48.0	11.3	12.3	2	46.1	12.4	10.9	3	21.9	6.6	9.3	4
March 2015	(6.3)	(0.6)	21.9	1	50.9	10.3	12.0	2	(25.5)	(4.9)	11.0	3	10.4	2.4	9.5	4
April 2015	117.9	13.9	23.4	1	46.6	10.4	12.0	2	11.8	2.8	10.5	3	(3.2)	(1.0)	8.2	5
May 2015	72.3	7.3	24.4	1	9.4	1.8	12.0	2	44.4	10.7	10.6	3	(118.3)	(25.2)	8.1	6
June 2015	46.7	5.0	21.9	1	72.7	15.9	11.9	2	(88.1)	(16.1)	10.3	3	129.7	54.4	8.3	5

	Wholesale Trade (423-425)				Clothing & Clothing Accessories Stores (448)				Information, Financial, Insurance, Real Estate, Renting & Leasing* (511-533)				Manufacturing (311-339)			
	Year/Year Change		Share of Total		Year/Year Change		Share of Total		Year/Year Change		Share of Total		Year/Year Change		Share of Total	
	(millions)	%	%	Rank	(millions)	%	%	Rank	(millions)	%	%	Rank	(millions)	%	%	Rank
June 2014	\$46.7	14.0	9.2	4	\$14.0	4.5	7.9	5	(\$0.9)	(0.4)	5.2	9	\$3.0	1.3	5.6	7
July 2014	20.4	5.8	9.2	4	13.1	4.6	7.5	6	22.4	11.7	5.3	7	(50.5)	(20.0)	5.0	8
August 2014	22.6	6.7	8.8	5	24.9	7.9	8.3	6	12.2	6.1	5.2	7	(23.5)	(11.2)	4.6	8
September 2014	60.7	18.7	9.1	4	(2.5)	(0.7)	7.9	6	29.6	14.4	5.6	7	(31.8)	(12.6)	5.2	8
October 2014	8.7	2.5	8.8	4	(1.3)	(0.4)	7.5	6	15.1	7.0	5.6	7	(61.1)	(22.2)	5.2	8
November 2014	26.9	9.1	8.1	6	10.6	3.1	8.8	5	(0.0)	(0.0)	4.9	7	1.1	0.6	4.8	8
December 2014	29.2	8.1	8.0	6	10.6	2.4	9.3	5	43.5	19.8	5.4	9	43.6	18.7	5.7	7
January 2015	15.8	5.3	8.3	4	10.6	4.0	7.2	6	37.1	19.0	6.1	7	13.3	7.6	4.9	8
February 2015	29.0	9.7	8.6	5	2.9	1.0	7.6	6	7.2	3.4	5.6	7	15.1	9.0	4.8	8
March 2015	71.2	20.6	9.2	5	11.4	3.6	7.2	6	7.1	3.1	5.1	7	14.9	7.0	5.0	8
April 2015	29.6	8.6	9.1	4	(19.7)	(6.1)	7.4	6	4.3	2.0	5.5	7	7.8	3.9	5.0	8
May 2015	3.5	1.0	8.3	4	24.6	7.5	8.1	5	8.2	3.8	5.2	7	13.1	6.4	5.0	8
June 2015	19.4	5.1	9.0	4	4.0	1.2	7.5	6	42.3	19.7	5.8	7	10.8	4.6	5.5	8

	Building Material & Garden Equipment & Supplies (444)				Food & Beverage Stores (445)				Construction (236-238)				Health & Personal Care Stores (446)			
	Year/Year Change		Share of Total		Year/Year Change		Share of Total		Year/Year Change		Share of Total		Year/Year Change		Share of Total	
	(millions)	%	%	Rank	(millions)	%	%	Rank	(millions)	%	%	Rank	(millions)	%	%	Rank
June 2014	\$8.1	4.8	4.2	9	\$0.9	0.7	3.3	10	(\$28.1)	(22.6)	2.3	11	\$4.7	6.4	1.9	12
July 2014	10.8	6.7	4.3	9	5.4	4.1	3.4	10	0.3	0.4	2.5	11	4.6	7.0	1.7	12
August 2014	9.2	6.4	3.7	9	25.9	22.8	3.4	10	14.1	13.7	2.9	11	6.5	9.8	1.8	12
September 2014	11.1	7.4	3.8	9	(8.4)	(5.8)	3.2	10	0.7	0.6	2.6	11	4.1	5.6	1.8	12
October 2014	13.5	8.7	4.1	9	4.4	3.5	3.2	10	(10.9)	(10.5)	2.3	11	4.9	7.2	1.8	12
November 2014	12.6	9.0	3.8	9	4.3	3.3	3.4	10	(4.5)	(5.5)	2.0	11	(1.9)	(2.8)	1.7	12
December 2014	16.9	12.4	3.1	10	6.1	3.3	3.9	9	17.3	16.9	2.5	11	5.7	6.2	2.0	12
January 2015	12.8	9.7	3.8	9	4.8	3.9	3.3	10	1.3	1.6	2.2	11	3.5	5.1	1.9	12
February 2015	19.1	14.5	3.9	9	11.7	9.6	3.5	10	55.7	229.6	2.1	11	4.3	6.1	1.9	12
March 2015	25.7	15.5	4.2	9	9.3	7.0	3.1	10	2.5	3.0	1.9	11	2.3	2.8	1.9	12
April 2015	15.3	8.4	4.8	9	6.5	5.0	3.3	10	2.4	3.0	2.0	11	3.0	4.0	1.9	12
May 2015	6.6	3.8	4.2	9	4.8	3.4	3.4	10	4.2	5.0	2.1	11	3.0	4.0	1.8	12
June 2015	24.7	14.1	4.5	10	9.1	6.7	3.3	11	11.8	12.3	2.4	12	4.9	6.2	1.9	13

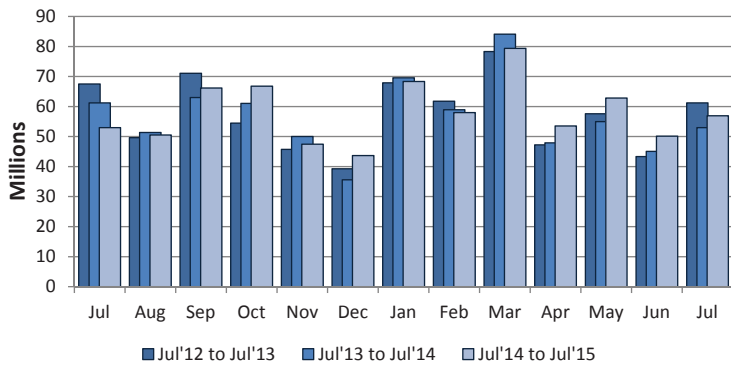
	Natural Resources & Utilities* (111-221)				Arts, Entertainment, Recreation & Accommodation (710-721)				Transportation & Warehousing (481-493)				Other Services**, Public Administration & Miscellaneous* (541-624, 811-999)			
	Year/Year Change		Share of Total		Year/Year Change		Share of Total		Year/Year Change		Share of Total		Year/Year Change		Share of Total	
	(millions)	%	%	Rank	(millions)	%	%	Rank	(millions)	%	%	Rank	(millions)	%	%	Rank
June 2014	(\$2.9)	(5.4)	1.2	13	\$7.9	25.5	0.9	14	\$13.2	72.4	0.8	15	\$29.2	15.4	5.3	8
July 2014	2.7	5.6	1.3	13	12.9	58.9	0.9	14	0.9	6.0	0.4	15	23.0	15.7	4.2	10
August 2014	(21.8)	(36.5)	0.9	13	6.1	21.3	0.8	14	8.3	58.0	0.6	15	12.3	7.8	4.2	9
September 2014	(9.4)	(14.3)	1.3	13	8.9	27.9	1.0	14	(1.5)	(8.0)	0.4	15	48.6	27.7	5.3	8
October 2014	21.0	44.8	1.7	13	13.2	37.6	1.2	14	10.2	61.2	0.7	15	(8.5)	(4.1)	4.9	9
November 2014	(18.8)	(25.6)	1.4	13	6.0	18.2	1.0	14	8.3	51.6	0.6	15	69.8	62.8	4.6	9
December 2014	1.5	3.5	0.9	13	4.5	12.6	0.8	14	4.5	23.3	0.5	15	38.4	17.0	5.4	8
January 2015	(16.9)	(32.3)	0.9	14	3.1	8.2	1.1	13	3.6	24.2	0.5	15	18.7	11.7	4.7	9
February 2015	7.1	17.9	1.2	13	4.3	13.6	0.9	14	0.7	3.9	0.5	15	12.8	7.8	4.6	9
March 2015	(46.4)	(49.2)	1.1	14	26.7	63.4	1.5	13	0.2	1.1	0.4	15	(37.0)	(14.5)	4.8	9
April 2015	8.9	19.1	1.3	13	0.1	0.3	0.9	14	(4.3)	(18.5)	0.5	15	(13.0)	(6.8)	4.3	10
May 2015	14.2	37.1	1.2	13	5.6	14.2	1.0	14	5.0	36.9	0.4	15	(10.4)	(5.3)	4.3	9
June 2015	22.0	44.3	1.6	14	4.8	12.3	1.0	15	(13.1)	(41.9)	0.4	16	(6.1)	(2.8)	4.8	9

* Statistically significant outliers in most recent month's data

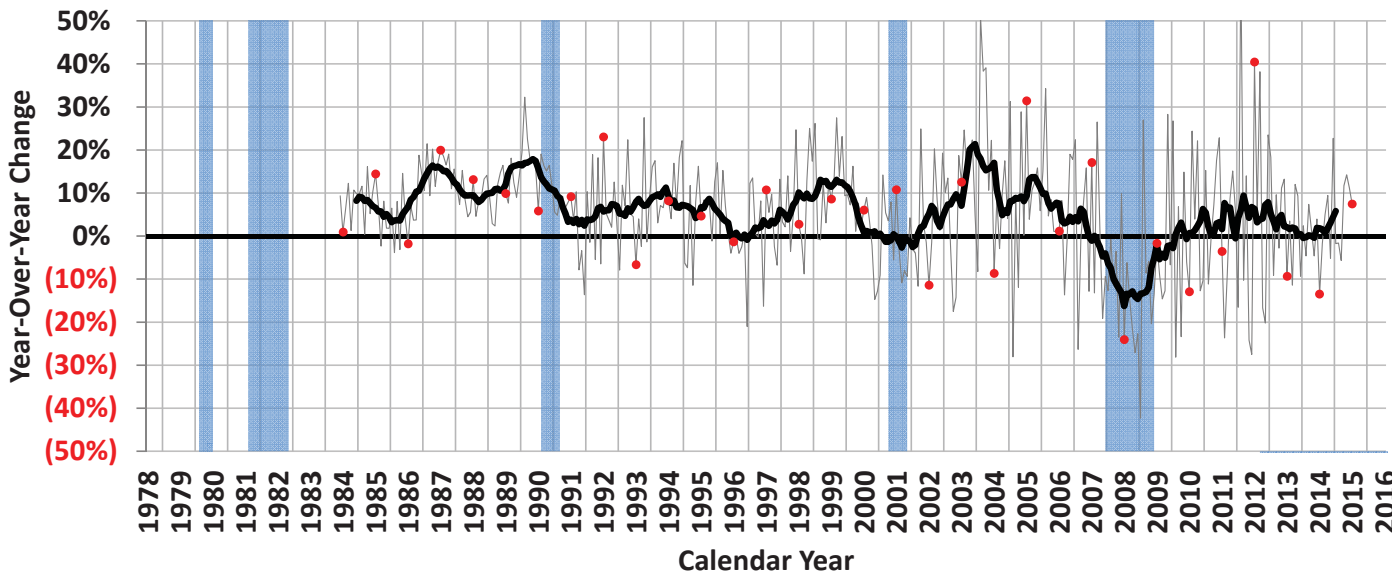
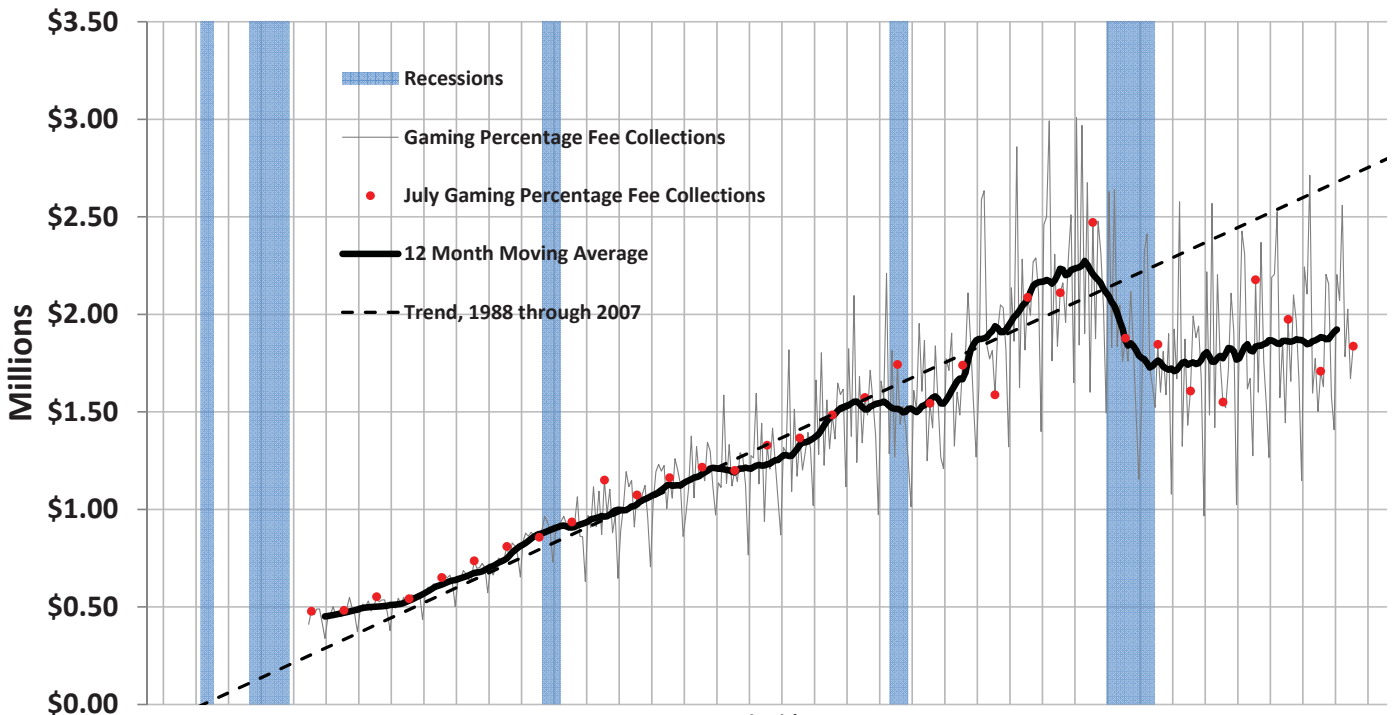
** Other Services includes Professional, Management, Administration, Education and Health Services.

Gaming Percentage Fees Collections

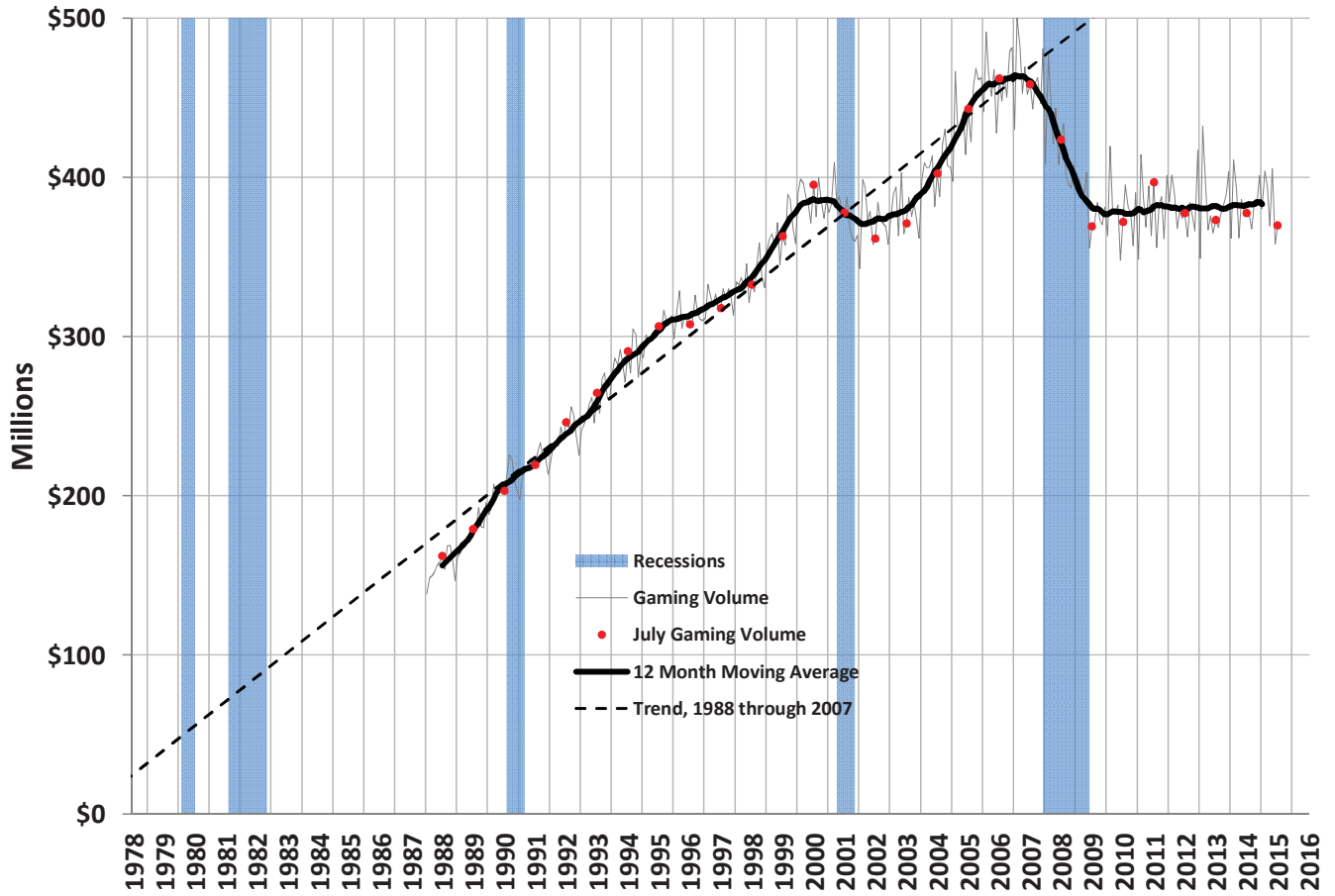
	Total	Year/Year Change	
	(millions)	(millions)	%
July 2014	\$53.0	(\$8.2)	(13.5)
August 2014	50.5	(0.9)	(1.7)
September 2014	66.2	3.2	5.0
October 2014	66.8	5.8	9.5
November 2014	47.4	(2.6)	(5.1)
December 2014	43.7	8.1	22.7
January 2015	68.4	(1.2)	(1.7)
February 2015	58.0	(1.0)	(1.6)
March 2015	79.4	(4.8)	(5.7)
April 2015	53.5	5.6	11.7
May 2015	62.8	7.8	14.3
June 2015	50.1	5.0	11.2
July 2015	56.9	4.0	7.5



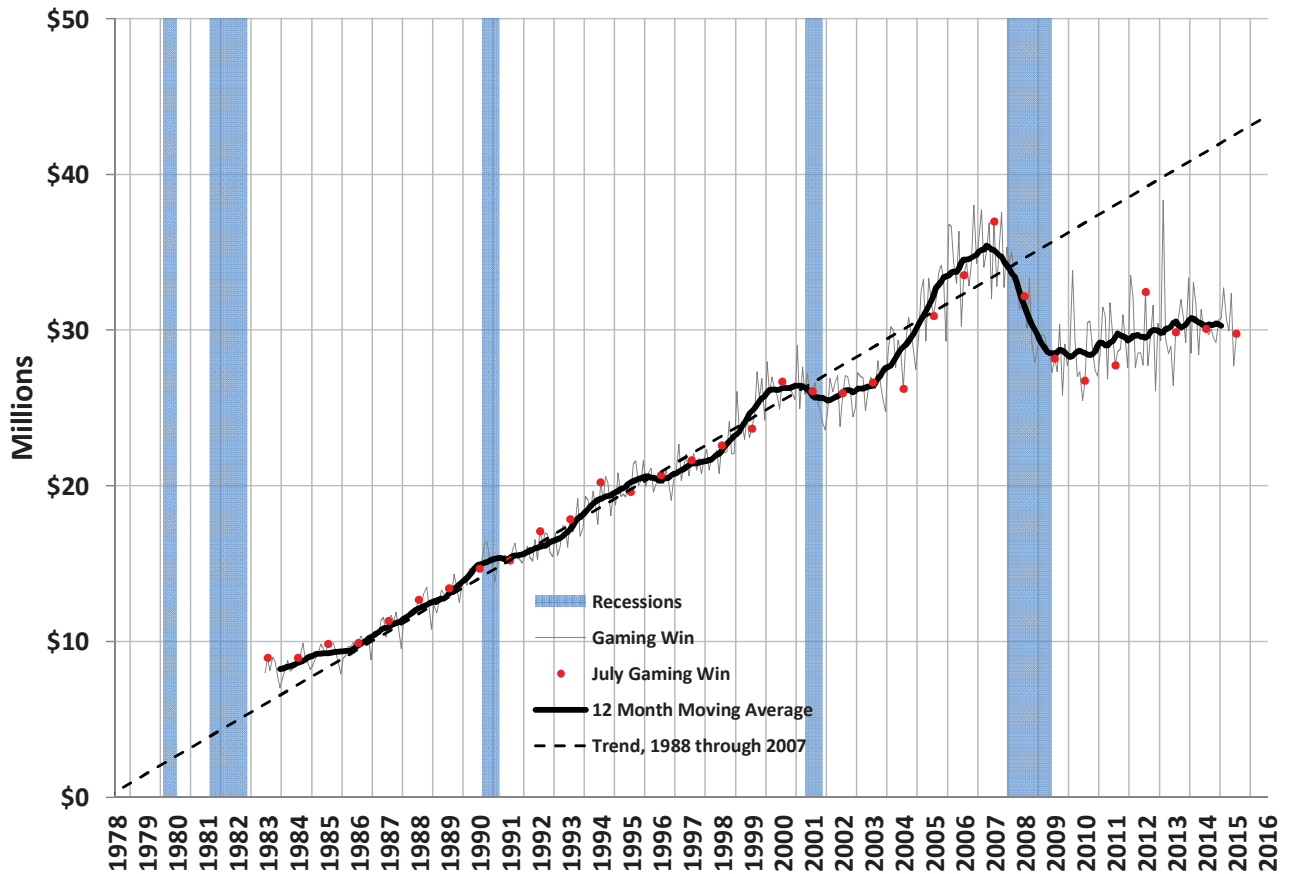
Average Daily Gaming Percentage Fee Collections



Average Daily Gaming Volume

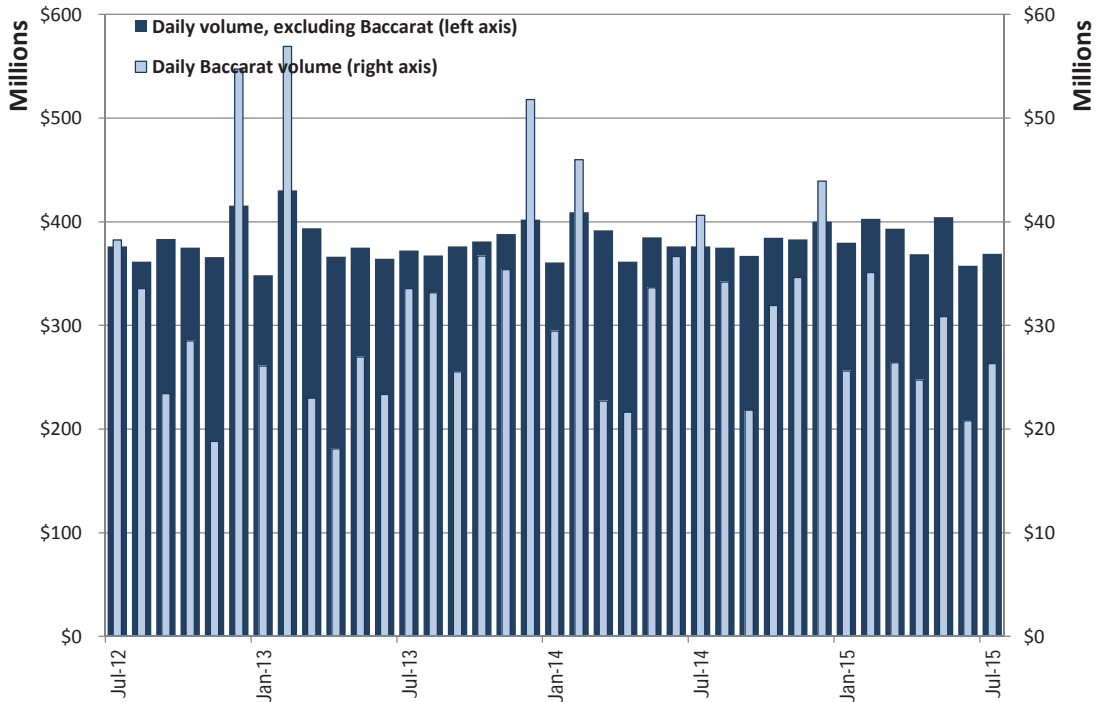


Average Daily Gaming Win

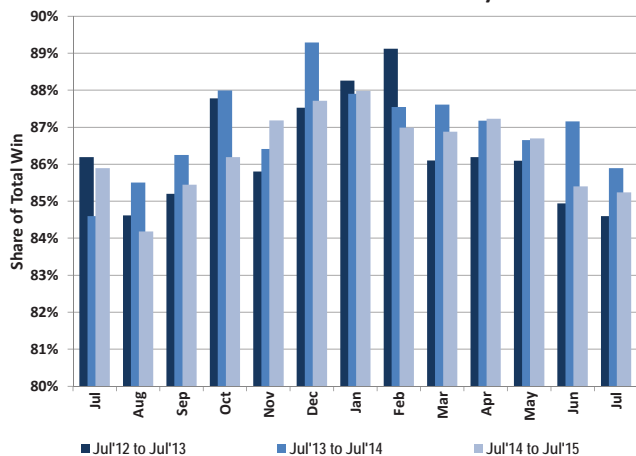


Statewide Gaming Activity										
Date	Slots		Games Excluding Baccarat		Baccarat		Tables	Total Win	Taxable Gross Revenue	Pct. Fee due after EFA
	Coin-In	Win	Volume	Win	Volume	Win	Win			
	Yr/Yr Pct. Chg.	Yr/Yr Pct. Chg.	Yr/Yr Pct. Chg.	Yr/Yr Pct. Chg.	Yr/Yr Pct. Chg.	Yr/Yr Pct. Chg.	Yr/Yr Pct. Chg.			
Jul-13	(1.1)	(1.0)	6.5	(1.8)	(12.2)	(37.4)	3.3	(8.0)	(2.6)	(11.1)
Aug-13	0.2	(2.7)	12.1	22.3	(1.3)	55.6	5.0	11.2	(1.0)	(0.2)
Sep-13	(4.8)	3.8	8.1	2.5	8.9	49.9	0.5	7.4	(0.9)	(8.8)
Oct-13	(1.3)	(6.3)	3.0	(4.0)	28.7	16.7	9.4	(2.6)	4.6	12.1
Nov-13	0.5	(6.8)	7.8	41.8	88.2	81.4	8.3	11.9	(2.5)	1.2
Dec-13	(3.0)	13.3	(2.5)	(11.2)	(5.4)	28.2	(1.6)	9.6	0.2	1.1
Jan-14	3.4	(5.0)	0.4	9.8	12.9	(16.5)	7.3	(2.8)	3.9	0.2
Feb-14	(1.7)	(0.6)	(7.7)	(15.0)	(19.2)	(40.0)	0.1	(13.7)	(2.1)	(3.8)
Mar-14	(1.5)	3.8	4.7	8.4	(1.2)	36.1	0.5	7.6	4.7	7.6
Apr-14	(2.7)	(4.7)	(0.8)	0.1	19.4	39.1	2.6	(0.3)	(1.9)	(7.8)
May-14	0.2	(4.3)	4.9	9.0	24.8	85.5	(0.0)	8.2	(3.8)	(5.5)
Jun-14	(1.2)	7.7	3.9	(3.2)	57.0	155.0	(4.7)	14.3	0.3	(6.2)
Jul-14	(0.0)	(2.9)	(4.7)	3.5	21.1	13.9	(8.0)	0.7	(5.8)	(9.4)
Aug-14	1.9	(0.8)	2.8	(2.7)	3.2	(12.4)	(4.6)	(3.7)	2.5	10.0
Sep-14	(0.4)	0.1	(6.4)	(9.2)	(14.5)	(29.1)	(8.1)	(6.0)	4.5	7.5
Oct-14	3.5	0.7	(2.5)	2.8	(13.0)	(33.1)	(9.3)	(4.3)	2.1	9.5
Nov-14	(1.3)	5.9	(0.7)	(11.1)	(2.2)	(1.4)	(6.9)	0.0	4.9	(0.4)
Dec-14	1.1	0.3	3.8	3.8	(15.2)	(38.2)	(4.4)	(8.1)	10.3	31.3
Jan-15	4.7	(1.1)	16.8	8.2	(13.0)	69.1	(3.4)	7.7	(4.7)	(9.8)
Feb-15	1.5	4.9	(1.1)	0.9	(23.7)	(23.6)	(8.0)	(1.1)	1.2	1.0
Mar-15	(0.1)	3.5	(2.4)	(7.1)	16.3	(33.1)	(6.6)	(3.1)	2.6	(3.1)
Apr-15	1.3	6.1	0.5	3.5	14.4	5.6	(3.2)	5.4	6.0	23.3
May-15	3.5	8.0	20.3	21.8	(8.2)	(36.4)	0.6	3.3	7.8	14.4
Jun-15	(0.7)	(1.0)	(2.3)	1.9	(43.3)	(56.0)	4.5	(8.4)	9.0	20.4
Jul-15	2.5	5.5	(1.1)	(4.3)	(35.2)	(23.1)	0.6	(1.0)	4.9	4.0

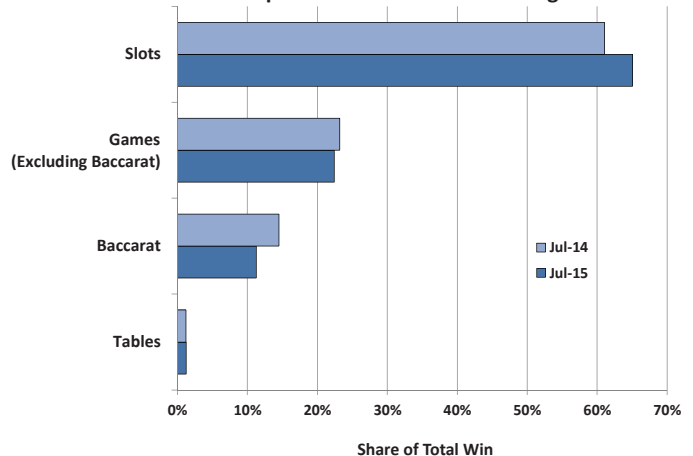
Statewide Average Daily Gaming Volume



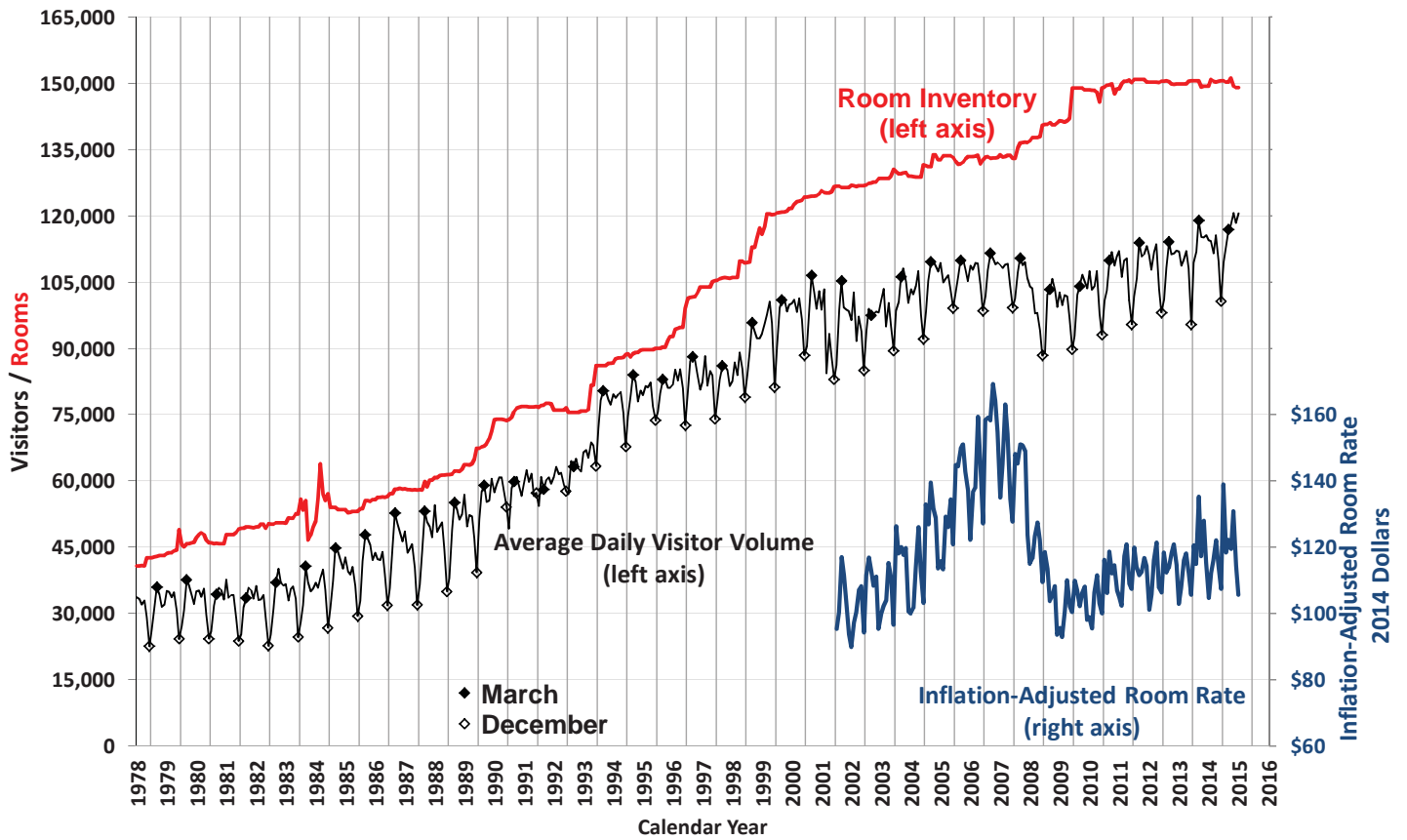
Share of Statewide Win from Clark County



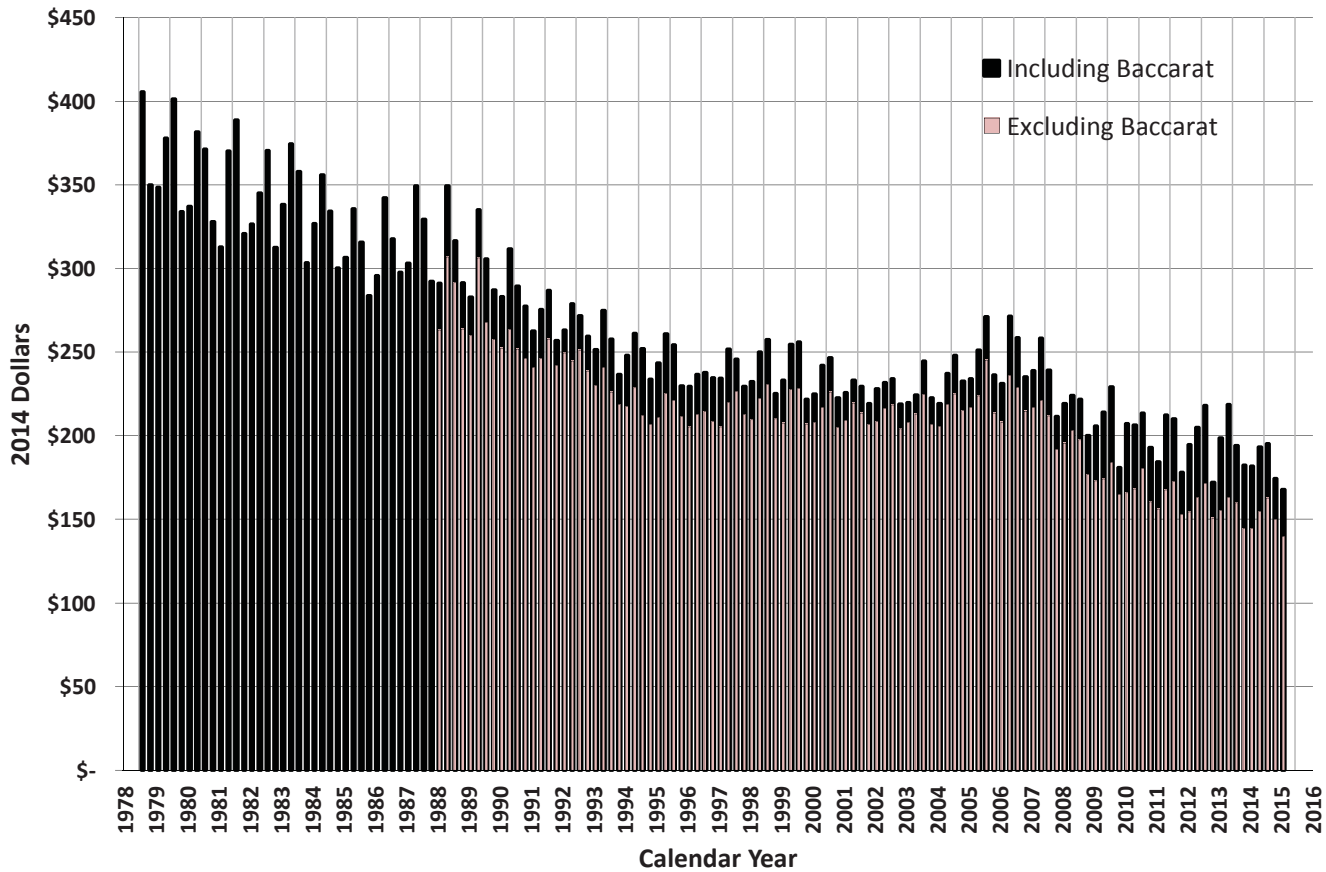
Components of Statewide Gaming Win



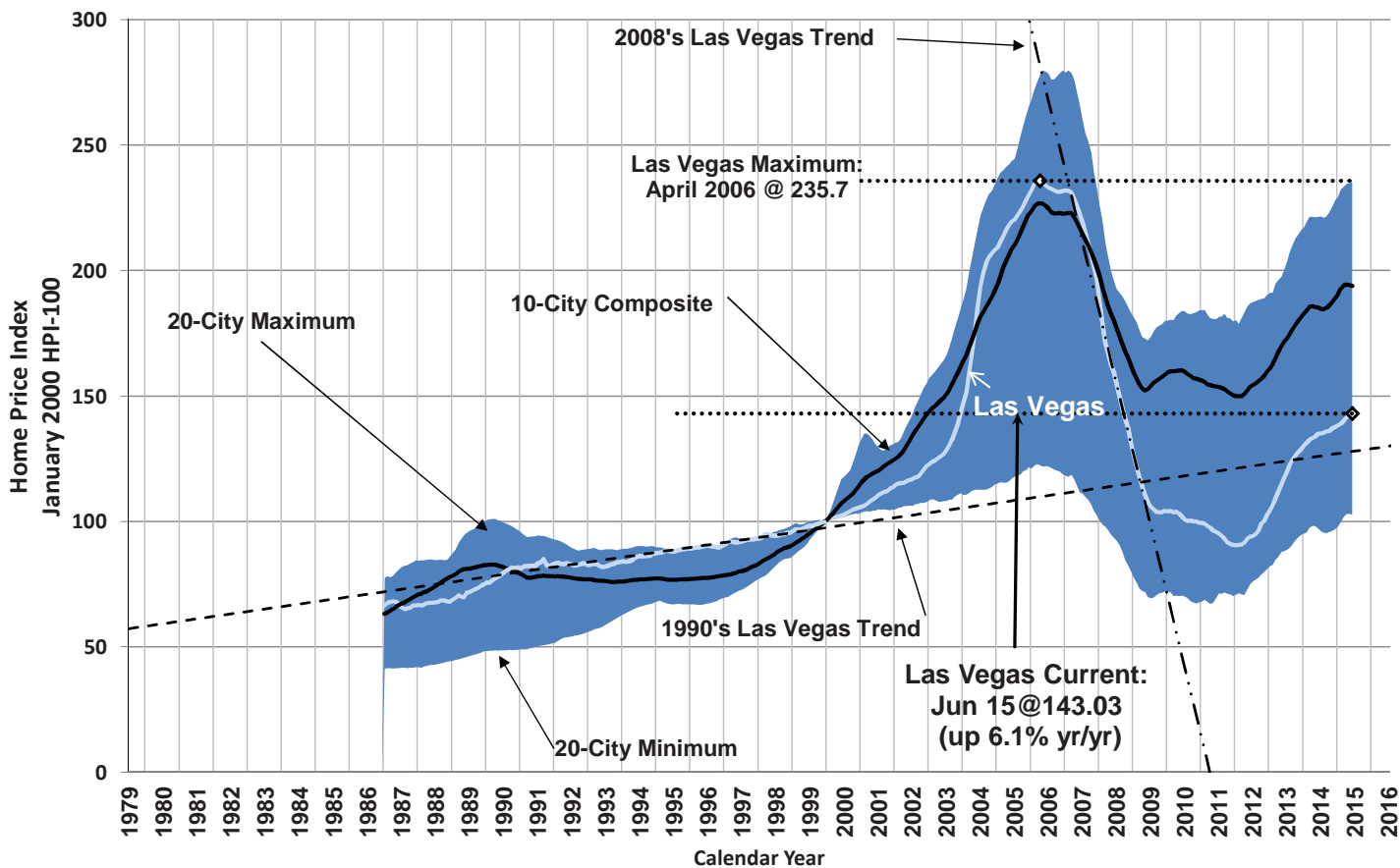
Las Vegas Visitors vs. Rooms



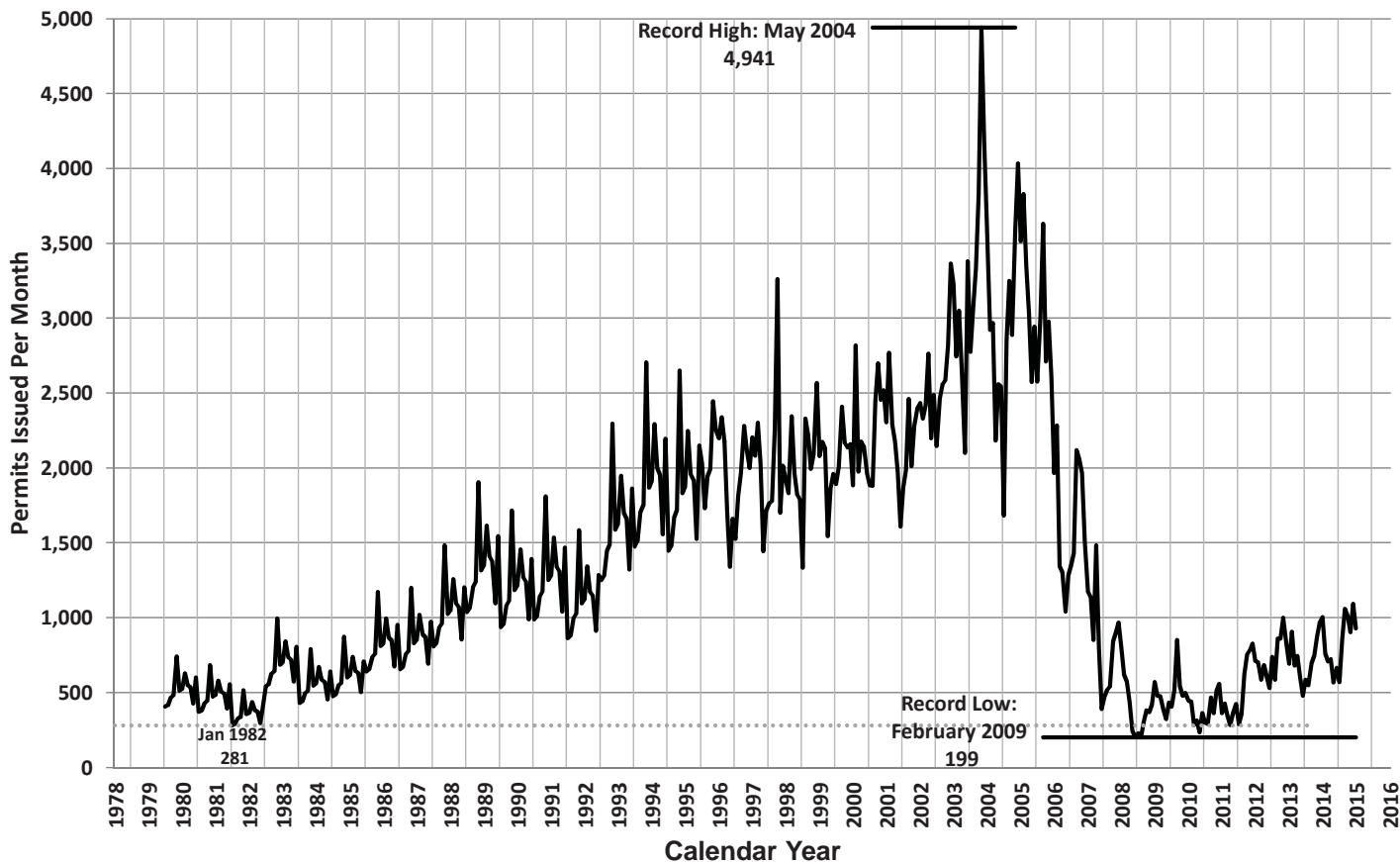
Average Las Vegas Gaming Win per Visitor (Inflation-Adjusted)



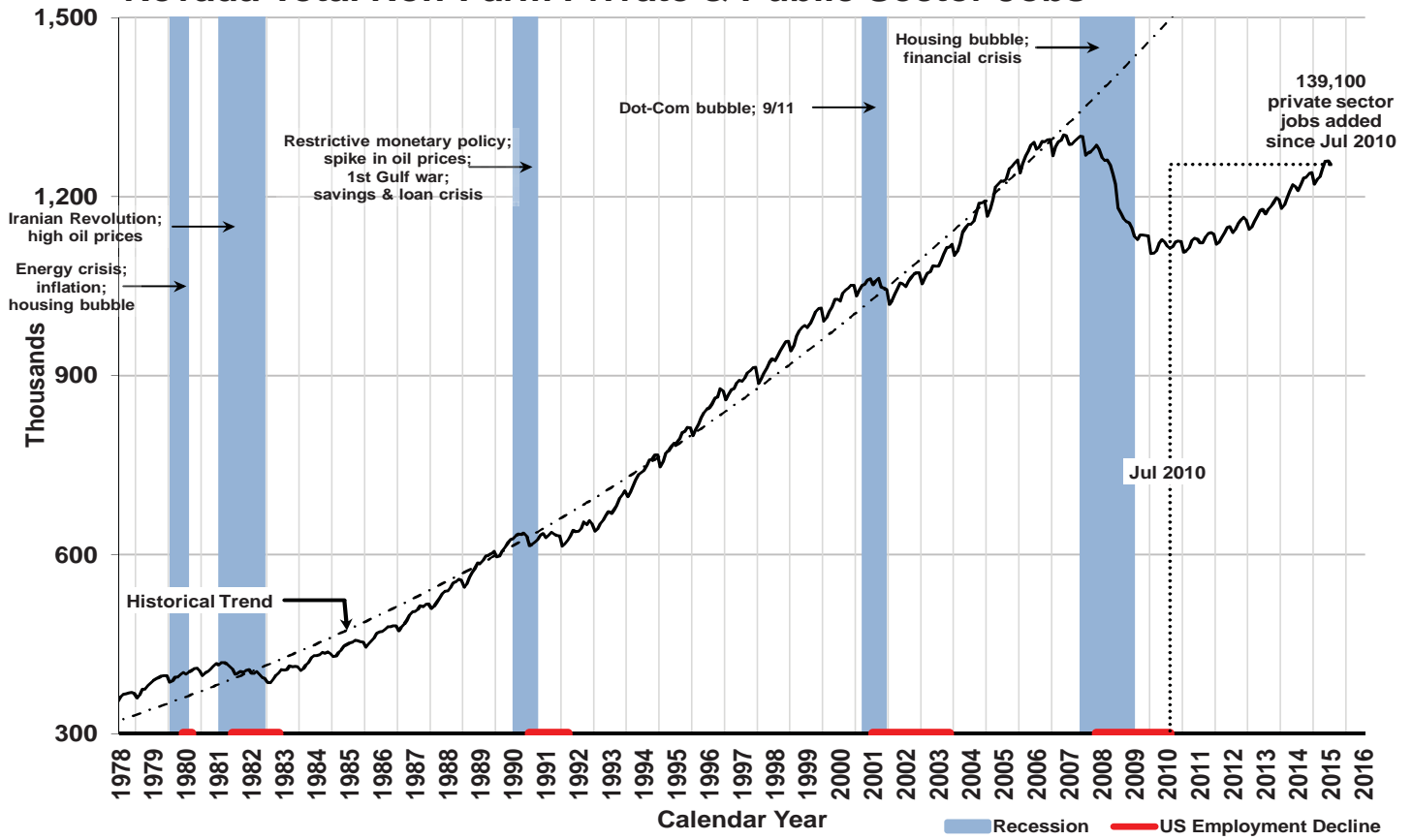
Case-Shiller Seasonally Adjusted Home Price Index



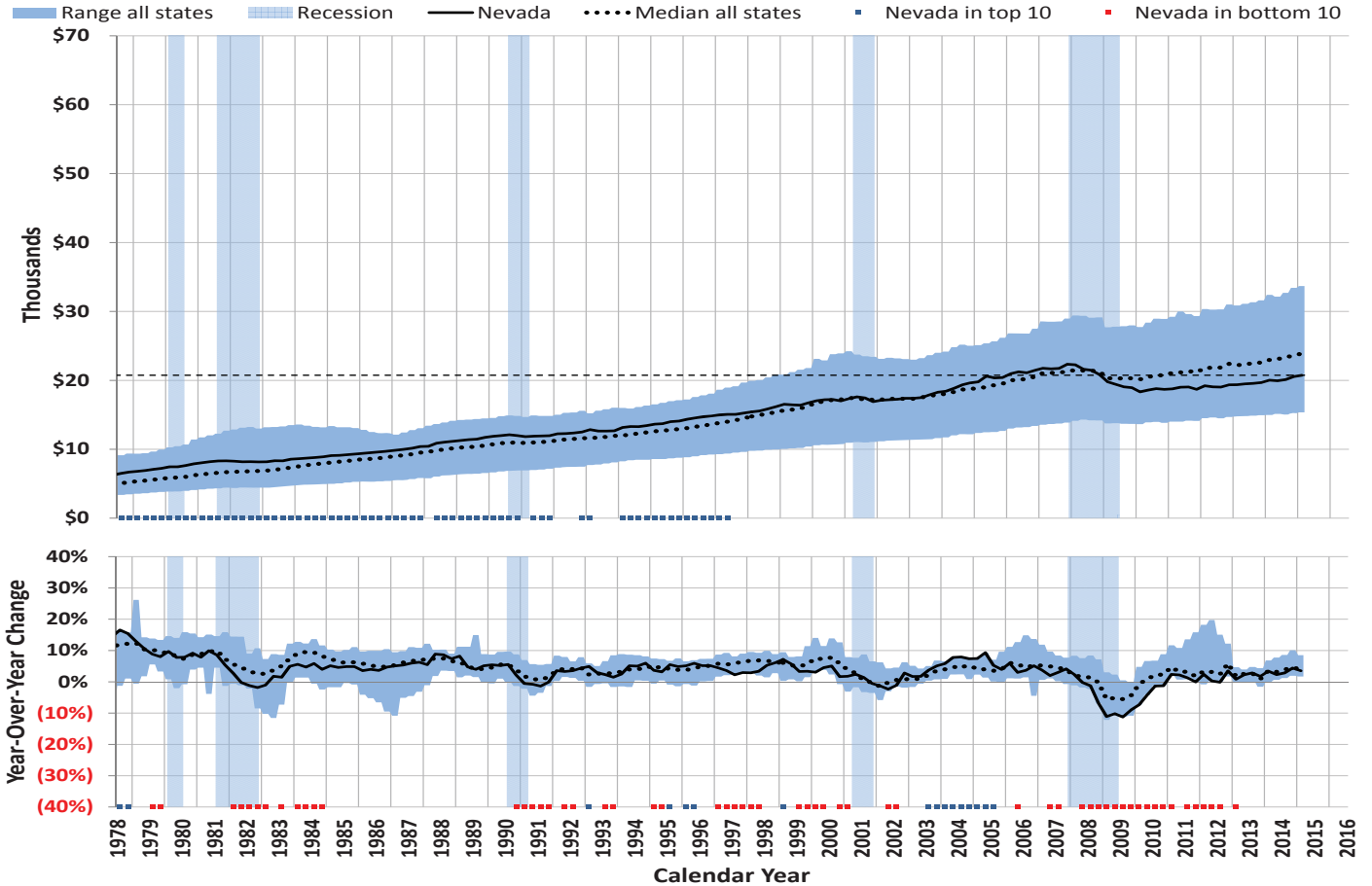
Nevada Single Family Home Permits Issued Each Month



Nevada Total Non-Farm Private & Public Sector Jobs



Per Capita Wages & Salaries



Statewide Employment by Sector

	Leisure & Hospitality				Trade, Transportation & Utilities				Professional Services				Education & Healthcare			
	Yr/Yr Change		Share of Total		Yr/Yr Change		Share of Total		Yr/Yr Change		Share of Total		Yr/Yr Change		Share of Total	
	(thou.)	%	%	Rank	(thou.)	%	%	Rank	(thou.)	%	%	Rank	(thou.)	%	%	Rank
July 2014	10.5	3.2	28.1	1	7.5	3.4	18.9	2	4.9	3.3	12.6	3	4.8	4.3	9.6	4
August 2014	14.6	4.4	28.1	1	8.2	3.7	18.9	2	5.7	3.8	12.8	3	5.0	4.5	9.6	4
September 2014	14.1	4.3	27.8	1	8.7	3.9	18.8	2	7.6	5.1	12.7	3	4.8	4.3	9.5	4
October 2014	15.4	4.7	27.7	1	9.0	4.0	19.0	2	5.8	3.8	12.8	3	3.6	3.2	9.5	4
November 2014	14.8	4.6	27.4	1	6.7	2.9	19.3	2	7.9	5.2	13.0	3	4.4	3.9	9.5	4
December 2014	17.1	5.3	27.4	1	7.4	3.2	19.4	2	7.8	5.2	12.8	3	5.8	5.1	9.6	4
January 2015	16.6	5.2	27.8	1	8.8	3.9	19.1	2	4.8	3.1	12.9	3	5.4	4.8	9.7	4
February 2015	15.8	4.9	27.7	1	9.4	4.2	19.0	2	5.3	3.5	12.9	3	5.2	4.5	9.7	4
March 2015	12.9	3.9	27.9	1	7.2	3.2	18.8	2	4.3	2.8	12.8	3	4.0	3.5	9.6	4
April 2015	15.7	4.7	28.2	1	6.6	2.9	18.7	2	3.2	2.1	12.7	3	5.6	4.9	9.7	4
May 2015	16.4	4.8	28.2	1	6.4	2.8	18.6	2	3.7	2.4	12.6	3	6.6	5.7	9.7	4
June 2015	16.6	4.9	28.3	1	4.7	2.1	18.5	2	3.7	2.4	12.6	3	6.1	5.3	9.7	4
July 2015	17.8	5.2	28.6	1	3.4	1.5	18.6	2	6.2	4.1	12.7	3	7.0	6.0	9.8	4

	Local Government				Construction				Financial Services				Manufacturing			
	Yr/Yr Change		Share of Total		Yr/Yr Change		Share of Total		Yr/Yr Change		Share of Total		Yr/Yr Change		Share of Total	
	(thou.)	%	%	Rank	(thou.)	%	%	Rank	(thou.)	%	%	Rank	(thou.)	%	%	Rank
July 2014	1.3	1.5	7.5	5	7.0	12.1	5.4	6	(0.6)	(2.9)	1.6	10	1.0	2.5	3.4	7
August 2014	(0.4)	(0.4)	7.5	5	6.7	11.3	5.4	6	(0.4)	(2.1)	1.6	10	0.7	1.7	3.4	7
September 2014	0.9	0.9	7.9	5	6.7	11.2	5.4	6	(0.1)	(0.6)	1.6	10	0.6	1.5	3.4	7
October 2014	0.3	0.3	7.9	5	4.0	6.6	5.2	6	(2.7)	(13.4)	1.4	11	0.7	1.7	3.4	7
November 2014	(0.4)	(0.4)	7.9	5	4.6	7.7	5.2	6	(2.6)	(12.8)	1.4	11	0.8	1.9	3.4	7
December 2014	(1.0)	(1.0)	7.9	5	5.9	10.1	5.2	6	(2.4)	(12.1)	1.4	11	0.8	1.9	3.4	7
January 2015	(0.2)	(0.2)	8.0	5	4.5	7.7	5.1	6	(0.2)	(1.1)	1.4	11	0.2	0.5	3.4	7
February 2015	0.4	0.4	8.0	5	4.3	7.3	5.1	6	0.0	0.0	1.4	11	0.3	0.7	3.4	7
March 2015	0.0	0.0	8.0	5	4.2	7.1	5.2	6	0.1	0.6	1.4	11	0.4	1.0	3.4	7
April 2015	(0.1)	(0.1)	7.9	5	5.2	8.5	5.3	6	0.2	1.1	1.6	10	0.4	1.0	3.3	7
May 2015	0.7	0.7	7.9	5	5.2	8.3	5.4	6	0.1	0.6	1.6	10	0.4	1.0	3.3	7
June 2015	2.2	2.3	7.7	5	7.7	12.2	5.6	6	0.6	2.9	1.6	10	0.7	1.7	3.4	7
July 2015	0.6	0.7	7.3	5	6.6	10.2	5.7	6	0.6	2.9	1.6	10	0.8	1.9	3.4	7

	Other Services				State Government				Federal Government				Information			
	Yr/Yr Change		Share of Total		Yr/Yr Change		Share of Total		Yr/Yr Change		Share of Total		Yr/Yr Change		Share of Total	
	(thou.)	%	%	Rank	(thou.)	%	%	Rank	(thou.)	%	%	Rank	(thou.)	%	%	Rank
July 2014	1.6	4.7	3.0	8	0.8	2.3	2.9	9	(0.3)	(1.6)	1.5	11	0.3	2.3	1.1	13
August 2014	1.5	4.4	2.9	9	0.2	0.6	2.9	8	(0.3)	(1.6)	1.5	11	0.5	3.9	1.1	13
September 2014	1.7	5.0	2.9	9	2.0	5.5	3.1	8	(0.2)	(1.1)	1.5	11	0.6	4.7	1.1	13
October 2014	1.5	4.5	2.9	9	1.7	4.5	3.2	8	0.0	0.0	1.5	10	0.6	4.6	1.1	13
November 2014	0.9	2.7	2.8	9	1.1	2.9	3.2	8	0.2	1.1	1.5	10	0.4	3.0	1.1	13
December 2014	0.3	0.9	2.7	9	0.9	2.3	3.2	8	0.2	1.1	1.5	10	0.5	3.8	1.1	13
January 2015	0.6	1.8	2.8	9	(1.1)	(3.1)	2.9	8	0.2	1.1	1.5	10	0.7	5.5	1.1	13
February 2015	0.8	2.4	2.8	9	1.0	2.6	3.2	8	0.3	1.7	1.5	10	0.5	3.8	1.1	13
March 2015	0.8	2.4	2.8	9	0.9	2.3	3.2	8	0.2	1.1	1.4	10	0.8	6.3	1.1	13
April 2015	0.9	2.6	2.9	9	1.1	2.9	3.2	8	0.7	4.0	1.5	11	(0.4)	(2.9)	1.1	13
May 2015	1.0	2.8	2.9	9	0.2	0.5	3.1	8	0.6	3.4	1.5	11	(1.0)	(6.8)	1.1	12
June 2015	1.1	3.1	2.9	8	0.2	0.6	2.9	9	0.6	3.3	1.5	11	(1.3)	(8.4)	1.1	12
July 2015	1.0	2.8	2.9	8	0.2	0.6	2.8	9	0.6	3.3	1.5	11	0.2	1.5	1.1	13

	Natural Resources				All Non-Farm Jobs			All Private Non-Farm Jobs			All Public Non-Farm Jobs		
	Yr/Yr Change		Share of Total		Total	Yr/Yr Change		Total	Yr/Yr Change		Total	Yr/Yr Change	
	(thou.)	%	%	Rank	(thou.)	(thou.)	%	(thou.)	(thou.)	%	(thou.)	(thou.)	%
July 2014	(1.1)	(7.0)	1.2	12	1,209.8	38.6	3.3	1,065.5	36.8	3.6	144.3	1.8	1.3
August 2014	(1.0)	(6.4)	1.2	12	1,220.9	42.1	3.6	1,075.9	42.6	4.1	145.0	(0.5)	(0.3)
September 2014	(0.6)	(4.0)	1.2	12	1,230.9	47.9	4.0	1,077.1	45.2	4.4	153.8	2.7	1.8
October 2014	(0.4)	(2.7)	1.2	12	1,232.4	42.8	3.6	1,077.4	40.8	3.9	155.0	2.0	1.3
November 2014	(0.4)	(2.7)	1.2	12	1,238.8	40.7	3.4	1,083.7	39.8	3.8	155.1	0.9	0.6
December 2014	(0.5)	(3.4)	1.1	12	1,240.3	45.0	3.8	1,084.8	44.9	4.3	155.5	0.1	0.1
January 2015	(0.4)	(2.8)	1.1	12	1,220.5	40.1	3.4	1,070.6	41.2	4.0	149.9	(1.1)	(0.7)
February 2015	(0.3)	(2.1)	1.1	12	1,229.5	42.8	3.6	1,074.0	41.1	4.0	155.5	1.7	1.1
March 2015	(0.5)	(3.5)	1.1	12	1,233.5	35.2	2.9	1,077.2	34.1	3.3	156.3	1.1	0.7
April 2015	(0.6)	(4.2)	1.1	12	1,247.5	38.5	3.2	1,090.9	36.8	3.5	156.6	1.7	1.1
May 2015	(0.7)	(4.9)	1.1	13	1,259.2	39.5	3.2	1,102.1	38.0	3.6	157.1	1.5	1.0
June 2015	(0.8)	(5.5)	1.1	13	1,259.6	42.7	3.5	1,107.8	39.7	3.7	151.8	3.0	2.0
July 2015	(0.9)	(6.2)	1.1	12	1,253.9	44.1	3.6	1,108.2	42.7	4.0	145.7	1.4	1.0

Per Capita Personal Income

