



| | | US Rate | Nevada Rate | Rank 1 = best |
|-----------------------------|-------------------|------------|----------------|------------------|
| Home Price Index (FHFA)* | 2019q3 v 2018q3 | 4.9% | 5.0% | 28 |
| Wage & Salary Disbursements | 2019q2 v 2018q2 | 5.4% | 6.4% | 9 |
| Personal Income | 2019q2 v 2018q2 | 4.9% | 6.0% | 7 |
| Employment* | Oct '19 v Oct '18 | 1.4% | 2.2% | 7 |
| Unemployment* | Oct '19 | 3.6% | 4.1% | 39 |

*Seasonally adjusted.

It is remarkable how often
the first interpretations of new evidence
have confirmed the preconceptions of its discoverer.
- John Reader

State General Fund Revenues Historical Collections and Year-to-Date FY 2020 Collections compared to Year-to-Date FY 2019

| General Fund Revenue Sources | FY 2017 Actual | | | FY 2018 Actual | | | FY 2019 Actual | | | FY 2020 Actual | | |
|--|-------------------|----------------|------------|-------------------|----------------|------------|-------------------|----------------|------------|-------------------|---------------|------------|
| | Total | Yr/Yr Change | | Total | Yr/Yr Change | | Total | Yr/Yr Change | | Total | Yr/Yr Change | |
| | millions | millions | % | millions | millions | % | millions | millions | % | millions | millions | % |
| Sales Tax [1] | \$1,090.7 | \$54.1 | 5.2 | \$1,142.8 | \$52.1 | 4.8 | \$1,235.1 | \$92.3 | 8.1 | \$321.6 | \$22.3 | 7.5 |
| Gaming Percentage Fees Collections (Net) [2, 5] | \$688.4 | \$12.4 | 1.8 | \$683.6 | (\$4.8) | (0.7) | \$708.7 | \$25.1 | 3.7 | \$309.2 | \$47.5 | 18.1 |
| Modified Business Tax - Financial, NonFinancial and Mining (Net) [3, 4, 5] | \$575.2 | \$13.5 | 2.4 | \$581.8 | \$6.6 | 1.1 | \$640.4 | \$58.5 | 10.1 | \$137.2 | \$9.5 | 7.5 |
| Insurance Premium Tax (Net) [3, 5] | \$358.5 | \$49.4 | 16.0 | \$394.3 | \$35.8 | 10.0 | \$422.5 | \$28.2 | 7.2 | \$111.7 | \$25.0 | 28.8 |
| Live Entertainment Tax - Gaming [6] | \$102.3 | (\$9.7) | (8.6) | \$100.9 | (\$1.5) | (1.4) | \$105.6 | \$4.8 | 4.7 | \$38.0 | \$3.4 | 9.9 |
| Cigarette Tax | \$180.7 | \$27.6 | 18.1 | \$160.7 | (\$20.0) | (11.1) | \$164.4 | \$3.7 | 2.3 | \$40.6 | (\$2.9) | (6.8) |
| Commercial Recordings | \$74.6 | \$0.9 | 1.2 | \$77.1 | \$2.5 | 3.3 | \$76.2 | (\$0.9) | (1.1) | \$27.0 | (\$3.2) | (10.6) |
| Real Property Transfer Tax | \$84.0 | \$8.2 | 10.8 | \$103.4 | \$19.4 | 23.1 | \$101.0 | (\$2.3) | (2.3) | \$28.5 | \$1.5 | 5.6 |
| Liquor Tax | \$43.9 | (\$0.1) | (0.2) | \$44.2 | \$0.3 | 0.7 | \$44.8 | \$0.6 | 1.3 | \$11.1 | \$1.1 | 10.6 |
| Transportation Connection Tax [7] | \$23.1 | \$11.2 | 94.2 | \$21.8 | (\$1.3) | (5.7) | \$30.2 | \$8.4 | 38.8 | \$3.0 | \$0.6 | 24.3 |
| Governmental Services Tax-Depreciation [8] | \$38.6 | (\$28.2) | (42.2) | \$20.3 | (\$18.3) | (47.5) | \$21.5 | \$1.2 | 6.1 | \$7.5 | \$0.4 | 5.3 |
| Business License Fee | \$104.9 | \$1.8 | 1.8 | \$109.3 | \$4.4 | 4.2 | \$110.3 | \$1.0 | 1.0 | \$38.4 | (\$5.4) | (12.3) |
| State Share Various Local SUT [1] | \$32.4 | \$2.1 | 7.0 | \$35.3 | \$2.9 | 9.0 | \$37.6 | \$2.3 | 6.5 | \$9.8 | \$0.7 | 7.3 |
| State Share LSST | \$10.6 | \$0.4 | 4.4 | \$11.1 | \$0.5 | 4.6 | \$11.9 | \$0.8 | 7.6 | \$3.1 | \$0.2 | 7.5 |
| Live Entertainment Tax - NonGaming [6] | \$27.0 | \$10.4 | 63.1 | \$24.5 | (\$2.4) | (9.0) | \$25.6 | \$1.1 | 4.5 | \$5.9 | \$0.5 | 8.7 |
| Quarterly Slot Tax [3, 9] | \$18.8 | (\$0.3) | (1.4) | \$18.8 | (\$0.0) | (0.2) | \$18.7 | (\$0.0) | (0.2) | \$3.9 | \$0.5 | 16.5 |
| Other General Fund Revenues | \$177.9 | \$0.9 | 0.5 | \$196.8 | \$18.9 | 10.6 | \$234.7 | \$37.9 | 19.3 | \$62.6 | (\$1.3) | (2.1) |
| Net Proceeds of Minerals | \$25.3 | (\$9.4) | (27.2) | \$63.5 | \$38.3 | 151.5 | \$50.3 | (\$13.2) | (20.8) | \$0.0 | \$0.0 | n/a |
| Unclaimed Property | \$25.9 | (\$13.1) | (33.6) | \$26.7 | \$0.9 | 3.3 | \$21.0 | (\$5.8) | (21.6) | \$0.0 | \$0.0 | n/a |
| Commerce Tax [10] | \$197.8 | \$54.3 | 37.9 | \$201.9 | \$4.1 | 2.1 | \$226.8 | \$24.8 | 12.3 | \$9.3 | (\$1.4) | (13.0) |
| Totals | \$3,880.5 | \$186.7 | 5.1 | \$4,018.7 | \$138.2 | 3.6 | \$4,287.5 | \$268.8 | 6.7 | \$1,168.4 | \$98.9 | 9.3 |

[1] Starting October 1, 2019, marketplace facilitators are required to collect and remit sales and use taxes on certain sales that are facilitated on behalf of the marketplace seller.

[2] Gaming Percentage Fees are reported in the month following the month of actual gaming activity.

[3] Amounts are reported quarterly.

[4] The rate for non-financial institutions is 1.475% on taxable wages that exceeded \$50,000 per quarter and the rate for entities subject to the net proceeds of minerals tax was increased to 2.0%, the same rate paid by financial

[5] Several tax credit programs that directly reduce the tax liability of a taxpayer and thereby decrease certain General Fund revenue collections. The amounts reflect Net tax collections (after Tax Credits are applied). See Page 3 for detailed tax credit program information.

[6] The tax rate for the live entertainment tax administered by the Gaming Control Board for live entertainment at licensed gaming establishments and the Department of Taxation for live entertainment at all non-gaming establishments is 9% tax rate for all venues over 200 people.

[7] A Transportation Connection Tax is equal to 3% of the fare charged to the passenger. The first \$5,000,000 collected in each biennium is required to be deposited to the Highway Fund with the remainder deposited to the General Fund.

[8] 25% of the proceeds from the 10% depreciation schedule change are deposited in the General Fund, with the remaining 75% deposited in the State Highway Fund.

[9] Starting July 1, 2019, the \$2 per slot machine collected from quarterly restricted and non-restricted slot machine fees is no longer allocated to the Account to Support Programs for the Prevention and Treatment of Problem Gambling.

[10] Commerce Tax is a levy on the gross revenue of a business which is earned in the State of Nevada effective July 1, 2015. The first \$4,000,000 per year in gross revenues earned in the State of Nevada is exempt from the tax. The rate varies based on the industry in which the business is primarily engaged with the industry groupings based on the North American Industry Classification System (NAICS) codes. Businesses which are required to pay the commerce tax are entitled to a credit of 50% of their commerce tax liability against their modified business tax.

State General Fund Revenues
Budgeted Amounts Based on May 2019 Economic Forum Forecast Adjusted for Legislative Actions

| | FY 2020 Budget | | | FY 2020 Collections vs Budget | | | | |
|--|------------------|----------------|------------|-------------------------------|------------------|-----------------|---------------------|--|
| | Total | Yr/Yr Change | | Through | Year-to-Date | | | |
| | | millions | millions | | % | Through | Over (Under) Budget | |
| | | | | | millions | millions | % | |
| General Fund Revenue Sources before Tax Credits | | | | | | | | |
| Sales Tax [1] | \$1,311.0 | \$75.8 | 6.1 | September | \$321.6 | (\$2.2) | (0.7) | |
| Gaming Percentage Fees Collections (Gross) [2, 5] | \$781.3 | \$29.1 | 3.9 | November | \$331.6 | \$11.6 | 3.6 | |
| Modified Business Tax - Financial, NonFinancial and Mining (Gross) [3, 4, 5] | \$725.9 | \$28.5 | 4.1 | September | \$174.4 | \$0.1 | 0.1 | |
| Insurance Premium Tax (Gross) [3, 5] | \$466.3 | \$24.1 | 5.5 | September | \$117.4 | \$2.2 | 1.9 | |
| Live Entertainment Tax - Gaming [6] | \$103.6 | (\$2.1) | (1.9) | October | \$38.0 | \$3.5 | 10.1 | |
| Cigarette Tax | \$156.7 | (\$7.7) | (4.7) | September | \$40.6 | \$1.3 | 3.4 | |
| Commercial Recordings | \$77.8 | \$1.6 | 2.2 | November | \$27.0 | (\$5.4) | (16.7) | |
| Real Property Transfer Tax | \$105.1 | \$4.0 | 4.0 | September | \$28.5 | \$0.2 | 0.7 | |
| Liquor Tax | \$45.7 | \$0.9 | 2.0 | September | \$11.1 | \$0.4 | 3.4 | |
| Transportation Connection Tax [7] | \$29.3 | (\$0.9) | (3.1) | September | \$3.0 | (\$4.1) | (57.6) | |
| Governmental Services Tax-Depreciation [8] | \$22.0 | \$0.5 | 2.2 | November | \$7.5 | (\$1.7) | (18.4) | |
| Business License Fee | \$113.0 | \$2.7 | 2.4 | November | \$38.4 | (\$8.7) | (18.4) | |
| State Share Various Local SUT [1] | \$40.5 | \$2.9 | 7.7 | September | \$9.8 | (\$0.1) | (1.0) | |
| State Share LSST | \$12.7 | \$0.8 | 6.6 | September | \$3.1 | (\$0.0) | (0.7) | |
| Live Entertainment Tax - NonGaming [6] | \$25.7 | \$0.1 | 0.4 | September | \$5.9 | (\$0.0) | (0.8) | |
| Quarterly Slot Tax [3, 9] | \$20.2 | \$1.4 | 7.6 | September | \$3.9 | (\$0.8) | (16.4) | |
| Other General Fund Revenues | \$215.8 | (\$18.9) | (8.0) | November | \$62.6 | (\$20.4) | (24.5) | |
| Net Proceeds of Minerals | \$53.4 | \$3.0 | 6.0 | n/a | n/a | n/a | n/a | |
| Unclaimed Property | \$25.9 | \$5.0 | 23.7 | n/a | n/a | n/a | n/a | |
| Commerce Tax [10] | \$222.5 | (\$4.3) | (1.9) | September | \$9.3 | \$9.3 | n/a | |
| Tax Credits | (\$107.9) | n/a | n/a | November | (\$65.4) | n/a | n/a | |
| Total Collections after Tax Credits | \$4,446.3 | \$158.8 | 3.7 | Various | \$1,168.4 | (\$14.8) | (1.2) | |

[1] Starting October 1, 2019, marketplace facilitators are required to collect and remit sales and use taxes on certain sales that are facilitated on behalf of the marketplace seller.

[2] Gaming Percentage Fees are reported in the month following the month of actual gaming activity.

[3] Amounts are reported quarterly.

[4] The rate for non-financial institutions is 1.475% on taxable wages that exceeded \$50,000 per quarter and the rate for entities subject to the net proceeds of minerals tax was increased to 2.0%, the same rate paid by financial institutions.

[5] Several tax credit programs that directly reduce the tax liability of a taxpayer and thereby decrease certain General Fund revenue collections. The amounts reflect Gross tax collections (before Tax Credits are applied). See Page 3 for detailed tax credit program information.

[6] The tax rate for the live entertainment tax administered by the Gaming Control Board for live entertainment at licensed gaming establishments and the Department of Taxation for live entertainment

[7] A Transportation Connection Tax is equal to 3% of the fare charged to the passenger. The first \$5,000,000 collected in each biennium is required to be deposited to the Highway Fund with the remainder deposited to the General Fund.

[8] 25% of the proceeds from the 10% depreciation schedule change are deposited in the General Fund, with the remaining 75% deposited in the State Highway Fund.

[9] Starting July 1, 2019, the \$2 per slot machine collected from quarterly restricted and non-restricted slot machine fees is no longer allocated to the Account to Support Programs for the Prevention and Treatment of Problem Gambling.

[10] Commerce Tax is a levy on the gross revenue of a business which is earned in the State of Nevada effective July 1, 2015. The first \$4,000,000 per year in gross revenues earned in the State of Nevada is exempt from the tax. The rate varies based on the industry in which the business is primarily engaged with the industry groupings based on the North American Industry Classification System (NAICS) codes. Businesses which are required to pay the commerce tax are entitled to a credit of 50% of their commerce tax liability against their modified business tax.

FY 2020 Tax Credit Summary

| Year-to-Date | Revenues Impacted by Tax Credits | | | | | | Sub-totals by Tax Credit Type | |
|-------------------------------------|----------------------------------|--------------|--------------|----------------|----------------|-----------------|-------------------------------|------------------------------------|
| | Modified Business Tax | | | | Insurance | Gaming | Redeemed FY 2020 | Economic Forum FY 2020 Forecast |
| | Non-Financial | Financial | Mining | Total | Premium Tax | Percentage Fees | | |
| Tax Credit Type | | | | | | | | |
| Film | \$ - | \$ - | \$ - | \$ - | \$ - | \$ 524,587 | \$ 524,587 | \$ 5,000,000 |
| Economic Development | \$ - | \$ - | \$ - | \$ - | \$ - | \$ 21,912,501 | \$ 21,912,501 | \$ 21,912,500 |
| Catalyst Account | \$ - | \$ - | \$ - | \$ - | \$ - | \$ - | \$ - | \$ 3,247,500 |
| Education Choice | \$ 4,053,949 | \$ - | \$ - | \$ 4,053,949 | | | \$ 4,053,949 | \$ 11,400,000 |
| College Savings | \$ - | \$ - | \$ - | \$ - | | | \$ - | \$ 50,000 |
| New Markets | | | | | \$ 5,670,980 | | \$ 5,670,980 | \$ 7,195,974 |
| Affordable Housing | \$ - | \$ - | \$ - | \$ - | \$ - | \$ - | \$ - | \$ - |
| Commerce Tax | \$ 33,032,911 | \$ 134,607 | \$ 37,692 | \$ 33,205,210 | | | \$ 33,205,210 | \$ 59,128,000 |
| Sub-totals by Revenue Source | | | | | | | | |
| Redeemed | \$ 37,086,860 | \$ 134,607 | \$ 37,692 | \$ 37,259,160 | \$ 5,670,980 | \$ 22,437,088 | \$ 65,367,228 | \$ 107,933,974 |
| Revenue Source | | | | | | | | |
| Gross | \$ 162,078,894 | \$ 7,270,224 | \$ 5,060,447 | \$ 174,409,565 | \$ 117,402,634 | \$ 331,627,247 | | |
| Credits | \$ 37,086,860 | \$ 134,607 | \$ 37,692 | \$ 37,259,160 | \$ 5,670,980 | \$ 22,437,088 | | |
| Collections Net of Credits | \$ 124,992,034 | \$ 7,135,617 | \$ 5,022,755 | \$ 137,150,405 | \$ 111,731,654 | \$ 309,190,159 | | |

Transferable Film Tax Credit Program: The 2013 Regular Session of the State Legislature authorized a four-year pilot program of transferable tax credits issued for qualified film productions completed in the State that may be used against the modified business tax, insurance premium tax and/or the gaming percentage fee tax. The legislation authorized up to \$20 million per fiscal year for a total of \$80 million. However, the provisions of the pilot program were amended in the 2014 Special Session of the State Legislature, reducing the total amount of credits that may be approved to \$10 million. The 2015 Regular Session of the State Legislature made the transferable film tax credit program permanent but limited the amount of transferable tax credits to the amount appropriated by the State Legislature for that purpose for that fiscal year. The 2015 Regular Session of the State Legislature did not appropriate additional funding for this program for either FY 2016 or FY 2017. The 2017 Regular Session of the State Legislature authorized a total of \$10 million per year in film tax credits may be awarded beginning in FY 2018, in addition to any remaining amounts from the 2014 Special Session. Any portion of the \$10 million per fiscal year that is not approved by GOED may be carried forward and made available during the next or any future fiscal year.

Economic Development Transferable Tax Credits Program: The 2014 Special Session of the State Legislature required the Governor's Office of Economic Development (GOED) to issue transferable tax credits for certain qualifying projects that may be used against the modified business tax, insurance premium tax and/or the gaming percentage fee tax. A qualifying project is required to be located within the geographical borders of the State of Nevada, make a total new capital investment in the State of at least \$3.5 billion during the 10-year period immediately following approval of the application, and employ Nevada residents in at least half of the project's construction jobs and operational jobs. The amount of transferable tax credits is equal to \$12,500 for each qualified employee employed by the participants in the project (to a maximum of 6,000 employees), plus 5% of the first \$1 billion and 2.8% of the next \$2.5 billion in new capital investment in the State made collectively by the participants in the qualifying project. The amount of tax credits approved by GOED may not exceed \$45 million per fiscal year (although any unissued credits may be issued in a subsequent fiscal year), and GOED may not issue total tax credits in excess of \$195 million, reflecting the maximum amounts of credits approved for the Tesla project. The program will expire on June 30, 2036. The 2015 Special Session authorizes the Governor's Office of Economic Development to issue transferable tax credits that may be used against the Modified Business Tax, Insurance Premium Tax, and the Gaming Percentage Fee Tax for certain qualified projects. The amount of transferable tax credits are equal to \$9,500 for each qualified employee employed by the participants in the project, to a maximum of 4,000 employees. The amount of credits approved by GOED may not exceed \$7.6 million per fiscal year (though any unissued credits may be issued in subsequent fiscal years), and GOED may not issue total credits in excess of \$38 million. The forecast shown does not include any credits issued under these provisions, as there are currently no qualifying projects receiving these credits.

Catalyst Account Transferable Tax Credit Program: The 2015 Regular Session of the State Legislature authorized the Governor's Office of Economic Development (GOED) to approve transferable tax credits that may be used against the modified business tax, insurance premium tax and gaming percentage fee tax to new or expanding businesses to promote the economic development of Nevada. The total amount of transferable tax credits that may be issued is \$500,000 in FY 2016, \$2 million in FY 2017 and \$5 million in each fiscal year thereafter. The 2015 Special Session reduced the total amount of transferable tax credits that may be issued by GOED to zero in FY 2016, \$1 million in FY 2017, \$2 million per year in FY 2018 and FY 2019, and \$3 million in FY 2020. For FY 2021 and future fiscal years, the amount of credits that may be issued by GOED remains at \$5 million per year.

Nevada Educational Choice Scholarship Tax Credit Program: The 2015 Regular Session of the State Legislature authorized a taxpayer who makes a donation of money to certain scholarship organizations to receive a dollar-for-dollar credit against the taxpayer's liability for the modified business tax. The total amount of tax credits that may be approved by the Department of Taxation for this program is \$5 million in FY 2016, \$5.5 million in FY 2017 and 110% of the total amount of credits authorized in the previous year for all subsequent fiscal years. The 2017 Regular Session of the State Legislature authorized an additional \$20 million in credits against the modified business tax under this program in FY 2018 beyond those that were authorized under previous provisions. The 2019 Regular Session of the State Legislature eliminated the 10% increase in the amount of credits that may be authorized in each year, capping the total amount that may be authorized in each year at \$6,655,000 beginning FY 2020 and clarified that the \$6,655,000 limit per year applies to the combined credits that may be taken under both chapters of the MBT (Chapters 363A and 363B), rather than as a separate limit for each chapter. In addition, the 2019 Regular Session of the State Legislature authorized an additional \$4,745,000 in credits against the MBT (Chapters 363A and 363B combined) under this program per year in FY 2020 and FY 2021 beyond those that were authorized and any amount of the credits that is not approved in each fiscal year may be issued in future fiscal year.

College Savings Plan Employer Matching Employee Contribution Tax Credit Program: The 2015 Regular Session of the State Legislature authorized a tax credit against the modified business tax to certain employers who match the contributions of an employee to one of the college savings plans offered through the Nevada Higher Education Prepaid Tuition Program and/or the Nevada College Savings Program. The provisions relating to the Nevada College Savings Program are effective January 1, 2016 and provisions relating to the Higher Education Prepaid Tuition Program are effective July 1, 2016. The amount of the tax credit is equal to 25% of the matching contribution, not to exceed \$500 per contributing employee per year, and any unused credits may be carried forward for up to 5 years.

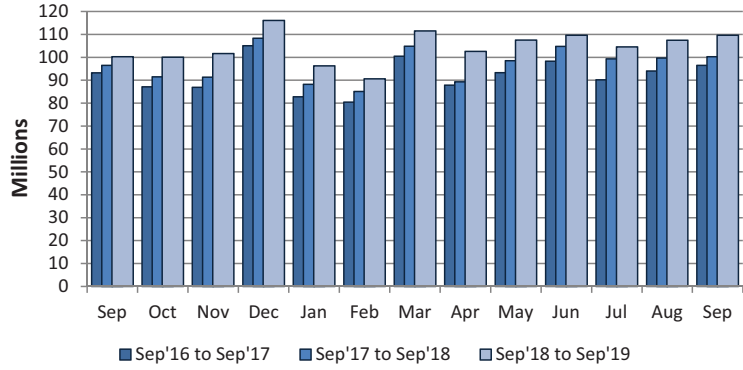
Nevada New Markets Jobs Act Tax Credit Program: The 2013 Regular Session of the State Legislature authorized the Nevada New Market Jobs Act which allows insurance companies to receive a credit against the insurance premium tax in exchange for a qualified equity investment in one or more community development organizations, primarily for local or minority-owned entities in under-served zones in the State. The State Department of Business and Industry may certify up to \$200 million in qualified equity investments. In exchange for making the qualified equity investment, insurance companies are entitled to receive a credit against the insurance premium tax in an amount equal to 58% of the total qualified equity investment certified by the Department of Business and Industry. The credits may be taken in increments beginning on the second anniversary date of the original investment, as follows:

- 2 years after the investment is made: 12 percent of the qualified investment
- 3 years after the investment is made: 12 percent of the qualified investment
- 4 years after the investment is made: 12 percent of the qualified investment
- 5 years after the investment is made: 11 percent of the qualified investment
- 6 years after the investment is made: 11 percent of the qualified investment

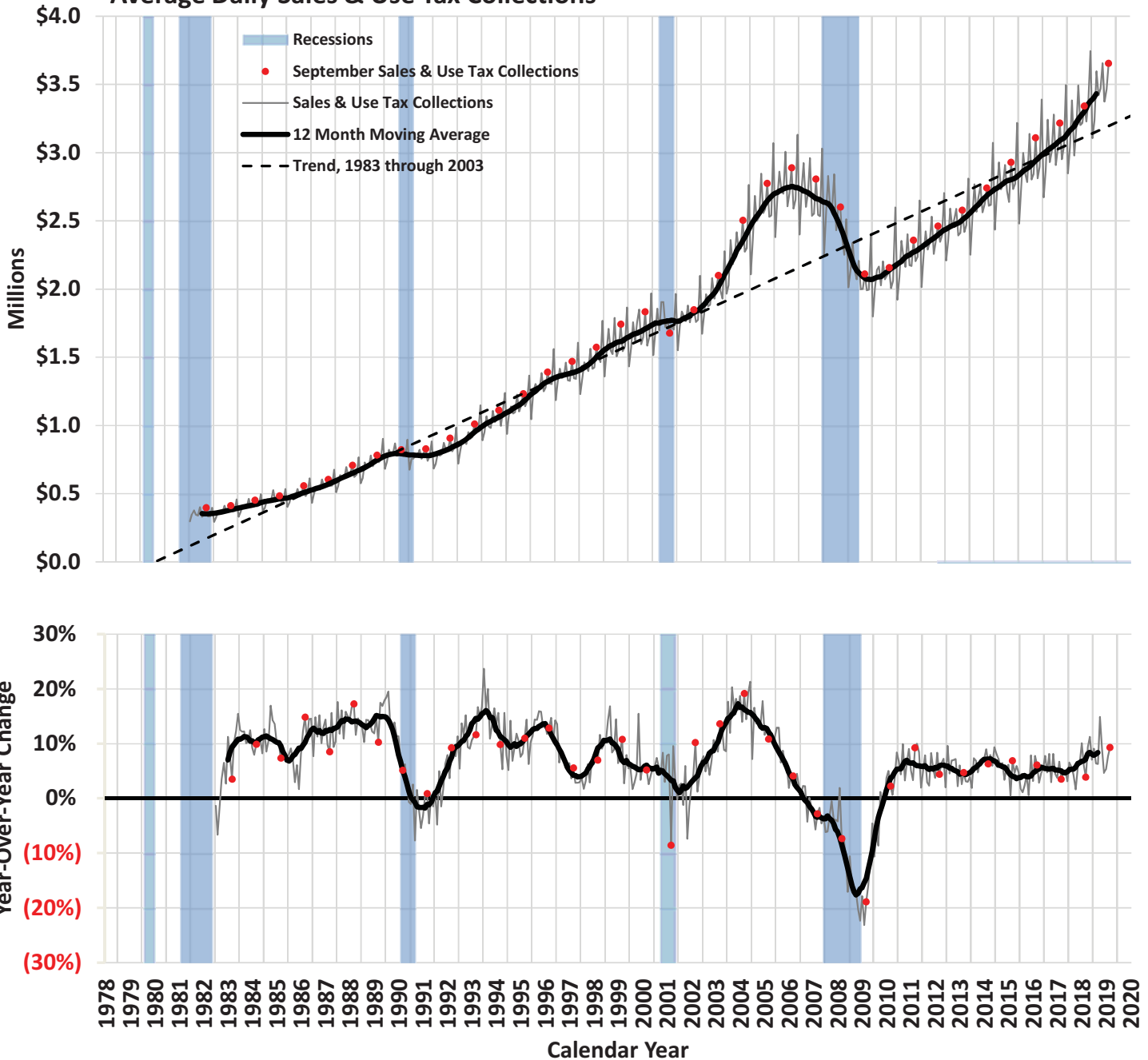
The 2019 Regular Session of the State Legislature authorized an additional \$200 million in qualified equity investments that may be certified by the Department of Business and Industry, effective July 1, 2019, with a total of \$116 million of credits that may be taken based on the increment percentages initially approved by the 2013 Regular Session of the State Legislature. However, none of these credits can be taken against the Insurance Premium Tax before July 1, 2021.

2% General Fund Sales & Use Tax Collections

| | Total | Year/Year Change | |
|----------------|------------|------------------|------|
| | (millions) | (millions) | % |
| September 2018 | \$100.3 | \$3.7 | 3.9 |
| October 2018 | 100.1 | 8.6 | 9.4 |
| November 2018 | 101.6 | 10.2 | 11.2 |
| December 2018 | 116.0 | 7.7 | 7.1 |
| January 2019 | 96.2 | 8.0 | 9.1 |
| February 2019 | 90.6 | 5.5 | 6.4 |
| March 2019 | 111.5 | 6.6 | 6.3 |
| April 2019 | 102.6 | 13.3 | 14.9 |
| May 2019 | 107.5 | 9.0 | 9.1 |
| June 2019 | 109.7 | 4.9 | 4.7 |
| July 2019 | 104.6 | 5.3 | 5.3 |
| August 2019 | 107.4 | 7.7 | 7.7 |
| September 2019 | 109.6 | 9.4 | 9.3 |



Average Daily Sales & Use Tax Collections



*Reported values exclude amounts collected under state tax amnesty programs.

Statewide Taxable Sales & Use by Industry

| | Food Services & Drinking Places (722) | | | | Miscellaneous Retail & Non-Retail Stores (442, 443, 447, 451, 453, 454) | | | | Motor Vehicle & Parts Dealers (441) | | | | Wholesale Trade (423-425) | | | |
|----------------|--|-------|----------------|------|---|------|----------------|------|--|-------|----------------|------|------------------------------|-------|----------------|------|
| | Year/Year Change | | Share of Total | | Year/Year Change | | Share of Total | | Year/Year Change | | Share of Total | | Year/Year Change | | Share of Total | |
| | (millions) | % | % | Rank | (millions) | % | % | Rank | (millions) | % | % | Rank | (millions) | % | % | Rank |
| September 2018 | (\$28.2) | (2.6) | 20.8 | 1 | \$40.2 | 7.5 | 11.3 | 3 | \$10.7 | 1.8 | 11.6 | 2 | \$1.6 | 0.3 | 9.3 | 4 |
| October 2018 | 2.3 | 0.2 | 20.6 | 1 | 52.7 | 10.5 | 10.9 | 3 | 24.2 | 4.4 | 11.2 | 2 | 44.6 | 9.9 | 9.7 | 4 |
| November 2018 | 66.7 | 7.1 | 19.8 | 1 | 76.6 | 12.9 | 13.1 | 2 | 36.7 | 7.0 | 11.0 | 3 | 7.4 | 1.6 | 9.1 | 5 |
| December 2018 | 53.4 | 5.7 | 16.8 | 1 | 20.2 | 2.7 | 12.8 | 2 | 38.9 | 6.9 | 10.2 | 4 | 8.6 | 1.7 | 8.6 | 5 |
| January 2019 | (18.8) | (1.8) | 20.7 | 1 | 52.8 | 10.3 | 11.7 | 2 | 9.3 | 1.8 | 11.0 | 3 | 78.0 | 18.6 | 10.3 | 4 |
| February 2019 | 16.8 | 1.8 | 21.0 | 1 | 41.3 | 8.5 | 11.6 | 2 | 0.7 | 0.1 | 11.3 | 3 | 22.5 | 5.2 | 10.1 | 4 |
| March 2019 | 15.7 | 1.4 | 20.4 | 1 | 58.6 | 10.1 | 11.3 | 3 | 16.1 | 2.5 | 11.6 | 2 | (6.1) | (1.1) | 9.5 | 4 |
| April 2019 | (23.9) | (2.2) | 20.4 | 1 | 75.3 | 14.7 | 11.4 | 3 | 33.8 | 5.9 | 11.8 | 2 | (0.0) | (0.0) | 10.1 | 4 |
| May 2019 | 17.9 | 1.6 | 20.9 | 1 | 67.3 | 12.6 | 11.1 | 3 | 104.4 | 18.8 | 12.1 | 2 | 33.7 | 6.8 | 9.8 | 4 |
| June 2019 | 5.7 | 0.5 | 19.3 | 1 | 53.4 | 9.3 | 11.1 | 2 | (45.5) | (6.9) | 10.9 | 3 | 35.9 | 7.0 | 9.7 | 4 |
| July 2019 | 259.2 | 31.8 | 20.5 | 1 | 48.2 | 8.8 | 11.4 | 3 | (7.8) | (1.2) | 11.8 | 2 | 77.2 | 16.6 | 10.4 | 4 |
| August 2019 | 82.8 | 8.4 | 19.7 | 1 | 53.1 | 9.7 | 11.1 | 3 | 41.3 | 6.4 | 12.7 | 2 | 38.1 | 7.6 | 9.9 | 4 |
| September 2019 | 23.5 | 2.2 | 19.4 | 1 | 90.1 | 15.7 | 11.9 | 2 | 4.0 | 0.7 | 10.7 | 3 | 68.3 | 14.5 | 9.7 | 4 |

H0: change>0*** No Yes No No

| | General Merchandise Stores (452) | | | | Manufacturing (311-339) | | | | Information, Financial, Insurance, Real Estate, Renting & Leasing (511-533) | | | | Clothing & Clothing Accessories Stores (448) | | | |
|----------------|-------------------------------------|-------|----------------|------|----------------------------|------|----------------|------|---|--------|----------------|------|--|--------|----------------|------|
| | Year/Year Change | | Share of Total | | Year/Year Change | | Share of Total | | Year/Year Change | | Share of Total | | Year/Year Change | | Share of Total | |
| | (millions) | % | % | Rank | (millions) | % | % | Rank | (millions) | % | % | Rank | (millions) | % | % | Rank |
| September 2018 | \$9.3 | 2.3 | 8.0 | 5 | \$45.3 | 17.2 | 6.1 | 7 | (\$40.8) | (12.6) | 5.6 | 8 | (\$3.8) | (1.2) | 6.4 | 6 |
| October 2018 | 18.4 | 4.9 | 7.7 | 5 | 55.3 | 20.6 | 6.4 | 7 | 33.8 | 11.4 | 6.5 | 6 | 13.3 | 4.7 | 5.9 | 8 |
| November 2018 | 50.8 | 11.3 | 9.8 | 4 | 20.9 | 8.2 | 5.4 | 7 | (1.3) | (0.5) | 5.4 | 8 | 23.5 | 7.0 | 7.1 | 6 |
| December 2018 | 14.4 | 2.4 | 10.3 | 3 | 69.9 | 22.2 | 6.5 | 7 | (2.9) | (0.8) | 5.9 | 8 | 4.9 | 1.1 | 7.7 | 6 |
| January 2019 | (9.8) | (2.8) | 7.1 | 6 | 48.6 | 19.6 | 6.1 | 7 | 86.2 | 32.6 | 7.3 | 5 | (42.0) | (14.9) | 5.0 | 8 |
| February 2019 | 3.2 | 0.9 | 7.8 | 5 | 49.9 | 21.2 | 6.2 | 6 | 7.0 | 2.6 | 6.0 | 7 | (16.0) | (5.7) | 5.9 | 8 |
| March 2019 | (4.2) | (1.0) | 7.8 | 5 | 52.1 | 16.7 | 6.5 | 6 | (45.2) | (12.2) | 5.8 | 8 | 11.2 | 3.6 | 5.7 | 8 |
| April 2019 | 24.8 | 6.6 | 7.8 | 5 | 58.4 | 19.8 | 6.8 | 6 | (10.3) | (3.6) | 5.2 | 9 | 17.5 | 6.3 | 5.7 | 7 |
| May 2019 | 7.9 | 2.0 | 7.6 | 5 | 53.1 | 17.1 | 6.7 | 6 | (1.6) | (0.6) | 5.1 | 8 | 18.1 | 5.8 | 6.0 | 7 |
| June 2019 | 17.8 | 4.3 | 7.7 | 5 | 35.2 | 10.8 | 6.4 | 6 | 6.0 | 2.0 | 5.5 | 9 | 3.9 | 1.3 | 5.6 | 7 |
| July 2019 | 13.2 | 3.4 | 7.7 | 5 | 63.8 | 22.2 | 6.7 | 6 | (16.2) | (5.1) | 5.8 | 8 | 7.2 | 2.4 | 5.9 | 7 |
| August 2019 | 11.5 | 2.8 | 7.8 | 5 | 46.2 | 15.5 | 6.3 | 7 | 88.7 | 31.2 | 6.9 | 6 | 7.9 | 2.7 | 5.5 | 8 |
| September 2019 | 10.6 | 2.6 | 7.5 | 5 | 105.9 | 34.3 | 7.4 | 6 | 64.7 | 22.8 | 6.3 | 7 | (5.1) | (1.6) | 5.7 | 9 |

H0: change>0*** Yes Yes No Yes

| | Building Material & Garden Equipment & Supplies (444) | | | | Food & Beverage Stores (445) | | | | Construction (236-238) | | | | Arts, Entertainment, Recreation & Accommodation (710-721) | | | |
|----------------|---|-------|----------------|------|---------------------------------|-------|----------------|------|---------------------------|--------|----------------|------|---|--------|----------------|------|
| | Year/Year Change | | Share of Total | | Year/Year Change | | Share of Total | | Year/Year Change | | Share of Total | | Year/Year Change | | Share of Total | |
| | (millions) | % | % | Rank | (millions) | % | % | Rank | (millions) | % | % | Rank | (millions) | % | % | Rank |
| September 2018 | \$14.4 | 6.6 | 4.6 | 9 | (\$6.5) | (4.2) | 2.9 | 10 | \$44.3 | 43.4 | 2.9 | 11 | \$67.4 | 146.5 | 2.2 | 12 |
| October 2018 | 20.6 | 9.1 | 4.8 | 9 | 11.3 | 7.8 | 3.1 | 10 | 56.4 | 59.2 | 3.0 | 11 | 79.1 | 191.9 | 2.4 | 12 |
| November 2018 | 13.5 | 6.3 | 4.5 | 9 | 3.1 | 2.1 | 3.0 | 10 | 18.1 | 19.8 | 2.1 | 11 | 55.6 | 113.8 | 2.0 | 12 |
| December 2018 | 12.4 | 5.8 | 3.9 | 9 | 9.5 | 4.6 | 3.6 | 10 | 54.3 | 49.4 | 2.8 | 11 | 61.3 | 121.4 | 1.9 | 13 |
| January 2019 | 13.7 | 6.7 | 4.5 | 9 | 0.5 | 0.3 | 3.1 | 10 | 44.2 | 51.4 | 2.7 | 11 | 27.7 | 36.9 | 2.1 | 12 |
| February 2019 | (2.6) | (1.3) | 4.1 | 9 | 0.5 | 0.3 | 3.2 | 10 | 14.5 | 15.8 | 2.3 | 11 | 36.6 | 55.5 | 2.2 | 12 |
| March 2019 | 18.6 | 8.2 | 4.3 | 9 | 7.0 | 4.4 | 2.9 | 10 | 27.8 | 24.5 | 2.5 | 11 | 27.3 | 28.0 | 2.2 | 12 |
| April 2019 | 18.8 | 7.1 | 5.5 | 8 | 2.5 | 1.7 | 3.0 | 10 | 14.3 | 12.9 | 2.4 | 11 | 29.8 | 34.8 | 2.2 | 12 |
| May 2019 | 8.7 | 3.5 | 4.8 | 9 | 1.6 | 0.9 | 3.1 | 10 | 17.8 | 15.3 | 2.5 | 11 | 46.0 | 52.5 | 2.5 | 12 |
| June 2019 | 7.3 | 2.8 | 4.7 | 10 | (3.4) | (2.1) | 2.9 | 11 | 134.9 | 101.6 | 4.7 | 9 | 49.1 | 64.3 | 2.2 | 12 |
| July 2019 | 8.2 | 3.2 | 5.0 | 9 | (0.8) | (0.5) | 3.2 | 10 | (56.2) | (42.1) | 1.5 | 13 | (217.6) | (64.7) | 2.3 | 11 |
| August 2019 | 1.2 | 0.5 | 4.3 | 9 | (4.3) | (2.6) | 2.9 | 10 | (13.9) | (8.6) | 2.7 | 11 | (18.2) | (12.7) | 2.3 | 12 |
| September 2019 | 6.6 | 2.8 | 4.3 | 10 | 11.1 | 7.5 | 2.9 | 12 | 30.7 | 21.0 | 3.2 | 11 | 10.3 | 9.1 | 2.2 | 13 |

H0: change>0*** Yes No No No

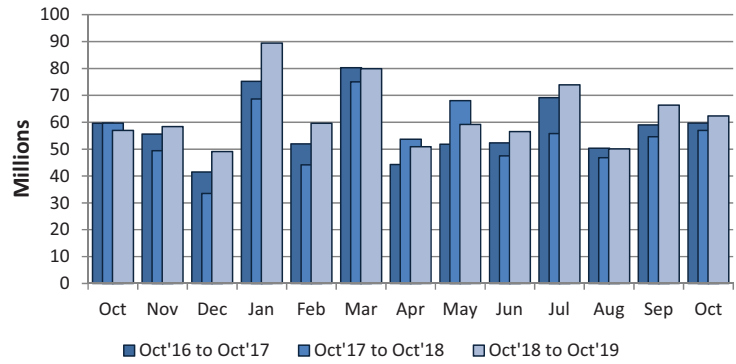
| | Health & Personal Care Stores (446) | | | | Natural Resources & Utilities* (111-221) | | | | Transportation & Warehousing (481-493) | | | | Other Services**, Public Administration & Miscellaneous (541-624, 811-999) | | | |
|----------------|--|------|----------------|------|---|--------|----------------|------|---|--------|----------------|------|---|--------|----------------|------|
| | Year/Year Change | | Share of Total | | Year/Year Change | | Share of Total | | Year/Year Change | | Share of Total | | Year/Year Change | | Share of Total | |
| | (millions) | % | % | Rank | (millions) | % | % | Rank | (millions) | % | % | Rank | (millions) | % | % | Rank |
| September 2018 | \$6.3 | 7.1 | 1.9 | 13 | \$3.3 | 8.6 | 0.8 | 14 | \$0.3 | 1.4 | 0.4 | 15 | (\$41.4) | (13.4) | 5.3 | 9 |
| October 2018 | 5.1 | 6.0 | 1.8 | 13 | (7.8) | (18.7) | 0.7 | 14 | 3.8 | 18.7 | 0.5 | 15 | 16.4 | 6.8 | 5.0 | 9 |
| November 2018 | 10.5 | 12.2 | 1.9 | 13 | 5.9 | 21.3 | 0.7 | 14 | 9.7 | 48.6 | 0.6 | 15 | 2.7 | 1.2 | 4.5 | 9 |
| December 2018 | 5.3 | 4.6 | 2.0 | 12 | 23.5 | 66.6 | 1.0 | 14 | (1.7) | (5.7) | 0.5 | 15 | (21.8) | (6.2) | 5.6 | 9 |
| January 2019 | 2.8 | 3.3 | 1.8 | 13 | 6.4 | 18.5 | 0.8 | 14 | 3.6 | 19.6 | 0.5 | 15 | 43.7 | 20.0 | 5.4 | 8 |
| February 2019 | 4.0 | 4.9 | 1.9 | 13 | 1.9 | 6.1 | 0.7 | 14 | 2.3 | 13.9 | 0.4 | 15 | 26.6 | 12.5 | 5.2 | 9 |
| March 2019 | 16.7 | 17.1 | 2.0 | 13 | 13.8 | 36.3 | 0.9 | 14 | 3.6 | 17.4 | 0.4 | 15 | 2.4 | 0.7 | 6.0 | 7 |
| April 2019 | 7.0 | 7.8 | 1.9 | 13 | (10.2) | (18.5) | 0.9 | 14 | (2.4) | (10.4) | 0.4 | 15 | (9.7) | (4.0) | 4.5 | 10 |
| May 2019 | 13.5 | 14.9 | 1.9 | 13 | 10.3 | 26.3 | 0.9 | 14 | 3.6 | 12.2 | 0.6 | 15 | (13.4) | (5.3) | 4.4 | 10 |
| June 2019 | 6.0 | 6.2 | 1.8 | 13 | 13.1 | 26.9 | 1.1 | 14 | (5.1) | (20.8) | 0.3 | 15 | 5.2 | 1.6 | 5.9 | 7 |
| July 2019 | 6.3 | 7.2 | 1.8 | 12 | (2.4) | (4.4) | 1.0 | 14 | 13.0 | 57.8 | 0.7 | 15 | (10.1) | (4.4) | 4.2 | 10 |
| August 2019 | 8.3 | 9.6 | 1.7 | 13 | 3.8 | 9.8 | 0.8 | 14 | 13.9 | 63.9 | 0.7 | 15 | 22.5 | 9.9 | 4.6 | 9 |
| September 2019 | 0.6 | 0.6 | 1.7 | 14 | 9.8 | 23.2 | 0.9 | 15 | 10.8 | 58.0 | 0.5 | 16 | 53.0 | 19.8 | 5.8 | 8 |

H0: change>0*** Yes No No No

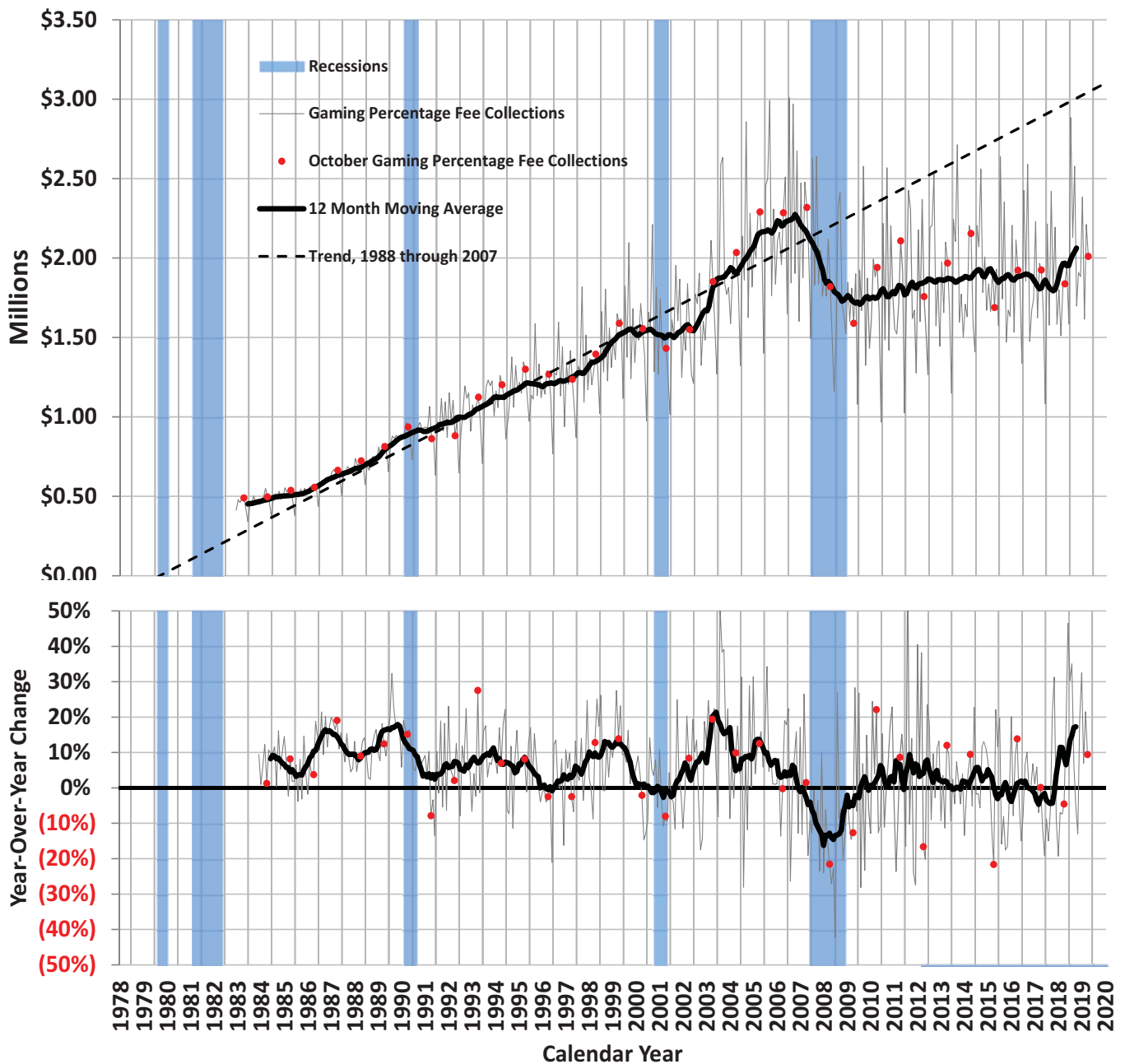
* Statistically significant outliers in most recent month's data
 ** Other Services includes Professional, Management, Administration, Education and Health Services.

Gaming Percentage Fees Collections

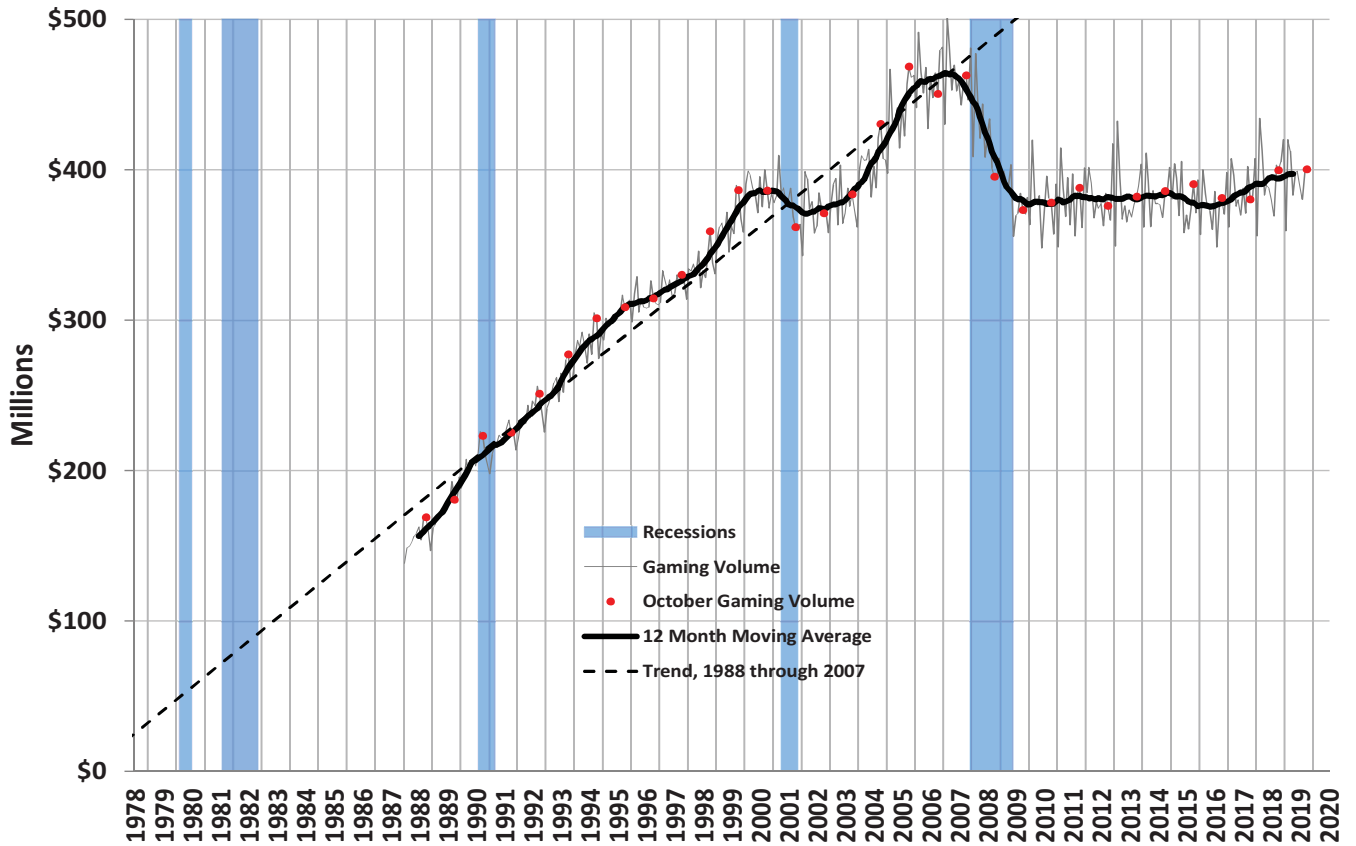
| Business Period | Total | Year/Year Change | |
|-----------------|------------|------------------|--------|
| | (millions) | (millions) | % |
| October 2018 | \$57.0 | (\$2.7) | (4.6) |
| November 2018 | 58.4 | 8.9 | 18.1 |
| December 2018 | 49.1 | 15.6 | 46.5 |
| January 2019 | 89.4 | 20.8 | 30.3 |
| February 2019 | 59.6 | 15.5 | 35.0 |
| March 2019 | 80.0 | 4.9 | 6.6 |
| April 2019 | 50.9 | (2.7) | (5.1) |
| May 2019 | 59.2 | (8.8) | (13.0) |
| June 2019 | 56.5 | 9.0 | 19.0 |
| July 2019 | 73.9 | 18.1 | 32.5 |
| August 2019 | 50.1 | 3.2 | 6.9 |
| September 2019 | 66.4 | 11.7 | 21.5 |
| October 2019 | 62.3 | 5.4 | 9.4 |



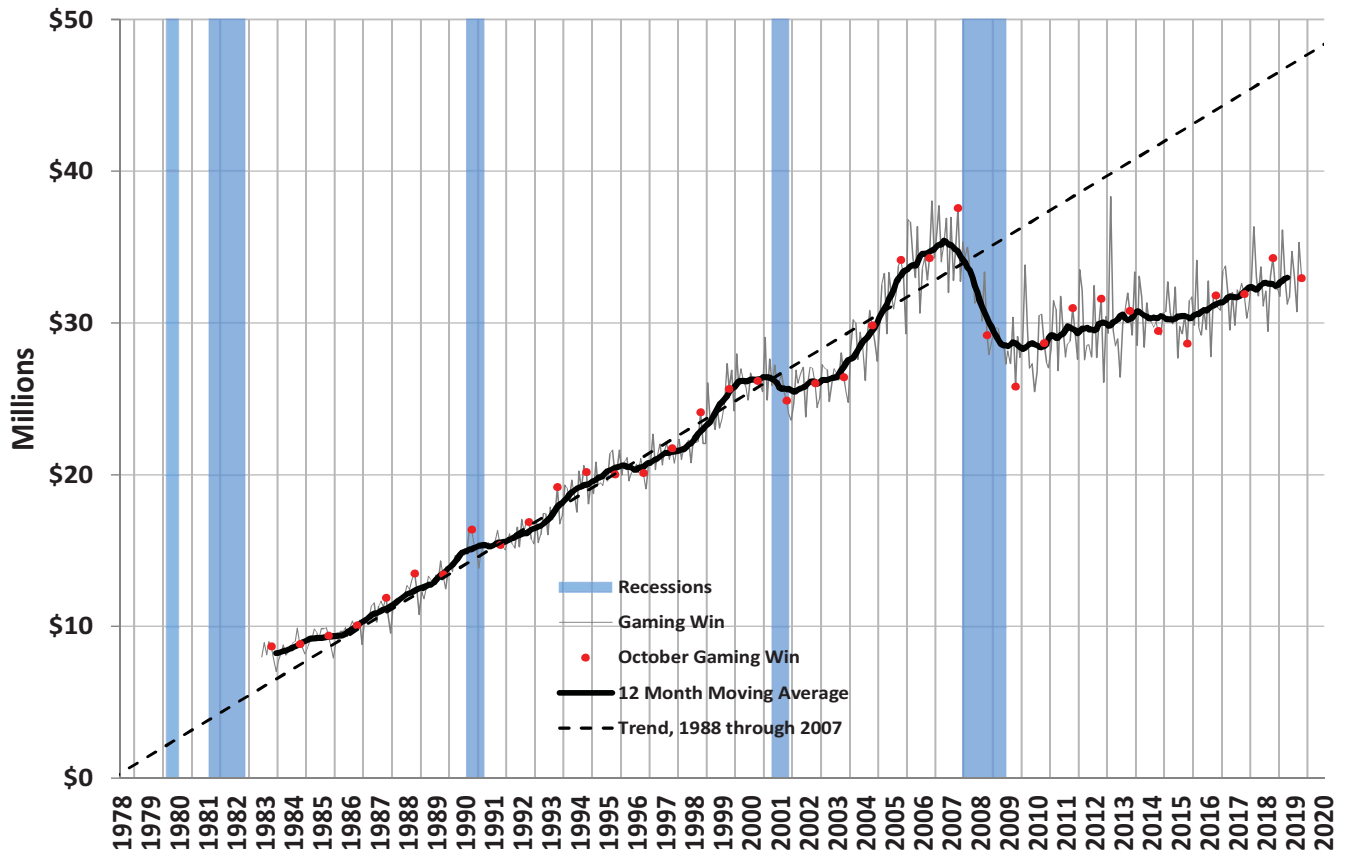
Average Daily Gaming Percentage Fee Collections



Average Daily Gaming Volume

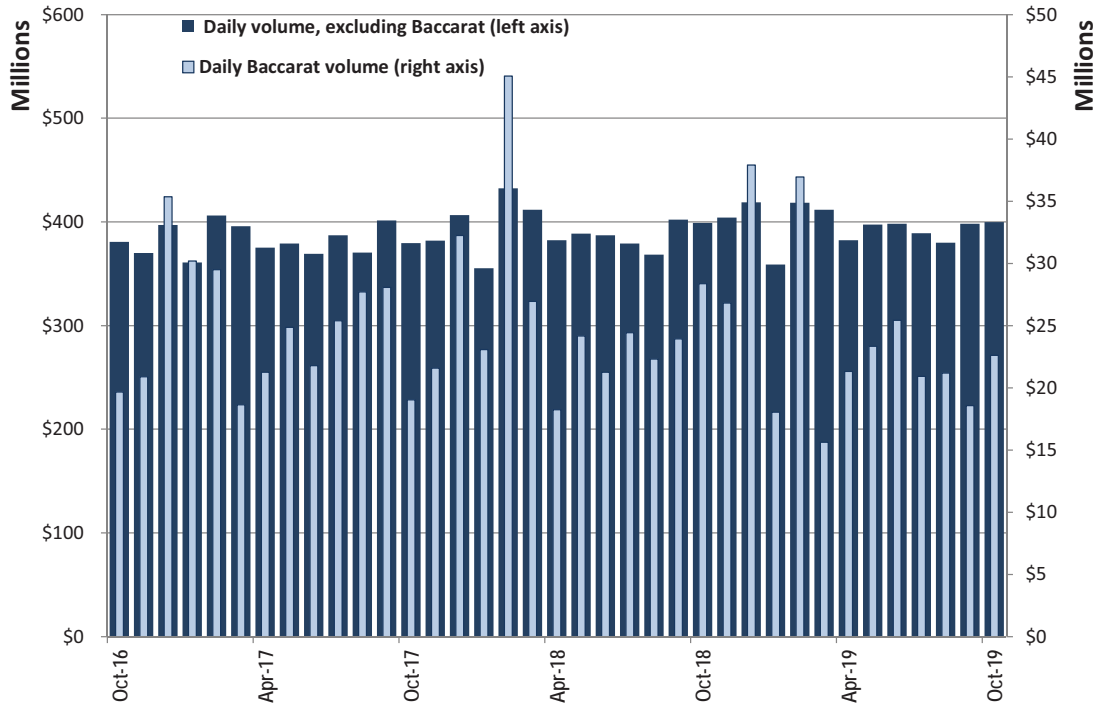


Average Daily Gaming Win

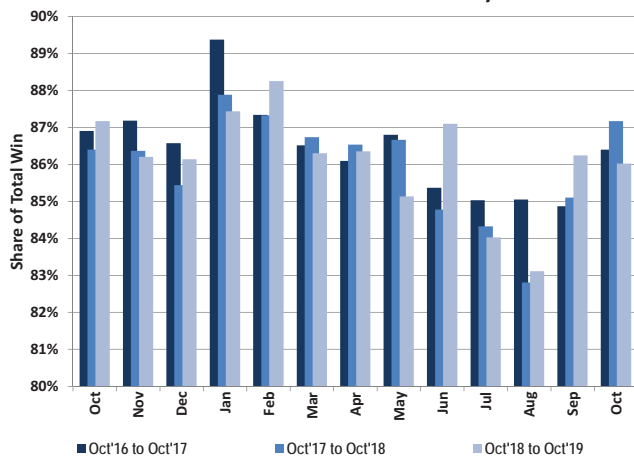


| Statewide Gaming Activity | | | | | | | | | | |
|---------------------------|-----------------|-----------------|--------------------------|-----------------|-----------------|-----------------|------------|-----------|-----------------------|------------------------|
| Date | Slots | | Games Excluding Baccarat | | Baccarat | | Tables Win | Total Win | Taxable Gross Revenue | Pct. Fee due after EFA |
| | Coin-In | Win | Volume | Win | Volume | Win | | | | |
| | Yr/Yr Pct. Chg. | Yr/Yr Pct. Chg. | Yr/Yr Pct. Chg. | Yr/Yr Pct. Chg. | Yr/Yr Pct. Chg. | Yr/Yr Pct. Chg. | | | | |
| Oct-17 | 0.4 | 3.9 | (2.7) | (8.5) | (3.3) | 0.6 | 0.3 | 0.3 | 8.4 | 17.8 |
| Nov-17 | 3.7 | 3.6 | 0.8 | (9.9) | 3.2 | (23.5) | 0.4 | (2.3) | 0.1 | (8.0) |
| Dec-17 | 4.3 | 5.9 | (1.1) | 10.6 | (8.8) | (30.3) | 1.6 | 0.4 | (3.4) | (16.3) |
| Jan-18 | 1.6 | 3.3 | (5.3) | 1.0 | (23.5) | (28.3) | (0.1) | (2.0) | 11.1 | 11.5 |
| Feb-18 | 3.4 | 4.2 | 1.1 | (12.0) | 52.8 | 80.1 | 1.2 | 7.7 | (6.6) | (13.1) |
| Mar-18 | 1.9 | (1.9) | 3.2 | (5.2) | 44.7 | 100.6 | 5.5 | 3.4 | (1.6) | (0.6) |
| Apr-18 | 2.0 | 10.1 | 8.4 | 10.5 | (14.1) | (17.7) | (1.7) | 7.6 | 15.4 | 24.5 |
| May-18 | 2.3 | 3.5 | 5.8 | 4.1 | (2.8) | 19.8 | 2.8 | 5.3 | (0.3) | 5.2 |
| Jun-18 | 5.0 | (1.2) | 7.2 | 17.3 | (2.6) | 10.4 | 4.8 | 4.2 | 2.7 | 8.3 |
| Jul-18 | (2.3) | 5.4 | 0.7 | (7.3) | (3.9) | (16.4) | (4.0) | (0.3) | 4.4 | (5.1) |
| Aug-18 | 3.7 | (1.0) | (13.1) | (24.1) | (19.5) | (8.7) | 3.7 | (7.7) | (2.9) | (5.1) |
| Sep-18 | 0.9 | 7.1 | 3.3 | (0.9) | (14.8) | (27.5) | (2.4) | 1.3 | (5.6) | (13.2) |
| Oct-18 | 2.4 | 5.8 | 5.0 | 20.1 | 49.3 | (13.0) | (0.1) | 7.5 | (5.4) | (14.0) |
| Nov-18 | 5.1 | 1.3 | 3.4 | 8.2 | 24.3 | 50.6 | 1.0 | 6.4 | 0.9 | 4.7 |
| Dec-18 | 0.9 | 9.7 | 7.1 | 0.2 | 17.6 | (14.6) | 3.5 | 4.1 | 10.7 | 41.8 |
| Jan-19 | 2.2 | 0.5 | 4.2 | (7.1) | (21.8) | (15.3) | 6.5 | (3.0) | 1.4 | 8.0 |
| Feb-19 | (2.0) | 0.5 | 0.8 | 15.8 | (18.0) | (25.5) | 3.8 | (0.6) | 6.9 | 13.4 |
| Mar-19 | 2.6 | 5.0 | 4.0 | 11.7 | (42.0) | (54.3) | 6.3 | (0.1) | 1.0 | (4.3) |
| Apr-19 | (0.0) | (0.0) | (5.4) | (8.6) | 16.8 | 2.5 | 4.0 | (1.8) | (4.1) | (13.2) |
| May-19 | 3.7 | 1.5 | (3.0) | (2.7) | (3.4) | (54.8) | 8.0 | (6.0) | (0.1) | (5.8) |
| Jun-19 | 3.1 | 7.3 | (4.5) | (8.5) | 19.7 | 114.3 | 8.2 | 11.6 | (0.8) | (2.1) |
| Jul-19 | 4.1 | 4.4 | 0.7 | 6.1 | (14.4) | (23.7) | 85.8 | 2.9 | 4.2 | 12.4 |
| Aug-19 | 3.3 | (0.5) | 5.5 | 18.4 | (5.1) | 6.4 | 6.5 | 4.3 | 3.3 | 7.0 |
| Sep-19 | 1.5 | 8.3 | (6.0) | (8.5) | (22.4) | 54.0 | 5.7 | 6.8 | 13.1 | 27.9 |
| Oct-19 | 2.8 | 0.8 | (3.7) | (10.2) | (20.3) | (25.7) | 24.2 | (3.9) | 3.7 | 2.6 |

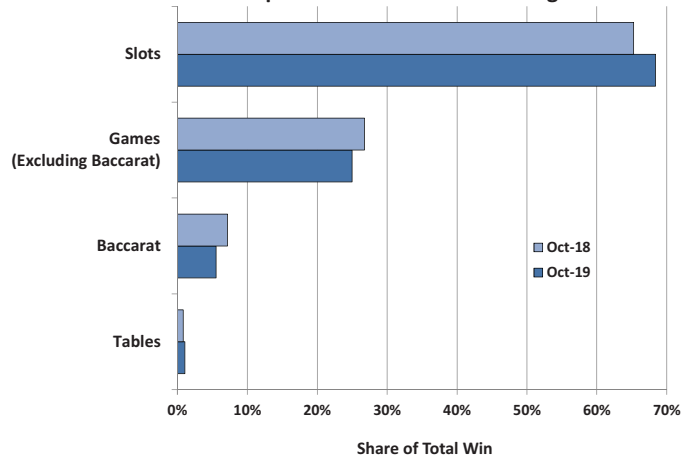
Statewide Average Daily Gaming Volume



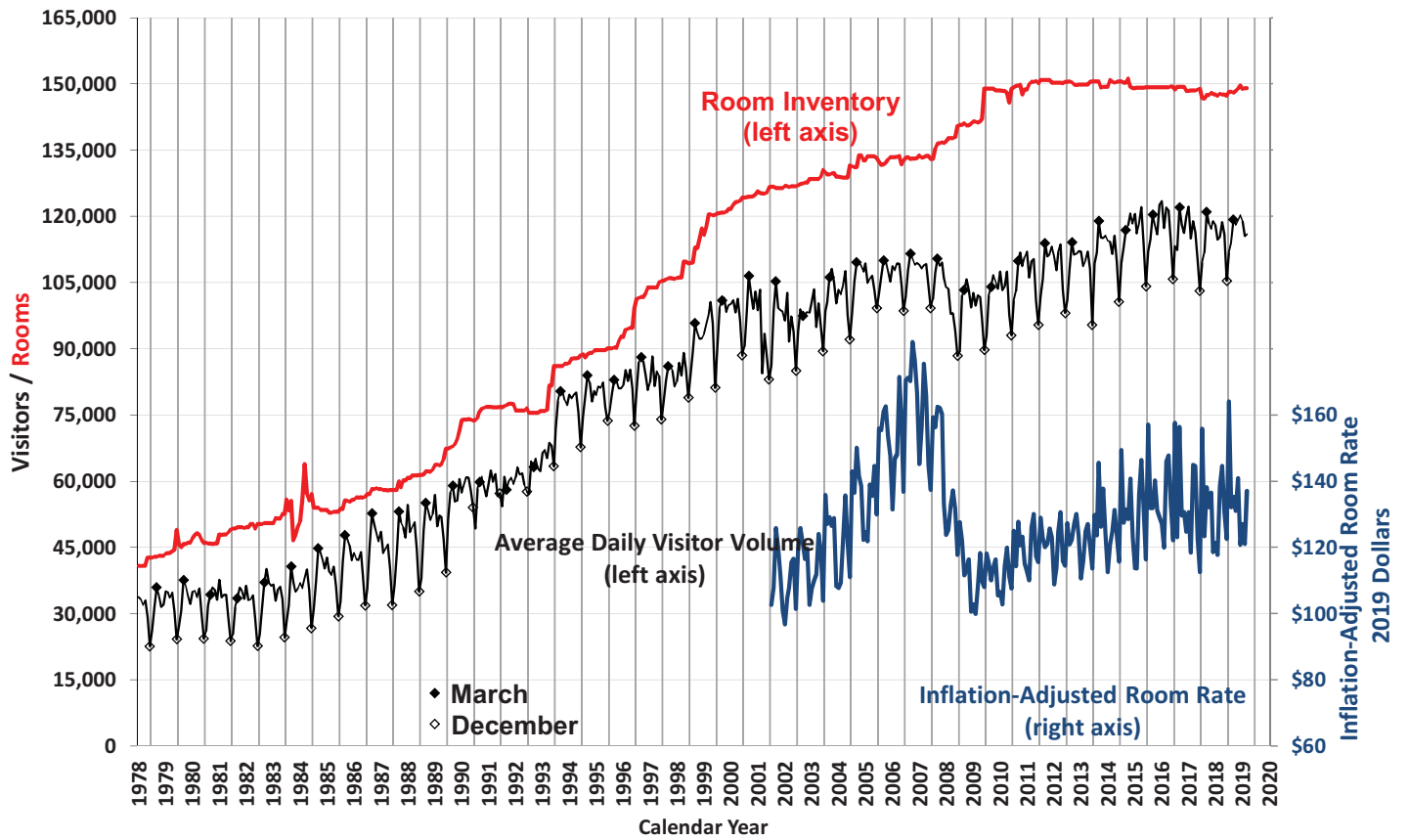
Share of Statewide Win from Clark County



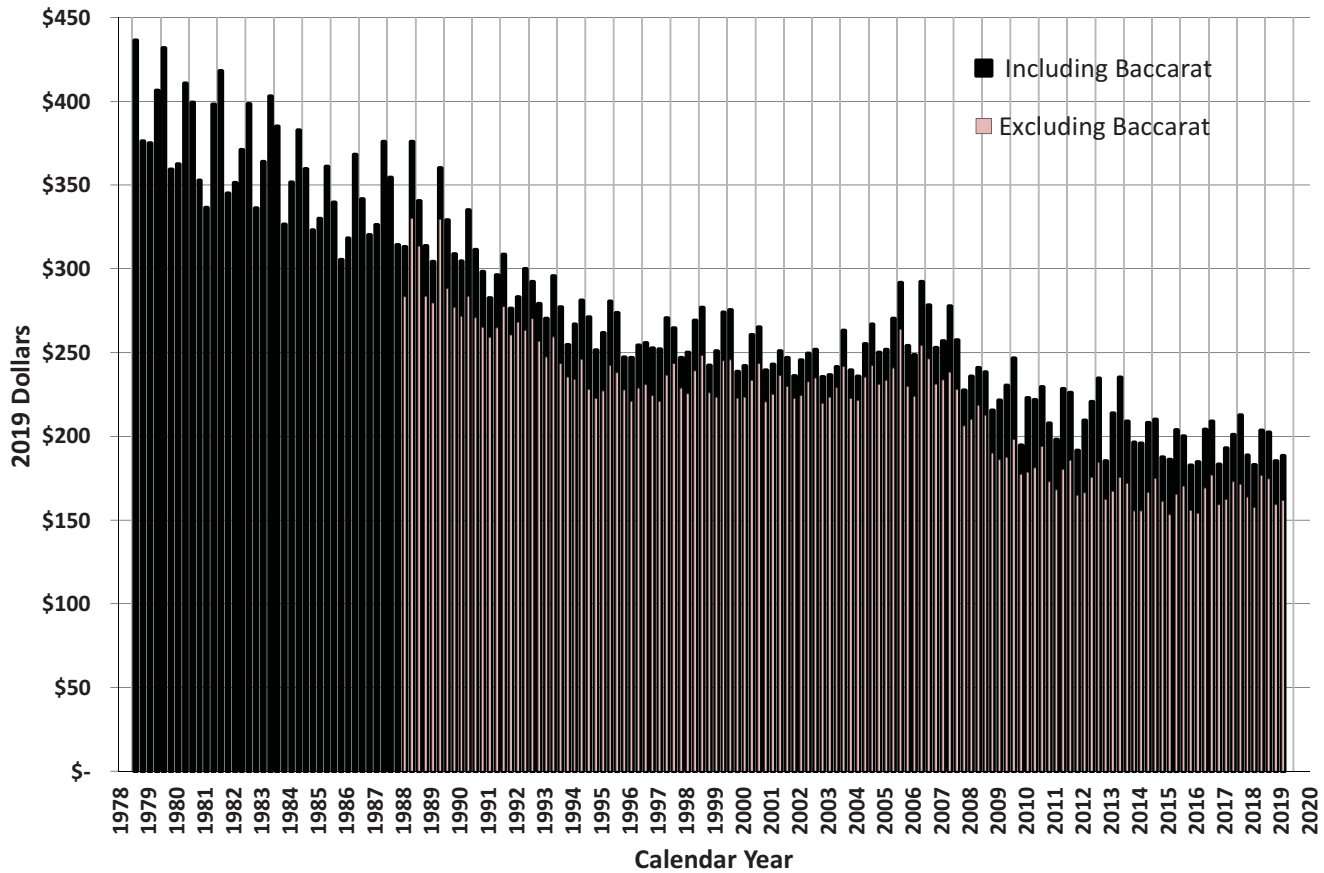
Components of Statewide Gaming Win



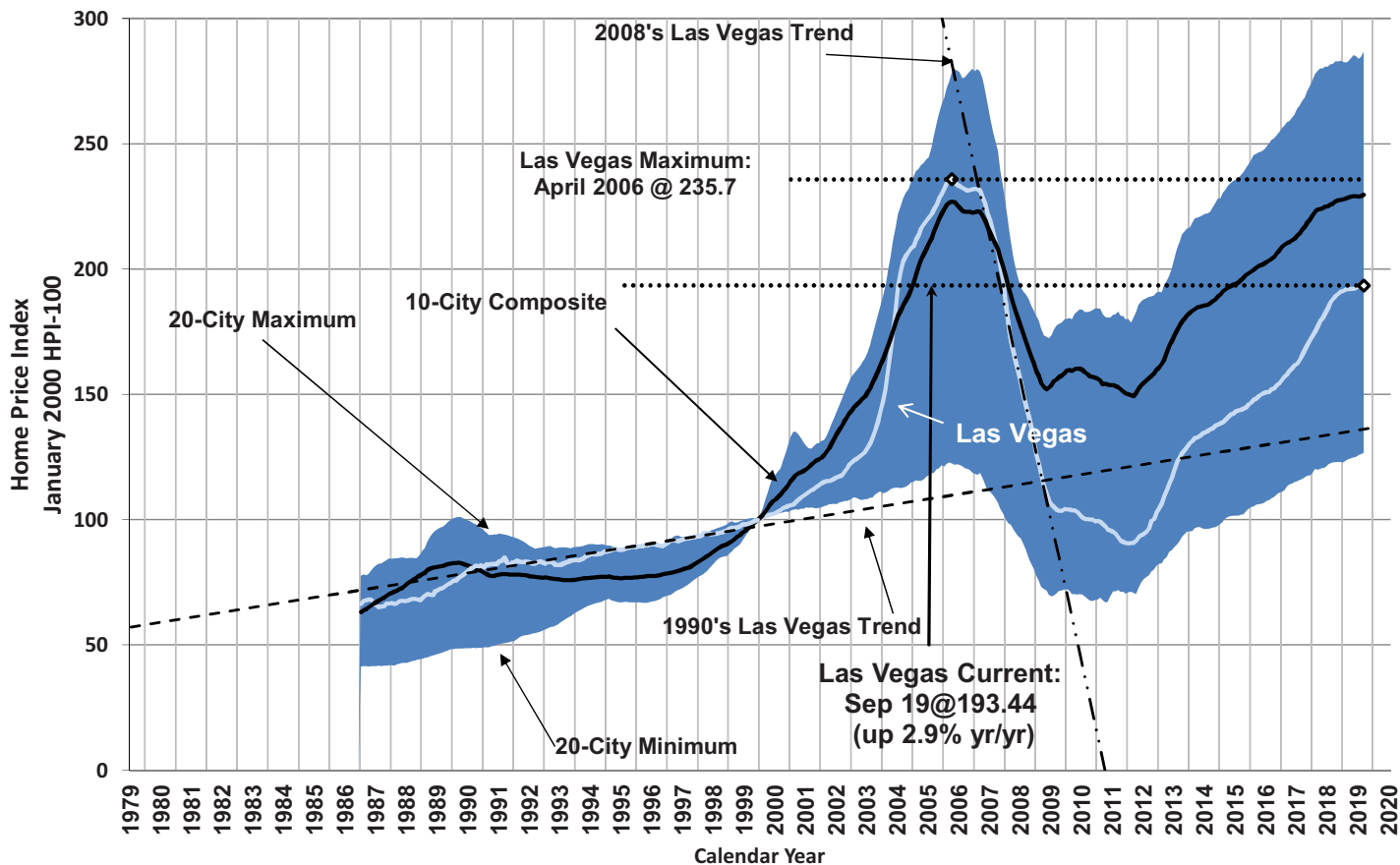
Las Vegas Visitors vs. Rooms



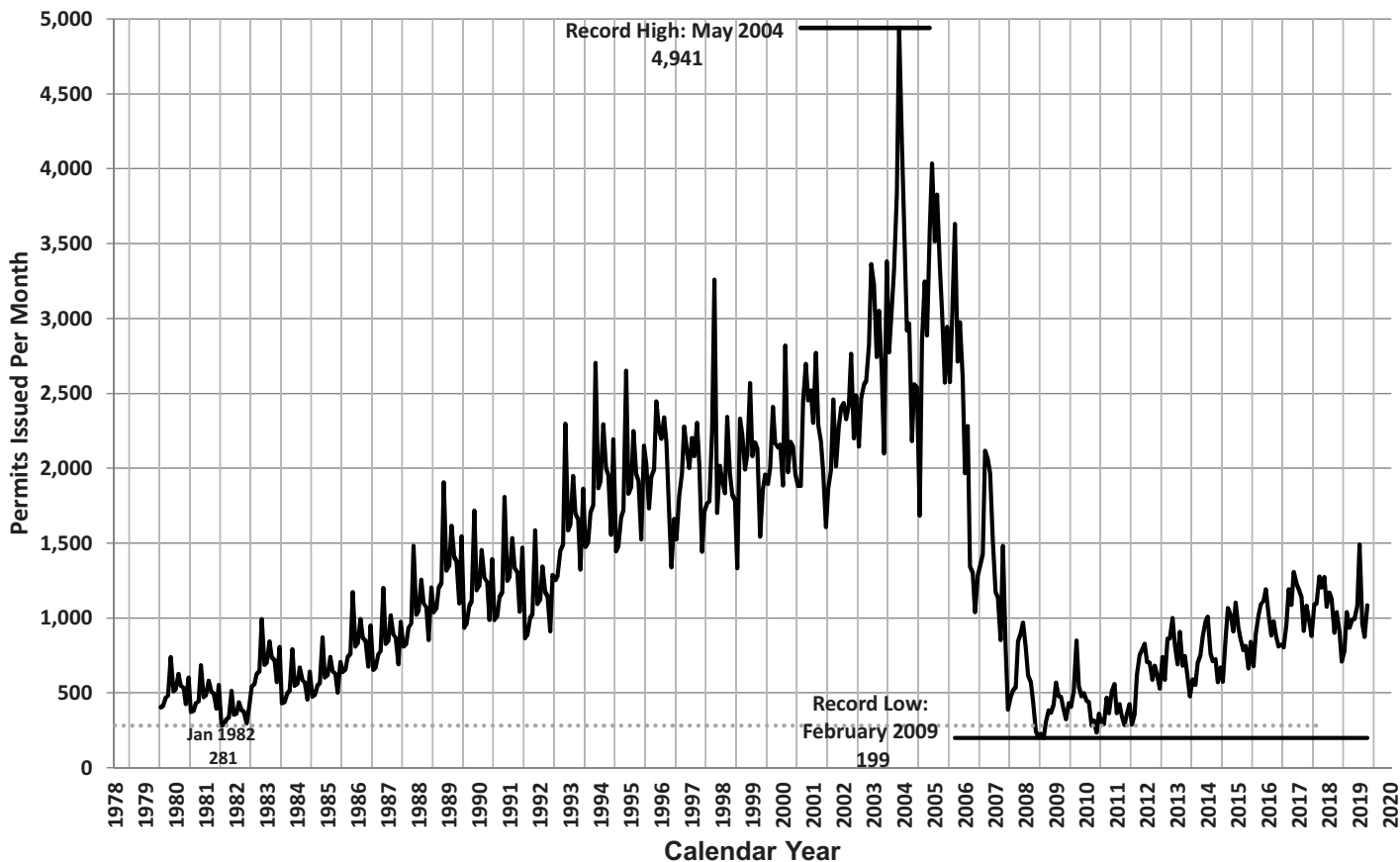
Average Las Vegas Gaming Win per Visitor (Inflation-Adjusted)



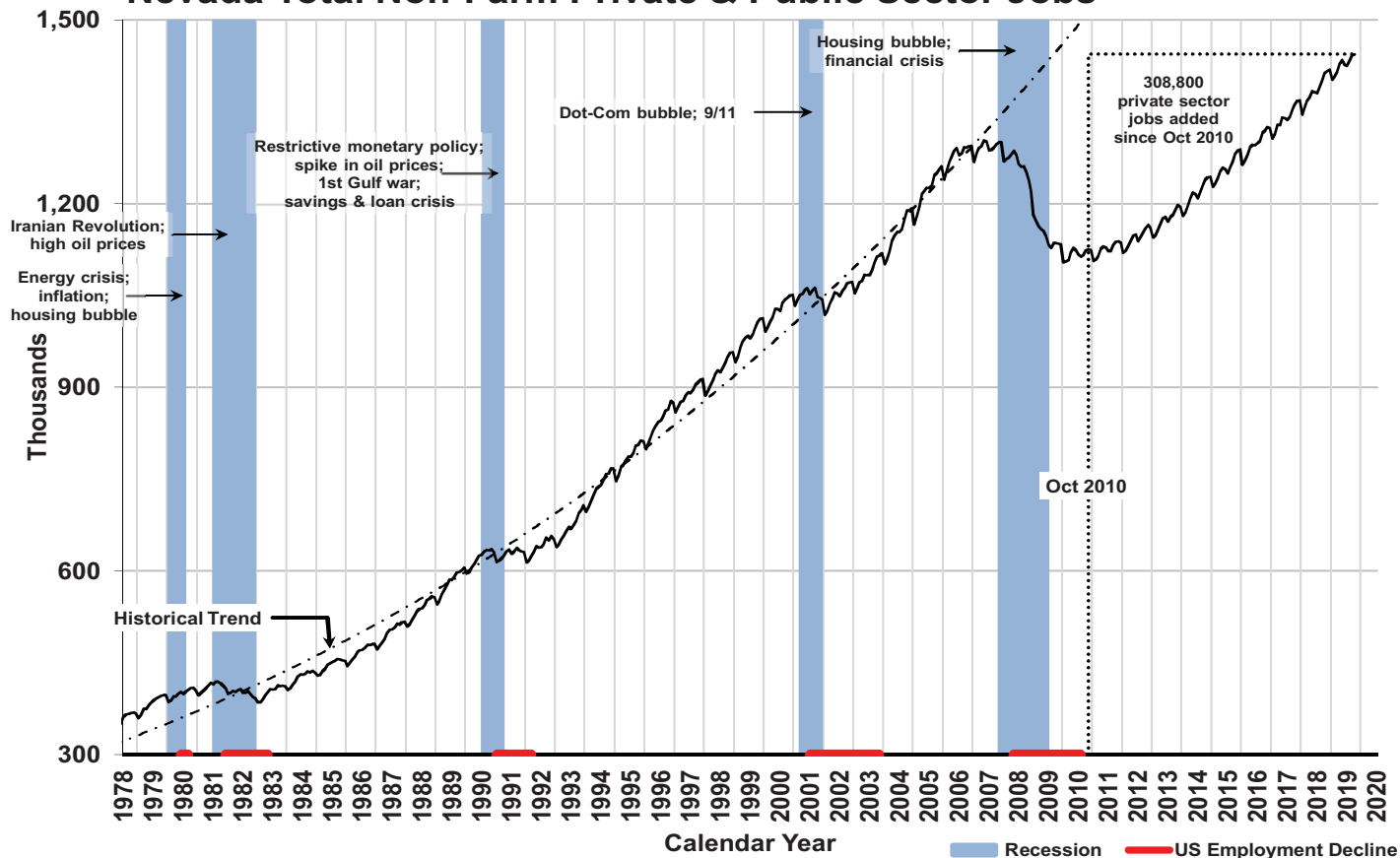
Case-Shiller Seasonally Adjusted Home Price Index



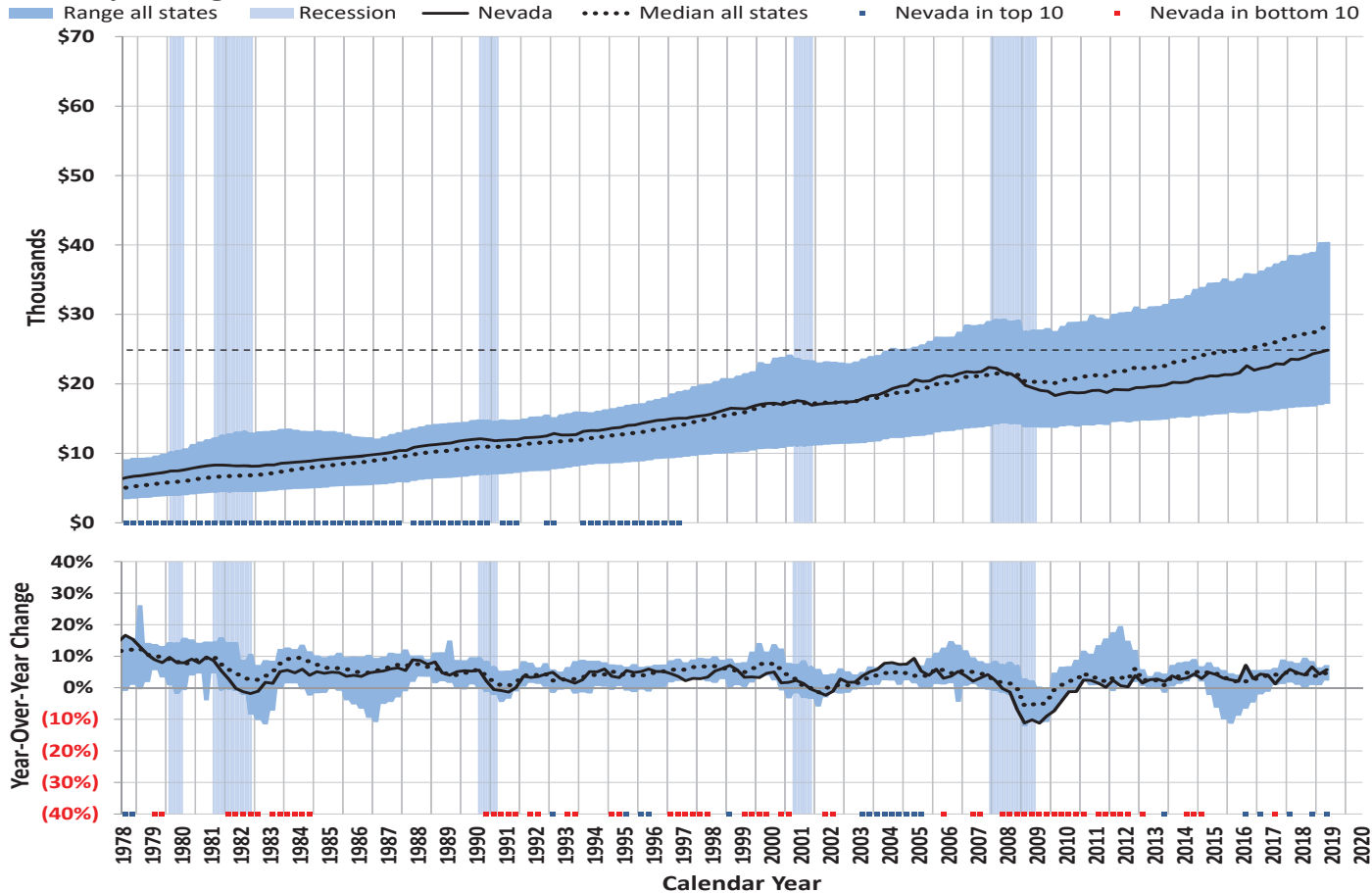
Nevada Single Family Home Permits Issued Each Month



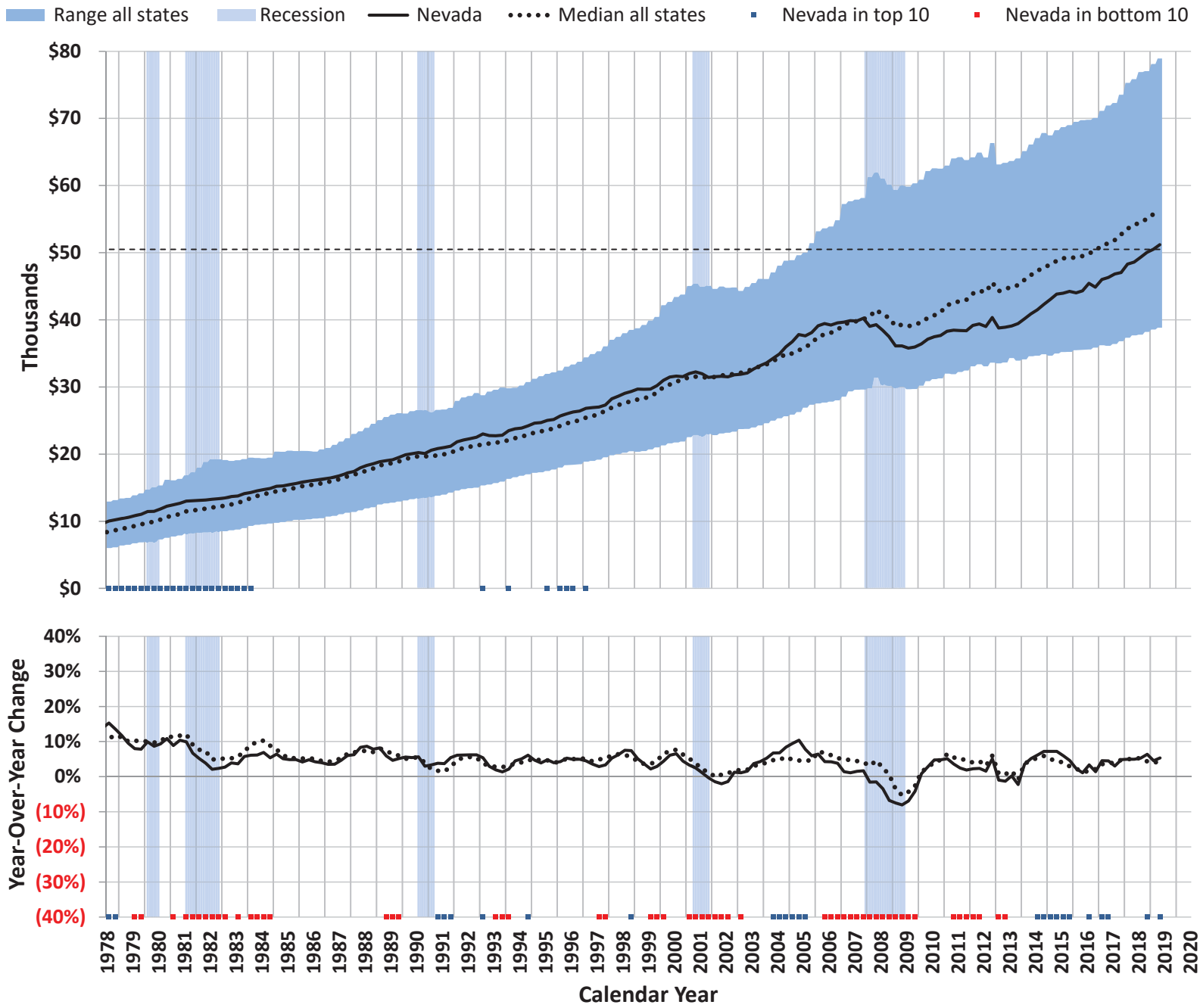
Nevada Total Non-Farm Private & Public Sector Jobs



Per Capita Wages & Salaries



Per Capita Personal Income



Conference Board Consumer Confidence Index 1985=100

