

The SILVER SAGE

AN OVERVIEW OF NEVADA'S ECONOMY BY THE SAGES AT THE DEPARTMENT OF ADMINISTRATION



		US Rate	Nevada Rate	Nevada Rank 1 = worst
Foreclosure Filings Rate	Feb '11	0.2%	0.8%	1
Home Price Index (FHFA)	2010q4 v 2009q4	-4.0%	-6.6%	8
	2010q4 v 2005q4	-11.5%	-52.8%	1
Wage & Salary Disbursements	2010q4 v 2009q4	3.4%	1.0%	1
Personal Income	2010q4 v 2009q4	5.5%	2.1%	1
Employment	Mar '11 v Mar '10	1.0%	0.1%	5
Unemployment	Mar '11	8.8%	13.2%	1

You have to remember one thing about the will of the people: it wasn't that long ago that we were swept away by the Macarena.

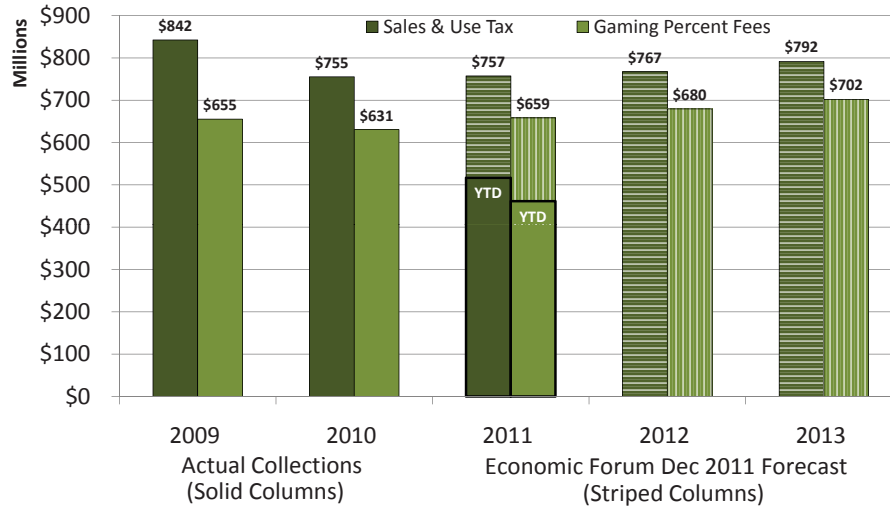
Jon Stewart

State General Fund Revenues

December 2010 Economic Forum Forecast v Actual

General Fund Revenue Sources	FY 2010		FY 2011		Through FY Month/Quarter	FY 2011 Collections					
	Actual	Forecast		Total		Most Recent Period			Year-To-Date		
	Total	Total	Yr/Yr Change			Actual	Over (Under) Budget	Yr/Yr Change	Actual	Over (Under) Budget	Yr/Yr Change
	millions	millions	millions	%	millions	millions	%	millions	millions	%	
Sales Tax	\$755.0	\$757.4	\$2.4	0.3	M-8	\$58.5	\$1.7	4.4	\$516.5	\$20.8	4.5
Percentage Fees Collections*	631.0	658.6	27.6	4.4	M-9	41.6	(13.1)	(11.1)	461.3	(15.2)	1.0
Modified Business Tax	385.1	372.8	(12.3)	(3.2)	Q-2	99.7	0.2	(4.9)	195.3	6.1	(0.1)
Insurance Premium Tax	234.0	235.6	1.6	0.7	Q-2	54.1	(2.1)	(3.1)	113.5	(0.8)	0.0
Live Entertainment Tax - Gaming Portion	108.4	109.9	1.5	1.4	M-8	9.0	0.7	15.2	74.1	2.4	4.8
Lodging Tax	97.6	104.1	6.5	6.6	M-8	8.3	(0.2)	(0.1)	68.8	0.1	6.8
Cigarette Tax	88.6	86.1	(2.5)	(2.8)	M-8	6.5	(0.2)	(11.4)	56.2	(0.5)	(3.7)
Commercial Recordings	68.7	70.1	1.4	2.0	M-9	7.3	0.8	10.3	55.0	4.1	10.2
Real Property Transfer Tax	53.3	44.8	(8.5)	(16.0)	Q-3*	12.7	3.1	12.5	38.1	4.2	(5.5)
Liquor Tax	38.4	38.8	0.3	0.9	M-8	2.4	(0.3)	2.9	25.4	0.4	2.4
Other Revenues	547.0	609.8	62.8	11.5	M-9	31.8	(4.1)	(8.9)	277.2	19.6	10.5
Totals	\$3,007.0	\$3,087.9	\$80.9	2.7		\$331.9	(\$13.5)	(3.0)	\$1,881.2	\$41.2	3.4
*Other Revenues net of EFA	640.9	656.6	15.7	2.5	M-9	47.4	(5.7)	(10.7)	476.4	(9.0)	0.6
Local School Support Tax	958.8	976.3	17.5	1.8	M-8	74.9	2.0	2.8	661.4	21.7	5.3

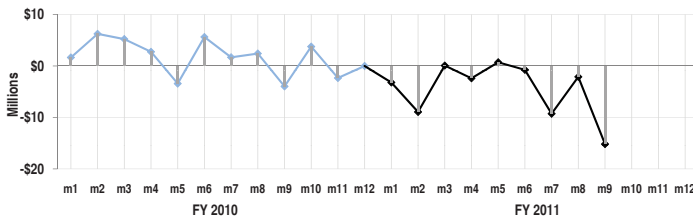
*Third quarter based on preliminary amounts reported by the Controller.



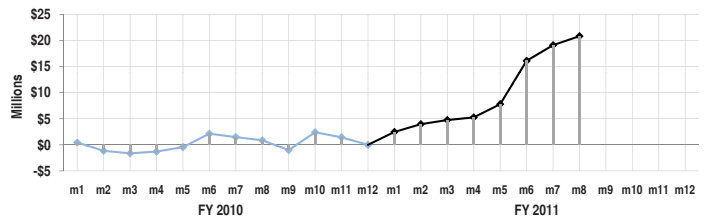
Cumulative Difference Between Actual and Forecast

Positive numbers indicate actual collections ahead of forecast for the indicated fiscal year. The monthly forecasts are based upon the December 2010 Economic Forum projections, assuming a historically derived distribution for monthly collections.

Gaming Percentage Fees Collections



Sales and Use Tax Collections



Statewide Taxable Sales & Use by Industry



	Total (millions)	Year/Year Change (millions)	Year/Year Change (%)
February 2010	\$2,803.8	(\$131.5)	(4.5)
March 2010	3,329.2	(266.3)	(7.4)
April 2010	3,282.8	65.3	2.0
May 2010	3,133.8	(59.1)	(1.9)
June 2010	3,330.8	(10.9)	(0.3)
July 2010	3,239.5	164.1	5.3
August 2010	3,225.4	149.1	4.8
September 2010	3,244.0	67.4	2.1
October 2010	3,137.1	68.6	2.2
November 2010	3,097.6	80.8	2.7
December 2010	4,063.5	407.9	11.2
January 2011	3,008.8	186.2	6.6
February 2011	2,923.8	120.0	4.3

Food Services & Drinking Places (722)				Miscellaneous Retail & Non-Retail Stores (442, 443, 447, 451, 453, 454)				Information, Financial, Insurance, Real Estate, Renting & Leasing* (511-533)				General Merchandise Stores (452)				
Year/Year Change		Share of Total		Year/Year Change		Share of Total		Year/Year Change		Share of Total		Year/Year Change		Share of Total		
(millions)	%	%	Rank	(millions)	%	%	Rank	(millions)	%	%	Rank	(millions)	%	%	Rank	
February 2010	\$63.5	13.2	19.4	1	(\$3.8)	(1.1)	12.0	2	(\$56.8)	(16.0)	10.6	3	\$7.4	2.6	10.3	4
March 2010	28.0	5.1	17.4	1	12.5	3.4	11.4	2	(23.4)	(6.1)	10.9	3	9.0	2.6	10.5	4
April 2010	0.7	0.1	17.7	1	6.1	1.8	10.7	2	(32.9)	(9.4)	9.6	3	(5.9)	(2.0)	8.7	5
May 2010	(3.9)	(0.7)	18.5	1	14.5	4.3	11.3	2	(31.8)	(9.5)	9.6	4	(1.0)	(0.3)	9.9	3
June 2010	24.4	4.6	16.7	1	1.3	0.3	11.5	3	14.3	3.7	12.1	2	12.0	4.0	9.4	4
July 2010	10.7	2.0	17.2	1	33.0	9.8	11.4	2	54.9	17.7	11.3	3	1.9	0.7	8.8	5
August 2010	24.7	4.6	17.4	1	21.3	6.3	11.2	3	61.9	19.6	11.7	2	6.6	2.3	9.2	5
September 2010	7.1	1.3	16.6	1	22.2	6.2	11.7	2	(22.2)	(6.1)	10.5	3	8.2	2.9	9.0	5
October 2010	42.1	8.1	17.8	1	24.7	6.9	12.1	2	(37.6)	(10.9)	9.8	3	0.9	0.3	9.3	4
November 2010	7.8	1.6	15.9	1	29.2	7.9	12.9	2	(27.6)	(8.8)	9.2	5	3.9	1.1	11.3	3
December 2010	66.6	15.2	12.4	2	15.5	3.1	12.6	1	2.3	0.6	9.2	4	(1.0)	(0.2)	12.2	3
January 2011	37.2	6.9	19.2	1	22.0	6.6	11.7	2	26.0	8.9	10.6	3	(11.0)	(4.1)	8.6	5
February 2011	(4.6)	(0.8)	18.5	1	(14.4)	(4.3)	11.0	2	(20.3)	(6.8)	9.5	5	(5.8)	(2.0)	9.6	4
H ₀ : change>0**	Yes			Yes			No			No			No			

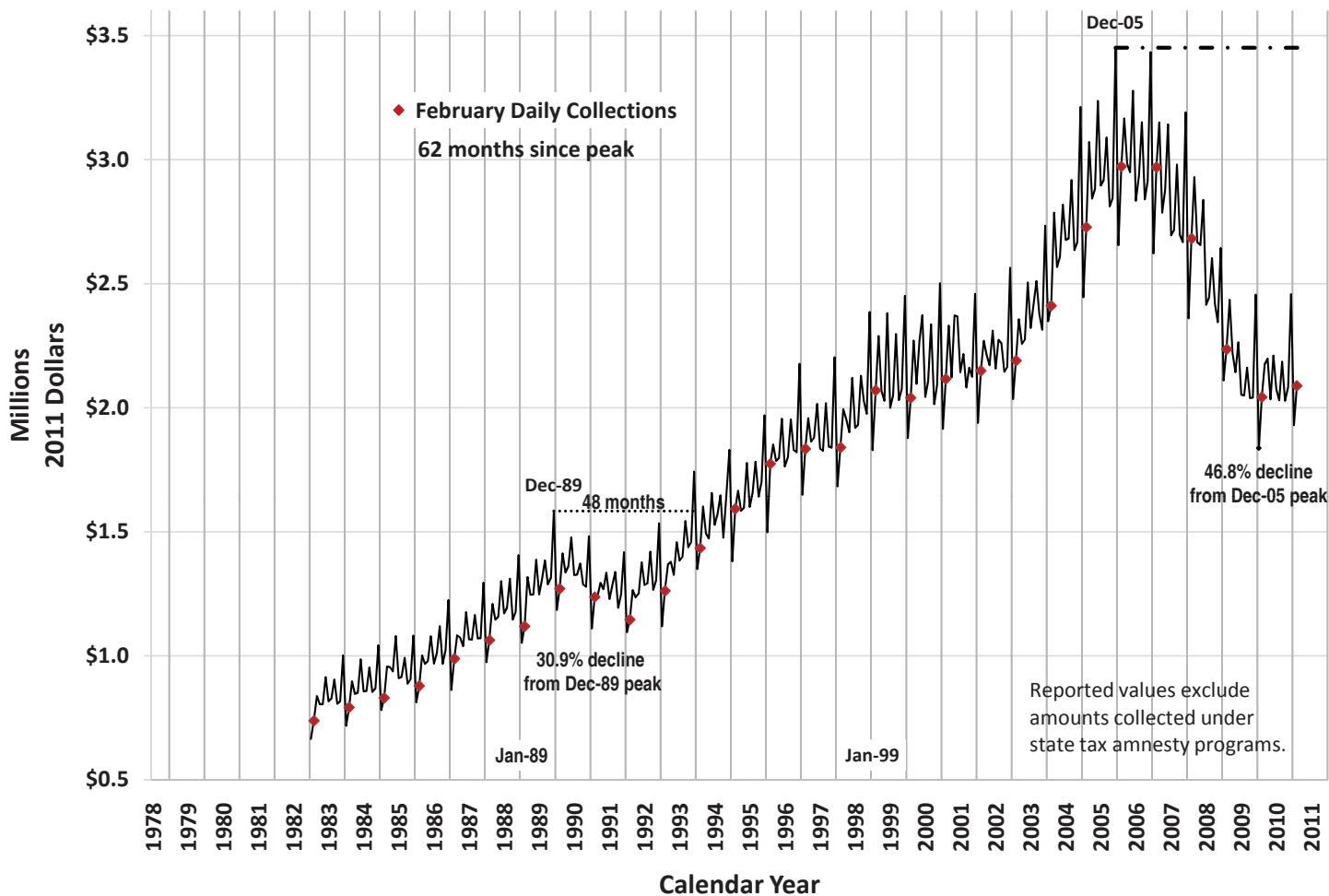
Motor Vehicle & Parts Dealers (441)				Clothing & Clothing Accessories Stores (448)				Wholesale Trade (423-425)				Manufacturing* (311-339)				
Year/Year Change		Share of Total		Year/Year Change		Share of Total		Year/Year Change		Share of Total		Year/Year Change		Share of Total		
(millions)	%	%	Rank	(millions)	%	%	Rank	(millions)	%	%	Rank	(millions)	%	%	Rank	
February 2010	\$19.5	8.5	8.9	5	\$21.6	11.1	7.7	6	(\$46.7)	(17.8)	7.7	7	(\$36.2)	(24.5)	4.0	10
March 2010	29.6	10.7	9.2	5	34.3	15.6	7.6	7	(273.9)	(51.4)	7.8	6	(7.7)	(4.4)	5.1	9
April 2010	28.7	10.9	8.9	4	11.0	5.2	6.8	8	(38.6)	(13.7)	7.4	7	113.1	70.6	8.3	6
May 2010	(5.1)	(1.7)	9.6	5	22.9	10.7	7.6	6	(22.5)	(8.9)	7.4	7	(16.1)	(10.2)	4.5	9
June 2010	(15.9)	(5.2)	8.7	5	25.7	11.4	7.5	7	(14.7)	(5.0)	8.3	6	(8.6)	(5.1)	4.8	8
July 2010	13.4	4.4	9.8	4	25.5	12.4	7.1	7	(10.0)	(3.9)	7.7	6	8.5	5.2	5.3	8
August 2010	(28.4)	(8.4)	9.6	4	22.8	10.3	7.6	7	2.9	1.2	7.6	6	37.9	27.5	5.4	8
September 2010	40.2	15.1	9.5	4	21.0	8.7	8.1	7	(8.6)	(3.2)	8.1	6	12.9	7.5	5.7	8
October 2010	19.8	7.5	9.1	5	22.4	10.0	7.8	7	9.8	4.1	7.9	6	(7.5)	(4.6)	4.9	9
November 2010	56.6	24.4	9.3	4	24.6	9.9	8.8	6	(0.0)	(0.0)	7.3	7	(0.5)	(0.3)	5.0	9
December 2010	32.6	12.3	7.3	7	22.3	6.5	9.0	6	19.5	7.6	6.8	8	(6.6)	(3.1)	5.0	9
January 2011	32.5	12.5	9.7	4	24.7	12.4	7.5	7	20.8	9.8	7.8	6	10.2	7.0	5.2	9
February 2011	43.9	17.6	10.0	3	24.9	11.5	8.2	7	33.6	15.6	8.5	6	41.0	36.9	5.2	8
H ₀ : change>0**	Yes			Yes			No			No			No			

Arts, Entertainment, Recreation & Accommodation (711-721)				Food & Beverage Stores (445)				Building Material & Garden Equipment & Supplies (444)				Health & Personal Care Stores (446)				
Year/Year Change		Share of Total		Year/Year Change		Share of Total		Year/Year Change		Share of Total		Year/Year Change		Share of Total		
(millions)	%	%	Rank	(millions)	%	%	Rank	(millions)	%	%	Rank	(millions)	%	%	Rank	
February 2010	\$15.3	13.3	4.6	8	(\$2.9)	(2.5)	4.1	9	(\$11.8)	(10.6)	3.6	11	(\$17.6)	(17.1)	3.0	12
March 2010	35.8	26.6	5.1	8	0.1	0.1	3.8	11	(11.4)	(8.1)	3.9	10	(4.0)	(3.4)	3.4	12
April 2010	23.2	15.0	5.4	9	(4.1)	(3.2)	3.8	11	(7.6)	(5.0)	4.4	10	(17.5)	(15.4)	2.9	12
May 2010	37.1	23.0	6.3	8	(9.8)	(7.2)	4.1	11	(12.8)	(8.6)	4.4	10	(3.1)	(3.0)	3.2	12
June 2010	(4.2)	(2.6)	4.7	9	(2.6)	(1.9)	4.0	11	(0.3)	(0.2)	4.4	10	(6.0)	(5.4)	3.2	12
July 2010	26.6	18.6	5.2	9	(5.2)	(3.9)	3.9	11	1.1	0.8	4.4	10	0.3	0.4	2.9	12
August 2010	14.2	9.2	5.2	9	(2.0)	(1.6)	3.9	10	2.4	2.1	3.8	11	1.5	1.6	2.9	12
September 2010	15.6	10.0	5.3	9	1.3	1.1	3.9	10	(7.8)	(6.1)	3.7	11	(0.1)	(0.1)	3.1	12
October 2010	27.8	17.3	6.0	8	(2.9)	(2.3)	3.9	11	(4.3)	(3.4)	3.9	10	(0.5)	(0.5)	3.1	12
November 2010	19.8	13.3	5.4	8	1.2	1.0	4.1	10	(0.6)	(0.6)	3.5	11	8.0	9.0	3.1	12
December 2010	20.7	13.7	4.2	10	(6.1)	(3.6)	4.0	11	(1.4)	(1.3)	2.6	13	(3.2)	(2.4)	3.3	12
January 2011	28.0	20.0	5.6	8	(1.3)	(1.1)	3.8	10	0.1	0.1	3.4	11	4.7	5.6	3.0	12
February 2011	17.7	13.6	5.1	9	2.1	1.8	4.0	10	(5.3)	(5.3)	3.2	11	2.6	3.1	3.0	12
H ₀ : change>0**	Yes			No			No			No			No			

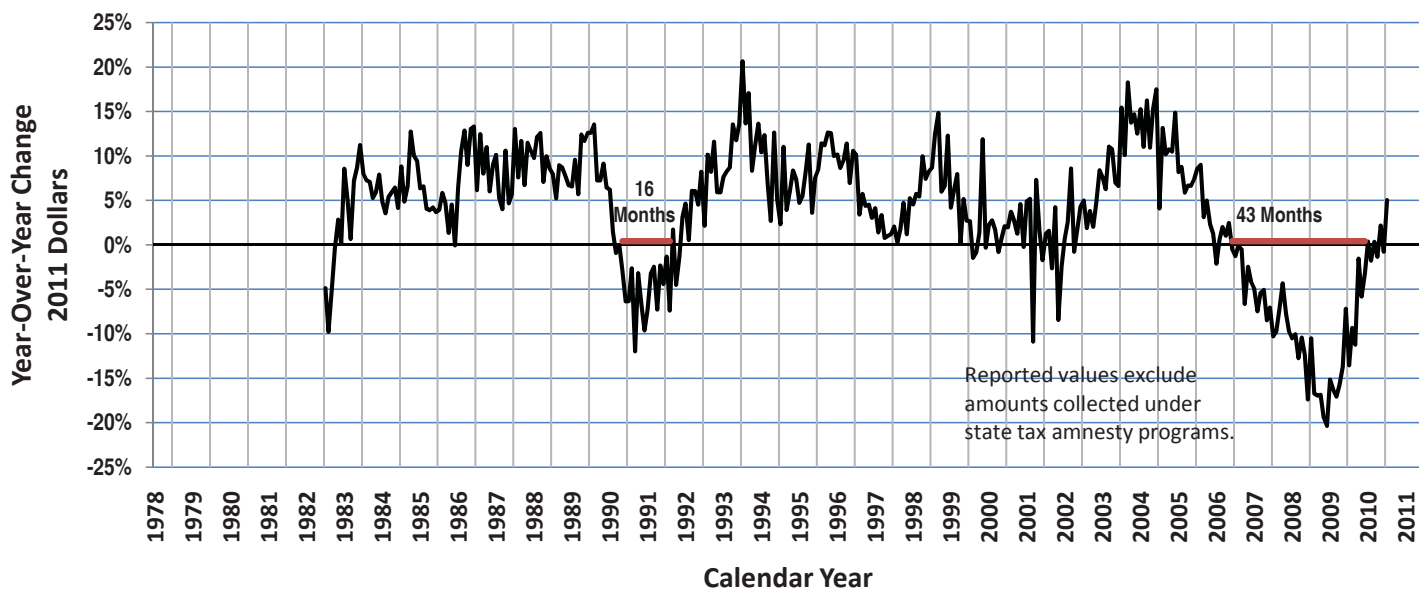
Construction (236-238)				Natural Resources & Utilities* (111-221)				Transportation & Warehousing (481-493)				Other Services***, Public Administration & Miscellaneous (541-624, 811-999)				
Year/Year Change		Share of Total		Year/Year Change		Share of Total		Year/Year Change		Share of Total		Year/Year Change		Share of Total		
(millions)	%	%	Rank	(millions)	%	%	Rank	(millions)	%	%	Rank	(millions)	%	%	Rank	
February 2010	(\$79.8)	(57.4)	2.1	13	\$0.6	1.3	1.6	14	(\$2.8)	(19.3)	0.4	15	(\$0.9)	(42.2)	0.0	16
March 2010	(96.2)	(57.6)	2.1	13	(4.0)	(8.9)	1.2	14	4.8	35.9	0.5	15	0.1	4.0	0.1	16
April 2010	(40.4)	(32.1)	2.6	13	30.3	65.1	2.3	14	(0.1)	(0.8)	0.4	15	(0.9)	(32.2)	0.1	16
May 2010	(29.1)	(31.6)	2.0	13	(4.6)	(10.4)	1.2	14	3.8	36.0	0.5	15	2.3	118.5	0.1	16
June 2010	(45.2)	(36.3)	2.4	13	5.9	12.2	1.6	14	3.6	26.8	0.5	15	(0.7)	(28.2)	0.1	16
July 2010	(34.7)	(29.4)	2.6	13	33.3	121.9	1.9	14	4.9	43.8	0.5	15	0.1	3.4	0.1	16
August 2010	(28.4)	(25.1)	2.6	13	14.5	40.4	1.6	14	(3.3)	(22.5)	0.4	15	0.4	51.4	0.0	16
September 2010	(23.3)	(20.8)	2.7	13	1.2	2.4	1.5	14	(0.3)	(1.8)	0.4	15	0.1	5.9	0.1	16
October 2010	(37.3)	(34.1)	2.3	13	9.6	25.2	1.5	14	1.6	14.4	0.4	15	(0.0)	(1.4)	0.0	16
November 2010	(34.2)	(33.8)	2.2	13	(8.1)	(16.0)	1.4	14	0.8	6.7	0.4	15	(0.0)	(5.9)	0.0	16
December 2010	(9.0)	(10.9)	1.8	14	254.4	217.6	9.1	5	1.2	9.7	0.3	15	0.2	9.1	0.0	16
January 2011	(10.9)	(14.7)	2.1	13	2.7	6.3	1.5	14	0.8	7.3	0.4	15	(0.2)	(19.9)	0.0	16
February 2011	(7.3)	(12.3)	1.8	13	7.6	17.4	1.8	14	4.7	40.2	0.6	15	(0.6)	(51.7)	0.0	16
H ₀ : change>0**	No			No			No			No			No			

* Statistically significant outliers in most recent month's data
 ** Statistical significance tested using Wilcoxon Signed Rank Test for most recent 7 months.
 *** Other Services includes Professional, Management, Administration, Education and Health Services.

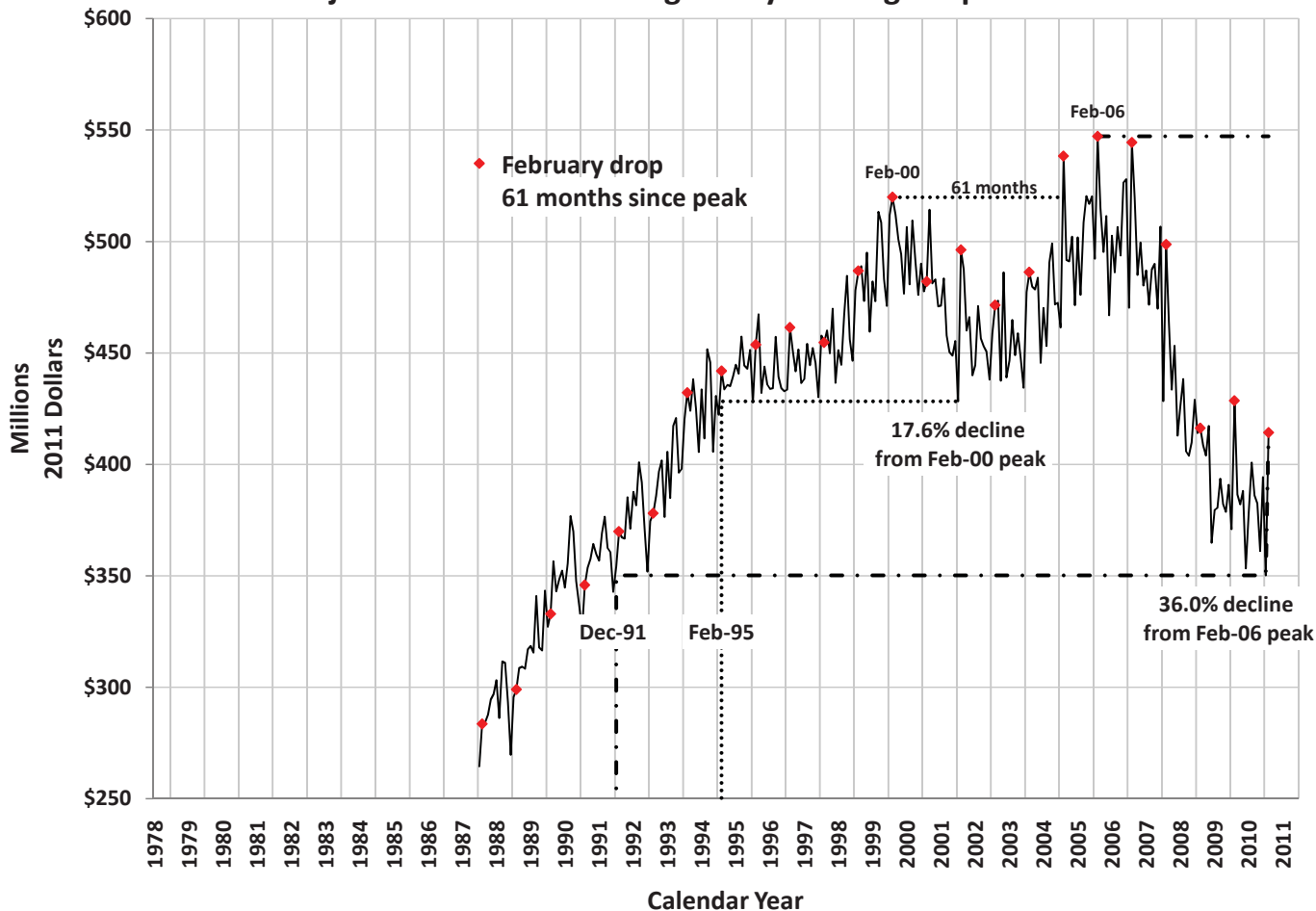
Inflation-Adjusted Average Daily 2% Sales Tax Receipts



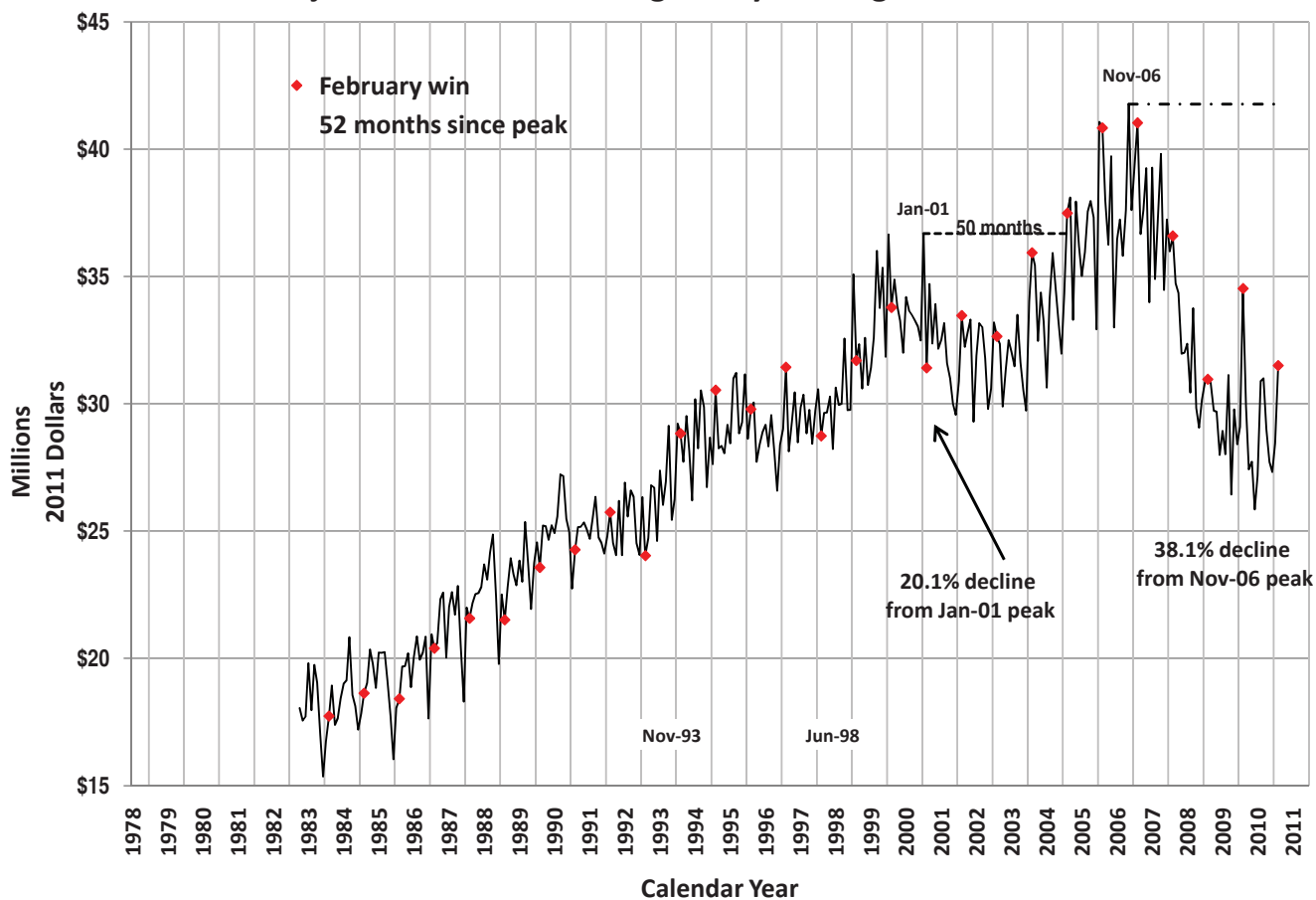
Inflation-Adjusted Daily Sales & Use Tax Collections



Inflation-Adjusted Statewide Average Daily Gaming Drop



Inflation-Adjusted Statewide Average Daily Gaming Win

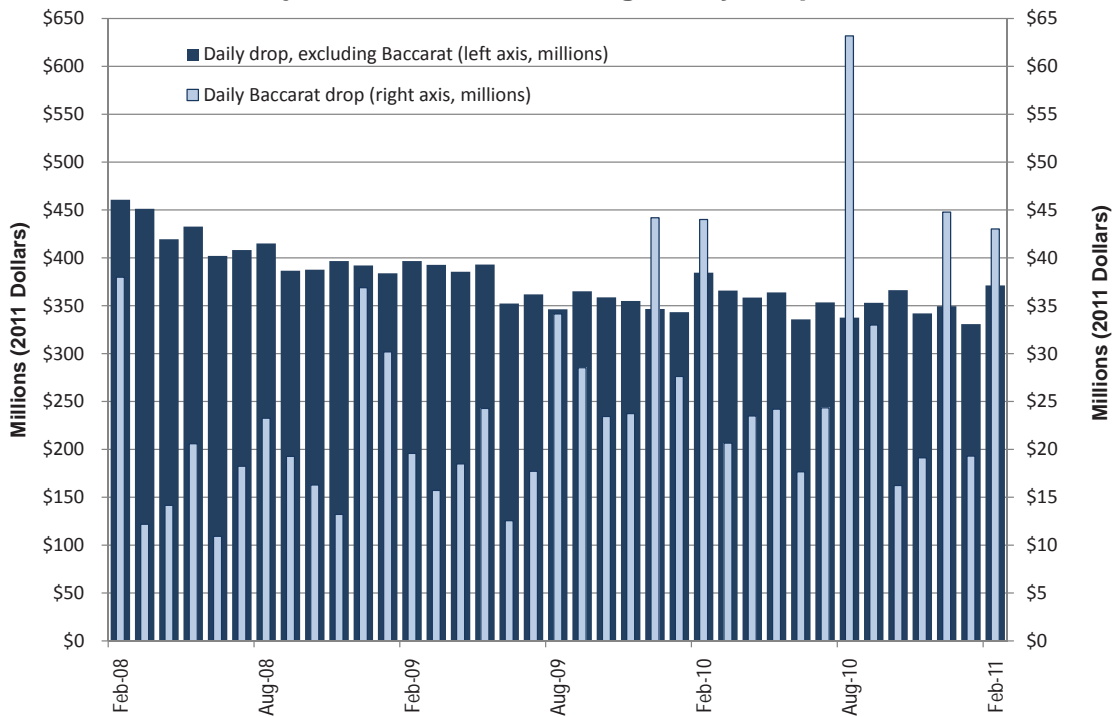


Recent Statewide Gaming Statistics

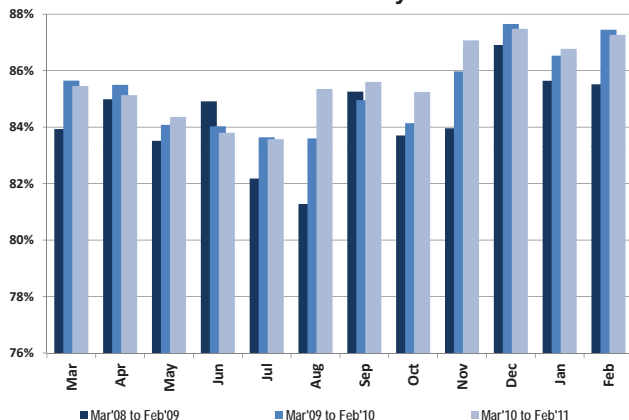
Year-over-Year Change in Inflation-Adjusted Statewide Average Daily Gaming Activity

Date	Slots		Games Excluding Baccarat		Baccarat		Tables	Total	Taxable	Pct. Fee due
	Coin-In	Win	Amt. Played	Win	Amt. Played	Win	Win	Win	Win	after EFA
Feb-09	-12.6%	-6.9%	-21.1%	-20.3%	-48.5%	-49.5%	-11.4%	-15.4%	6.6%	35.4%
Mar-09	-12.7%	-10.5%	-14.7%	-14.8%	-14.7%	-4.0%	-4.3%	-11.3%	-13.2%	-11.3%
Apr-09	-7.3%	-10.6%	-13.3%	-21.9%	30.6%	-11.4%	-4.3%	-13.4%	-18.1%	-7.0%
May-09	-9.0%	-11.8%	-10.1%	-8.2%	17.9%	38.4%	-3.7%	-7.1%	-8.0%	-19.0%
Jun-09	-11.6%	-13.4%	-17.5%	-15.3%	15.0%	8.1%	1.7%	-12.6%	-13.0%	-12.1%
Jul-09	-10.7%	-12.9%	-15.3%	-13.1%	-2.9%	29.1%	-5.6%	-10.6%	-8.6%	3.4%
Aug-09	-15.7%	-6.9%	-21.8%	-27.7%	46.9%	50.7%	-13.5%	-8.0%	-9.2%	-9.3%
Sep-09	-5.8%	-13.7%	-4.4%	-3.5%	48.1%	30.8%	-2.3%	-7.8%	-14.1%	-15.2%
Oct-09	-7.3%	-11.9%	-8.2%	-22.5%	43.9%	61.7%	-6.8%	-11.4%	-11.0%	-11.9%
Nov-09	-11.8%	-3.3%	-2.9%	-5.4%	79.7%	132.6%	-9.7%	2.5%	4.4%	27.1%
Dec-09	-12.1%	-13.6%	-8.6%	-21.4%	19.8%	97.3%	-11.5%	-5.8%	-17.0%	-3.6%
Jan-10	-12.1%	-7.1%	-2.2%	-8.2%	-8.5%	9.5%	-11.3%	-5.7%	3.4%	14.3%
Feb-10	-4.4%	-8.9%	5.3%	1.1%	124.8%	250.9%	-7.4%	11.5%	-13.4%	-30.1%
Mar-10	-8.4%	-4.9%	2.2%	-5.3%	31.4%	55.0%	-11.9%	-2.9%	-0.2%	5.9%
Apr-10	-8.6%	-10.5%	3.5%	-3.9%	27.1%	9.2%	-11.4%	-7.8%	-11.3%	-25.2%
May-10	-9.3%	-1.6%	4.1%	-6.2%	-0.3%	-36.7%	-10.5%	-6.6%	0.7%	17.1%
Jun-10	-6.8%	-3.7%	9.2%	-5.8%	40.7%	-61.6%	-6.7%	-7.6%	-1.8%	-5.5%
Jul-10	-4.7%	-10.2%	12.1%	0.5%	37.4%	7.8%	-5.2%	-6.1%	-12.1%	-14.0%
Aug-10	-4.1%	4.9%	7.9%	6.8%	85.0%	45.0%	-10.4%	10.2%	10.3%	20.4%
Sep-10	-4.2%	-3.5%	2.0%	-4.7%	15.6%	28.2%	-8.0%	-0.4%	1.7%	5.3%
Oct-10	-0.8%	1.4%	19.2%	24.7%	-30.8%	38.1%	-6.0%	9.7%	2.8%	19.8%
Nov-10	-4.4%	1.6%	0.3%	-19.3%	-19.5%	-27.7%	-8.5%	-6.9%	-1.9%	-12.9%
Dec-10	-0.5%	-8.3%	8.2%	7.2%	1.3%	-1.9%	-6.4%	-3.8%	-5.0%	-23.1%
Jan-11	-3.7%	3.9%	-3.1%	1.6%	-30.1%	-40.7%	-9.4%	-2.3%	7.3%	17.8%
Feb-11	-5.2%	-2.5%	6.3%	-0.3%	-2.3%	-33.0%	-9.2%	-8.8%	-11.3%	-15.4%

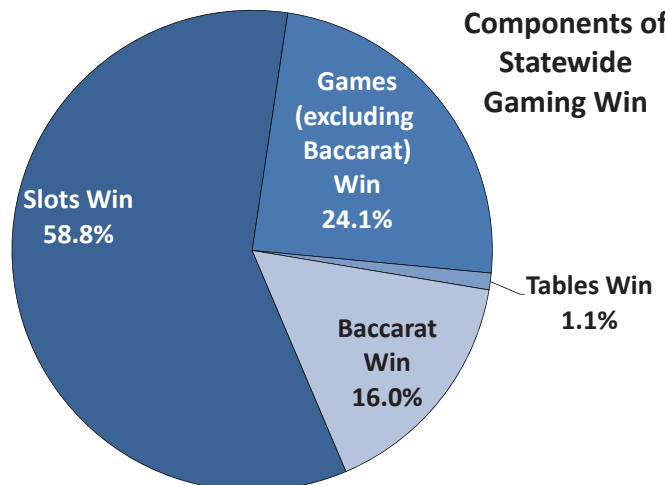
Inflation-Adjusted Statewide Average Daily Drop



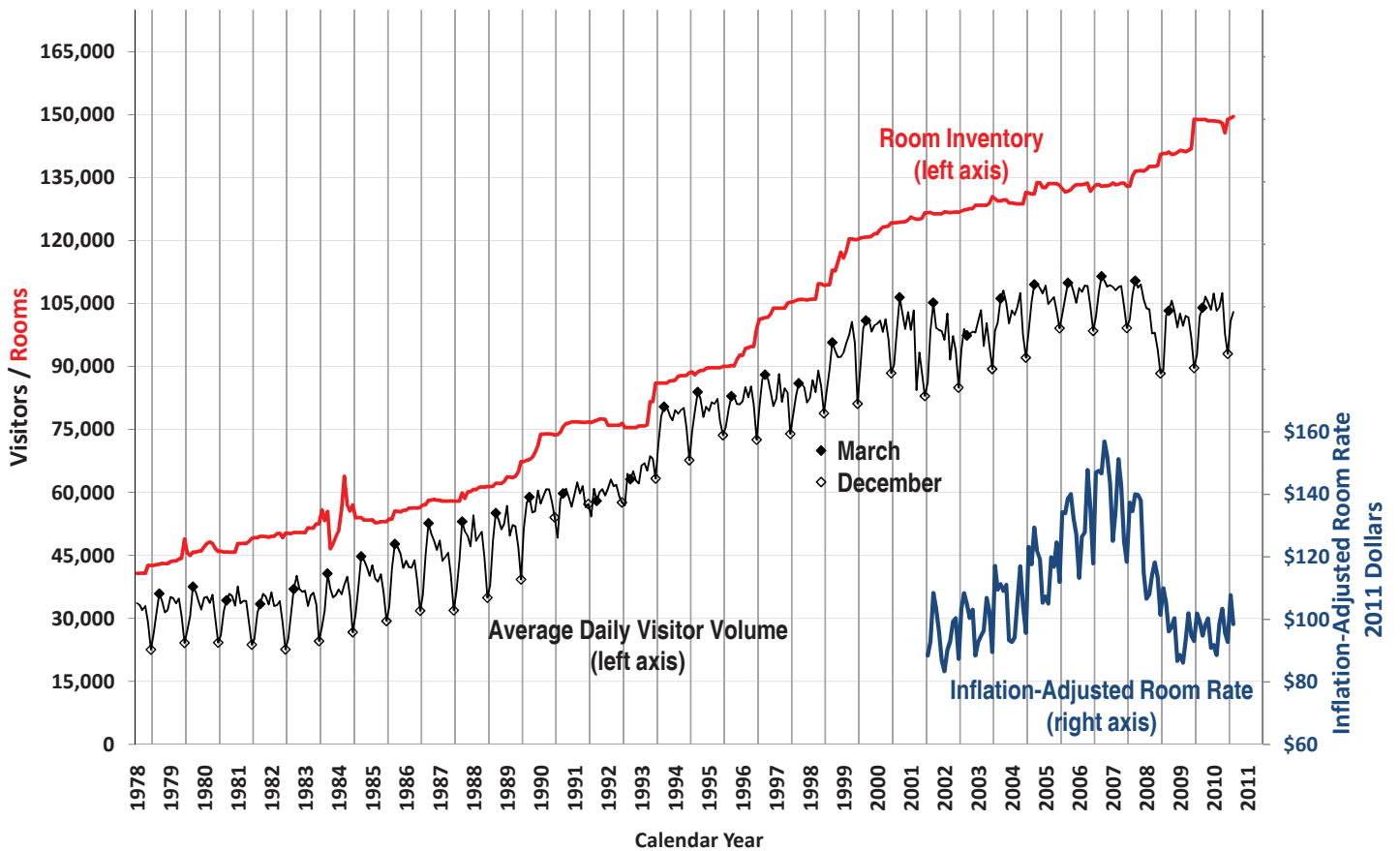
Share of Statewide Win from Clark County



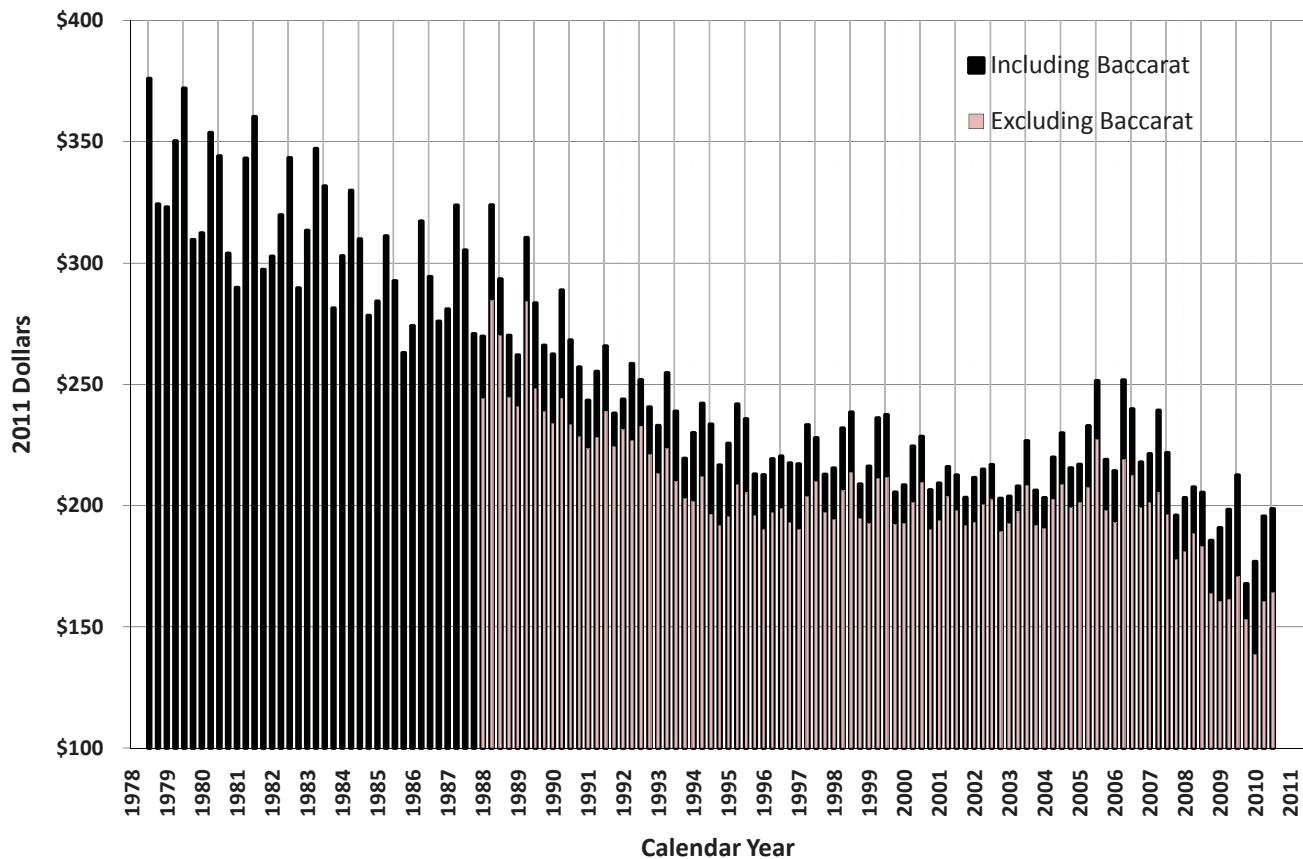
Components of Statewide Gaming Win



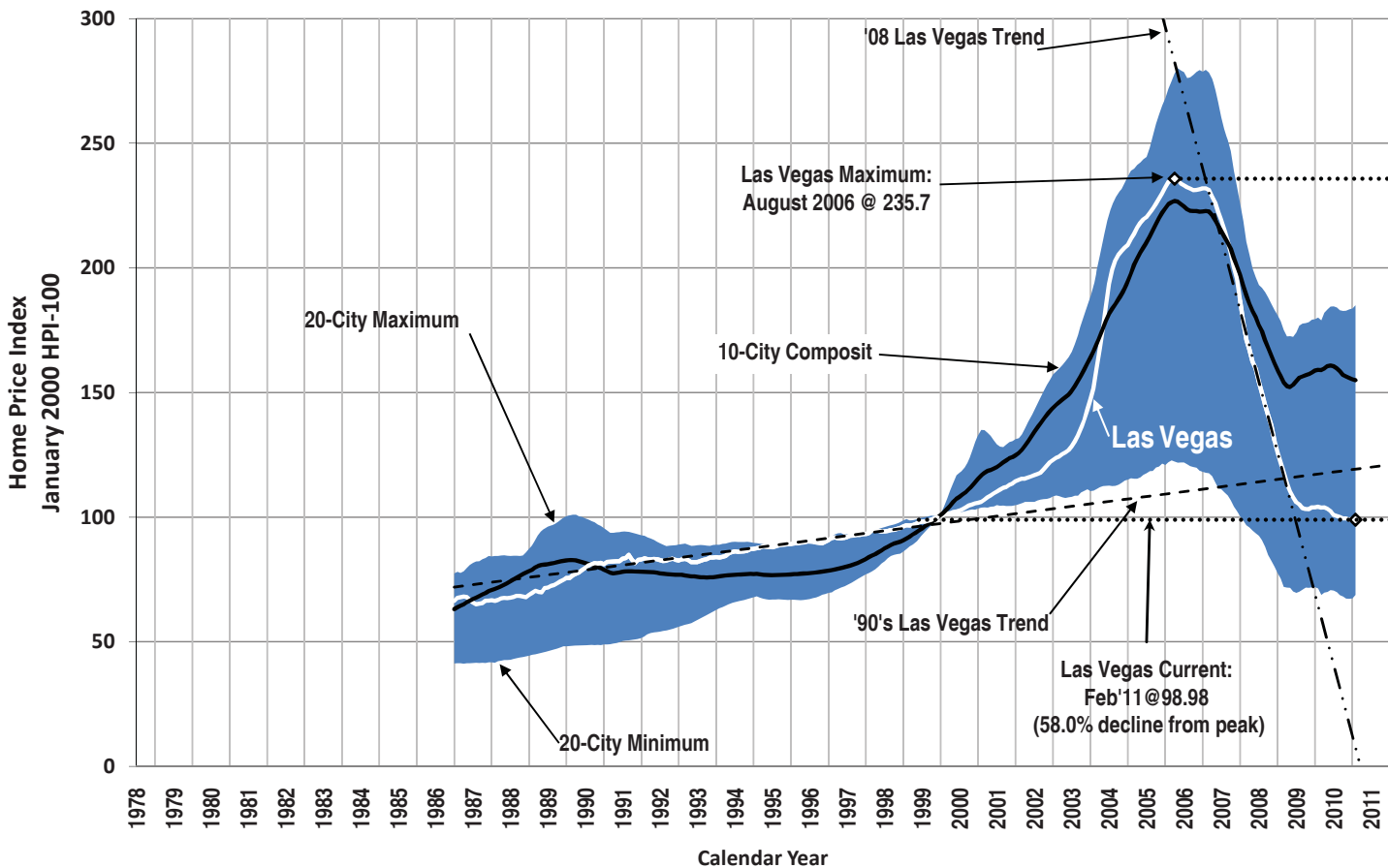
Las Vegas Visitors vs. Rooms



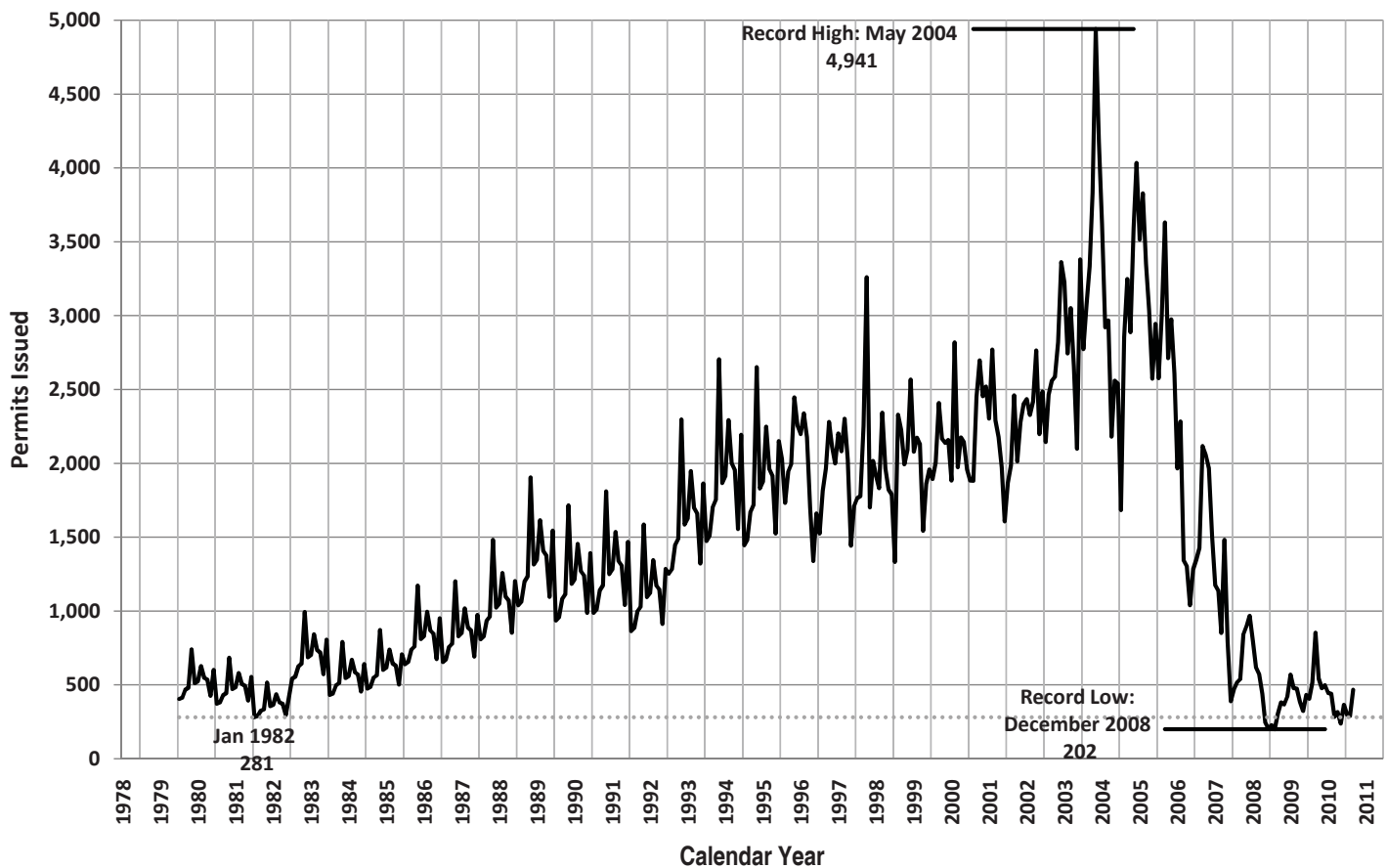
Inflation-Adjusted Average Las Vegas Gaming Win per Visitor



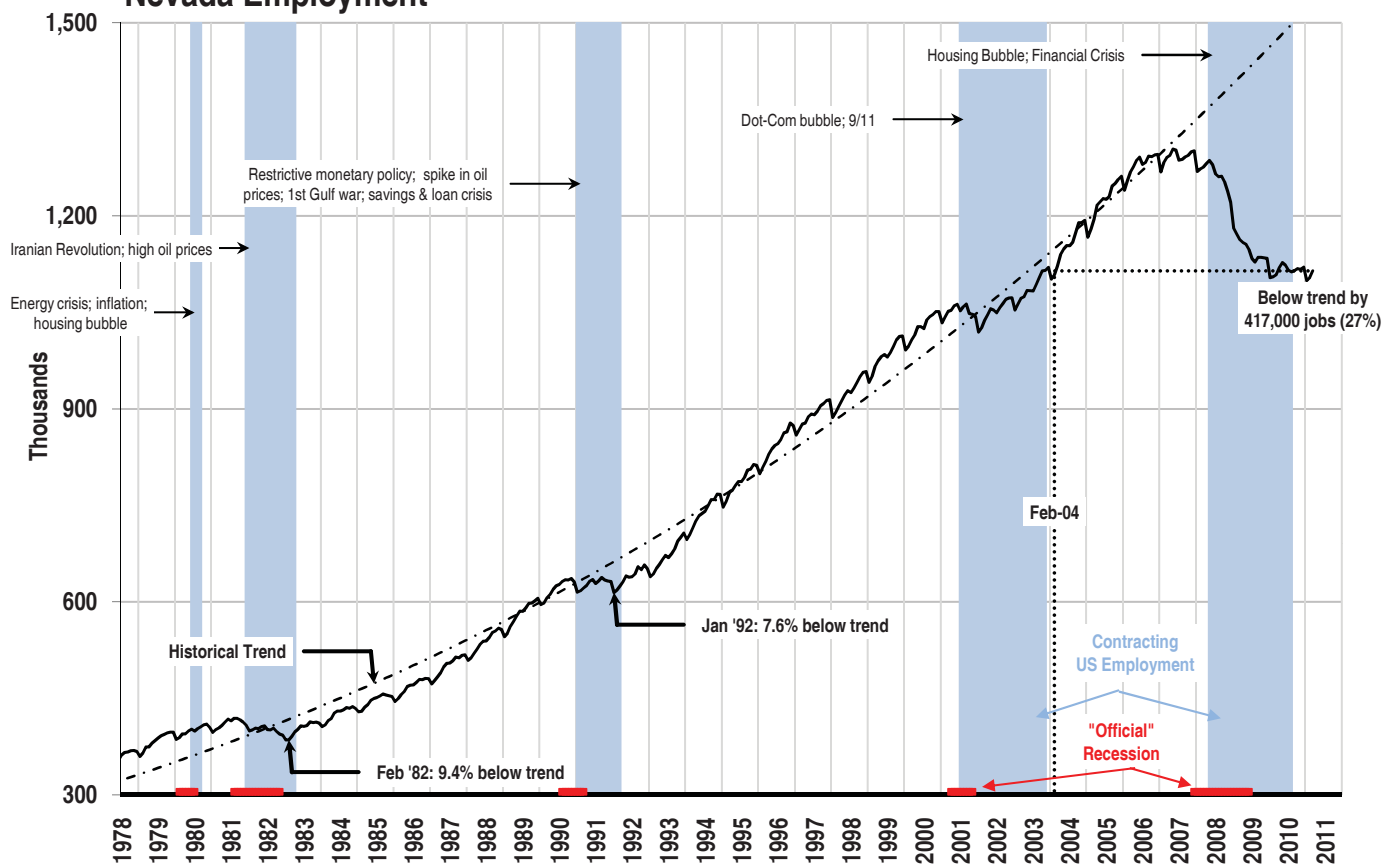
Case-Shiller Seasonally Adjusted Home Price Index



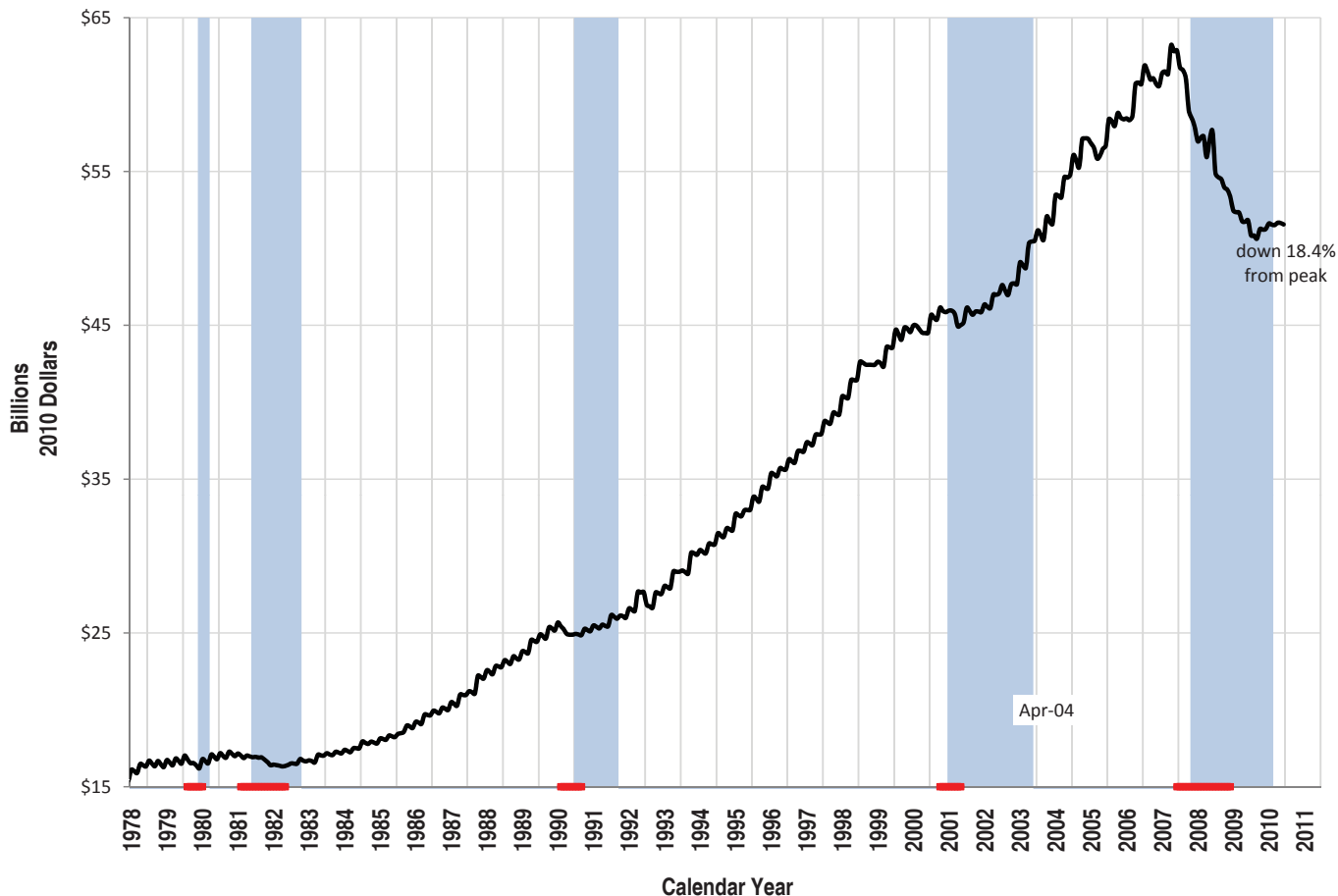
Nevada Single Family Home Permits Issued Each Month



Nevada Employment



Total Nevada Inflation-Adjusted Wage & Salary Disbursements



Statewide Employment by Sector

	Leisure & Hospitality				Trade, Transportation & Utilities				Professional Services				Education & Healthcare			
	Yr/Yr Change		Share of Total		Yr/Yr Change		Share of Total		Yr/Yr Change		Share of Total		Yr/Yr Change		Share of Total	
	(thou.)	%	%	Rank	(thou.)	%	%	Rank	(thou.)	%	%	Rank	(thou.)	%	%	Rank
March 2010	(1.8)	(0.6)	27.6	1	(7.1)	(3.3)	18.6	2	(3.7)	(2.7)	12.0	3	2.8	2.9	8.9	5
April 2010	(0.2)	(0.1)	27.7	1	(5.0)	(2.4)	18.5	2	0.2	0.1	12.1	3	3.3	3.4	8.9	5
May 2010	(0.2)	(0.1)	27.6	1	(4.1)	(1.9)	18.4	2	0.5	0.4	12.0	3	3.1	3.2	8.9	5
June 2010	2.4	0.8	27.9	1	(3.3)	(1.6)	18.6	2	2.2	1.6	12.1	3	2.7	2.8	8.9	4
July 2010	2.1	0.7	28.0	1	(2.1)	(1.0)	18.8	2	4.1	3.1	12.1	3	2.2	2.3	8.9	4
August 2010	3.4	1.1	27.9	1	(1.4)	(0.7)	18.8	2	5.6	4.3	12.3	3	2.1	2.2	8.9	4
September 2010	3.0	1.0	27.8	1	(2.1)	(1.0)	18.8	2	1.1	0.8	12.1	3	2.2	2.3	8.9	4
October 2010	5.0	1.6	27.7	1	(3.2)	(1.5)	18.7	2	2.4	1.8	12.2	3	1.3	1.3	9.0	4
November 2010	4.6	1.5	27.5	1	(5.2)	(2.4)	18.9	2	1.1	0.8	12.3	3	2.0	2.0	9.1	4
December 2010	3.3	1.1	27.6	1	(4.7)	(2.2)	18.9	2	2.7	2.0	12.4	3	2.5	2.5	9.1	4
January 2011	4.3	1.4	27.9	1	(3.5)	(1.7)	18.7	2	2.3	1.7	12.5	3	3.5	3.6	9.3	4
February 2011	3.9	1.3	27.9	1	(3.0)	(1.5)	18.4	2	2.7	2.0	12.3	3	3.3	3.3	9.3	4
March 2011	7.1	2.3	28.1	1	(1.8)	(0.9)	18.4	2	5.9	4.4	12.5	3	5.0	5.0	9.4	4

H₀: change>0* Yes No Yes Yes

	Local Government				Construction				Financial Services				Manufacturing			
	Yr/Yr Change		Share of Total		Yr/Yr Change		Share of Total		Yr/Yr Change		Share of Total		Yr/Yr Change		Share of Total	
	(thou.)	%	%	Rank	(thou.)	%	%	Rank	(thou.)	%	%	Rank	(thou.)	%	%	Rank
March 2010	(5.2)	(4.8)	9.2	4	(30.9)	(34.9)	5.2	6	(4.1)	(7.2)	4.7	7	(3.8)	(9.2)	3.4	9
April 2010	(5.0)	(4.7)	9.1	4	(26.3)	(30.5)	5.4	6	(3.6)	(6.4)	4.7	7	(2.9)	(7.1)	3.4	9
May 2010	(5.3)	(5.0)	8.9	4	(22.1)	(26.7)	5.4	6	(3.4)	(6.1)	4.6	7	(2.2)	(5.5)	3.4	9
June 2010	(4.9)	(4.7)	8.9	5	(20.7)	(25.4)	5.4	6	(3.6)	(6.5)	4.6	7	(1.6)	(4.0)	3.4	8
July 2010	(4.3)	(4.4)	8.4	5	(19.4)	(24.3)	5.4	6	(2.4)	(4.4)	4.7	7	(1.5)	(3.8)	3.4	8
August 2010	(3.8)	(3.9)	8.4	5	(18.0)	(22.9)	5.4	6	(2.8)	(5.1)	4.7	7	(1.3)	(3.3)	3.4	8
September 2010	(3.9)	(3.8)	8.9	5	(17.6)	(22.9)	5.3	6	(2.4)	(4.4)	4.6	7	(1.3)	(3.3)	3.4	8
October 2010	(3.7)	(3.6)	8.9	5	(15.8)	(21.0)	5.3	6	(2.7)	(5.0)	4.6	7	(1.5)	(3.8)	3.4	9
November 2010	(2.8)	(2.7)	9.0	5	(14.0)	(19.5)	5.2	6	(2.6)	(4.8)	4.6	7	(1.9)	(4.9)	3.3	9
December 2010	(2.5)	(2.4)	8.9	5	(11.1)	(16.6)	5.0	6	(2.4)	(4.5)	4.6	7	(2.3)	(5.9)	3.2	9
January 2011	(2.1)	(2.1)	9.1	5	(6.5)	(11.0)	4.8	6	(2.2)	(4.2)	4.6	7	(1.9)	(5.0)	3.3	8
February 2011	(2.2)	(2.1)	9.1	5	(3.7)	(6.4)	4.9	6	(1.7)	(3.2)	4.6	7	(1.9)	(5.0)	3.2	9
March 2011	(2.5)	(2.4)	9.0	5	(3.4)	(5.9)	4.9	6	(2.7)	(5.1)	4.5	7	(2.0)	(5.3)	3.2	9

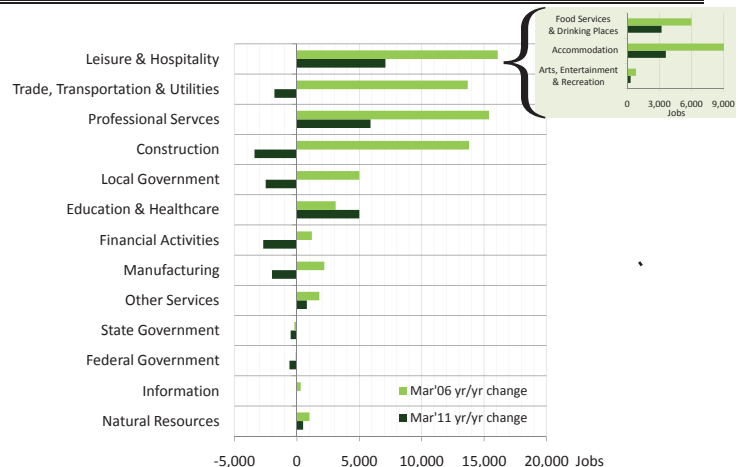
H₀: change>0* No No No No

	Other Services				State Government				Federal Government				Information			
	Yr/Yr Change		Share of Total		Yr/Yr Change		Share of Total		Yr/Yr Change		Share of Total		Yr/Yr Change		Share of Total	
	(thou.)	%	%	Rank	(thou.)	%	%	Rank	(thou.)	%	%	Rank	(thou.)	%	%	Rank
March 2010	(0.6)	(1.8)	3.0	10	0.3	0.8	3.5	8	0.4	2.3	1.6	11	(1.3)	(9.6)	1.1	12
April 2010	(0.1)	(0.3)	3.0	10	0.6	1.6	3.5	8	0.2	1.1	1.7	11	(0.4)	(3.1)	1.1	12
May 2010	(0.1)	(0.3)	3.0	10	0.2	0.5	3.4	8	5.2	29.1	2.0	11	(0.6)	(4.5)	1.1	12
June 2010	(0.1)	(0.3)	3.0	10	0.1	0.3	3.1	9	2.6	14.6	1.8	11	(0.6)	(4.6)	1.1	12
July 2010	0.5	1.5	3.1	9	0.1	0.3	3.1	9	2.3	12.8	1.8	11	(0.4)	(3.1)	1.1	12
August 2010	0.5	1.5	3.1	9	0.2	0.6	3.1	10	0.5	2.8	1.6	11	(0.8)	(6.1)	1.1	13
September 2010	0.4	1.2	3.1	10	0.1	0.3	3.3	9	(0.2)	(1.1)	1.6	11	(0.5)	(3.9)	1.1	13
October 2010	1.0	3.0	3.1	10	(0.1)	(0.3)	3.4	8	(0.5)	(2.8)	1.5	11	(0.4)	(3.1)	1.1	13
November 2010	0.9	2.7	3.1	10	(0.3)	(0.8)	3.4	8	(0.4)	(2.3)	1.5	11	(0.3)	(2.3)	1.1	12
December 2010	0.6	1.8	3.0	10	(0.1)	(0.3)	3.4	8	(0.3)	(1.7)	1.5	11	(0.2)	(1.6)	1.1	12
January 2011	0.8	2.5	3.0	10	(0.1)	(0.3)	3.1	9	(0.4)	(2.3)	1.5	11	0.3	2.4	1.1	12
February 2011	0.9	2.8	3.0	10	(0.4)	(1.1)	3.4	8	(0.2)	(1.2)	1.5	11	0.0	0.0	1.1	12
March 2011	0.8	2.4	3.0	10	(0.5)	(1.3)	3.4	8	(0.6)	(3.4)	1.5	11	0.0	0.0	1.1	12

H₀: change>0* Yes No No No

	Natural Resources				All Non-Farm Jobs			
	Yr/Yr Change		Share of Total		Total	Yr/Yr Change		
	(thou.)	%	%	Rank	(thou.)	(thou.)	%	
March 2010	0.2	1.7	1.1	13	1,108.6	(54.8)	(4.7)	
April 2010	0.3	2.6	1.0	13	1,119.5	(38.9)	(3.4)	
May 2010	0.5	4.3	1.1	13	1,127.5	(28.5)	(2.5)	
June 2010	0.5	4.2	1.1	13	1,123.3	(24.3)	(2.1)	
July 2010	0.8	6.7	1.1	12	1,115.6	(18.0)	(1.6)	
August 2010	0.8	6.7	1.1	12	1,113.0	(15.0)	(1.3)	
September 2010	0.7	6.0	1.1	12	1,115.0	(20.5)	(1.8)	
October 2010	0.8	6.8	1.1	12	1,118.0	(17.4)	(1.5)	
November 2010	0.9	7.8	1.1	13	1,116.6	(18.0)	(1.6)	
December 2010	0.8	6.9	1.1	13	1,120.4	(13.7)	(1.2)	
January 2011	0.7	6.1	1.1	13	1,099.2	(4.8)	(0.4)	
February 2011	0.7	6.1	1.1	13	1,103.9	(1.6)	(0.1)	
March 2011	0.5	4.3	1.1	13	1,114.4	5.8	0.5	

H₀: change>0* Yes No



* Statistical significance tested using Wilcoxon Signed Rank Test for most recent 7 months.

