

# The SILVER SAGE

AN OVERVIEW OF NEVADA'S ECONOMY BY THE SAGES AT THE DEPARTMENT OF ADMINISTRATION



		US Rate	Nevada Rate	Rank
				1 = worst
Foreclosure Filings Rate	Sep '11	0.2%	0.8%	1
Home Price Index (FHFA)	2011q2 v 2010q2	-5.9%	-13.4%	4
	2011q2 v 2006q2	-18.8%	-58.1%	1
Wage & Salary Disbursements	2011q2 v 2010q2	4.0%	1.7%	3
Personal Income	2011q2 v 2010q2	5.4%	3.7%	1
Employment*	Sep '11 v Sep '10	1.1%	0.6%	18
Unemployment**	Sep '11	9.1%	13.4%	1

\*Not seasonally adjusted.  
\*\*Seasonally adjusted.

Learn from the mistakes of others.  
You can never live long enough to make them all yourself.  
— Groucho Marx

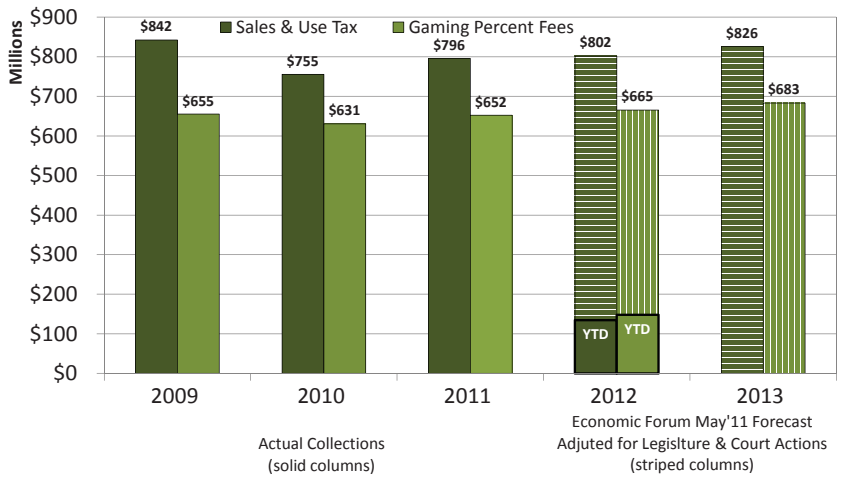
## State General Fund Revenues May 2011 Economic Forum Forecast Adjusted for Legislature & Court Actions v Actual

	FY 2011 Actual		FY 2012 Economic Forum Forecast			Through FY Month/Quarter	FY 2012 Collections						FY 2011 2 <sup>nd</sup> Half Yr/Yr Change Actual
	Total	Yr/Yr Change	Total	Yr/Yr Change			Most Recent Period			Year-To-Date			
				millions	%		Actual	Over (Under) Budget	Yr/Yr Change Actual	Actual	Over (Under) Budget	Yr/Yr Change Actual	
<b>General Fund Revenue Sources</b>			millions	millions	%		millions	millions	%	millions	millions	%	%
Sales Tax	\$795.6	5.3	\$802.1	\$6.5	0.8	M-2	\$67.2	\$0.1	3.3	\$134.7	\$2.2	4.2	6.8
Gaming Percentage Fees Collections*	652.2	3.4	665.4	13.2	2.0	M-3	47.2	(7.2)	(23.6)	148.0	(8.3)	(4.2)	4.2
Modified Business Tax <sup>1</sup>	381.9	(0.8)	355.0	(26.9)	(7.0)	Q-0	0.0	0.0	n/a	0.0	0.0	n/a	1.1
Insurance Premium Tax	234.8	0.4	239.9	5.1	2.2	Q-0	0.0	0.0	n/a	0.0	0.0	n/a	(2.9)
Live Entertainment Tax - Gaming	118.5	9.5	117.5	(1.0)	(0.9)	M-2	10.6	0.9	19.8	22.4	2.5	22.4	17.3
Lodging Tax <sup>2</sup>	112.6	15.3	0.0	(112.6)	(100.0)	n/a	n/a	n/a	n/a	n/a	n/a	n/a	18.1
Cigarette Tax <sup>1</sup>	86.0	(2.9)	83.8	(2.2)	(2.6)	M-2	7.7	0.1	3.9	14.5	0.5	3.4	(2.9)
Commercial Recordings	73.6	7.1	75.7	2.1	2.9	M-3	5.0	(1.1)	(13.4)	15.9	(2.4)	(13.8)	(0.3)
Real Property Transfer Tax	51.6	(3.3)	50.4	(1.2)	(2.3)	Q-1**	13.4	(0.7)	6.8	13.4	13.4	(2.3)	4.3
Liquor Tax <sup>1</sup>	39.5	2.8	39.4	(0.0)	(0.1)	M-2	3.3	0.3	11.1	6.7	0.6	12.6	4.0
Governmental Services Tax	61.5	19.9	61.0	(0.6)	(1.0)	M-2	7.4	2.0	37.2	14.6	4.1	37.2	0.6
Business License Fee	54.5	29.9	59.9	5.4	10.0	M-3	4.6	0.1	13.1	13.9	(0.8)	3.7	(1.2)
State Share LSST & Various Local SUT <sup>1</sup>	30.7	5.9	31.2	0.4	1.5	M-2	2.6	0.0	3.1	5.2	0.1	4.3	7.0
Live Entertainment Tax - NonGaming	12.1	5.4	10.9	(1.2)	(9.8)	M-2	1.1	(0.3)	(54.4)	1.9	(0.3)	(41.0)	(12.2)
Other General Fund Revenues <sup>1</sup>	363.0	15.2	290.1	(72.9)	(20.1)	M-3	12.1	2.6	1.7	25.7	6.9	8.9	17.9
Year-End Transfers <sup>1</sup>	107.4	9.2	100.7	(6.7)	(6.2)	M-0	0.0	0.0	n/a	0.0	0.0	n/a	9.2
<b>Totals</b>	<b>\$3,175.4</b>	<b>5.6</b>	<b>\$2,982.9</b>	<b>(\$192.5)</b>	<b>(6.1)</b>		<b>\$182.0</b>	<b>(\$3.1)</b>	<b>(4.4)</b>	<b>\$416.9</b>	<b>\$18.5</b>	<b>2.9</b>	<b>6.4</b>
*Percentage Fees net of EFA	\$648.2	1.1	\$660.4	\$12.2	1.9	M-3	\$54.5	(\$0.6)	(7.0)	\$159.9	(\$3.0)	(0.3)	1.4
Local School Support Tax	\$1,019.8	6.4	\$1,034.9	\$15.1	1.5	M-2	\$86.6	\$0.4	4.0	\$173.4	\$2.9	5.0	7.3

\*\*Current quarter based on preliminary amounts reported by the Controller.

<sup>1</sup> Forecasts for these revenues have been adjusted to reflect legislative and court actions.

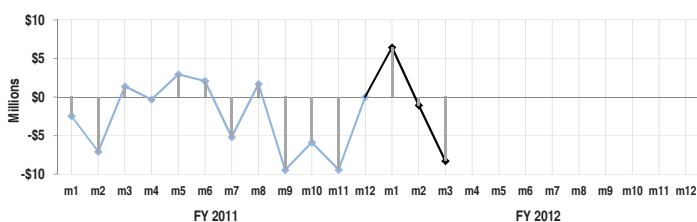
<sup>2</sup> Beginning in FY 2012, revenues from the lodging tax are being deposited in the Distributive School Account and are not included in the General Fund.



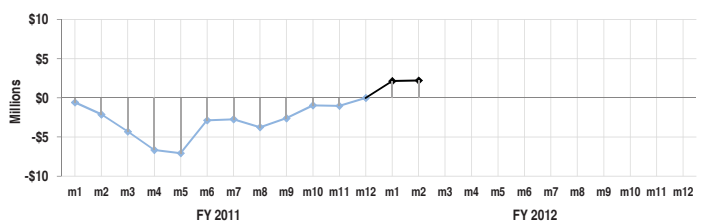
### Cumulative Difference Between Actual and Forecast

Positive numbers indicate actual collections ahead of forecast for the indicated fiscal year. The monthly forecasts are based upon the May 2011 Economic Forum projections, assuming a historically derived distribution for monthly collections.

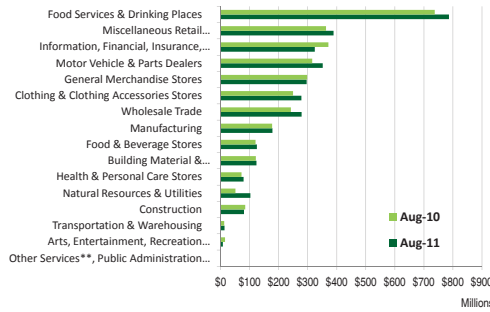
#### Gaming Percentage Fees Collections



#### Sales and Use Tax Collections



# Statewide Taxable Sales & Use by Industry



	Total (millions)	Year/Year Change (millions)	%
August 2010	\$3,225.4	\$149.1	4.8
September 2010	3,244.0	67.4	2.1
October 2010	3,137.1	68.6	2.2
November 2010	3,097.6	80.8	2.7
December 2010	4,063.5	407.9	11.2
January 2011	3,008.8	186.2	6.6
February 2011	2,923.8	120.0	4.3
March 2011	3,648.5	319.3	9.6
April 2011	3,357.1	74.2	2.3
May 2011	3,360.8	226.9	7.2
June 2011	3,629.0	298.2	9.0
July 2011	3,391.6	152.1	4.7
August 2011	3,409.5	184.1	5.7

Food Services & Drinking Places (722)				Miscellaneous Retail & Non-Retail Stores* (442, 443, 447, 451, 453, 454)				Information, Financial, Insurance, Real Estate, Renting & Leasing (511-533)				Motor Vehicle & Parts Dealers (441)				
Year/Year Change		Share of Total		Year/Year Change		Share of Total		Year/Year Change		Share of Total		Year/Year Change		Share of Total		
(millions)	%	%	Rank	(millions)	%	%	Rank	(millions)	%	%	Rank	(millions)	%	%	Rank	
August 2010	\$60.8	9.0	22.9	1	\$23.6	7.0	11.2	3	\$54.9	17.4	11.5	2	(\$22.1)	(6.6)	9.8	4
September 2010	22.2	3.3	21.4	1	22.2	6.2	11.7	2	(22.2)	(6.1)	10.5	3	40.2	15.1	9.5	4
October 2010	68.6	10.3	23.4	1	24.7	6.9	12.1	2	(37.6)	(10.9)	9.8	3	19.8	7.5	9.1	5
November 2010	27.1	4.4	20.9	1	29.2	7.9	12.9	2	(27.6)	(8.8)	9.2	5	56.6	24.4	9.3	4
December 2010	85.6	14.8	16.3	1	15.5	3.1	12.6	2	2.3	0.6	9.2	4	32.6	12.3	7.3	7
January 2011	63.9	9.6	24.3	1	22.0	6.6	11.7	2	26.0	8.9	10.6	3	32.5	12.5	9.7	4
February 2011	12.9	2.0	23.1	1	9.9	2.9	11.9	2	(20.3)	(6.8)	9.5	5	43.9	17.6	10.0	3
March 2011	90.1	12.1	23.0	1	48.5	12.3	12.1	2	28.1	8.1	10.3	3	46.1	15.0	9.7	4
April 2011	40.2	5.3	23.7	1	68.5	19.3	12.6	2	15.4	5.1	9.5	4	36.6	12.5	9.8	3
May 2011	42.5	5.5	24.2	1	27.2	7.7	11.3	2	20.9	7.0	9.5	4	37.0	12.1	10.2	3
June 2011	114.0	15.8	23.0	1	29.8	7.6	11.6	2	(10.6)	(2.7)	10.3	3	44.6	15.0	9.4	4
July 2011	81.3	11.1	24.0	1	19.4	5.2	11.6	2	(39.7)	(11.2)	9.3	4	17.6	5.4	10.1	3
August 2011	49.0	6.6	23.1	1	25.7	7.1	11.4	2	(46.6)	(12.6)	9.5	4	36.0	11.4	10.3	3

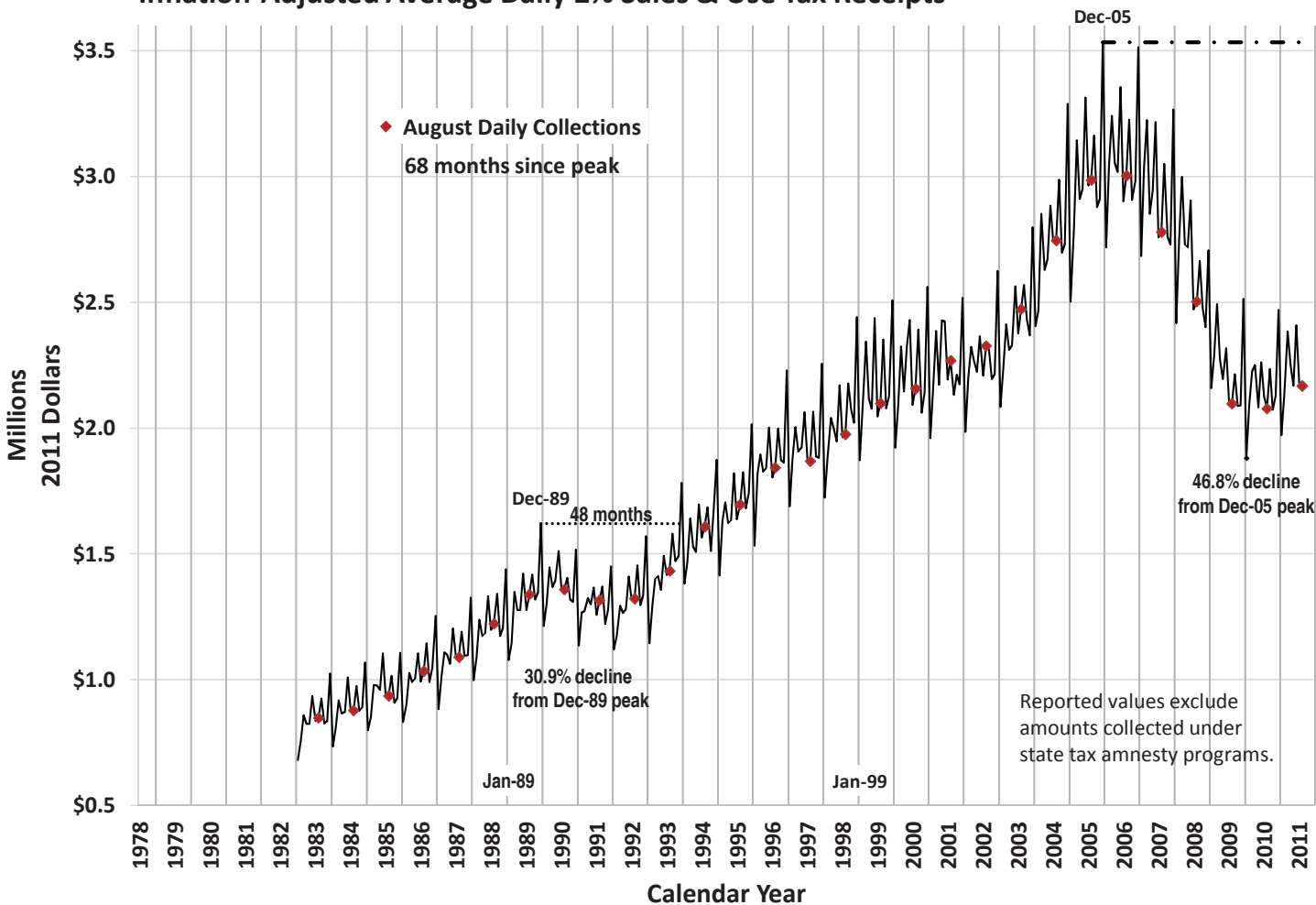
General Merchandise Stores (452)				Clothing & Clothing Accessories Stores (448)				Wholesale Trade (423-425)				Manufacturing (311-339)				
Year/Year Change		Share of Total		Year/Year Change		Share of Total		Year/Year Change		Share of Total		Year/Year Change		Share of Total		
(millions)	%	%	Rank	(millions)	%	%	Rank	(millions)	%	%	Rank	(millions)	%	%	Rank	
August 2010	\$6.3	2.2	9.2	5	\$28.0	12.7	7.7	6	\$0.7	0.3	7.5	7	\$39.3	28.6	5.5	8
September 2010	8.2	2.9	9.0	5	21.0	8.7	8.1	7	(8.6)	(3.2)	8.1	6	12.9	7.5	5.7	8
October 2010	0.9	0.3	9.3	4	22.4	10.0	7.8	7	9.8	4.1	7.9	6	(7.5)	(4.6)	4.9	8
November 2010	3.9	1.1	11.3	3	24.6	9.9	8.8	6	(0.0)	(0.0)	7.3	7	(0.5)	(0.3)	5.0	8
December 2010	(1.0)	(0.2)	12.2	3	22.3	6.5	9.0	6	19.5	7.6	6.8	8	(6.6)	(3.1)	5.0	9
January 2011	(11.0)	(4.1)	8.6	5	24.7	12.4	7.5	7	20.8	9.8	7.8	6	10.2	7.0	5.2	8
February 2011	(5.8)	(2.0)	9.6	4	24.9	11.5	8.2	6	9.3	4.3	7.7	7	41.0	36.9	5.2	8
March 2011	(5.7)	(1.6)	9.4	5	24.2	9.4	7.7	7	54.0	21.0	8.5	6	13.6	8.0	5.1	8
April 2011	4.9	1.7	8.6	5	54.9	24.0	8.5	6	13.9	5.8	7.6	7	(119.3)	(43.3)	4.7	8
May 2011	(15.7)	(5.1)	8.7	5	33.0	13.6	8.2	6	30.6	13.5	7.6	7	16.0	11.4	4.7	8
June 2011	1.9	0.6	8.7	5	39.7	15.6	8.1	7	36.1	14.0	8.1	6	49.8	31.4	5.7	8
July 2011	(1.3)	(0.4)	8.4	5	40.3	17.1	8.2	6	26.2	10.8	7.9	7	(3.4)	(2.0)	5.0	8
August 2011	(1.9)	(0.6)	8.7	5	28.8	11.5	8.2	7	36.7	15.2	8.2	6	1.1	0.6	5.2	8

Food & Beverage Stores (445)				Building Material & Garden Equipment & Supplies (444)				Health & Personal Care Stores (446)				Natural Resources & Utilities (111-221)				
Year/Year Change		Share of Total		Year/Year Change		Share of Total		Year/Year Change		Share of Total		Year/Year Change		Share of Total		
(millions)	%	%	Rank	(millions)	%	%	Rank	(millions)	%	%	Rank	(millions)	%	%	Rank	
August 2010	(\$6.9)	(5.5)	3.7	10	\$2.3	1.9	3.8	9	(\$21.2)	(22.8)	2.2	12	\$14.5	40.3	1.6	13
September 2010	1.3	1.1	3.9	9	(7.8)	(6.1)	3.7	10	(0.1)	(0.1)	3.1	11	1.2	2.4	1.5	13
October 2010	(2.9)	(2.3)	3.9	10	(4.3)	(3.4)	3.9	9	(0.5)	(0.5)	3.1	11	9.6	25.2	1.5	13
November 2010	1.2	1.0	4.1	9	(0.6)	(0.6)	3.5	10	8.0	9.0	3.1	11	(8.1)	(16.0)	1.4	13
December 2010	(6.1)	(3.6)	4.0	10	(1.4)	(1.3)	2.6	12	(3.2)	(2.4)	3.3	11	254.4	217.6	9.1	5
January 2011	(1.3)	(1.1)	3.8	9	0.1	0.1	3.4	10	4.7	5.6	3.0	11	2.7	6.3	1.5	13
February 2011	2.1	1.8	4.0	9	(5.3)	(5.3)	3.2	10	2.6	3.1	3.0	11	7.6	17.4	1.8	13
March 2011	(2.4)	(1.9)	3.4	10	(5.0)	(3.8)	3.4	9	4.1	4.3	2.7	11	22.5	53.2	1.8	13
April 2011	1.6	1.3	3.8	10	0.3	0.2	4.3	9	5.0	5.7	2.8	11	(29.3)	(38.1)	1.4	13
May 2011	(2.5)	(2.0)	3.7	10	(1.1)	(0.8)	4.0	9	4.6	5.1	2.8	11	14.3	36.6	1.6	13
June 2011	(0.4)	(0.3)	3.5	10	2.8	1.9	4.1	9	4.9	5.1	2.8	11	12.9	23.7	1.9	13
July 2011	0.7	0.6	3.6	10	(1.8)	(1.3)	4.1	9	5.2	6.6	2.5	12	16.5	27.2	2.3	13
August 2011	4.9	4.1	3.7	9	2.1	1.7	3.6	10	7.1	9.9	2.3	13	51.5	102.1	3.0	11

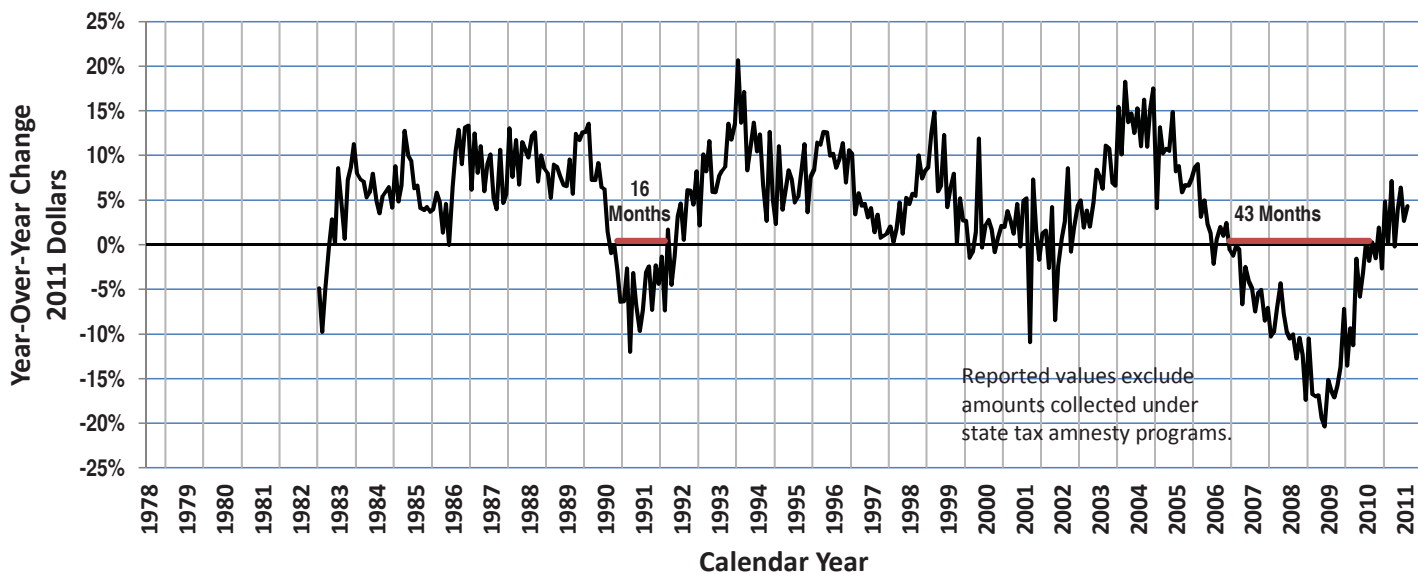
Construction (236-238)				Transportation & Warehousing (481-493)				Arts, Entertainment, Recreation & Accommodation (711-721)				Other Services**, Public Administration & Miscellaneous (541-624, 811-999)				
Year/Year Change		Share of Total		Year/Year Change		Share of Total		Year/Year Change		Share of Total		Year/Year Change		Share of Total		
(millions)	%	%	Rank	(millions)	%	%	Rank	(millions)	%	%	Rank	(millions)	%	%	Rank	
August 2010	(\$28.8)	(25.5)	2.6	11	(\$3.1)	(20.7)	0.4	15	\$1.2	9.0	0.5	14	(\$0.4)	(45.9)	0.0	16
September 2010	(23.3)	(20.8)	2.7	12	(0.3)	(1.8)	0.4	14	0.4	3.3	0.4	15	0.1	5.9	0.1	16
October 2010	(37.3)	(34.1)	2.3	12	1.6	14.4	0.4	15	1.4	10.3	0.5	14	(0.0)	(1.4)	0.0	16
November 2010	(34.2)	(33.8)	2.2	12	0.8	6.7	0.4	15	0.5	4.4	0.4	14	(0.0)	(5.9)	0.0	16
December 2010	(9.0)	(10.9)	1.8	13	1.2	9.7	0.3	14	1.7	14.8	0.3	15	0.2	9.1	0.0	16
January 2011	(10.9)	(14.7)	2.1	12	0.8	7.3	0.4	15	1.3	9.6	0.5	14	(0.2)	(19.9)	0.0	16
February 2011	(7.3)	(12.3)	1.8	12	4.7	40.2	0.6	14	0.3	2.0	0.5	15	(0.6)	(51.7)	0.0	16
March 2011	3.8	5.4	2.1	12	(4.6)	(25.6)	0.4	15	1.8	12.1	0.5	14	0.2	14.1	0.0	16
April 2011	(26.7)	(31.6)	1.7	12	7.3	56.5	0.6	14	0.8	5.3	0.5	15	(0.1)	(10.1)	0.0	16
May 2011	20.8	34.8	2.4	12	5.6	38.3	0.6	14	(3.7)	(20.9)	0.4	15	(2.5)	(68.2)	0.0	16
June 2011	(15.5)	(17.0)	2.1	12	(2.9)	(16.5)	0.4	14	(8.7)	(60.9)	0.2	15	(0.1)	(19.0)	0.0	16
July 2011	2.9	3.5	2.5	11	(2.7)	(16.5)	0.4	14	(8.8)	(60.8)	0.2	15	(0.3)	(49.4)	0.0	16
August 2011	(4.2)	(5.0)	2.3	12	1.4	11.7	0.4	14	(7.4)	(50.8)	0.2	15	(0.1)	(22.7)	0.0	16

\* Statistically significant outliers in most recent month's data  
 \*\* Other Services includes Professional, Management, Administration, Education and Health Services.

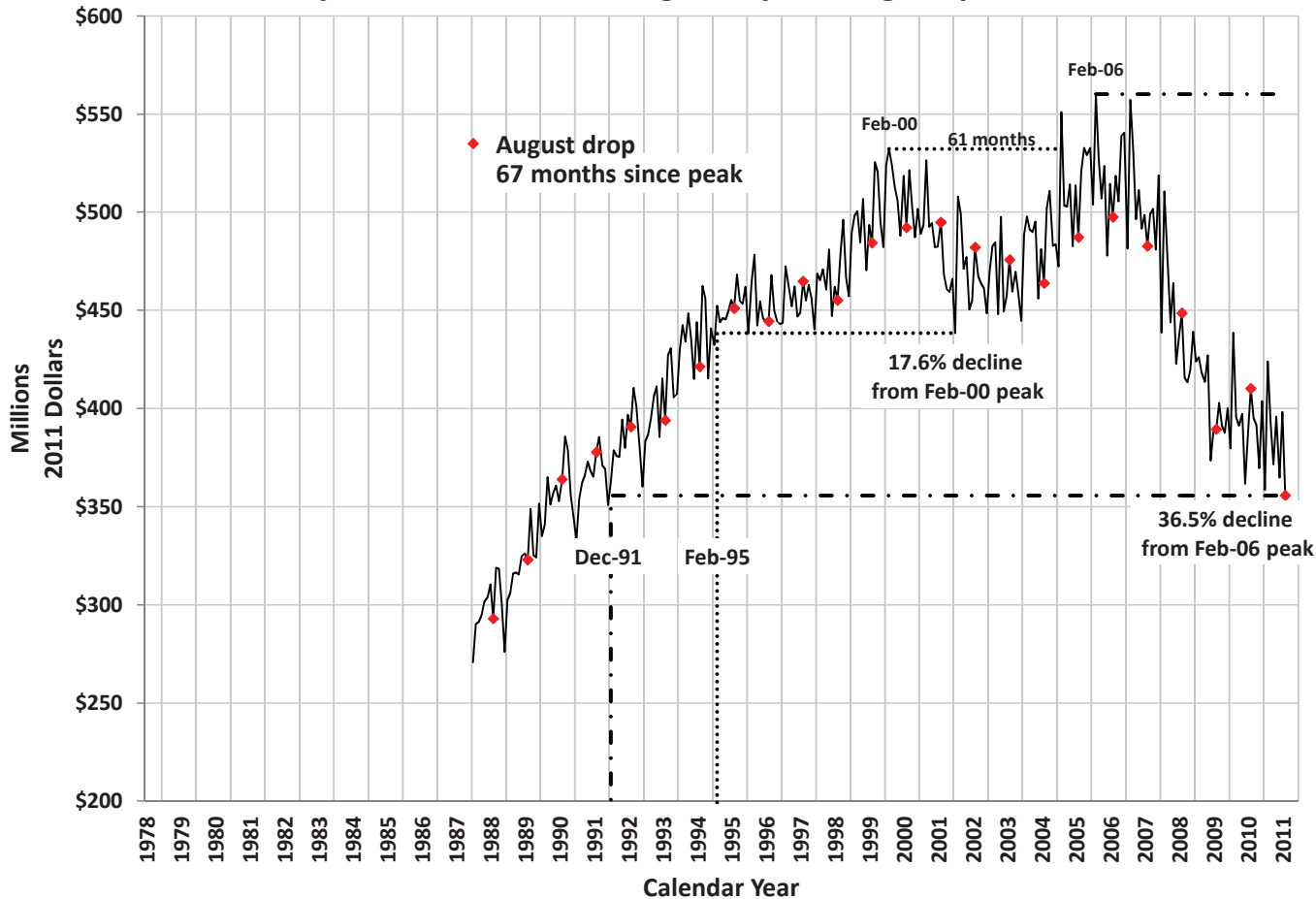
### Inflation-Adjusted Average Daily 2% Sales & Use Tax Receipts



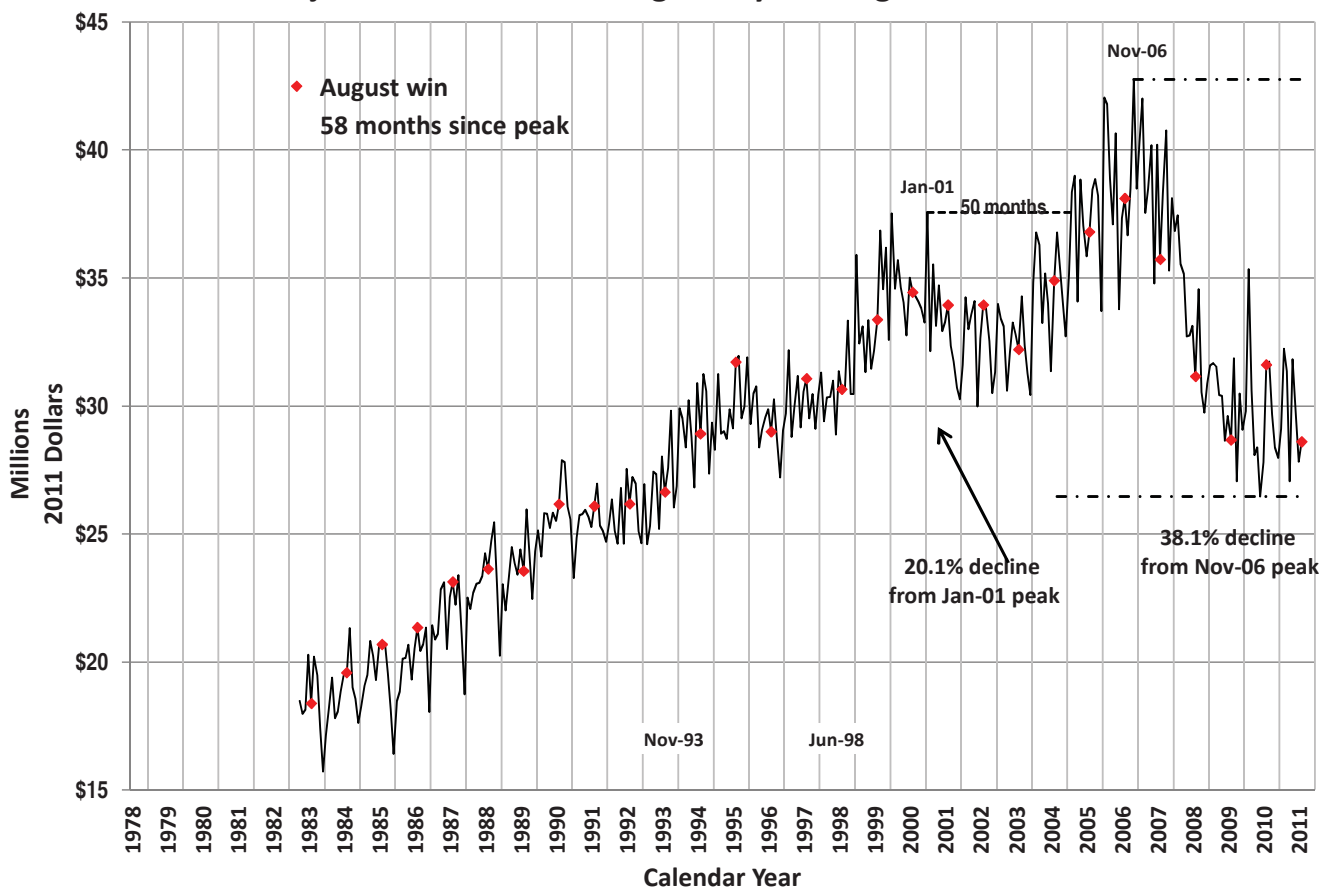
### Inflation-Adjusted Daily Sales & Use Tax Collections



### Inflation-Adjusted Statewide Average Daily Gaming Drop



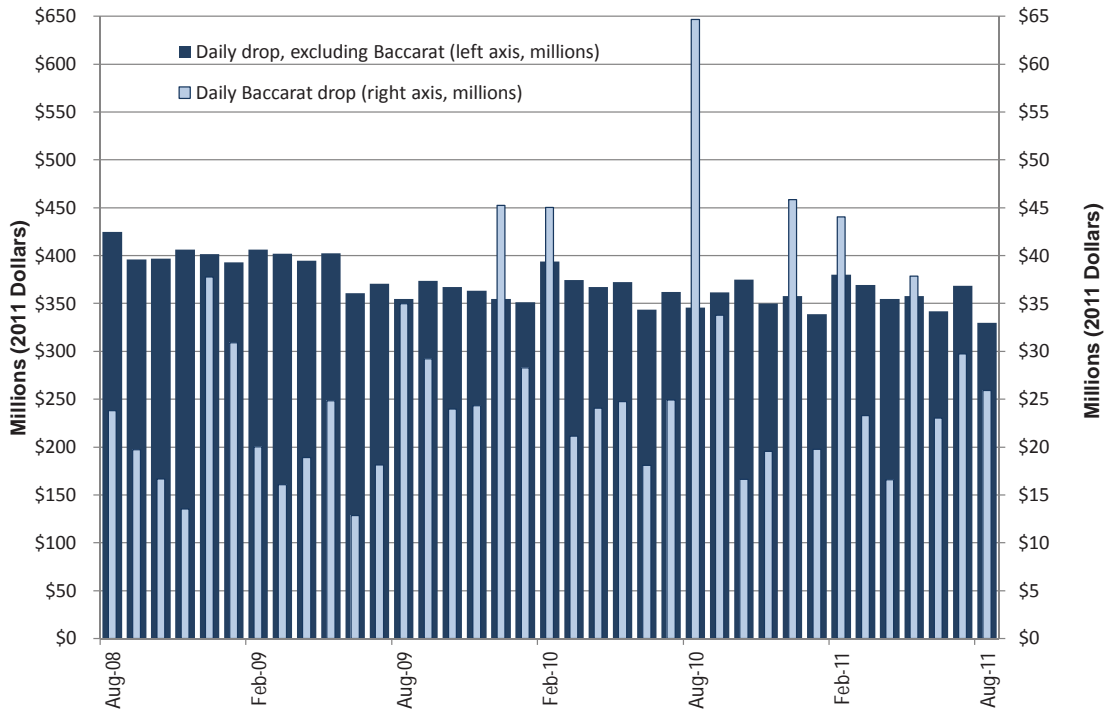
### Inflation-Adjusted Statewide Average Daily Gaming Win



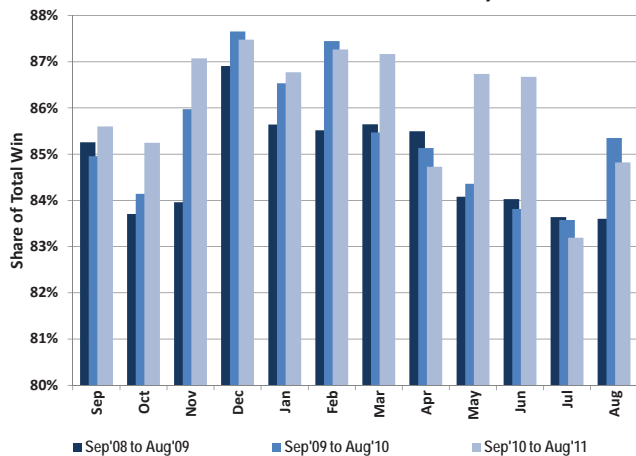
### Recent Statewide Gaming Statistics

Inflation-Adjusted Statewide Average Daily Gaming Activity										
Date	Slots		Games Excluding Baccarat		Baccarat		Tables	Total	Taxable	Pct.Fee due
	Coin-In	Win	Amt.Played	Win	Amt.Played	Win	Win	Win	Win	after EFA
	Yr/Yr Pct. Chg.	Yr/Yr Pct. Chg.	Yr/Yr Pct. Chg.	Yr/Yr Pct. Chg.	Yr/Yr Pct. Chg.	Yr/Yr Pct. Chg.	Yr/Yr Pct. Chg.	Yr/Yr Pct. Chg.	Yr/Yr Pct. Chg.	Yr/Yr Pct. Chg.
Aug-09	(15.7)	(6.9)	(21.8)	(27.7)	46.9	50.7	(13.5)	(8.0)	(9.2)	(9.3)
Sep-09	(5.8)	(13.7)	(4.4)	(3.5)	48.1	30.8	(2.3)	(7.8)	(14.1)	(15.2)
Oct-09	(7.3)	(11.9)	(8.2)	(22.5)	43.9	61.7	(6.8)	(11.4)	(11.0)	(11.9)
Nov-09	(11.8)	(3.3)	(2.9)	(5.4)	79.7	132.6	(9.7)	2.5	4.4	27.1
Dec-09	(12.1)	(13.6)	(8.6)	(21.4)	19.8	97.3	(11.5)	(5.8)	(17.0)	(3.6)
Jan-10	(12.1)	(7.1)	(2.2)	(8.2)	(8.5)	9.5	(11.3)	(5.7)	3.4	14.3
Feb-10	(4.4)	(8.9)	5.3	1.1	124.8	250.9	(7.4)	11.5	(13.4)	(30.1)
Mar-10	(8.4)	(4.9)	2.2	(5.3)	31.4	55.0	(11.9)	(2.9)	(0.3)	5.8
Apr-10	(8.5)	(10.4)	3.5	(3.9)	27.1	9.2	(11.4)	(7.7)	(11.4)	(25.4)
May-10	(9.3)	(1.6)	4.1	(6.2)	(0.3)	(36.7)	(10.5)	(6.6)	0.7	17.1
Jun-10	(6.8)	(3.7)	9.1	(5.8)	40.7	(61.6)	(6.7)	(7.6)	(1.8)	(5.6)
Jul-10	(4.7)	(10.2)	12.1	0.5	37.4	7.8	(5.2)	(6.1)	(12.1)	(14.0)
Aug-10	(4.1)	4.9	7.9	6.8	85.0	45.0	(10.4)	10.2	10.3	20.4
Sep-10	(4.2)	(3.5)	2.0	(4.7)	15.6	28.2	(8.0)	(0.4)	1.7	5.3
Oct-10	(0.8)	1.4	19.2	24.7	(30.8)	38.1	(6.0)	9.7	2.8	19.8
Nov-10	(4.4)	1.6	0.3	(19.3)	(19.5)	(27.7)	(8.5)	(6.9)	(1.9)	(12.9)
Dec-10	(0.5)	(8.3)	8.2	7.2	1.3	(1.9)	(6.4)	(3.8)	(5.0)	(23.1)
Jan-11	(3.7)	3.9	(3.1)	1.6	(30.1)	(40.7)	(9.4)	(2.3)	7.3	17.8
Feb-11	(5.2)	(2.5)	6.3	(0.3)	(2.3)	(33.0)	(9.2)	(8.8)	(11.3)	(15.4)
Mar-11	(3.1)	(3.9)	8.7	9.2	10.1	50.9	(8.3)	2.4	(4.9)	(3.3)
Apr-11	(2.6)	(5.1)	(7.6)	1.1	(31.1)	(5.2)	(7.7)	(3.6)	5.9	2.7
May-11	(3.9)	2.3	(4.2)	7.2	52.7	122.0	(8.4)	12.2	(0.3)	9.2
Jun-11	(1.6)	(2.5)	5.5	11.6	27.3	458.6	(0.6)	12.0	3.1	18.3
Jul-11	1.5	(0.0)	3.3	(5.5)	19.3	16.3	2.0	0.0	(4.1)	(13.1)
Aug-11	(4.8)	(2.8)	(2.4)	(2.8)	(59.9)	(42.1)	(100.0)	(9.5)	(10.1)	(19.6)

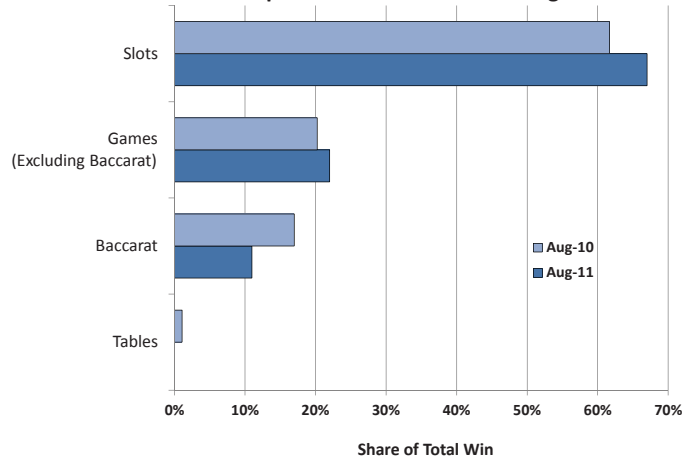
### Inflation-Adjusted Statewide Average Daily Drop



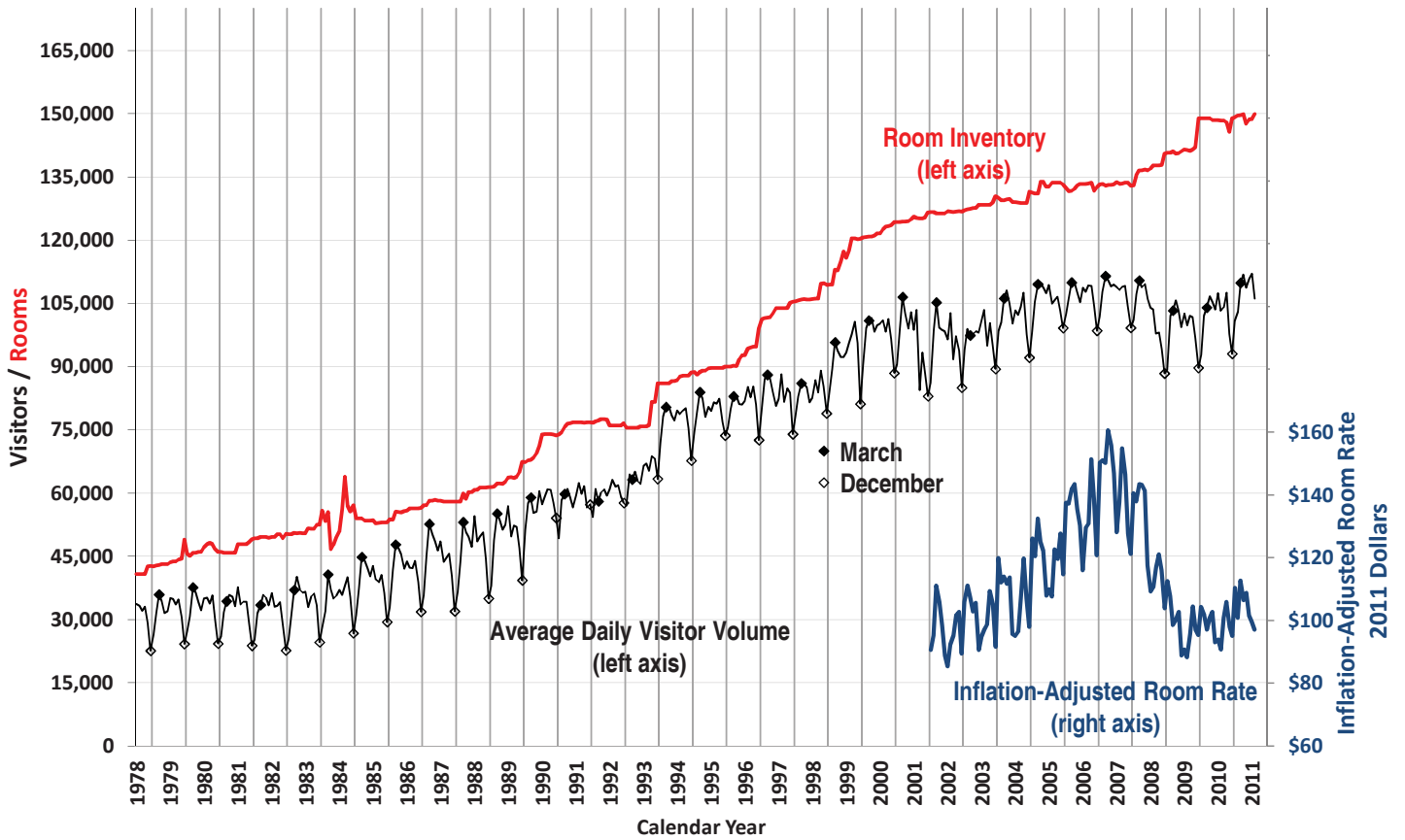
### Share of Statewide Win from Clark County



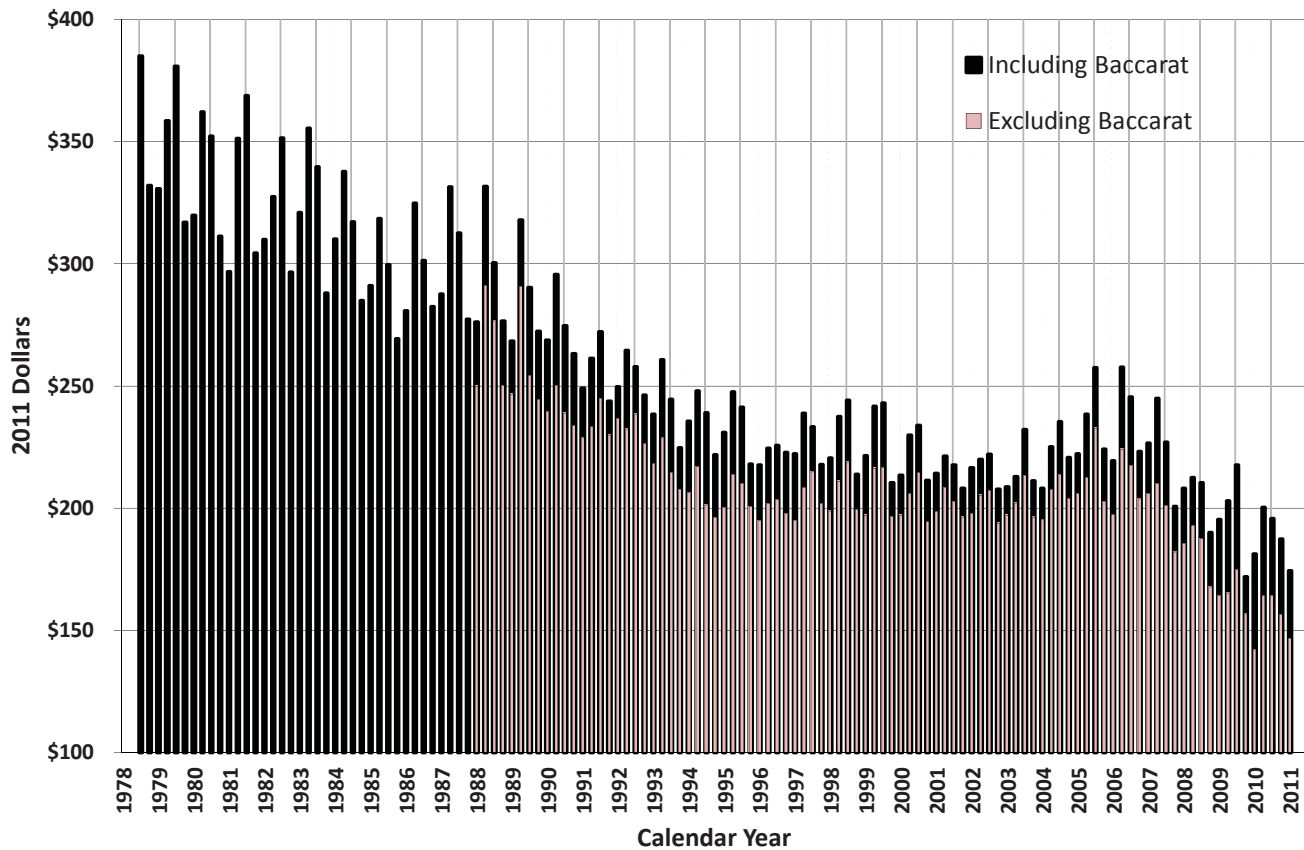
### Components of Statewide Gaming Win



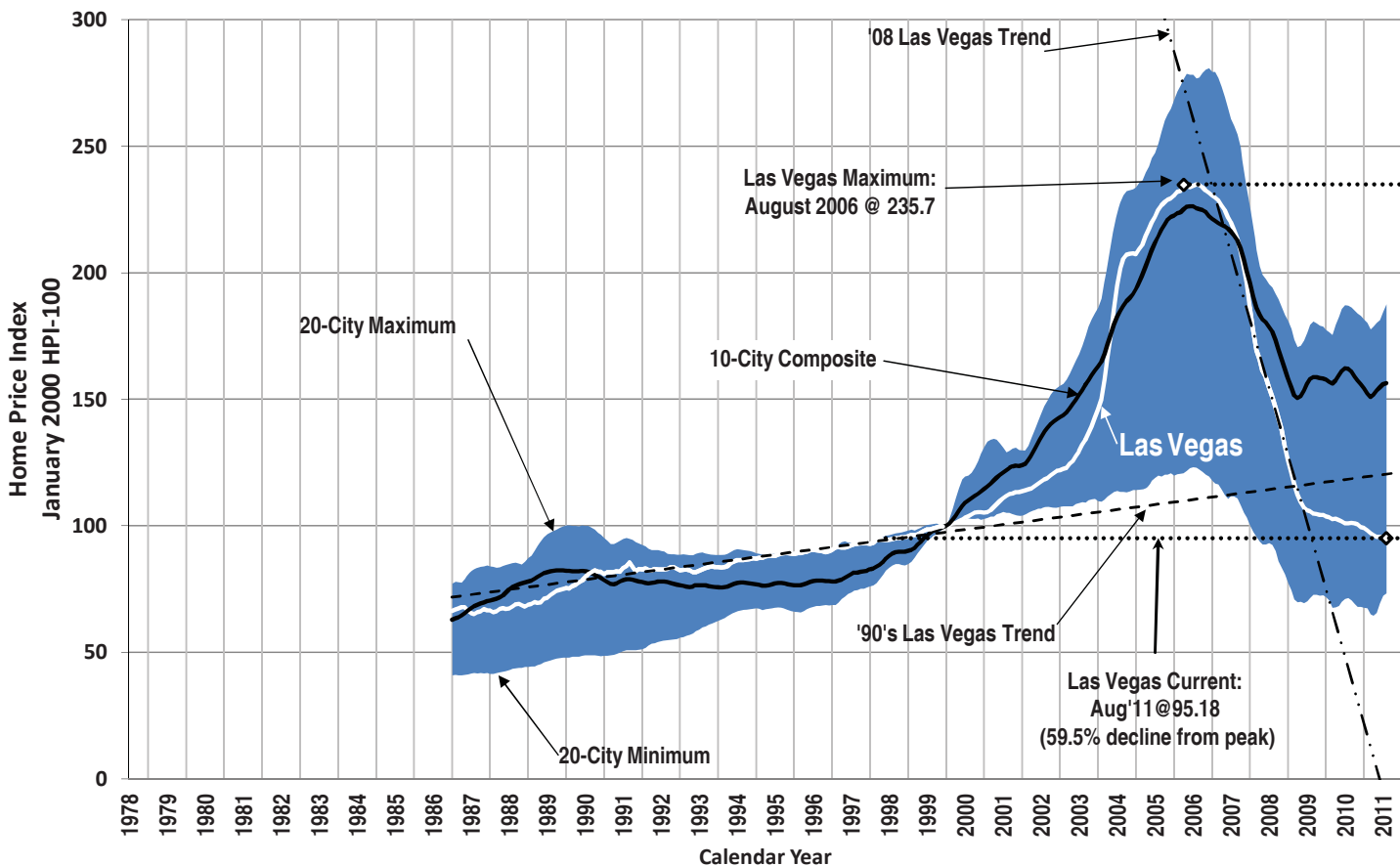
### Las Vegas Visitors vs. Rooms



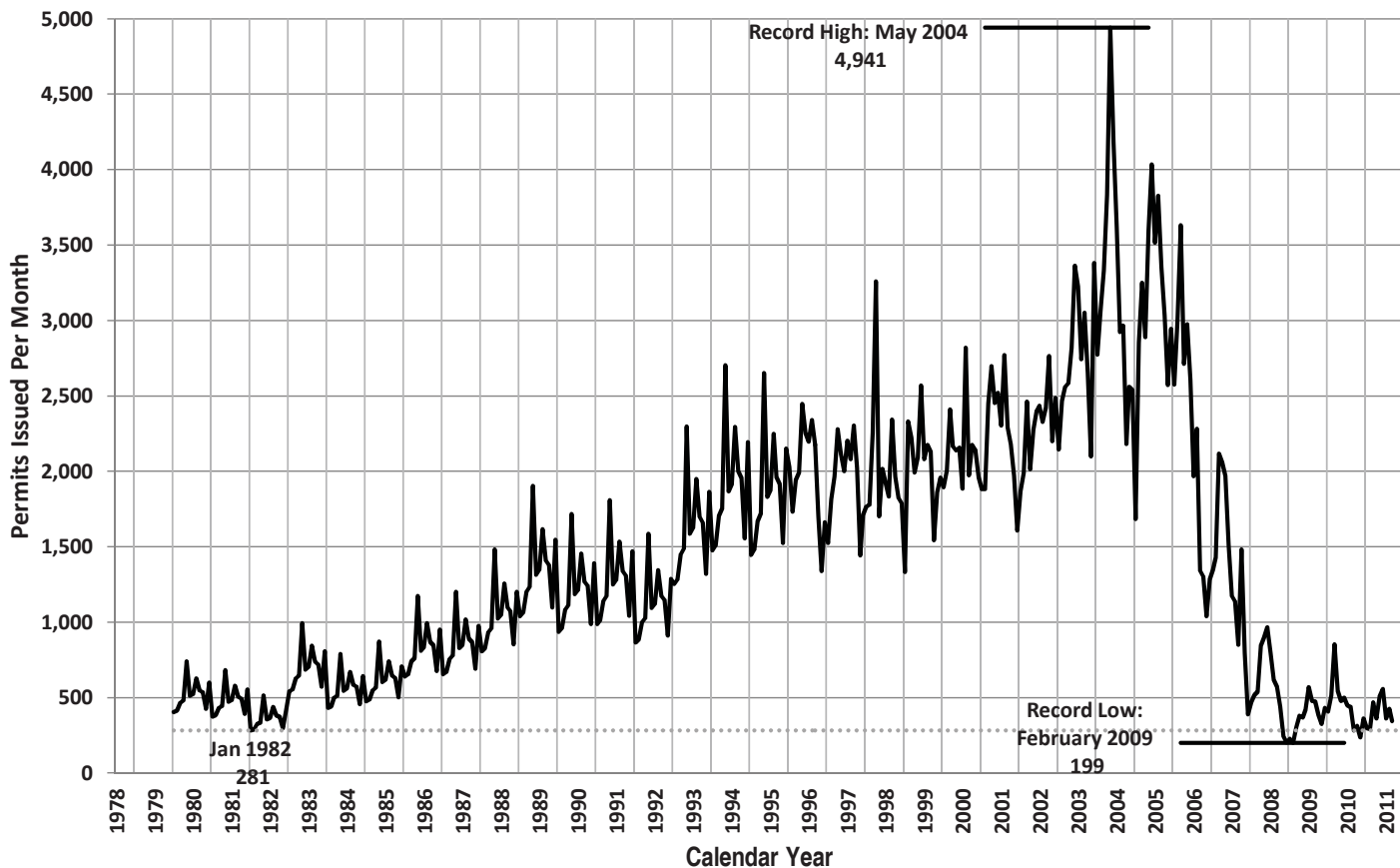
### Inflation-Adjusted Average Las Vegas Gaming Win per Visitor



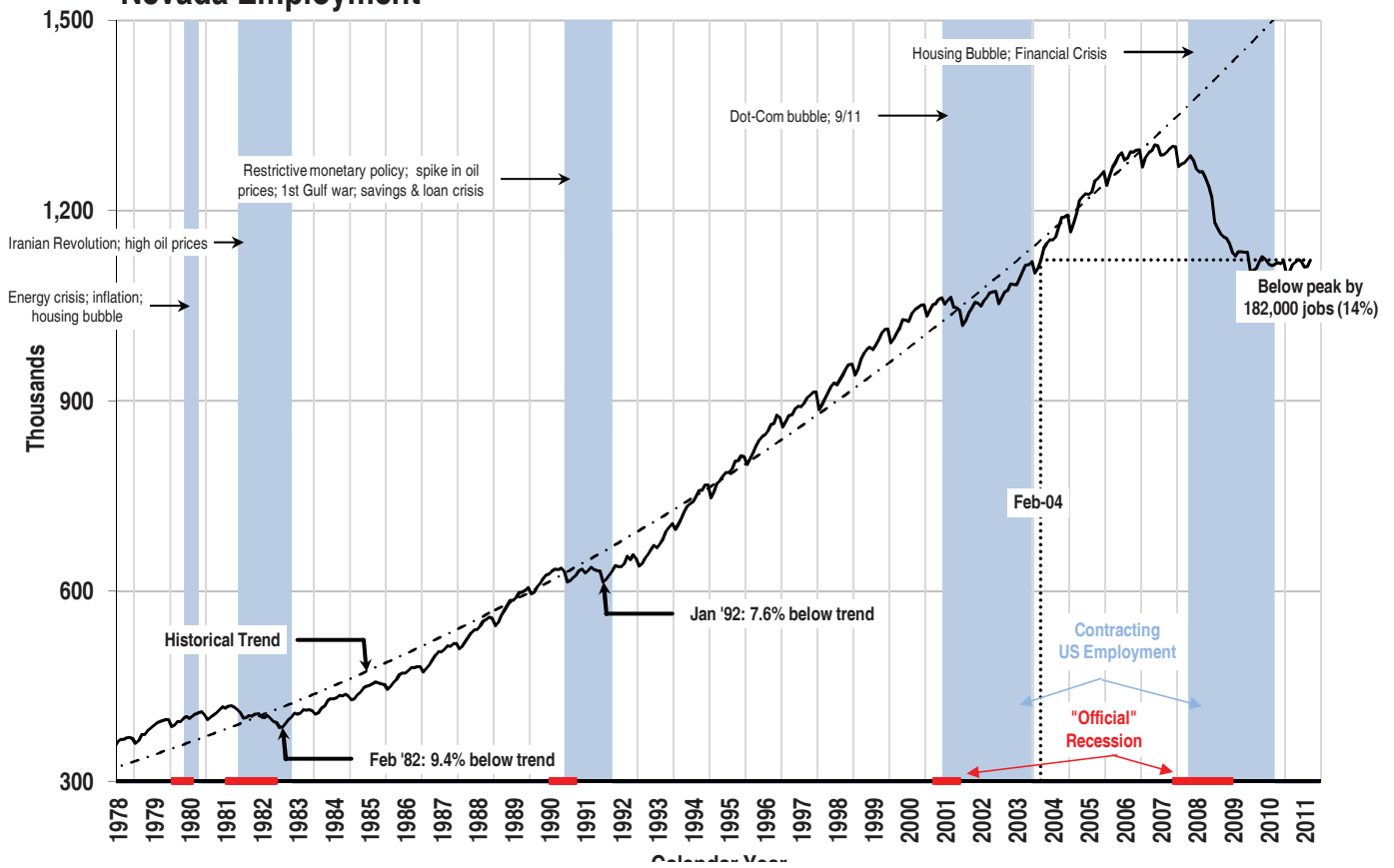
### Case-Shiller Seasonally Adjusted Home Price Index



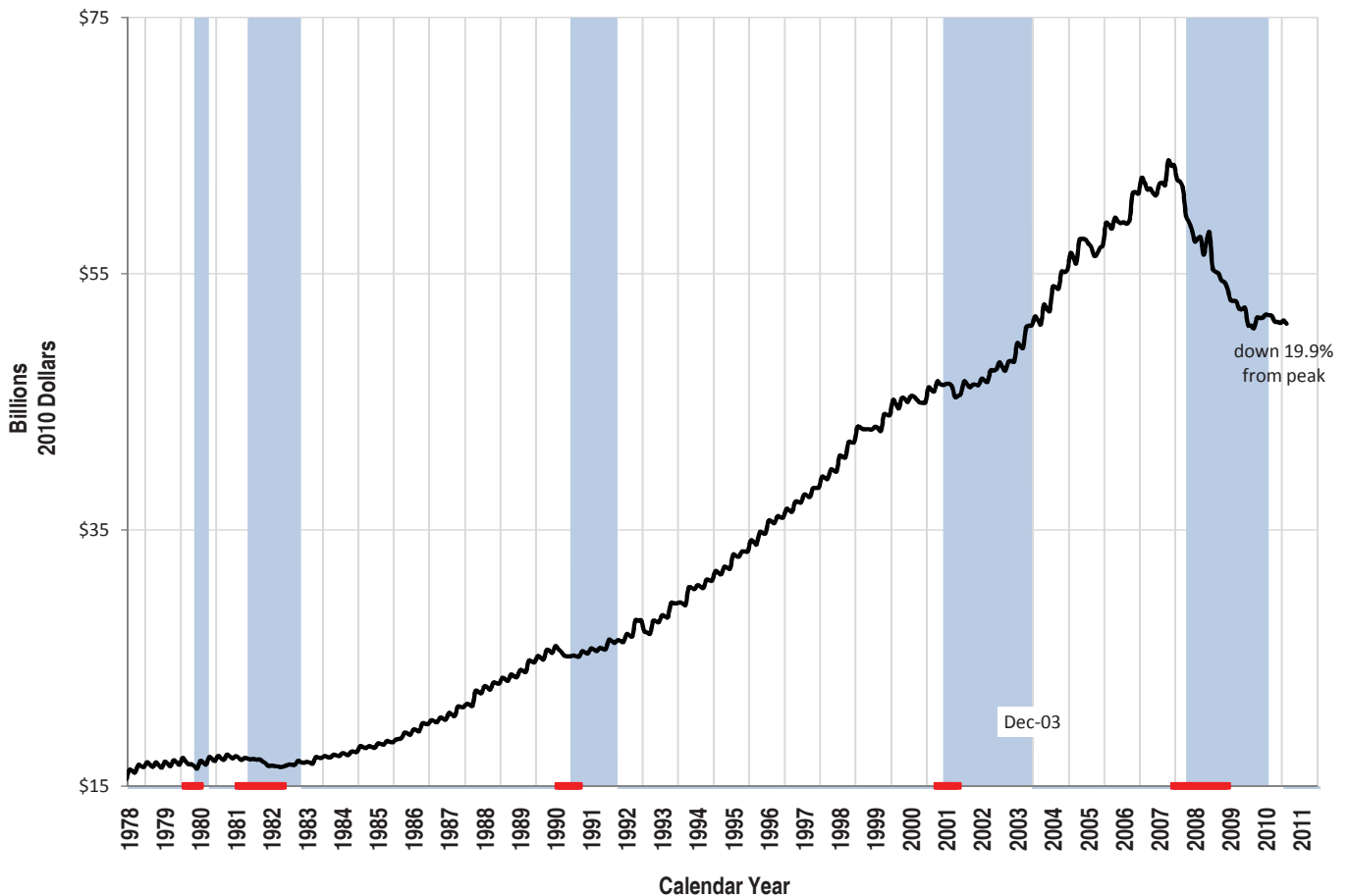
### Nevada Single Family Home Permits Issued Each Month



### Nevada Employment



### Total Nevada Inflation-Adjusted Wage & Salary Disbursements





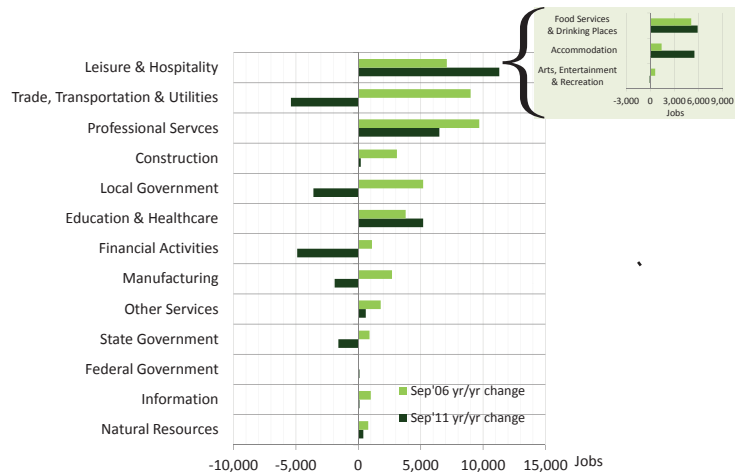
### Statewide Employment by Sector

	Leisure & Hospitality				Trade, Transportation & Utilities				Professional Services				Education & Healthcare			
	Yr/Yr Change		Share of Total		Yr/Yr Change		Share of Total		Yr/Yr Change		Share of Total		Yr/Yr Change		Share of Total	
	(thou.)	%	%	Rank	(thou.)	%	%	Rank	(thou.)	%	%	Rank	(thou.)	%	%	Rank
September 2010	3.0	1.0	27.8	1	(2.1)	(1.0)	18.8	2	1.1	0.8	12.1	3	2.2	2.3	8.9	4
October 2010	5.0	1.6	27.7	1	(3.2)	(1.5)	18.7	2	2.4	1.8	12.2	3	1.3	1.3	9.0	4
November 2010	4.6	1.5	27.5	1	(5.2)	(2.4)	18.9	2	1.1	0.8	12.3	3	2.0	2.0	9.1	4
December 2010	3.3	1.1	27.6	1	(4.7)	(2.2)	18.9	2	2.7	2.0	12.4	3	2.5	2.5	9.1	4
January 2011	4.3	1.4	27.9	1	(3.5)	(1.7)	18.7	2	2.3	1.7	12.5	3	3.5	3.6	9.3	4
February 2011	3.9	1.3	27.9	1	(3.0)	(1.5)	18.4	2	2.7	2.0	12.3	3	3.3	3.3	9.3	4
March 2011	7.3	2.4	28.1	1	(1.9)	(0.9)	18.4	2	5.5	4.1	12.5	3	5.2	5.2	9.4	4
April 2011	7.3	2.4	28.4	1	(2.2)	(1.1)	18.3	2	4.4	3.3	12.5	3	5.2	5.2	9.4	4
May 2011	7.8	2.5	28.5	1	(3.9)	(1.9)	18.2	2	3.7	2.7	12.4	3	5.1	5.1	9.4	4
June 2011	8.6	2.7	28.8	1	(5.9)	(2.8)	18.1	2	5.2	3.8	12.6	3	4.4	4.4	9.3	4
July 2011	8.7	2.8	28.9	1	(5.8)	(2.8)	18.3	2	4.1	3.0	12.5	3	4.7	4.7	9.4	4
August 2011	10.6	3.4	28.9	1	(5.6)	(2.7)	18.3	2	3.1	2.3	12.6	3	3.9	3.9	9.3	4
September 2011	11.3	3.6	28.6	1	(5.4)	(2.6)	18.2	2	6.5	4.8	12.6	3	5.2	5.2	9.3	4

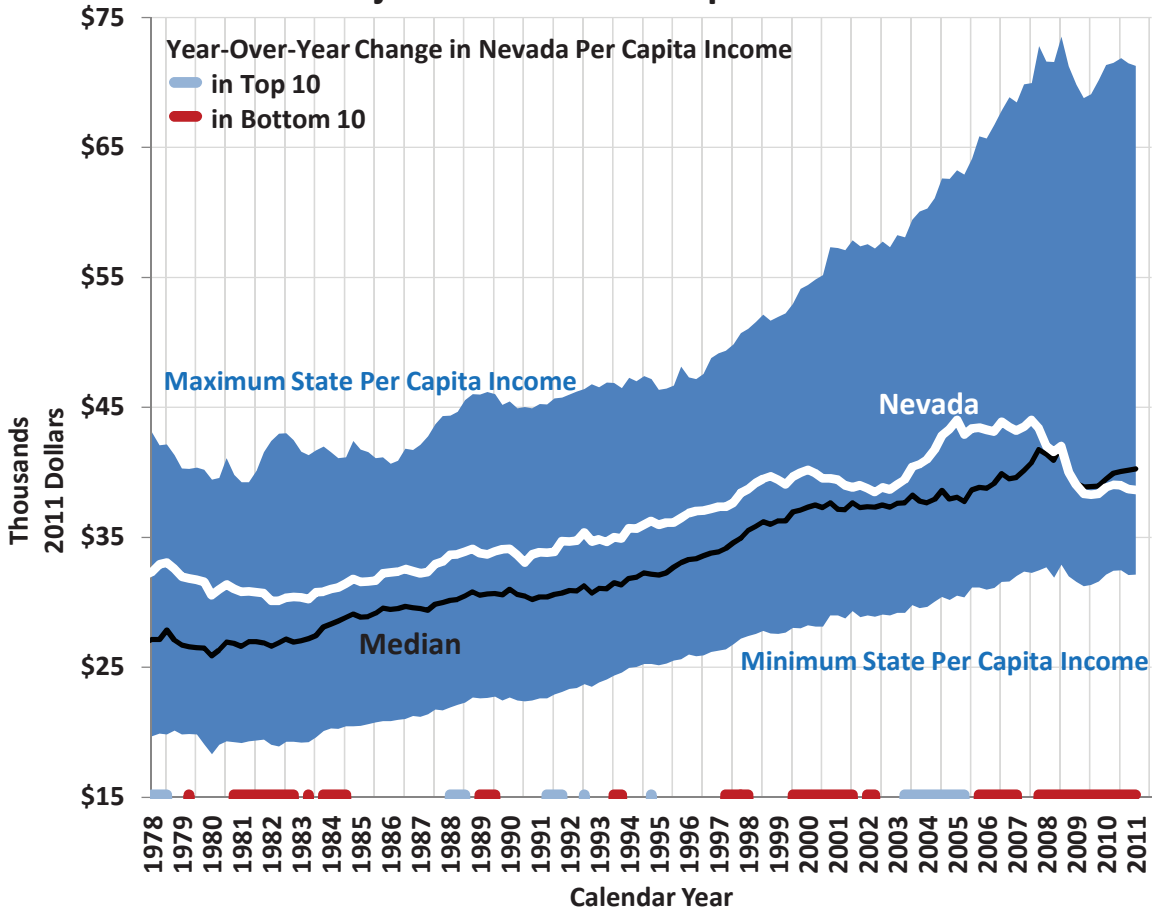
	Local Government				Construction				Financial Services				Manufacturing			
	Yr/Yr Change		Share of Total		Yr/Yr Change		Share of Total		Yr/Yr Change		Share of Total		Yr/Yr Change		Share of Total	
	(thou.)	%	%	Rank	(thou.)	%	%	Rank	(thou.)	%	%	Rank	(thou.)	%	%	Rank
September 2010	(3.9)	(3.8)	8.9	5	(17.6)	(22.9)	5.3	6	(2.4)	(4.4)	4.6	7	(1.3)	(3.3)	3.4	8
October 2010	(3.7)	(3.6)	8.9	5	(15.8)	(21.0)	5.3	6	(2.7)	(5.0)	4.6	7	(1.5)	(3.8)	3.4	9
November 2010	(2.8)	(2.7)	9.0	5	(14.0)	(19.5)	5.2	6	(2.6)	(4.8)	4.6	7	(1.9)	(4.9)	3.3	9
December 2010	(2.5)	(2.4)	8.9	5	(11.1)	(16.6)	5.0	6	(2.4)	(4.5)	4.6	7	(2.3)	(5.9)	3.2	9
January 2011	(2.1)	(2.1)	9.1	5	(6.5)	(11.0)	4.8	6	(2.2)	(4.2)	4.6	7	(1.9)	(5.0)	3.3	8
February 2011	(2.2)	(2.1)	9.1	5	(3.7)	(6.4)	4.9	6	(1.7)	(3.2)	4.6	7	(1.9)	(5.0)	3.2	9
March 2011	(2.6)	(2.5)	9.0	5	(2.8)	(4.9)	4.9	6	(2.6)	(5.0)	4.5	7	(2.0)	(5.3)	3.2	9
April 2011	(1.4)	(1.4)	8.9	5	(7.1)	(11.9)	4.7	6	(3.5)	(6.6)	4.4	7	(2.2)	(5.8)	3.2	9
May 2011	(0.5)	(0.5)	8.9	5	(5.8)	(9.6)	4.9	6	(4.2)	(8.0)	4.3	7	(2.1)	(5.5)	3.2	9
June 2011	(3.2)	(3.2)	8.6	5	(5.1)	(8.4)	5.0	6	(4.0)	(7.7)	4.3	7	(2.1)	(5.5)	3.2	8
July 2011	(3.1)	(3.3)	8.2	5	(4.0)	(6.6)	5.1	6	(4.3)	(8.2)	4.3	7	(2.0)	(5.2)	3.2	8
August 2011	(2.4)	(2.6)	8.2	5	(2.8)	(4.6)	5.2	6	(4.6)	(8.8)	4.3	7	(2.0)	(5.3)	3.2	8
September 2011	(3.6)	(3.6)	8.5	5	0.2	0.3	5.3	6	(4.9)	(9.5)	4.2	7	(1.9)	(5.0)	3.2	8

	Other Services				State Government				Federal Government				Information			
	Yr/Yr Change		Share of Total		Yr/Yr Change		Share of Total		Yr/Yr Change		Share of Total		Yr/Yr Change		Share of Total	
	(thou.)	%	%	Rank	(thou.)	%	%	Rank	(thou.)	%	%	Rank	(thou.)	%	%	Rank
September 2010	0.4	1.2	3.1	10	0.1	0.3	3.3	9	(0.2)	(1.1)	1.6	11	(0.5)	(3.9)	1.1	13
October 2010	1.0	3.0	3.1	10	(0.1)	(0.3)	3.4	8	(0.5)	(2.8)	1.5	11	(0.4)	(3.1)	1.1	13
November 2010	0.9	2.7	3.1	10	(0.3)	(0.8)	3.4	8	(0.4)	(2.3)	1.5	11	(0.3)	(2.3)	1.1	12
December 2010	0.6	1.8	3.0	10	(0.1)	(0.3)	3.4	8	(0.3)	(1.7)	1.5	11	(0.2)	(1.6)	1.1	12
January 2011	0.8	2.5	3.0	10	(0.1)	(0.3)	3.1	9	(0.4)	(2.3)	1.5	11	0.3	2.4	1.1	12
February 2011	0.9	2.8	3.0	10	(0.4)	(1.1)	3.4	8	(0.2)	(1.2)	1.5	11	0.0	0.0	1.1	12
March 2011	0.8	2.4	3.0	10	(0.5)	(1.3)	3.4	8	(0.6)	(3.4)	1.5	11	0.0	0.0	1.1	12
April 2011	0.4	1.2	3.1	10	(0.8)	(2.1)	3.4	8	(1.1)	(5.9)	1.6	11	(0.1)	(0.8)	1.1	12
May 2011	0.4	1.2	3.1	10	(0.5)	(1.3)	3.4	8	(5.6)	(24.2)	1.6	11	0.0	0.0	1.1	12
June 2011	0.7	2.0	3.1	9	(0.4)	(1.2)	3.1	10	(2.7)	(13.2)	1.6	11	0.2	1.6	1.1	13
July 2011	0.4	1.2	3.2	9	(1.1)	(3.2)	3.0	10	(2.4)	(11.9)	1.6	11	(0.1)	(0.8)	1.1	13
August 2011	0.6	1.7	3.2	9	(1.4)	(4.1)	3.0	10	(0.6)	(3.3)	1.6	11	0.1	0.8	1.1	13
September 2011	0.6	1.7	3.1	10	(1.6)	(4.3)	3.2	9	0.1	0.6	1.6	11	0.1	0.8	1.1	13

	Natural Resources				All Non-Farm Jobs		
	Yr/Yr Change		Share of Total		Total	Yr/Yr Change	
	(thou.)	%	%	Rank	(thou.)	(thou.)	%
September 2010	0.7	6.0	1.1	12	1,115.0	(20.5)	(1.8)
October 2010	0.8	6.8	1.1	12	1,118.0	(17.4)	(1.5)
November 2010	0.9	7.8	1.1	13	1,116.6	(18.0)	(1.6)
December 2010	0.8	6.9	1.1	13	1,120.4	(13.7)	(1.2)
January 2011	0.7	6.1	1.1	13	1,099.2	(4.8)	(0.4)
February 2011	0.7	6.1	1.1	13	1,103.9	(1.6)	(0.1)
March 2011	0.5	4.3	1.1	13	1,114.9	6.3	0.6
April 2011	0.7	6.0	1.1	13	1,119.1	(0.4)	(0.0)
May 2011	0.5	4.2	1.1	13	1,122.4	(5.1)	(0.5)
June 2011	0.4	3.2	1.1	12	1,119.4	(3.9)	(0.3)
July 2011	0.1	0.8	1.2	12	1,110.8	(4.8)	(0.4)
August 2011	0.1	0.8	1.2	12	1,112.0	(1.0)	(0.1)
September 2011	0.4	3.2	1.1	12	1,122.0	7.0	0.6



### Inflation-Adjusted State Per Capita Income



### Inflation-Adjusted State Per Capita Income

