

# The SILVER SAGE

AN OVERVIEW OF NEVADA'S ECONOMY BY THE SAGES AT THE DEPARTMENT OF ADMINISTRATION



Sometimes it's not enough to know what things mean,  
sometimes you have to know what things don't mean.

— Bob Dylan

		US Rate	Nevada Rate	Rank 1 = worst
Foreclosure Filings Rate	Dec '11	0.2%	0.6%	1
Home Price Index (FHFA)	2011q3 v 2010q3	-3.7%	-12.3%	1
	2011q3 v 2006q3	-18.6%	-58.1%	1
Wage & Salary Disbursements	2011q3 v 2010q3	2.9%	1.5%	9
Personal Income	2011q3 v 2010q3	4.1%	3.1%	6
Employment*	Dec '11 v Dec '10	1.3%	0.3%	9
Unemployment**	Dec '11	8.5%	12.6%	1

\*Not seasonally adjusted.  
\*\*Seasonally adjusted.

## State General Fund Revenues

Budgeted Amounts Based on May 2011 Economic Forum Forecast Adjusted for Legislature & Court Actions v Actual

General Fund Revenue Sources	FY 2012 Budget			FY 2012 Collections vs Budget			
	Total millions	Yr/Yr Change		Through	Year-to-Date		
		millions	%		Actual millions	Over (Under) Budget millions	%
Sales Tax	\$802.1	\$6.5	0.8	November	\$340.8	\$13.1	4.0
Gaming Percentage Fees Collections	665.4	13.2	2.0	January	353.9	(9.5)	(2.6)
Modified Business Tax <sup>1</sup>	355.0	(26.9)	(7.0)	September	90.7	4.7	5.5
Insurance Premium Tax	239.9	5.1	2.2	September	58.2	0.4	0.7
Live Entertainment Tax - Gaming	117.5	(1.0)	(0.9)	December	65.4	6.6	11.3
Cigarette Tax	83.8	(2.2)	(2.6)	November	35.8	0.3	0.8
Commercial Recordings	75.7	2.1	2.9	January	38.0	(4.4)	(10.5)
Real Property Transfer Tax <sup>4</sup>	50.4	(1.2)	(2.3)	December	25.9	(0.9)	(3.4)
Liquor Tax	39.4	(0.0)	(0.1)	November	17.4	0.7	4.3
Governmental Services Tax <sup>3</sup>	61.0	(0.6)	(1.0)	December	30.6	0.5	1.6
Business License Fee	59.9	5.4	10.0	December	29.5	1.6	5.8
State Share LSST & Various Local SUT	31.2	0.4	1.5	November	13.2	0.5	4.0
Live Entertainment Tax - NonGaming	10.9	(1.2)	(9.8)	November	5.1	0.5	10.5
Other General Fund Revenues	187.8	(175.2)	(48.3)	December	83.5	31.0	58.9
Year-End Transfers	100.7	(6.7)	(6.2)	n/a	n/a	n/a	n/a
<b>Totals</b>	<b>\$2,880.6</b>	<b>(\$294.8)</b>	<b>(9.3)</b>		<b>\$1,188.1</b>	<b>\$45.2</b>	<b>4.0</b>
Percentage Fees net of EFA	\$660.4	\$12.2	1.9	January	\$365.4	(\$8.3)	(2.2)
Lodging Tax <sup>2</sup>	\$111.3	(\$1.2)	(1.1)	November	\$52.3	\$6.0	13.1
Local School Support Tax	1,034.9	15.1	1.5	November	440.3	17.1	4.0
LSST (Out-of-State)	93.1	(6.5)	(6.5)	November	33.1	(5.3)	(13.9)
LSST (In-State)	941.7	21.6	2.3	November	407.2	22.4	5.8

## Historical Collections and Year-to-Date FY 2012 Collections Compared to Year-to-Date FY 2011

General Fund Revenue Sources	FY 2009 Actual			FY 2010 Actual			FY 2011 Actual			FY 2012 Actual Year-to-Date		
	Total millions	Yr/Yr Change		Total millions	Yr/Yr Change		Total millions	Yr/Yr Change		Total millions	Yr/Yr Change	
		millions	%		millions	%		millions	%		millions	%
Sales Tax	\$842.4	(\$123.7)	(12.8)	\$755.3	(\$87.0)	(10.3)	\$795.6	\$40.2	5.3	\$340.8	\$22.8	7.2
Gaming Percentage Fees Collections	655.2	(115.8)	(15.0)	630.5	(24.7)	(3.8)	652.2	21.7	3.4	353.9	3.0	0.8
Modified Business Tax <sup>1</sup>	277.5	(7.1)	(2.5)	385.1	107.6	38.8	381.9	(3.2)	(0.8)	90.7	(4.9)	(5.2)
Insurance Premium Tax	238.5	(18.2)	(7.1)	233.9	(4.6)	(1.9)	234.8	0.9	0.4	58.2	1.5	2.7
Live Entertainment Tax - Gaming	112.4	(9.2)	(7.6)	108.2	(4.2)	(3.7)	118.5	10.3	9.5	65.4	9.5	17.0
Cigarette Tax	97.0	(13.4)	(12.2)	88.6	(8.4)	(8.7)	86.0	(2.6)	(2.9)	35.8	(0.8)	(2.3)
Commercial Recordings	70.9	(6.2)	(8.0)	68.7	(2.2)	(3.1)	73.6	4.9	7.1	38.0	(4.1)	(9.7)
Real Property Transfer Tax <sup>4</sup>	65.9	(20.0)	(23.2)	53.3	(12.6)	(19.1)	51.6	(1.8)	(3.3)	25.9	0.6	2.2
Liquor Tax	37.0	(2.5)	(6.2)	38.4	1.4	3.9	39.5	1.1	2.8	17.4	0.6	3.3
Governmental Services Tax <sup>3</sup>	n/a	n/a	n/a	51.3	n/a	n/a	61.5	10.2	19.9	30.6	0.2	0.7
Business License Fee	22.5	3.0	15.1	41.9	19.4	86.3	54.5	12.5	29.9	29.5	4.2	16.4
State Share LSST & Various Local SUT	17.2	(2.5)	(12.6)	29.0	11.8	69.1	30.7	1.7	5.9	13.2	0.9	7.3
Live Entertainment Tax - NonGaming	9.2	(1.0)	(10.0)	11.5	2.3	25.2	12.1	0.6	5.4	5.1	(0.8)	(13.0)
Other General Fund Revenues	243.6	0.7	0.3	315.1	71.5	29.3	363.0	47.9	15.2	83.5	(18.1)	(17.8)
Year-End Transfers	50.1	0.9	1.9	98.4	48.3	96.4	107.4	9.0	9.2	n/a	n/a	n/a
<b>Totals</b>	<b>\$2,739.3</b>	<b>(\$314.9)</b>	<b>(10.3)</b>	<b>\$3,007.0</b>	<b>\$267.7</b>	<b>9.8</b>	<b>\$3,175.4</b>	<b>\$168.4</b>	<b>5.6</b>	<b>\$1,188.1</b>	<b>\$14.6</b>	<b>1.2</b>
Percentage Fees net of EFA	\$688.4	(\$104.3)	(13.2)	\$640.8	(\$47.6)	(6.9)	\$648.2	\$7.3	1.1	\$365.4	\$2.5	0.7
Lodging Tax <sup>2</sup>	n/a	n/a	n/a	\$97.7	n/a	n/a	\$112.6	\$14.9	15.3	\$52.3	\$9.0	20.8
Local School Support Tax	910.8	(136.5)	(13.0)	958.8	47.9	5.3	1,019.8	61.0	6.4	440.3	32.9	8.1
LSST (Out-of-State)	93.6	(8.7)	(8.5)	86.2	(7.4)	(7.9)	99.6	13.4	15.6	33.1	(3.4)	(9.4)
LSST (In-State)	817.3	(127.8)	(13.5)	872.6	55.3	6.8	920.2	47.6	5.5	407.2	36.3	9.8

<sup>1</sup> FY 2012 Modified Business Tax revenues are forecast to be lower than FY 2011 because A.B. 561 exempts the first \$62,500 of quarterly taxable payroll, thereby reducing collections by approximately \$25.2 million.

<sup>2</sup> Beginning in FY 2012, revenues from the lodging tax are being deposited in the Distributive School Account.

<sup>3</sup> Governmental Services Tax commissions and penalties are posted in "Other General Fund Revenues."

<sup>4</sup> Current quarter based on preliminary amounts reported by the Controller

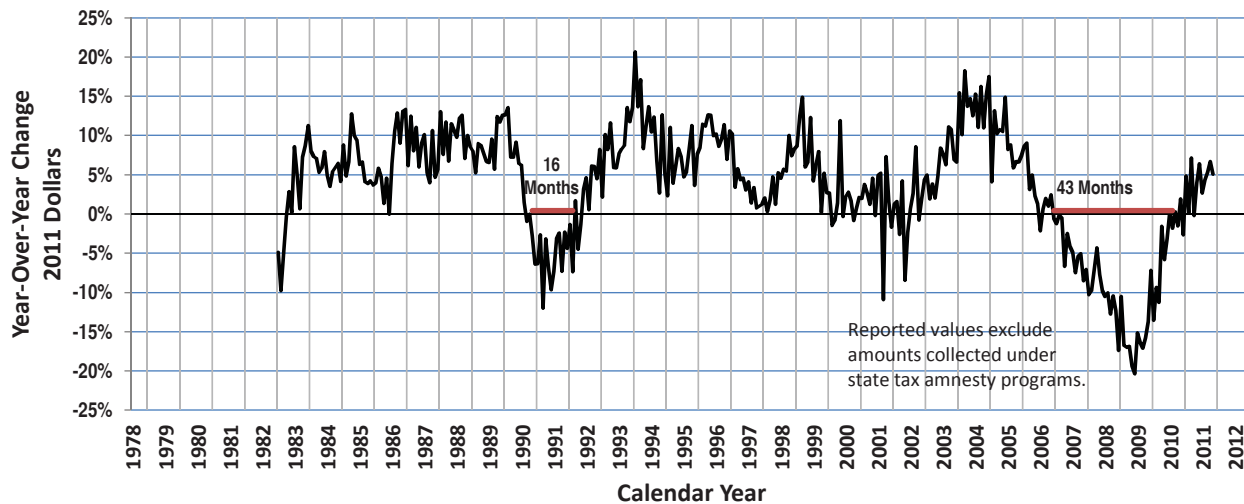
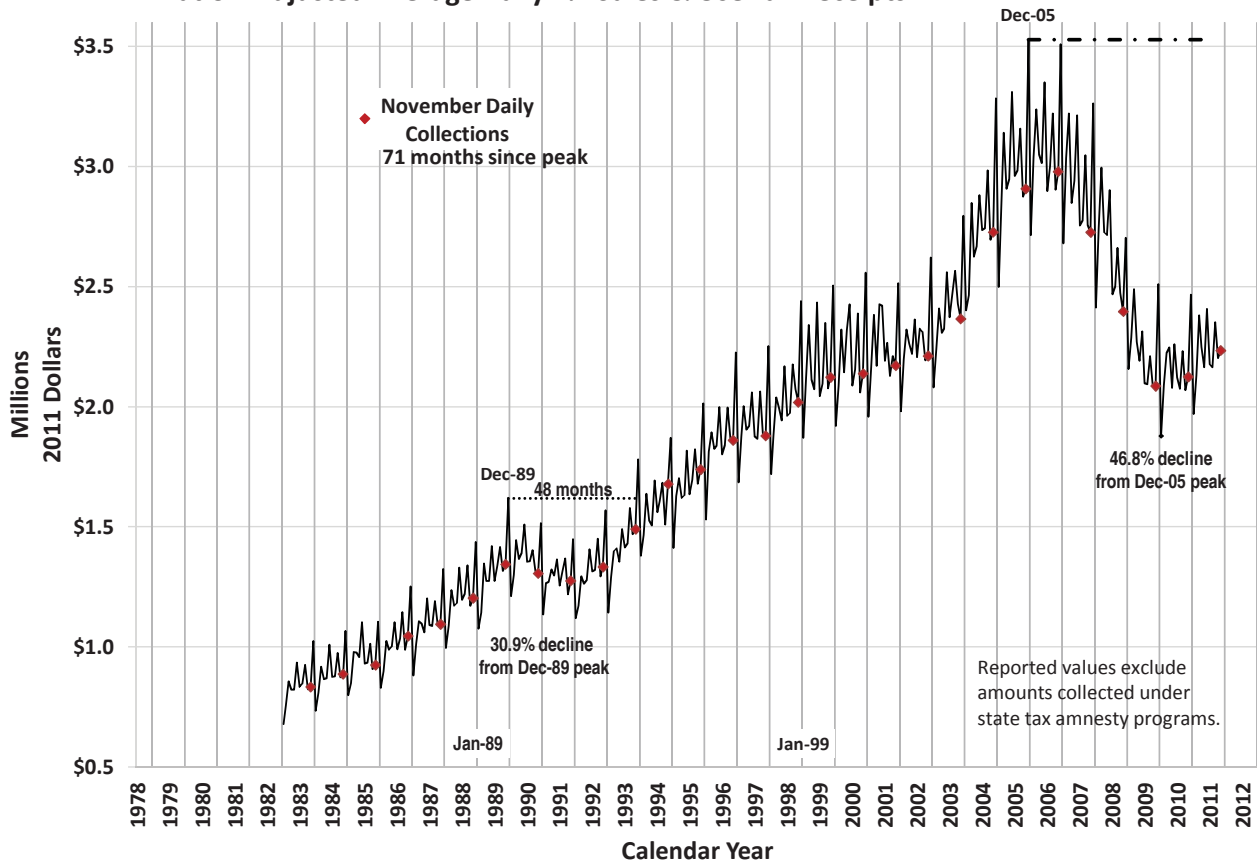
### Statewide Taxable Sales & Use by Industry

	Year/Year Change	
	Total (millions)	%
November 2010	\$3,097.6	\$80.8 2.7
December 2010	4,063.5	407.9 11.2
January 2011	3,008.8	186.2 6.6
February 2011	2,923.8	120.0 4.3
March 2011	3,648.5	319.3 9.6
April 2011	3,357.1	74.2 2.3
May 2011	3,360.8	226.9 7.2
June 2011	3,629.0	298.2 9.0
July 2011	3,391.6	152.1 4.7
August 2011	3,409.5	184.1 5.7
September 2011	3,582.9	338.9 10.4
October 2011	3,516.5	379.4 12.1
November 2011	3,393.7	296.2 9.6



### Inflation-Adjusted Average Daily 2% Sales & Use Tax Receipts

Millions



## Statewide Taxable Sales & Use by Industry

	Food Services & Drinking Places (722)				Miscellaneous Retail & Non-Retail Stores (442, 443, 447, 451, 453, 454)				Information, Financial, Insurance, Real Estate, Renting & Leasing* (511-533)				Motor Vehicle & Parts Dealers (441)			
	Year/Year Change		Share of Total		Year/Year Change		Share of Total		Year/Year Change		Share of Total		Year/Year Change		Share of Total	
	(millions)	%	%	Rank	(millions)	%	%	Rank	(millions)	%	%	Rank	(millions)	%	%	Rank
November 2010	\$45.3	7.3	21.6	1	(\$2.0)	(0.5)	12.2	2	(\$22.8)	(7.2)	9.4	5	\$53.0	21.8	9.5	4
December 2010	91.9	15.9	16.5	1	14.5	2.9	12.8	2	4.1	1.1	9.2	4	44.6	17.2	7.5	7
January 2011	69.1	10.3	24.6	1	18.9	5.6	11.9	2	25.8	8.7	10.7	3	33.3	12.6	9.9	4
February 2011	19.0	2.9	23.4	1	12.9	3.8	12.1	2	(23.8)	(7.9)	9.5	5	43.9	17.3	10.2	3
March 2011	92.0	12.2	23.2	1	49.6	12.8	12.0	2	25.1	7.1	10.4	3	48.3	15.2	10.0	4
April 2011	43.4	5.7	23.9	1	33.3	9.4	11.5	2	51.2	16.7	10.6	3	38.2	12.8	10.0	4
May 2011	42.5	5.5	24.2	1	27.2	7.7	11.3	2	20.9	7.0	9.5	4	37.0	12.1	10.2	3
June 2011	105.9	14.5	23.0	1	29.8	7.6	11.6	2	(10.6)	(2.7)	10.3	3	44.6	15.0	9.4	4
July 2011	73.8	10.0	24.0	1	19.4	5.2	11.6	2	(39.7)	(11.2)	9.3	4	17.6	5.4	10.1	3
August 2011	42.2	5.7	23.1	1	25.7	7.1	11.4	2	(46.6)	(12.6)	9.5	4	36.0	11.4	10.3	3
September 2011	105.3	14.5	23.2	1	28.6	7.5	11.4	2	42.8	12.8	10.6	3	29.5	9.4	9.6	4
October 2011	89.3	11.7	24.2	1	9.8	2.8	10.4	2	21.8	7.0	9.5	3	37.6	12.9	9.4	4
November 2011	50.1	7.5	21.2	1	21.7	5.8	11.7	2	12.6	4.3	9.0	6	27.1	9.1	9.5	5

	General Merchandise Stores (452)				Clothing & Clothing Accessories Stores (448)				Wholesale Trade (423-425)				Manufacturing (311-339)			
	Year/Year Change		Share of Total		Year/Year Change		Share of Total		Year/Year Change		Share of Total		Year/Year Change		Share of Total	
	(millions)	%	%	Rank	(millions)	%	%	Rank	(millions)	%	%	Rank	(millions)	%	%	Rank
November 2010	\$9.9	2.9	11.5	3	\$35.1	14.0	9.2	6	\$19.6	9.1	7.6	7	\$10.2	6.7	5.2	8
December 2010	(0.9)	(0.2)	12.2	3	23.6	6.8	9.1	6	6.9	2.6	6.6	8	(6.1)	(2.9)	5.0	9
January 2011	(11.1)	(4.1)	8.6	5	24.7	12.3	7.5	7	22.5	11.0	7.5	6	10.7	7.4	5.2	8
February 2011	(5.7)	(2.0)	9.6	4	24.8	11.4	8.3	6	9.4	4.5	7.4	7	41.3	37.2	5.2	8
March 2011	(5.8)	(1.7)	9.4	5	24.2	9.4	7.7	7	52.4	21.1	8.2	6	14.0	8.2	5.0	8
April 2011	4.9	1.7	8.6	5	55.0	23.9	8.5	6	13.0	5.5	7.4	7	(119.4)	(43.4)	4.6	8
May 2011	(15.7)	(5.1)	8.7	5	33.0	13.6	8.2	6	30.6	13.5	7.6	7	16.0	11.4	4.7	8
June 2011	1.9	0.6	8.7	5	39.7	15.6	8.1	7	36.1	14.0	8.1	6	49.8	31.4	5.7	8
July 2011	(1.3)	(0.4)	8.4	5	40.3	17.1	8.2	6	26.2	10.8	7.9	7	(3.4)	(2.0)	5.0	8
August 2011	(1.9)	(0.6)	8.7	5	28.8	11.5	8.2	7	36.7	15.2	8.2	6	1.1	0.6	5.2	8
September 2011	2.3	0.8	8.2	7	48.6	18.2	8.8	5	41.4	15.7	8.5	6	33.4	20.6	5.5	8
October 2011	8.5	2.8	8.7	5	31.5	12.2	8.2	7	35.2	13.7	8.3	6	21.9	13.6	5.2	8
November 2011	13.1	3.7	10.9	3	42.3	14.8	9.6	4	45.8	19.5	8.3	7	38.4	23.7	5.9	8

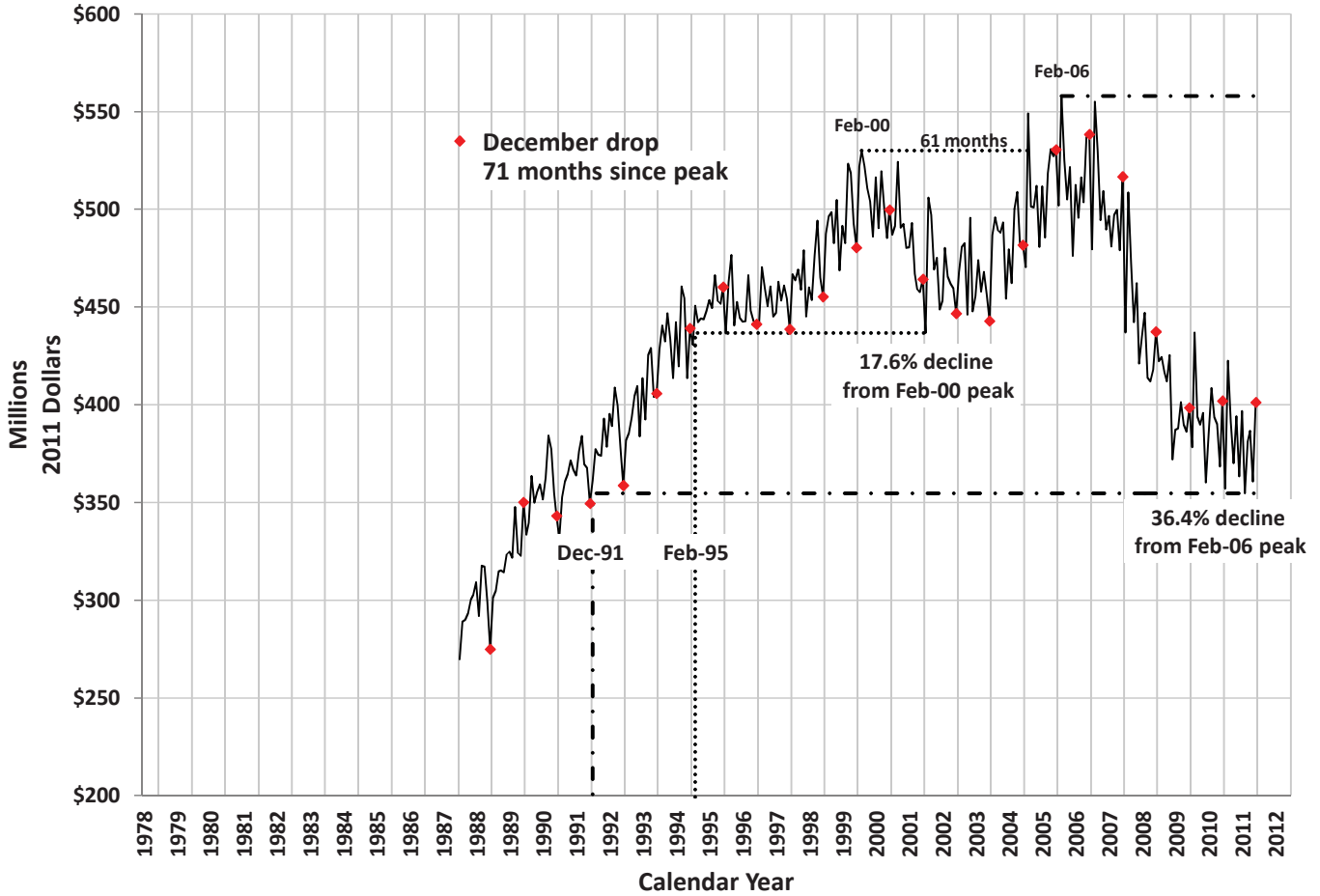
	Food & Beverage Stores (445)				Building Material & Garden Equipment & Supplies (444)				Natural Resources & Utilities (111-221)				Health & Personal Care Stores (446)			
	Year/Year Change		Share of Total		Year/Year Change		Share of Total		Year/Year Change		Share of Total		Year/Year Change		Share of Total	
	(millions)	%	%	Rank	(millions)	%	%	Rank	(millions)	%	%	Rank	(millions)	%	%	Rank
November 2010	\$3.5	2.9	4.0	9	\$0.2	0.2	3.6	10	(\$8.0)	(15.9)	1.4	13	(\$25.0)	(30.0)	1.9	12
December 2010	(5.8)	(3.5)	3.9	10	(1.1)	(1.1)	2.6	12	254.3	217.7	9.1	5	(5.5)	(4.3)	3.0	11
January 2011	(1.5)	(1.3)	3.6	9	(0.0)	(0.0)	3.4	10	2.6	6.2	1.5	13	5.9	7.5	2.8	11
February 2011	2.3	2.1	3.9	9	(5.3)	(5.3)	3.2	10	7.7	17.5	1.8	13	2.4	3.0	2.8	11
March 2011	(2.0)	(1.6)	3.3	10	(4.8)	(3.7)	3.4	9	22.5	53.4	1.8	13	3.9	4.1	2.7	11
April 2011	1.8	1.5	3.6	10	0.6	0.4	4.3	9	(29.4)	(38.2)	1.4	13	4.2	4.8	2.7	11
May 2011	(2.5)	(2.0)	3.7	10	(1.1)	(0.8)	4.0	9	14.3	36.6	1.6	13	4.6	5.1	2.8	11
June 2011	(0.4)	(0.3)	3.5	10	2.8	1.9	4.1	9	12.9	23.7	1.9	13	4.9	5.1	2.8	11
July 2011	0.7	0.6	3.6	10	(1.8)	(1.3)	4.1	9	16.5	27.2	2.3	13	5.2	6.6	2.5	12
August 2011	4.9	4.1	3.7	9	2.1	1.7	3.6	10	51.5	102.1	3.0	11	7.1	9.9	2.3	13
September 2011	0.7	0.6	3.4	9	(18.3)	(15.2)	2.9	11	32.0	44.3	2.9	10	6.5	8.9	2.2	12
October 2011	3.8	3.3	3.4	11	8.6	7.0	3.8	9	73.8	156.0	3.4	10	6.0	10.2	1.8	13
November 2011	1.6	1.3	3.7	9	7.6	6.9	3.5	10	37.9	89.0	2.4	11	6.8	11.7	1.9	12

	Construction (236-238)				Transportation & Warehousing (481-493)				Arts, Entertainment, Recreation & Accommodation (711-721)				Other Services**, Public Administration & Miscellaneous (541-624, 811-999)			
	Year/Year Change		Share of Total		Year/Year Change		Share of Total		Year/Year Change		Share of Total		Year/Year Change		Share of Total	
	(millions)	%	%	Rank	(millions)	%	%	Rank	(millions)	%	%	Rank	(millions)	%	%	Rank
November 2010	(\$32.6)	(32.5)	2.2	11	\$0.8	7.1	0.4	14	(\$6.2)	(46.9)	0.2	15	(\$0.1)	(32.5)	0.0	16
December 2010	(9.2)	(11.0)	1.8	13	1.1	9.0	0.3	14	(4.0)	(29.0)	0.2	15	(0.3)	(25.5)	0.0	16
January 2011	(10.6)	(14.3)	2.1	12	0.7	6.4	0.4	14	(4.1)	(31.1)	0.3	15	(0.5)	(63.1)	0.0	16
February 2011	(6.7)	(11.3)	1.8	12	4.6	39.1	0.6	14	(6.6)	(46.0)	0.3	15	(0.2)	(43.1)	0.0	16
March 2011	4.2	5.9	2.1	12	(4.7)	(25.9)	0.4	14	0.5	4.6	0.3	15	(0.2)	(22.2)	0.0	16
April 2011	(27.2)	(31.9)	1.7	12	7.2	55.5	0.6	14	(2.5)	(20.3)	0.3	15	0.0	8.0	0.0	16
May 2011	20.8	34.8	2.4	12	5.6	38.3	0.6	14	(3.7)	(20.9)	0.4	15	(2.5)	(68.2)	0.0	16
June 2011	(15.5)	(17.0)	2.1	12	(2.9)	(16.5)	0.4	14	(0.6)	(9.8)	0.2	15	(0.1)	(19.0)	0.0	16
July 2011	2.9	3.5	2.5	11	(2.7)	(16.5)	0.4	14	(1.4)	(19.8)	0.2	15	(0.3)	(49.4)	0.0	16
August 2011	(4.2)	(5.0)	2.3	12	1.4	11.7	0.4	14	(0.6)	(8.0)	0.2	15	(0.1)	(22.7)	0.0	16
September 2011	(16.1)	(17.8)	2.1	13	0.8	5.3	0.4	14	1.7	21.6	0.3	15	(0.3)	(42.1)	0.0	16
October 2011	32.4	44.5	3.0	12	(0.2)	(1.9)	0.4	14	(0.7)	(8.0)	0.2	15	0.0	11.1	0.0	16
November 2011	(10.8)	(15.9)	1.7	13	1.0	8.1	0.4	14	0.9	12.3	0.2	15	0.0	8.4	0.0	16

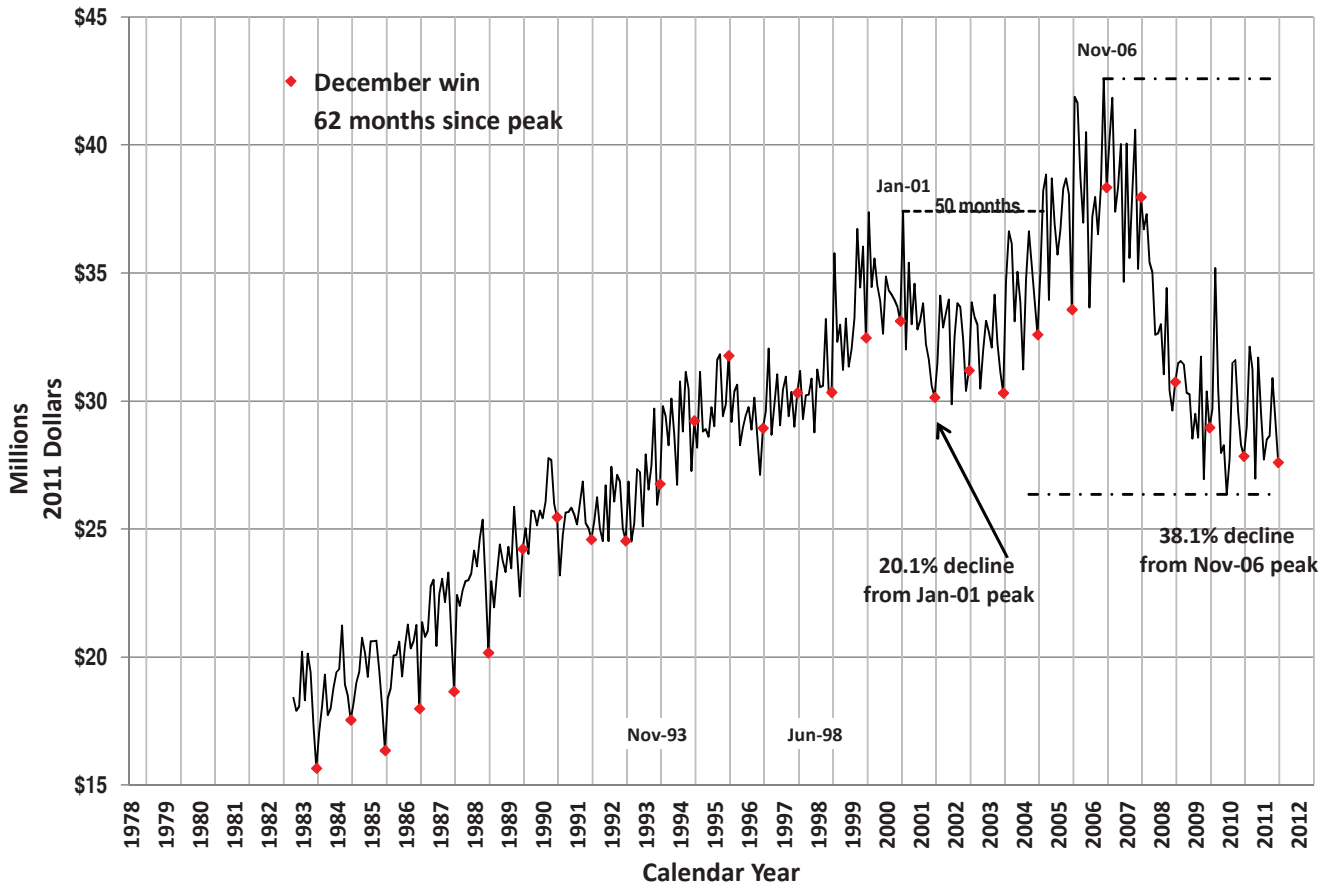
\* Statistically significant outliers in most recent month's data

\*\* Other Services includes Professional, Management, Administration, Education and Health Services.

### Inflation-Adjusted Statewide Average Daily Gaming Drop



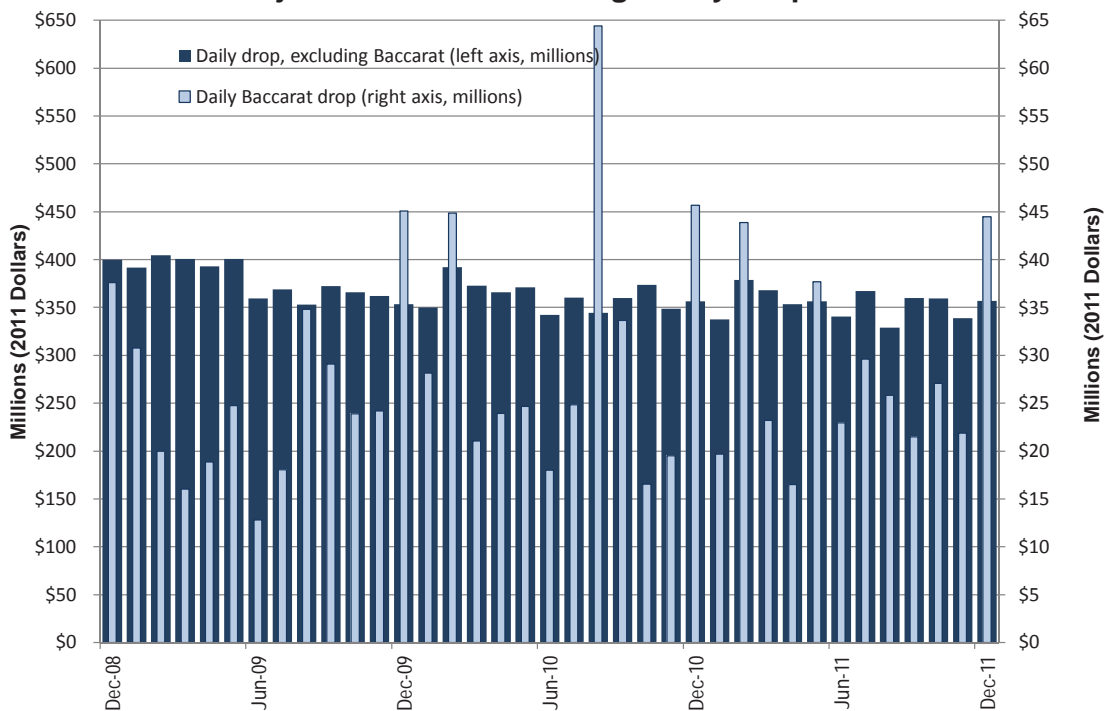
### Inflation-Adjusted Statewide Average Daily Gaming Win



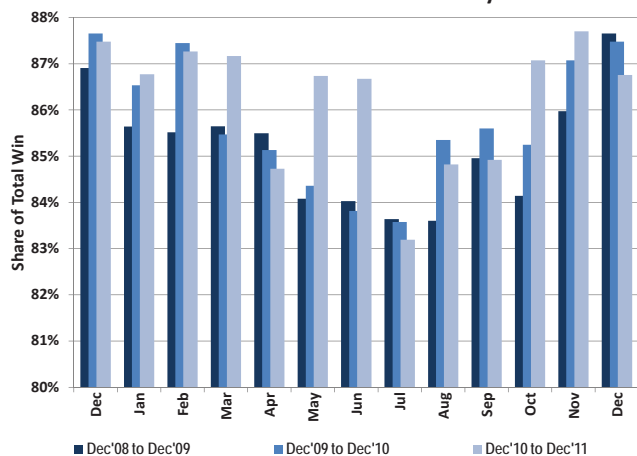
### Recent Statewide Gaming Statistics

Inflation-Adjusted Statewide Average Daily Gaming Activity											
Date	Slots		Games Excluding Baccarat		Baccarat		Tables	Total	Taxable	Pct. Fee due	
	Coin-In	Win	Amt. Played	Win	Amt. Played	Win	Win	Win	Win	after EFA	
	Yr/Yr Pct. Chg.	Yr/Yr Pct. Chg.	Yr/Yr Pct. Chg.	Yr/Yr Pct. Chg.	Yr/Yr Pct. Chg.	Yr/Yr Pct. Chg.	Yr/Yr Pct. Chg.	Yr/Yr Pct. Chg.	Yr/Yr Pct. Chg.	Yr/Yr Pct. Chg.	Yr/Yr Pct. Chg.
Dec-09	(12.1)	(13.6)	(8.6)	(21.4)	19.8	97.3	(11.5)	(5.8)	(17.0)	(3.6)	
Jan-10	(12.1)	(7.1)	(2.2)	(8.2)	(8.5)	9.5	(11.3)	(5.7)	3.4	14.3	
Feb-10	(4.4)	(8.9)	5.3	1.1	124.8	250.9	(7.4)	11.5	(13.4)	(30.1)	
Mar-10	(8.4)	(4.9)	2.2	(5.3)	31.4	55.0	(11.9)	(2.9)	(0.3)	5.8	
Apr-10	(8.5)	(10.4)	3.5	(3.9)	27.1	9.2	(11.4)	(7.7)	(11.4)	(25.4)	
May-10	(9.3)	(1.6)	4.1	(6.2)	(0.3)	(36.7)	(10.5)	(6.6)	0.7	17.1	
Jun-10	(6.8)	(3.7)	9.1	(5.8)	40.7	(61.6)	(6.7)	(7.6)	(1.8)	(5.6)	
Jul-10	(4.7)	(10.2)	12.1	0.5	37.4	7.8	(5.2)	(6.1)	(12.1)	(14.0)	
Aug-10	(4.1)	4.9	7.9	6.8	85.0	45.0	(10.4)	10.2	10.3	20.4	
Sep-10	(4.2)	(3.5)	2.0	(4.7)	15.6	28.2	(8.0)	(0.4)	1.7	5.3	
Oct-10	(0.8)	1.4	19.2	24.7	(30.8)	38.1	(6.0)	9.7	2.8	19.8	
Nov-10	(4.4)	1.6	0.3	(19.3)	(19.5)	(27.7)	(8.5)	(6.9)	(1.9)	(12.9)	
Dec-10	(0.5)	(8.3)	8.1	7.0	1.3	(1.9)	(6.4)	(3.9)	(5.0)	(23.1)	
Jan-11	(3.7)	3.9	(3.1)	1.6	(30.1)	(40.7)	(9.4)	(2.3)	7.3	17.8	
Feb-11	(5.2)	(2.5)	6.3	(0.3)	(2.3)	(33.0)	(9.2)	(8.8)	(11.3)	(15.4)	
Mar-11	(3.1)	(3.9)	8.7	9.2	10.1	50.9	(8.3)	2.4	(4.9)	(3.3)	
Apr-11	(2.6)	(5.1)	(7.6)	1.1	(31.1)	(5.2)	(7.7)	(3.6)	5.9	2.7	
May-11	(3.9)	2.3	(4.2)	7.2	52.7	122.0	(8.4)	12.2	(0.3)	9.2	
Jun-11	(1.6)	(2.5)	5.5	11.6	27.3	458.6	(0.6)	12.0	3.1	18.3	
Jul-11	1.5	(0.0)	3.3	(5.5)	19.3	16.3	2.0	0.0	(4.1)	(13.1)	
Aug-11	(4.8)	(2.8)	(2.4)	(2.8)	(59.9)	(42.1)	(6.0)	(9.5)	(10.1)	(19.6)	
Sep-11	(2.0)	(6.4)	10.2	(0.0)	(36.2)	(38.5)	(4.0)	(9.4)	(6.1)	(14.6)	
Oct-11	(3.5)	0.7	(4.7)	(10.6)	63.7	67.4	(9.9)	4.4	1.1	5.2	
Nov-11	(2.9)	(0.9)	(2.6)	9.6	12.1	25.5	(4.6)	3.5	(0.3)	11.4	
Dec-11	0.0	(1.5)	0.8	5.8	(2.6)	(7.3)	(2.2)	(0.9)	(4.1)	4.8	

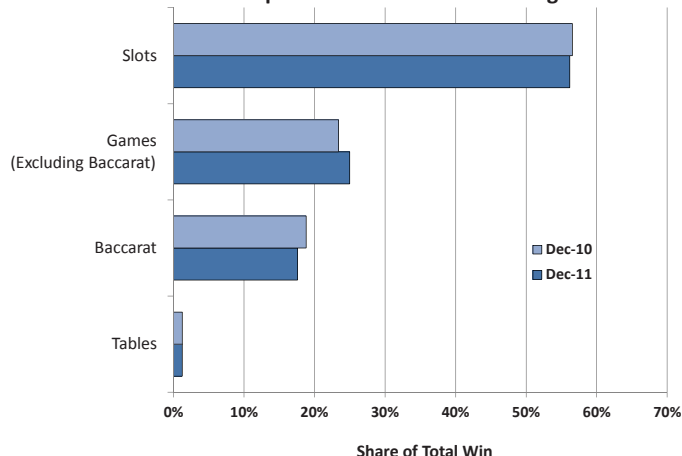
### Inflation-Adjusted Statewide Average Daily Drop



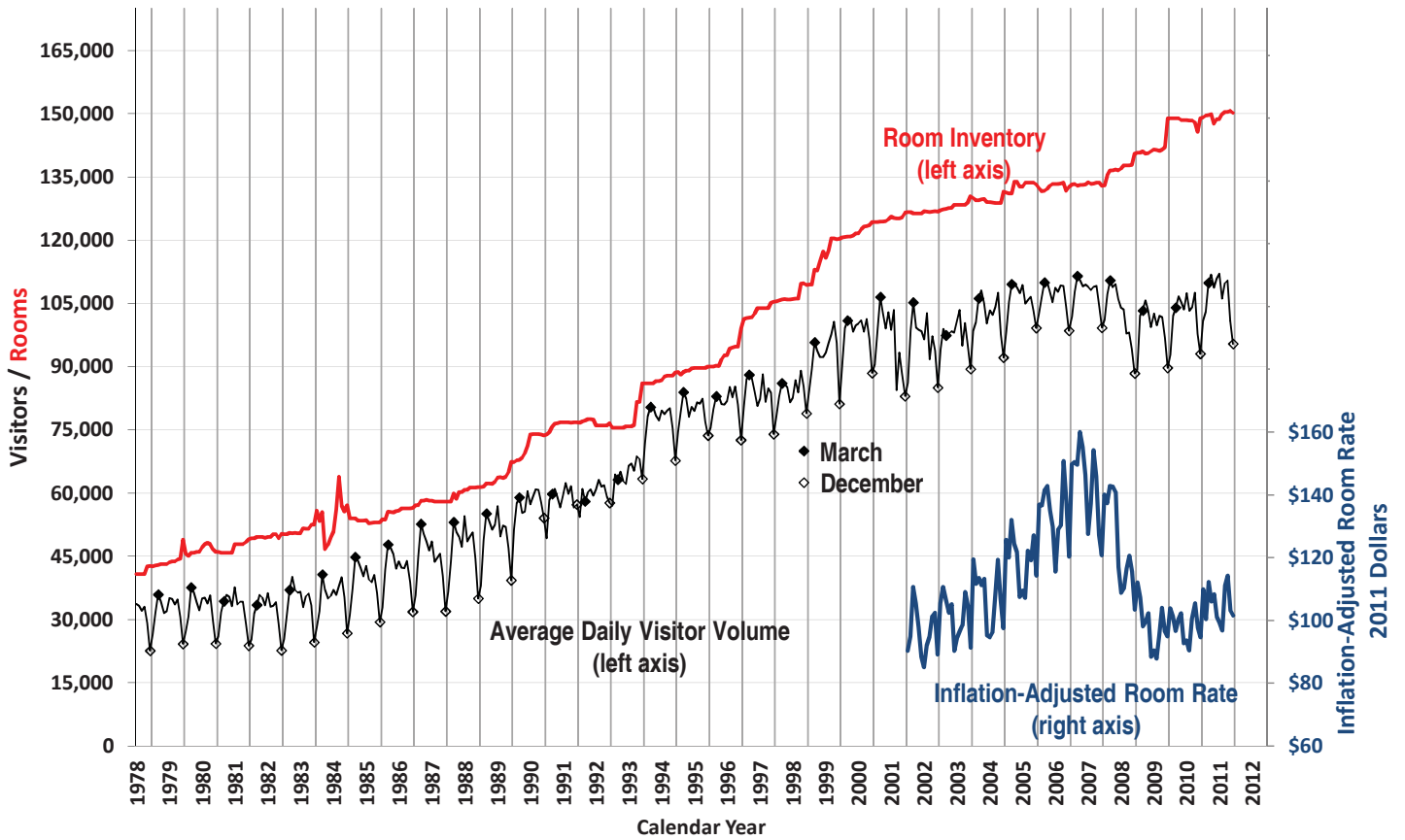
### Share of Statewide Win from Clark County



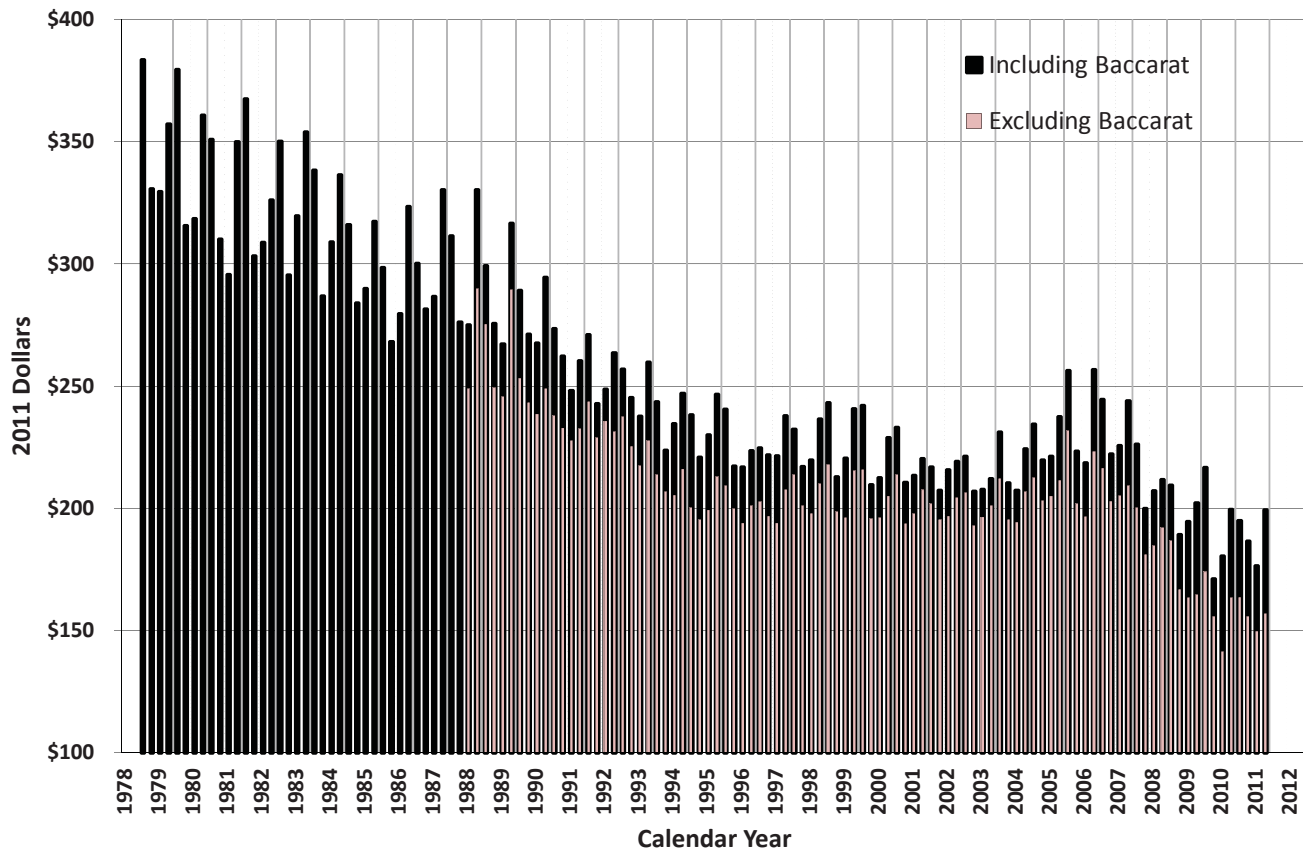
### Components of Statewide Gaming Win



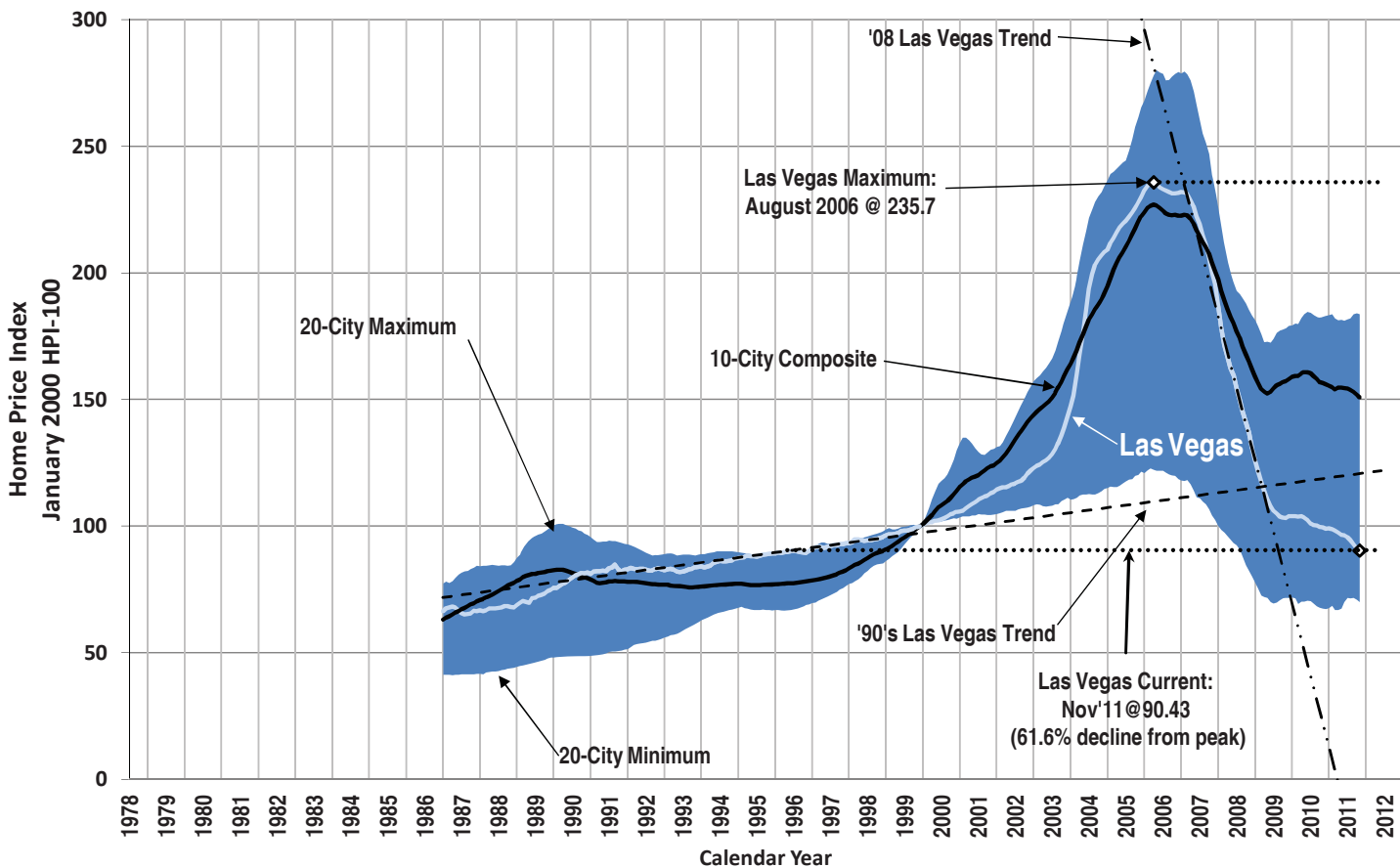
### Las Vegas Visitors vs. Rooms



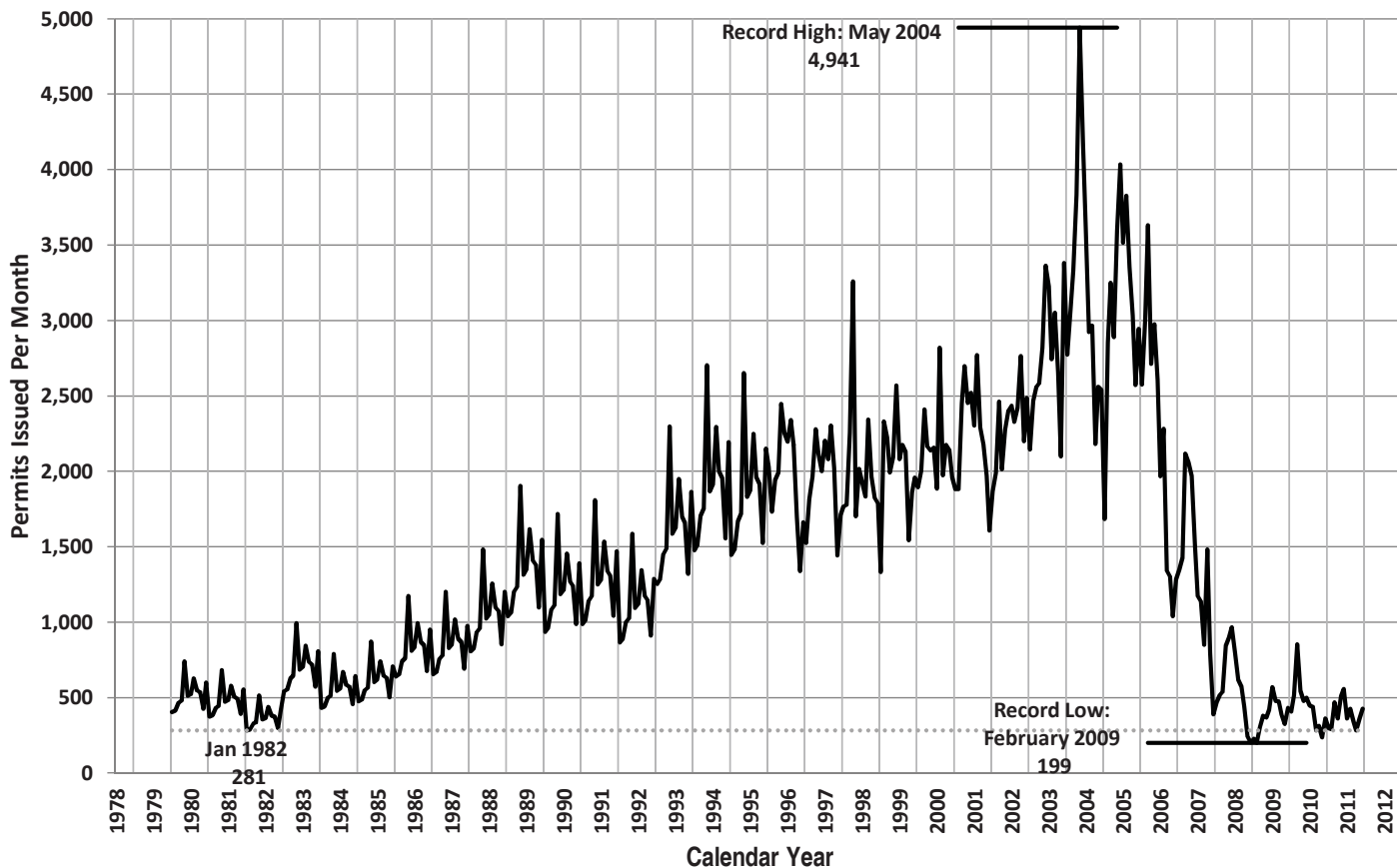
### Inflation-Adjusted Average Las Vegas Gaming Win per Visitor



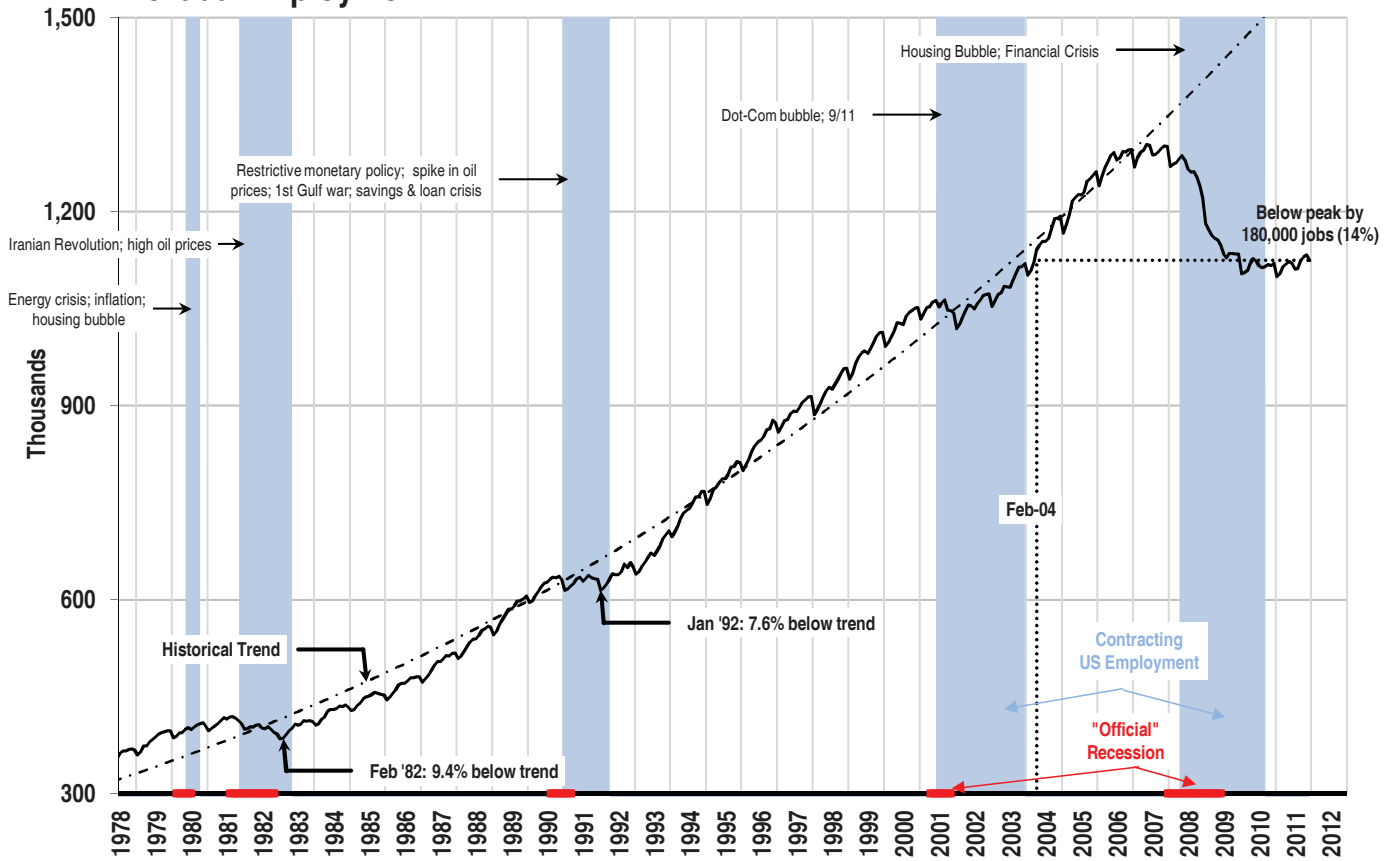
### Case-Shiller Seasonally Adjusted Home Price Index



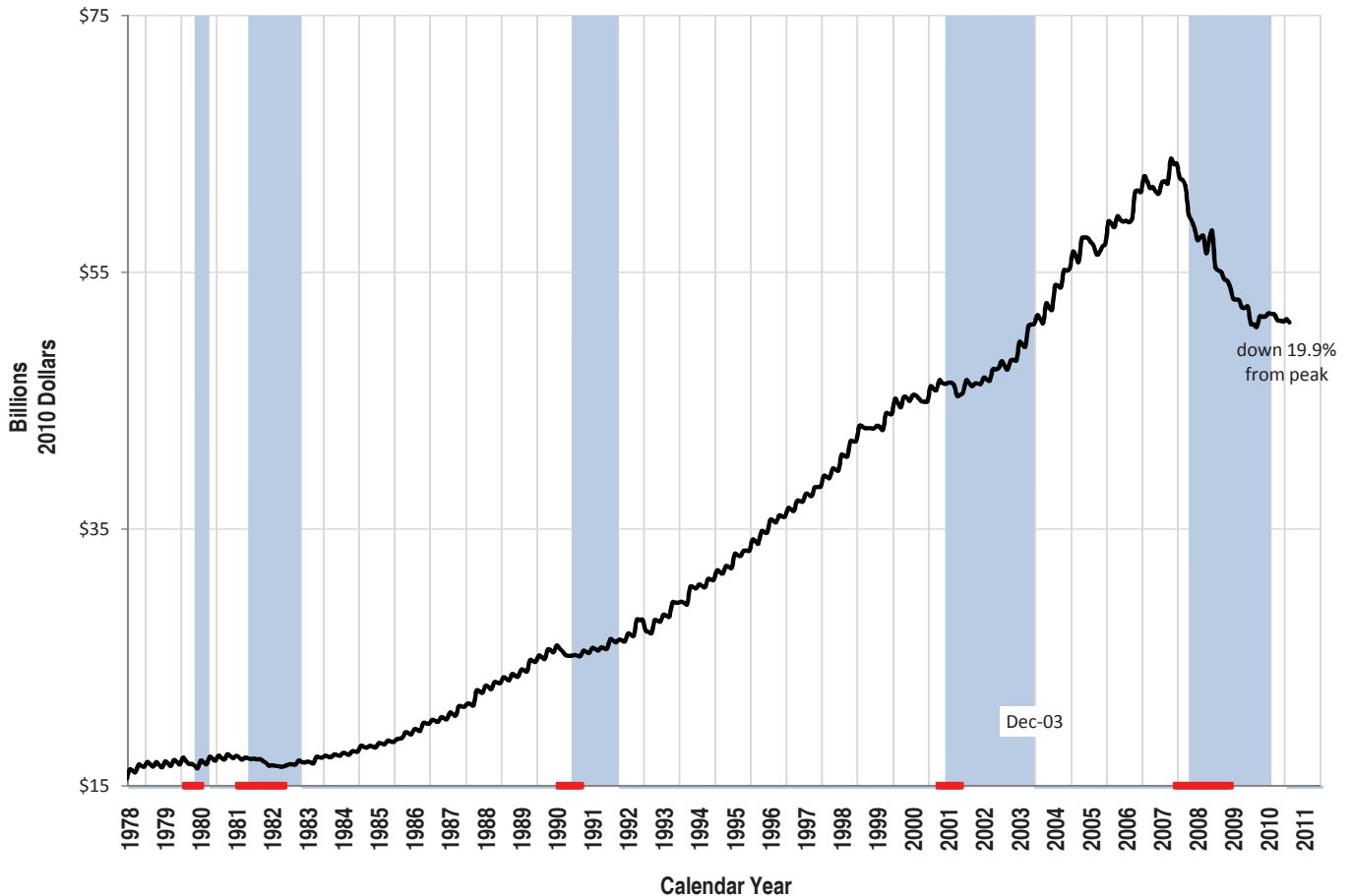
### Nevada Single Family Home Permits Issued Each Month



### Nevada Employment



### Total Nevada Inflation-Adjusted Wage & Salary Disbursements





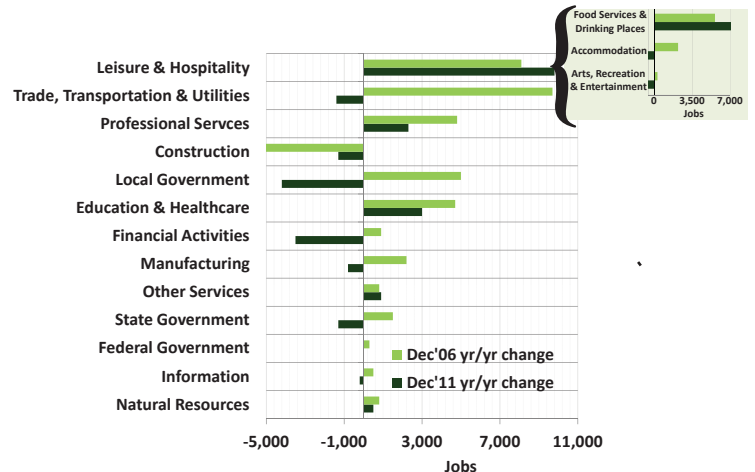
# Statewide Employment by Sector

	Leisure & Hospitality				Trade, Transportation & Utilities				Professional Services				Education & Healthcare			
	Yr/Yr Change		Share of Total		Yr/Yr Change		Share of Total		Yr/Yr Change		Share of Total		Yr/Yr Change		Share of Total	
	(thou.)	%	%	Rank	(thou.)	%	%	Rank	(thou.)	%	%	Rank	(thou.)	%	%	Rank
December 2010	3.3	1.1	27.6	1	(4.7)	(2.2)	18.9	2	2.7	2.0	12.4	3	2.5	2.5	9.1	4
January 2011	4.3	1.4	27.9	1	(3.5)	(1.7)	18.7	2	2.3	1.7	12.5	3	3.5	3.6	9.3	4
February 2011	3.9	1.3	27.9	1	(3.0)	(1.5)	18.4	2	2.7	2.0	12.3	3	3.3	3.3	9.3	4
March 2011	7.3	2.4	28.1	1	(1.9)	(0.9)	18.4	2	5.5	4.1	12.5	3	5.2	5.2	9.4	4
April 2011	7.3	2.4	28.4	1	(2.2)	(1.1)	18.3	2	4.4	3.3	12.5	3	5.2	5.2	9.4	4
May 2011	7.8	2.5	28.5	1	(3.9)	(1.9)	18.2	2	3.7	2.7	12.4	3	5.1	5.1	9.4	4
June 2011	8.6	2.7	28.8	1	(5.9)	(2.8)	18.1	2	5.2	3.8	12.6	3	4.4	4.4	9.3	4
July 2011	8.7	2.8	28.9	1	(5.8)	(2.8)	18.3	2	4.1	3.0	12.5	3	4.7	4.7	9.4	4
August 2011	10.6	3.4	28.9	1	(5.6)	(2.7)	18.3	2	3.1	2.3	12.6	3	3.9	3.9	9.3	4
September 2011	11.1	3.6	28.5	1	(4.2)	(2.0)	18.2	2	7.9	5.9	12.7	3	5.2	5.2	9.3	4
October 2011	14.6	4.7	28.7	1	(2.5)	(1.2)	18.3	2	6.9	5.1	12.7	3	5.7	5.7	9.4	4
November 2011	15.6	5.1	28.5	1	0.5	0.2	18.7	2	5.3	3.9	12.6	3	5.0	4.9	9.4	4
December 2011	9.8	3.2	28.4	1	(1.4)	(0.7)	18.8	2	2.3	1.7	12.6	3	3.0	2.9	9.3	4

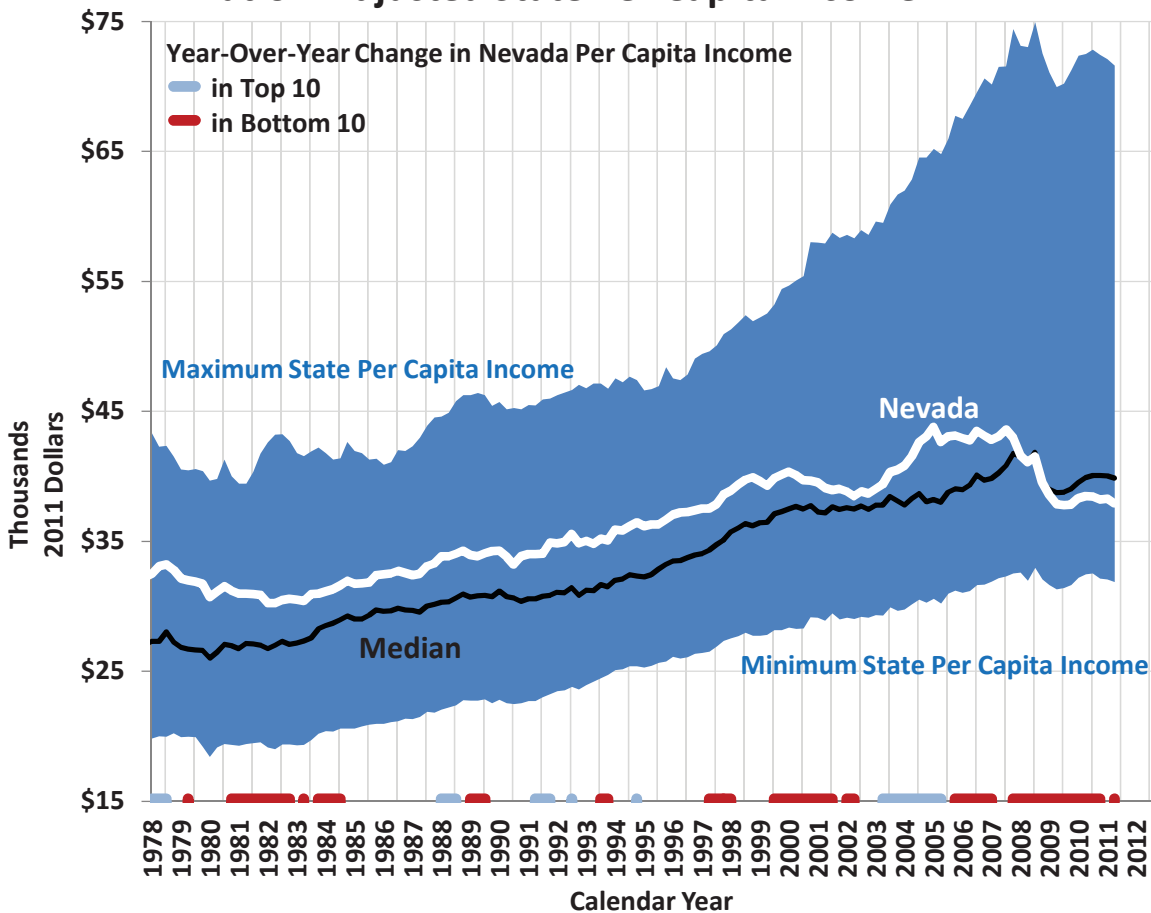
	Local Government				Construction				Financial Services				Manufacturing			
	Yr/Yr Change		Share of Total		Yr/Yr Change		Share of Total		Yr/Yr Change		Share of Total		Yr/Yr Change		Share of Total	
	(thou.)	%	%	Rank	(thou.)	%	%	Rank	(thou.)	%	%	Rank	(thou.)	%	%	Rank
December 2010	(2.5)	(2.4)	8.9	5	(11.1)	(16.6)	5.0	6	(2.4)	(4.5)	4.6	7	(2.3)	(5.9)	3.2	9
January 2011	(2.1)	(2.1)	9.1	5	(6.5)	(11.0)	4.8	6	(2.2)	(4.2)	4.6	7	(1.9)	(5.0)	3.3	8
February 2011	(2.2)	(2.1)	9.1	5	(3.7)	(6.4)	4.9	6	(1.7)	(3.2)	4.6	7	(1.9)	(5.0)	3.2	9
March 2011	(2.6)	(2.5)	9.0	5	(2.8)	(4.9)	4.9	6	(2.6)	(5.0)	4.5	7	(2.0)	(5.3)	3.2	9
April 2011	(1.4)	(1.4)	8.9	5	(7.1)	(11.9)	4.7	6	(3.5)	(6.6)	4.4	7	(2.2)	(5.8)	3.2	9
May 2011	(0.5)	(0.5)	8.9	5	(5.8)	(9.6)	4.9	6	(4.2)	(8.0)	4.3	7	(2.1)	(5.5)	3.2	9
June 2011	(3.2)	(3.2)	8.6	5	(5.1)	(8.4)	5.0	6	(4.0)	(7.7)	4.3	7	(2.1)	(5.5)	3.2	8
July 2011	(3.1)	(3.3)	8.2	5	(4.0)	(6.6)	5.1	6	(4.3)	(8.2)	4.3	7	(2.0)	(5.2)	3.2	8
August 2011	(2.4)	(2.6)	8.2	5	(2.8)	(4.6)	5.2	6	(4.6)	(8.8)	4.3	7	(2.0)	(5.3)	3.2	8
September 2011	(3.6)	(3.6)	8.5	5	0.2	0.3	5.3	6	(4.8)	(9.3)	4.2	7	(1.9)	(5.0)	3.2	8
October 2011	(3.9)	(3.9)	8.5	5	(2.7)	(4.5)	5.0	6	(4.4)	(8.5)	4.2	7	(1.6)	(4.3)	3.2	9
November 2011	(4.0)	(4.0)	8.5	5	0.0	0.0	5.1	6	(4.4)	(8.6)	4.1	7	(1.3)	(3.5)	3.2	9
December 2011	(4.2)	(4.2)	8.5	5	(1.3)	(2.3)	4.9	6	(3.5)	(6.8)	4.2	7	(0.8)	(2.2)	3.2	9

	Other Services				State Government				Federal Government				Information			
	Yr/Yr Change		Share of Total		Yr/Yr Change		Share of Total		Yr/Yr Change		Share of Total		Yr/Yr Change		Share of Total	
	(thou.)	%	%	Rank	(thou.)	%	%	Rank	(thou.)	%	%	Rank	(thou.)	%	%	Rank
December 2010	0.6	1.8	3.0	10	(0.1)	(0.3)	3.4	8	(0.3)	(1.7)	1.5	11	(0.2)	(1.6)	1.1	12
January 2011	0.8	2.5	3.0	10	(0.1)	(0.3)	3.1	9	(0.4)	(2.3)	1.5	11	0.3	2.4	1.1	12
February 2011	0.9	2.8	3.0	10	(0.4)	(1.1)	3.4	8	(0.2)	(1.2)	1.5	11	0.0	0.0	1.1	12
March 2011	0.8	2.4	3.0	10	(0.5)	(1.3)	3.4	8	(0.6)	(3.4)	1.5	11	0.0	0.0	1.1	12
April 2011	0.4	1.2	3.1	10	(0.8)	(2.1)	3.4	8	(1.1)	(5.9)	1.6	11	(0.1)	(0.8)	1.1	12
May 2011	0.4	1.2	3.1	10	(0.5)	(1.3)	3.4	8	(5.6)	(24.2)	1.6	11	0.0	0.0	1.1	12
June 2011	0.7	2.0	3.1	9	(0.4)	(1.2)	3.1	10	(2.7)	(13.2)	1.6	11	0.2	1.6	1.1	13
July 2011	0.4	1.2	3.2	9	(1.1)	(3.2)	3.0	10	(2.4)	(11.9)	1.6	11	(0.1)	(0.8)	1.1	13
August 2011	0.6	1.7	3.2	9	(1.4)	(4.1)	3.0	10	(0.6)	(3.3)	1.6	11	0.1	0.8	1.1	13
September 2011	0.7	2.0	3.1	10	(1.6)	(4.3)	3.1	9	0.1	0.6	1.6	11	0.1	0.8	1.1	13
October 2011	0.5	1.5	3.1	10	(1.3)	(3.4)	3.2	8	0.1	0.6	1.5	11	0.1	0.8	1.1	13
November 2011	0.6	1.8	3.1	10	(1.5)	(3.9)	3.2	8	0.0	0.0	1.5	11	(0.1)	(0.8)	1.1	13
December 2011	0.9	2.7	3.1	10	(1.3)	(3.4)	3.3	8	0.0	0.0	1.5	11	(0.2)	(1.6)	1.1	13

	Natural Resources				All Non-Farm Jobs			
	Yr/Yr Change		Share of Total		Total	Yr/Yr Change		
	(thou.)	%	%	Rank	(thou.)	(thou.)	%	
December 2010	0.8	6.9	1.1	13	1,120.4	(13.7)	(1.2)	
January 2011	0.7	6.1	1.1	13	1,099.2	(4.8)	(0.4)	
February 2011	0.7	6.1	1.1	13	1,103.9	(1.6)	(0.1)	
March 2011	0.5	4.3	1.1	13	1,114.9	6.3	0.6	
April 2011	0.7	6.0	1.1	13	1,119.1	(0.4)	(0.0)	
May 2011	0.5	4.2	1.1	13	1,122.4	(5.1)	(0.5)	
June 2011	0.4	3.2	1.1	12	1,119.4	(3.9)	(0.3)	
July 2011	0.1	0.8	1.2	12	1,110.8	(4.8)	(0.4)	
August 2011	0.1	0.8	1.2	12	1,112.0	(1.0)	(0.1)	
September 2011	0.3	2.4	1.1	12	1,124.5	9.5	0.9	
October 2011	0.3	2.4	1.1	12	1,129.8	11.8	1.1	
November 2011	0.4	3.2	1.1	12	1,132.7	16.1	1.4	
December 2011	0.5	4.0	1.1	12	1,124.2	3.8	0.3	



### Inflation-Adjusted State Per Capita Income



### Inflation-Adjusted State Per Capita Income

